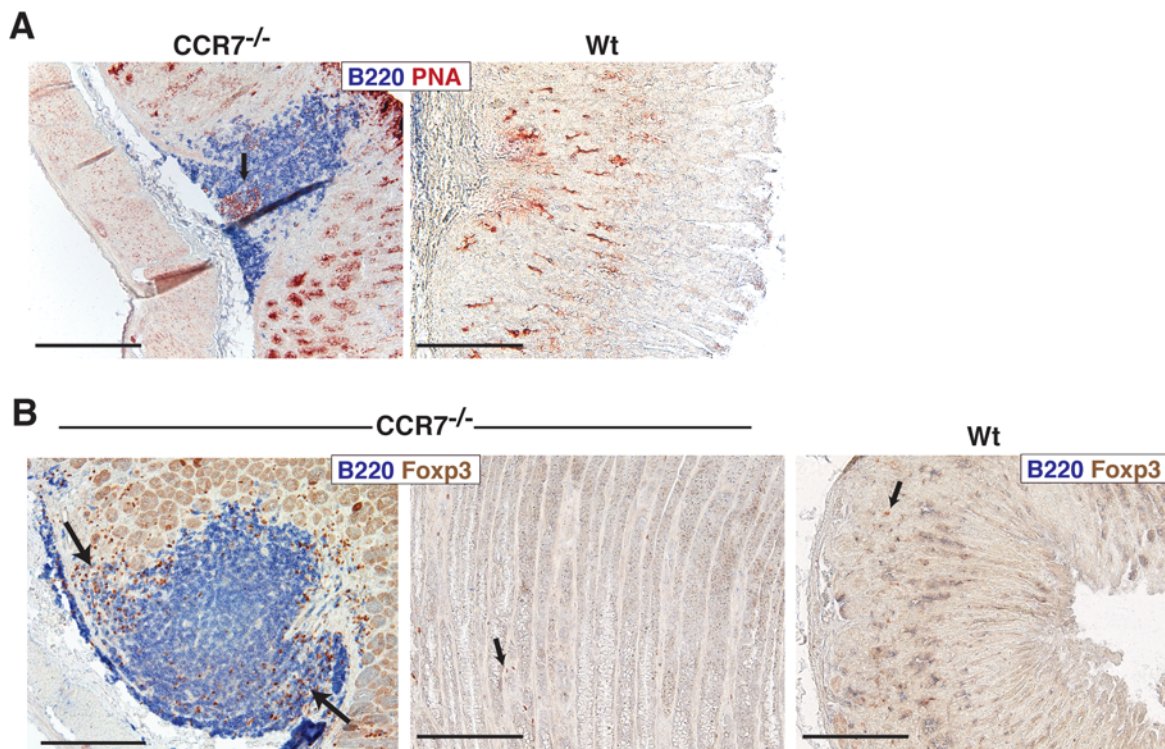


## Supplemental Figure 1



**Supplemental Figure 1. GC formation and Foxp3<sup>+</sup> Treg cells in gastric TLOs of CCR7<sup>-/-</sup> mice.** Stomach sections were stained for (A) GC with PNA (in red) and (B) for Foxp3<sup>+</sup> Treg cells (in brown) and B220<sup>+</sup> B cells (in blue). Representative photos are shown. The arrows show the GC or Foxp3<sup>+</sup> Treg cells. Scale bar, 200  $\mu$ m.