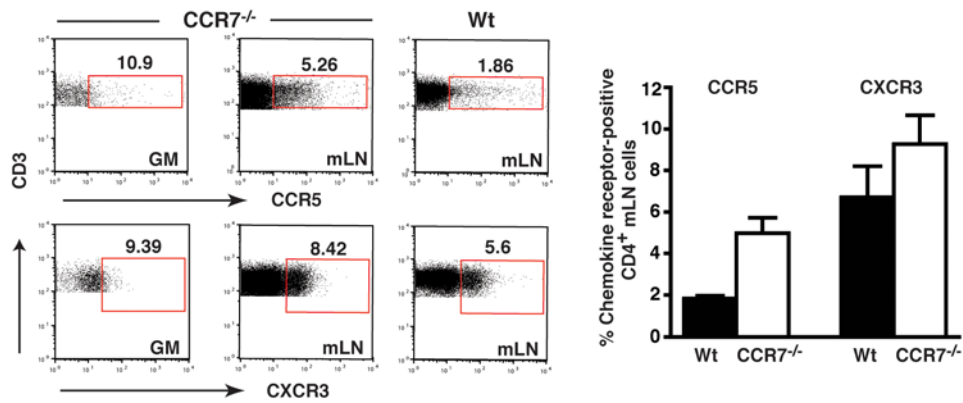


Supplemental Figure 2



Supplemental Figure 2. Enhanced expression of the Th1-associated chemokine receptors CCR5 and/or CXCR3 on GM- and mLN-derived T lymphocytes of CCR7^{-/-} mice. CD3⁺ CD4⁺-gated T cells from gastric mucosa of CCR7^{-/-} or from mLN of Wt and CCR7^{-/-} mice (n=3 per group) were analysed for expression of CCR5 and CXCR3 (left panel). Percentages of CCR5⁺ or CXCR3⁺ CD4⁺ T-cells are indicated and differences between age-matched Wt and CCR7^{-/-} mLNs are shown (right panel). Bars represent means ± SEM.