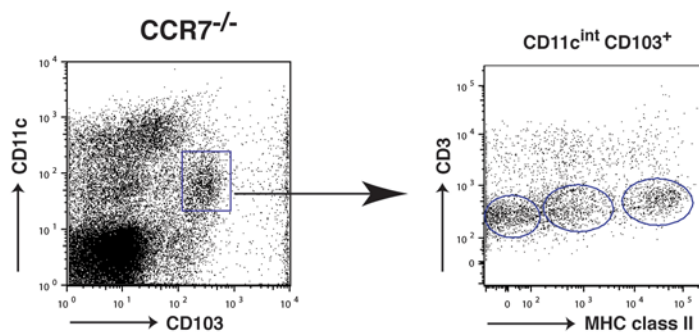


Supplemental Figure 3



Supplemental Figure 3. The CD11c^{int}CD103⁺ DC-like cell subpopulation in the GM of CCR7^{-/-} mice was largely CD3⁻ and expressed variable levels of MHC class II. GM-derived leukocytes were stained for CD11c, CD103, CD3, and MHC class II expression. Cells were gated for CD11c^{int} CD103⁺ (left panel) and further analysed for CD3 and MHC class II expression (right panel). One representative dot plot is shown (n=4).