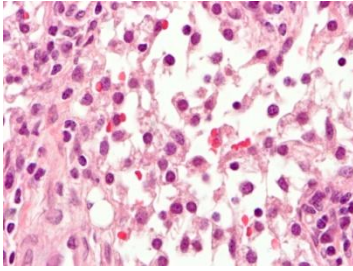


CD4T-1

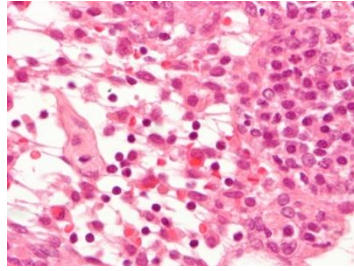
CD4T-2

CD4T-3

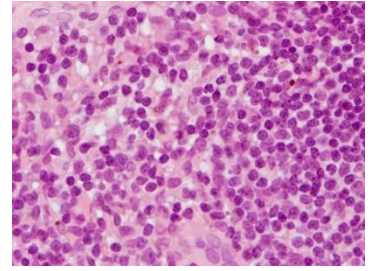
Lymph node



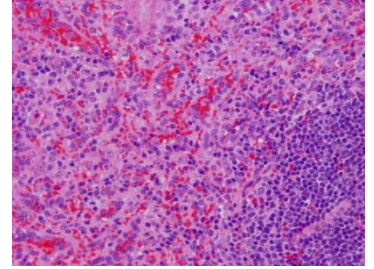
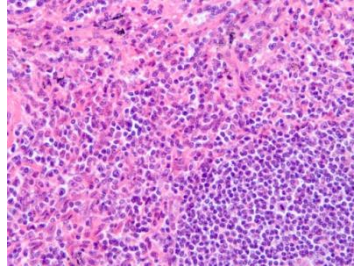
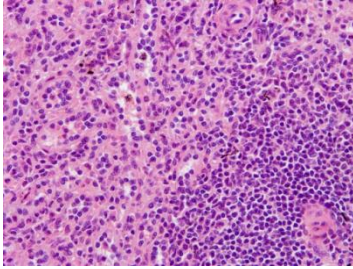
\pm : Hemorrhage in sinus



\pm : Hemorrhage in sinus

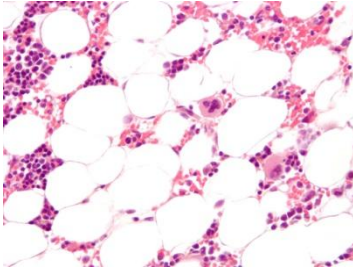


Spleen

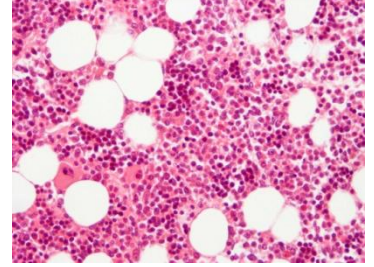
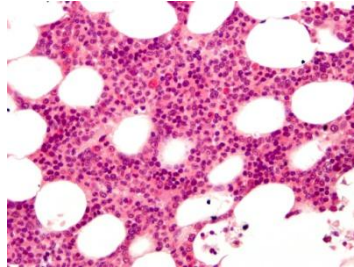


+: Congestion

Bone Marrow

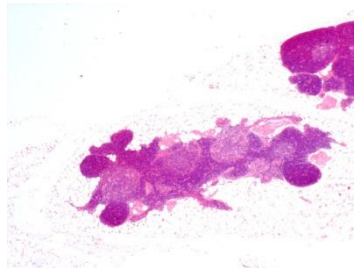


++: Decrease of hematopoiesis

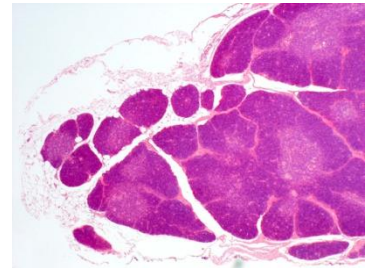


Thymus

N/A



+: Involution



Small Intestine

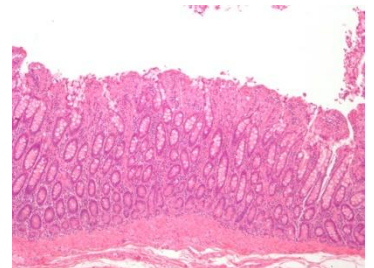
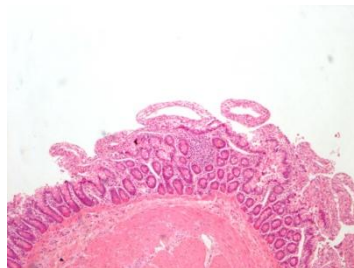
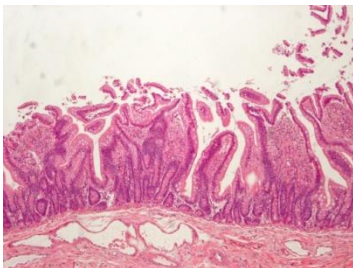


Figure S2 Photographs of histopathological analysis.

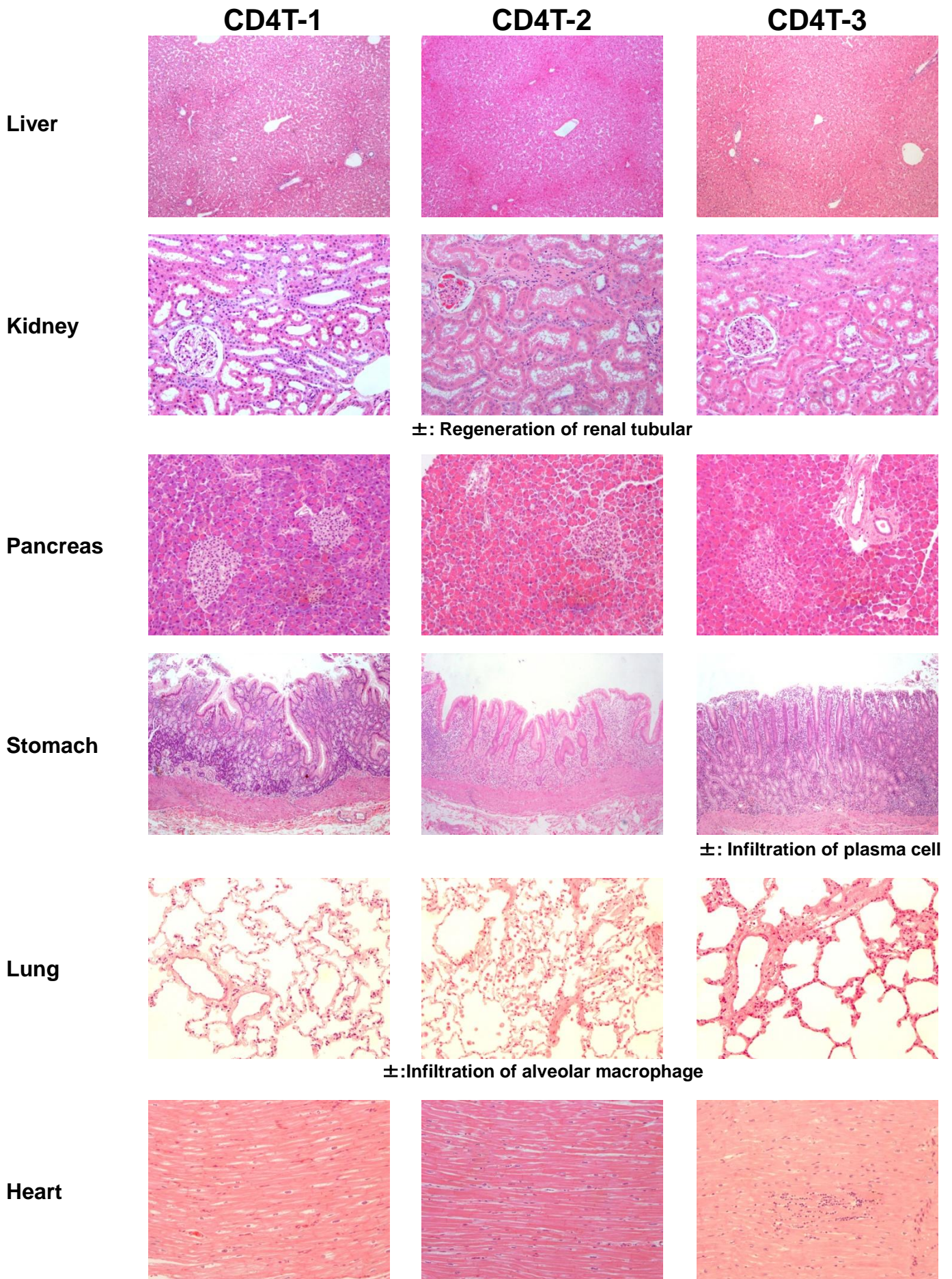


Figure S2 Photographs of histopathological analysis.