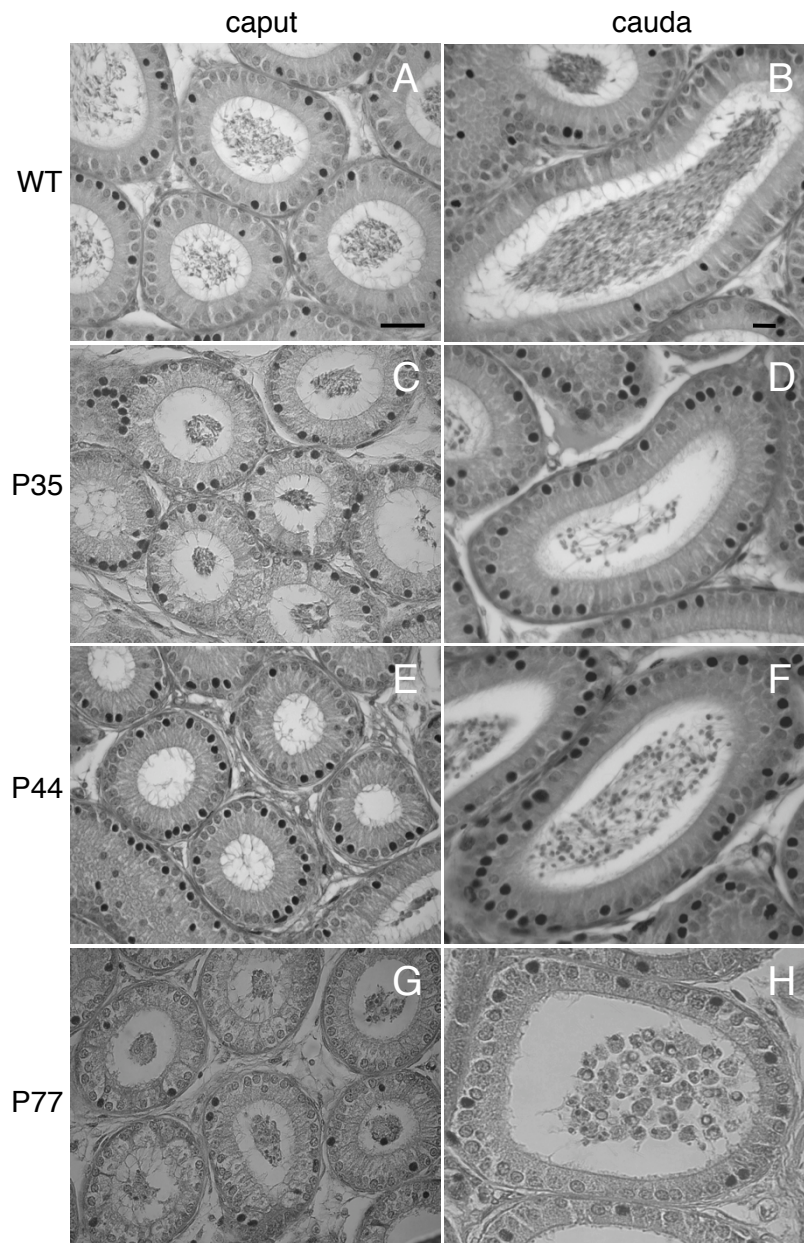


Supplemental figure 1

Fig. S1. Histological analysis of 35 (P35) , 44 (P44), and 77 (P77) days-old testis. Representative cross-sections of seminiferous tubuli (left column, wild type; middle and right columns, wr) are shown. In the left and middle columns, single cross-sections are illustrated for a direct comparison between wr and wild type testis. Black arrowheads and arrows point to round spermatids and elongated spermatids/spermatozoa, respectively. Low magnifications of the right column provide an overview of the wr testes. Scale bars, 20 mm (A, B, D, E, G, H); 85 μ m (C, F, I).



Supplemental figure 2

Fig. S2. Histological comparison between wild-type (A, B) and wr epididymes at 35 (C, D), 44 (E, F) and 77 (G, H) days of age. Lower magnifications provide a general view of sectioned epididymes. Higher magnifications allow identifying better the morphology of luminal sperm cells. Scale bars, 33 μm (A, C, E, G), 13 μm (B, D, F, H).