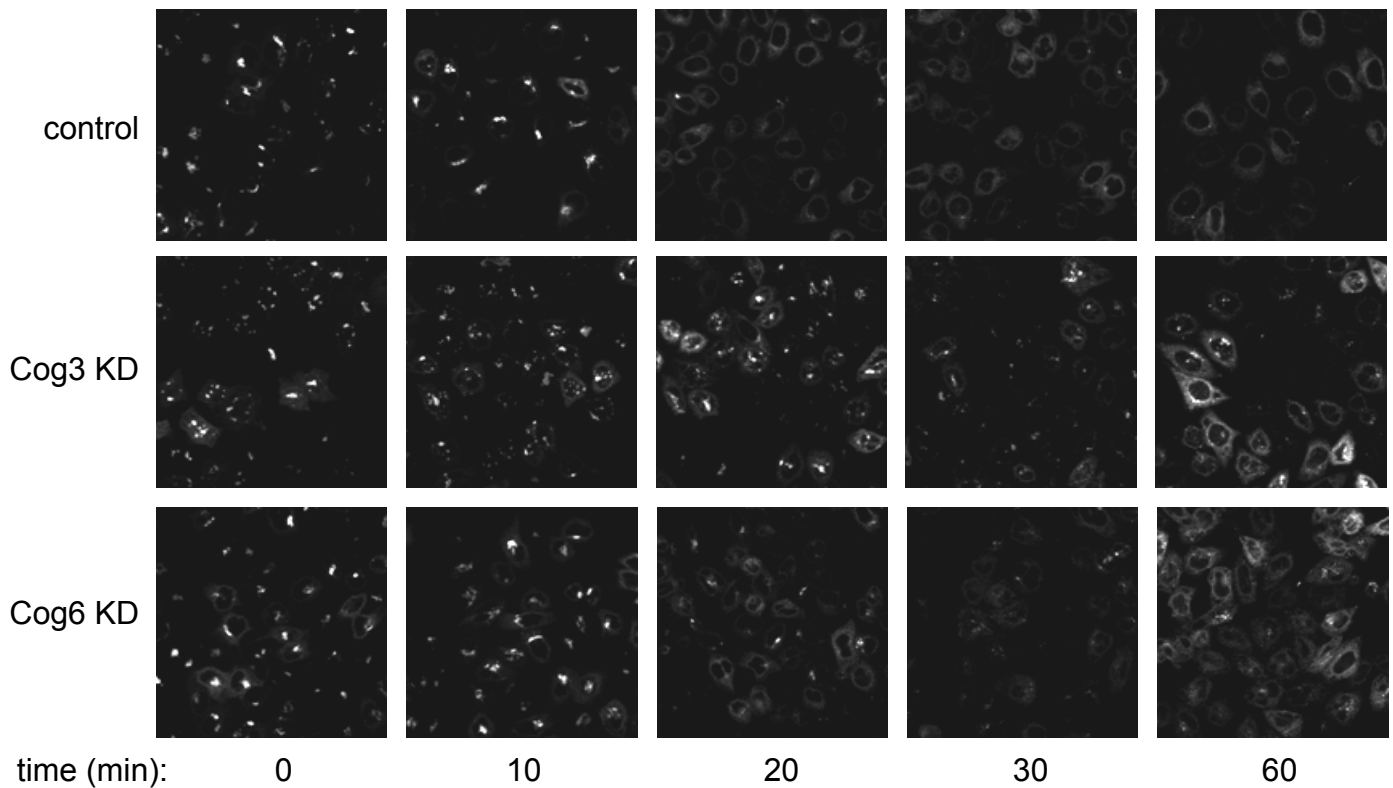


Supplemental Figure 2



Supplemental Figure 2 - Cog3 and Cog6 KD cells display a delayed response to BFA.

HeLa cells stably expressing GFP-GalNAcT2 were transfected with siRNA constructs against Cog3 and Cog6 following by treatment with 0.25 $\mu\text{g/mL}$ BFA at 72 h post-transfection. The extent of Golgi collapse (transport of GFP-GalNAcT2 to the ER) was monitored using confocal microscopy. As shown, Golgi collapse into the ER was complete in control HeLa cells by 20 min at this concentration. In contrast, Golgi localization of GFP-GalNAcT2 persists at 30 and 60 min in the Cog KD cells.