

Supporting Information:

Figure Legends

Figure S1. HPLC-UV chromatogram illustrates the separation of the four synthetic stereoisomer adducts derived from the incubation of (\pm)-*anti*-DB[*a,l*]PDE with dA.

Figure S2. (A). MS/MS fragmentation of *anti*-DB[*a,l*]PDE-dA adduct at positive mode.

(B). MS/MS fragmentation of *anti*-DB[*a,l*]PDE-[¹⁵N₅]-dA standard adduct (the asterisks indicate the ¹⁵N-labeled sites).

Figure S3. CD spectra of (\pm)-*anti-cis*- and (\pm)-*anti-trans*-DB[*a,l*]PDE-dA adducts.

Figure S1.

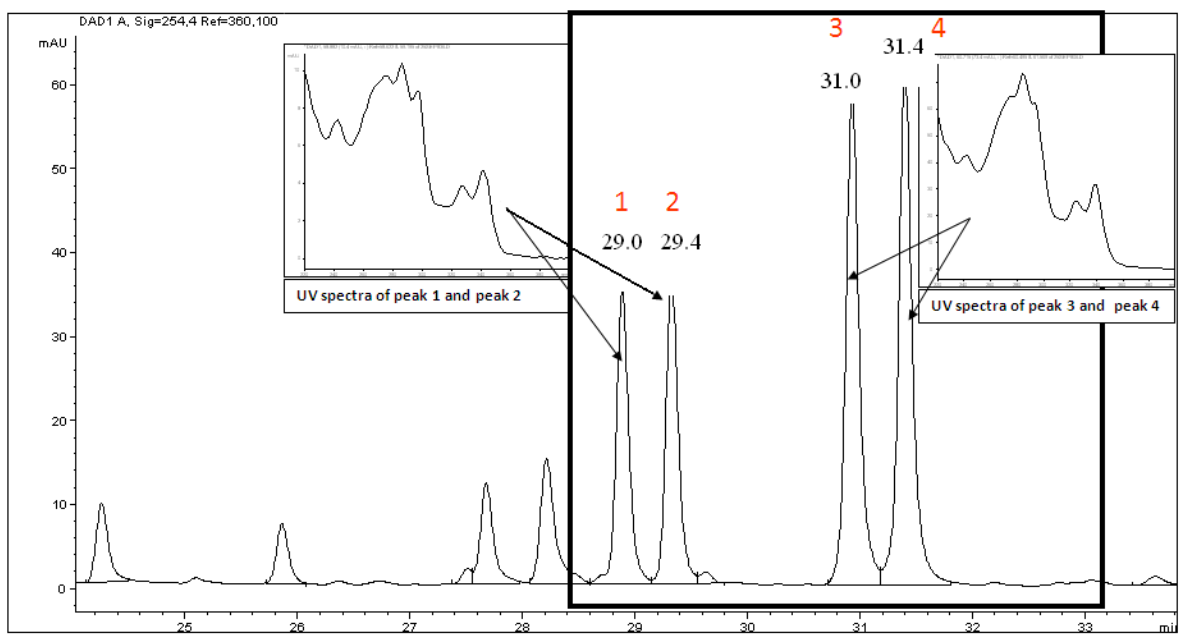


Figure S2

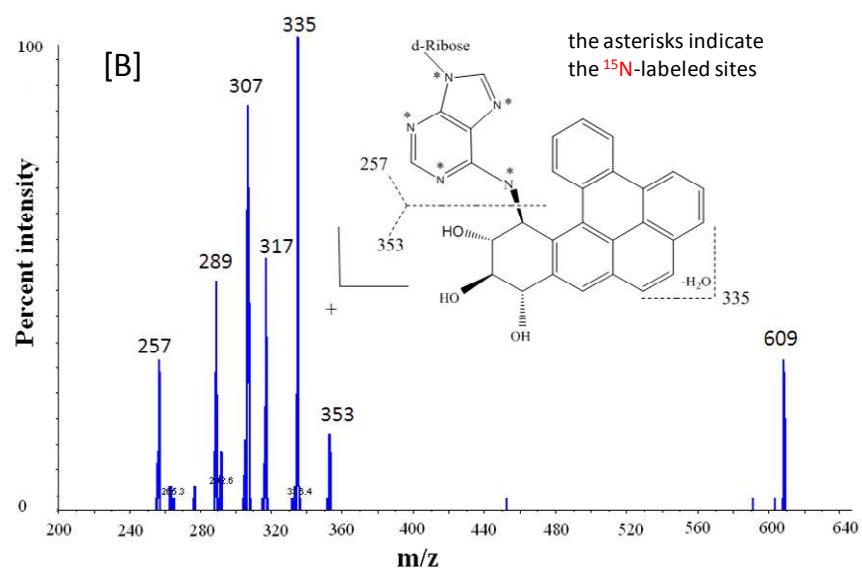
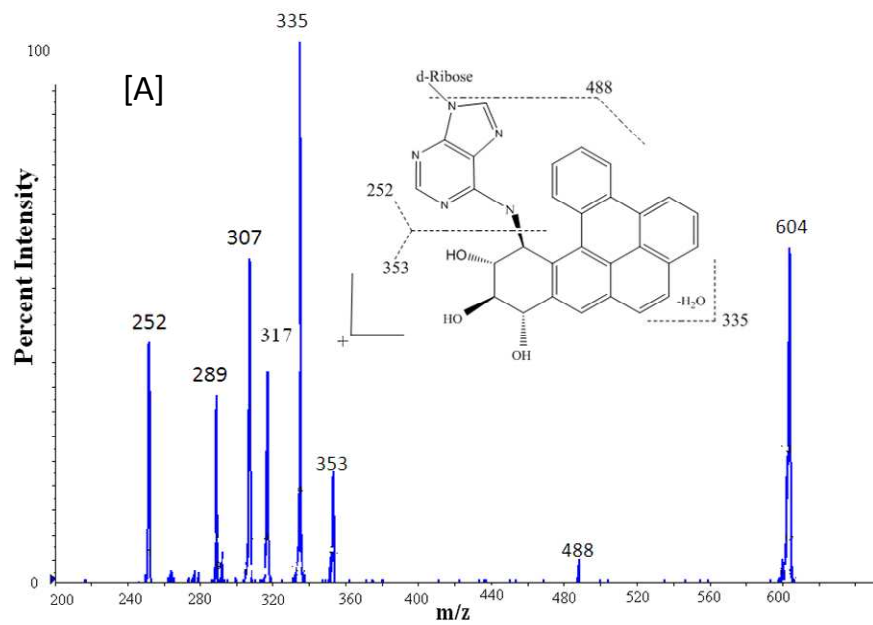


Figure S3

