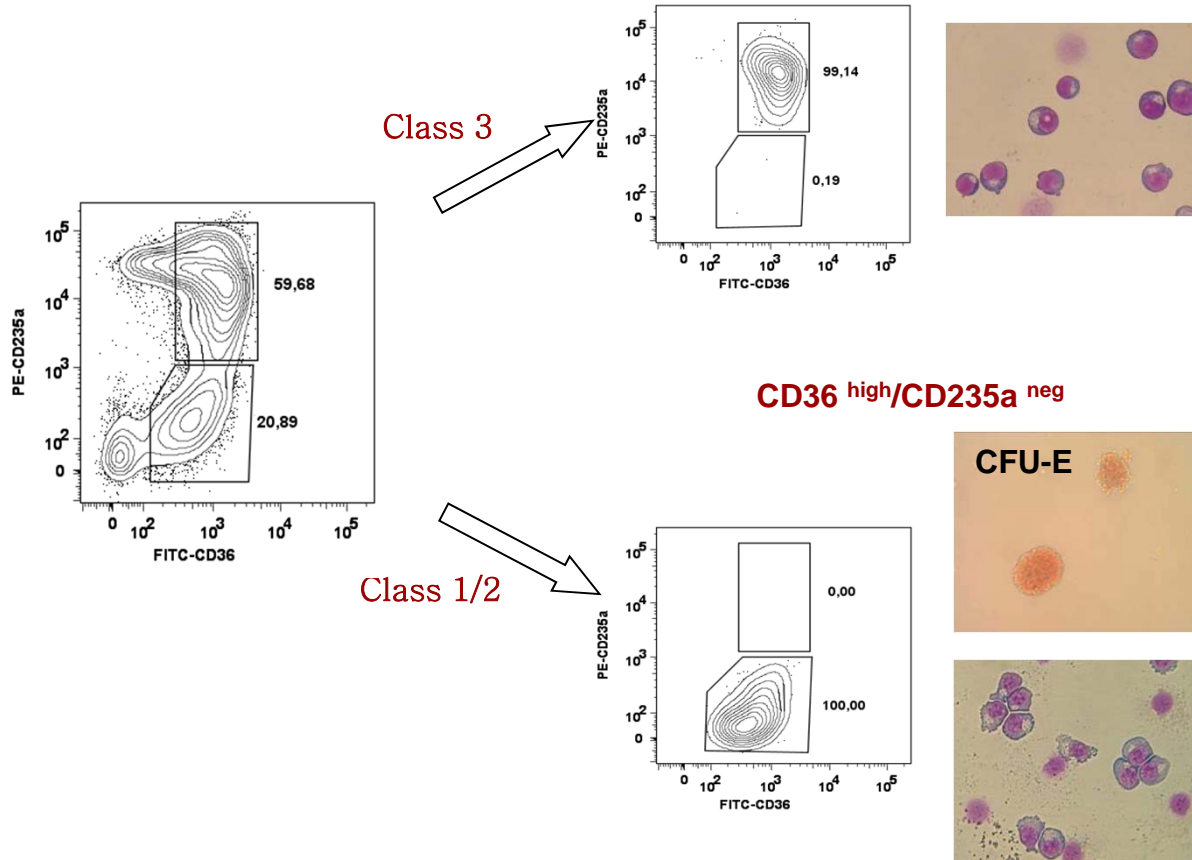


- 1: Class 1, CD36<sup>high</sup>CD235a<sup>neg</sup> (CFU-E and pro-erythroblasts)
- 2: Class 2, CD36<sup>high</sup>CD235a<sup>low</sup> (pro-erythroblasts)
- 3: Class 3, CD36<sup>high</sup>CD235a<sup>high</sup> (basophilic-polychromatic erythroblast)
- 4: Class 4, CD36<sup>low</sup>CD235a<sup>high</sup> (orthochromatic erythroblasts)

Supplemental Figure 3A

**CD36<sup>high</sup>/CD235a<sup>high</sup>**

**CFU-E → Not Detected**



Supplemental Figure 3B