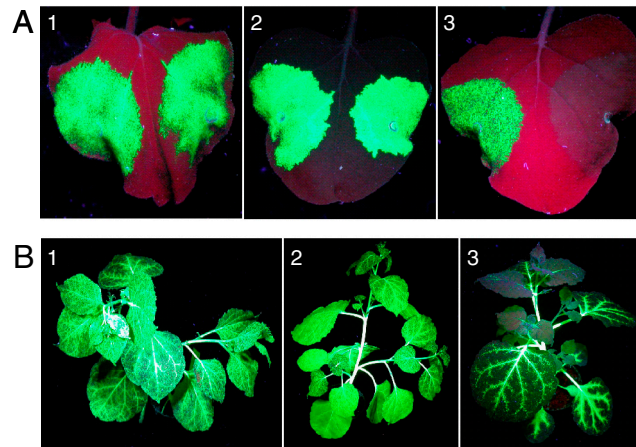


# Supporting Information

Werner et al. 10.1073/pnas.1102928108



**Fig. S1.** Screening of transgenic plants. (A) pICH20592 putative transformants were infiltrated with pICH18693 (alcR; right side of each leaf) or with both pICH18693 and pICH20592 (left) as a positive control. After ethanol induction, two positive transformants (1, 2) show GFP-expression in both infiltrated areas, whereas the negative plant (3) shows GFP-expression only in the control infiltration. (B) Progeny plants (F1) from a cross between pICH18693- and pICH20592-transformants. Plants were induced with ethanol by root drenching.

Table S1. GFP fluorescence from induced and infiltrated plants

Plant *	Fluorescence units <sup>†</sup> per mg FW	Yield [mg GFP/g FW] <sup>‡</sup>
WT-1	0.37	-
WT-2	0.47	-
Noninduced-1	0.36	-
Noninduced-2	0.44	-
Noninduced-3	0.46	-
Noninduced-4	0.50	-
Induced w/o MP-1	14.58	0.52
Induced w/o MP-2	18.25	0.67
Induced w/o MP-3	26.98	1.01
Induced w/o MP-4	27.43	1.02
Induced w/o MP-5	32.10	1.21
Induced w/o MP-6	38.95	1.47
Induced w/o MP-7	39.31	1.48
Induced w/o MP-8	58.86	2.27
Induced w/o MP-9	65.06	2.49
Induced w/o MP average ± SD		1.35 ± 0.63
Induced with MP-1	68.63	2.66
Induced with MP-2	79.00	3.06
Induced with MP-3	80.67	3.13
Induced with MP-4	84.04	3.26
Induced with MP-5	84.30	3.23
Induced with MP-6	87.13	3.38
Induced with MP-7	87.22	3.39
Induced with MP-8	87.59	3.39
Induced with MP-9	88.67	3.45
Induced with MP-10	89.70	3.46
Induced with MP-11	90.41	3.51
Induced with MP-12	91.36	3.50
Induced with MP-13	92.28	3.58
Induced with MP-14	92.63	3.59
Induced with MP-15	93.68	3.64
Induced with MP-16	93.88	3.60
Induced with MP-17	93.92	3.65
Induced with MP-18	94.78	3.64
Induced with MP-19	98.34	3.78
Induced with MP-20	101.07	3.87
Induced with MP-21	102.77	3.98
Induced with MP-22	109.92	4.26
Induced with MP average ± SD		3.50 ± 0.33
Infiltration 18711 on WT-plant -1	85.81	3.33
Infiltration 18711 on WT-plant -2	86.84	3.37
Infiltration 18711 on WT-plant -3	91.74	3.57
Infiltration 18711 on WT-plant -4	100.42	3.90
Infiltration 18711 on WT-plant -5	101.36	3.94
Infiltration 18711 on WT-plant -6	103.07	4.00
Infiltration 18711 on WT-plant -7	103.49	4.03
Infiltration 18711 on WT-plant -8	105.75	4.11
Infiltration pICH18711 on WT-plant average ± SD		3.78 ± 0.29
Induced with MP leaves	86.99	3.37
Induced with MP stem	90.51	3.50
Infiltration 18711 on WT-plant leaves	142.54	5.57
Infiltration 18711 on WT-plant stem	0.35	-

Plant extracts were diluted from 1:20 to 1:100 in order to be within the linear measuring range of the instrument. Values are the average of two independent measurements

\*Plants are ordered from low to high fluorescence within each subgroup

<sup>‡</sup>Values <2 are below the detection limit

<sup>†</sup>1 fluorescence unit corresponds to 39.01 µg GFP/g FW