

Supplemental Figure S2

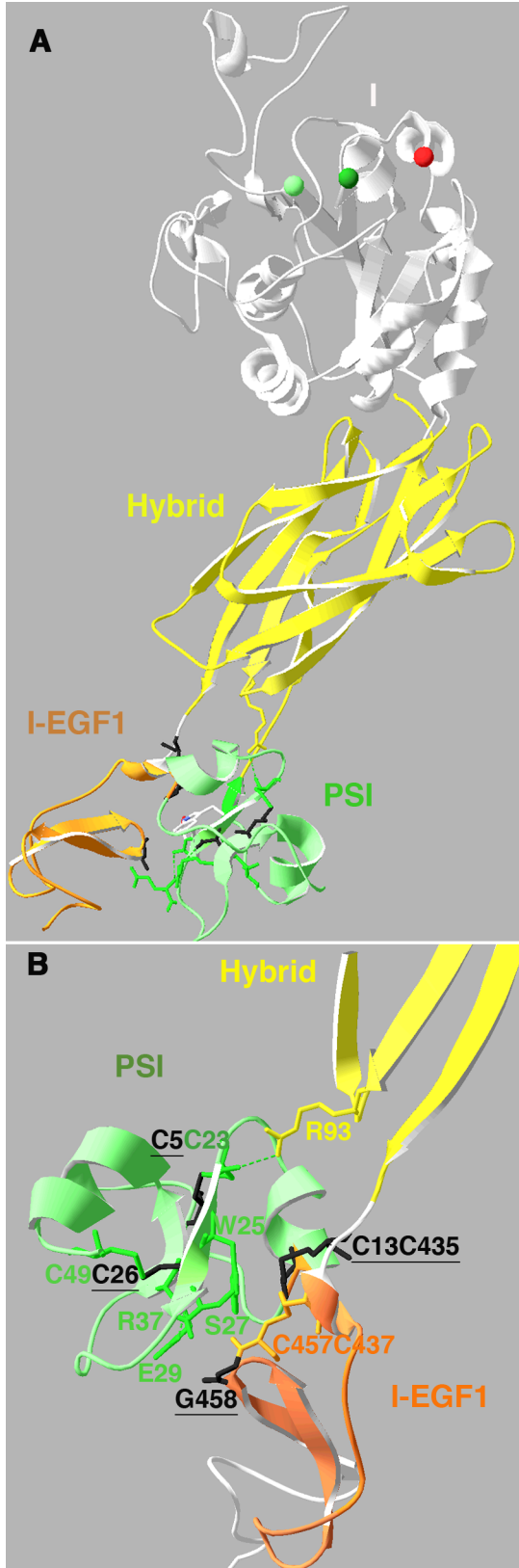


Fig. S2. PSI domain mutations are located in regions near the Hybrid and I-EGF1 domains. *A.* Ribbon structure [from (28)] illustrating the location of the PSI domain (green) relative to the I-EGF1 (orange), Hybrid (yellow) and I (white) domains. SyMBS Ca²⁺ (light green), MIDAS Mg²⁺ (green), and ADMIDAS Ca²⁺ (red) cations are shown in the I domain. Side chains of residues labeled in *B* are also shown. *B.* Enlarged and rotated (approximately 180°) structure showing amino acids corresponding to the *Drosophila* βPS residues that have been mutated and analyzed for binding (black underlined) and amino acids interacting with them that may influence ligand binding.