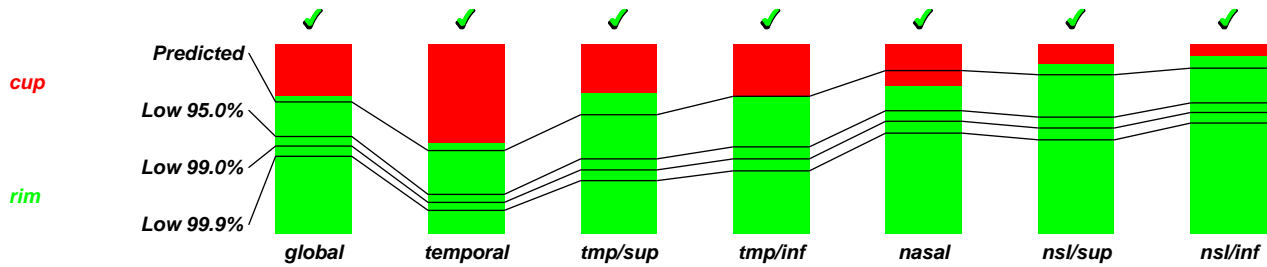
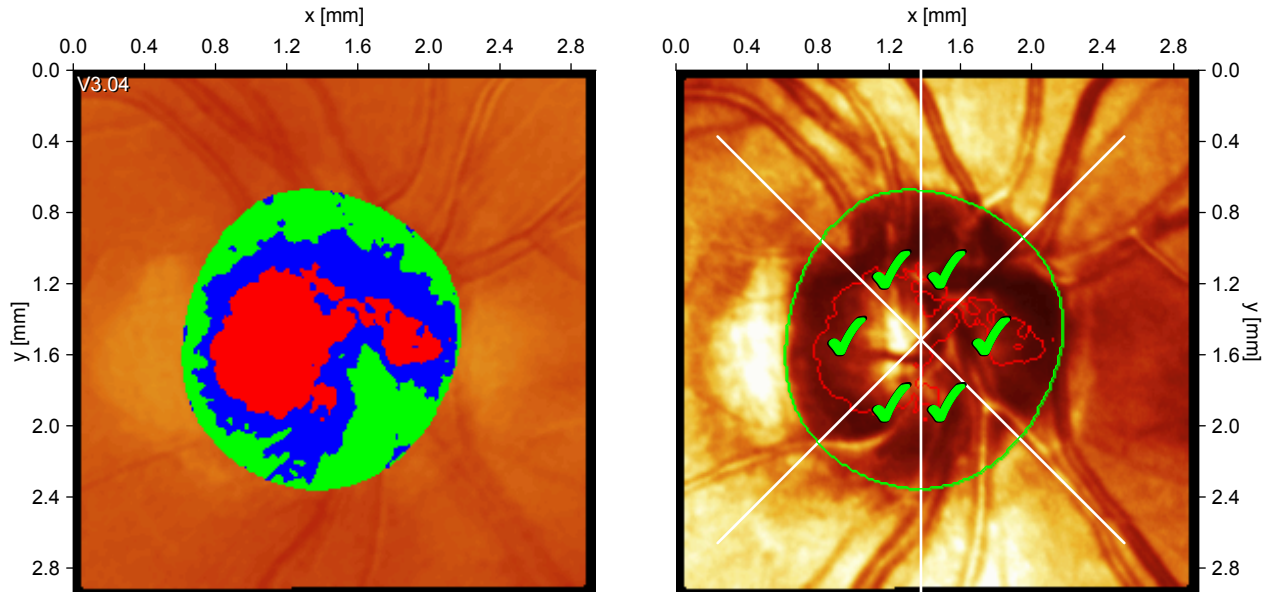


Patient: DIS  
Sex: male DOB: Pat-ID: DIS  
Examination: Date: Jun/15/2004 (excluded)  
Scan: Focus: 2.00 dpt Depth: 2.50 mm Operator: cb

OD



Moorfields regression classification: **within normal limits (\*)**

Rim area	global	temporal	tmp/sup	tmp/inf	nasal	nsl/sup	nsl/inf
<b>actual [mm2]</b>	1.501	0.235	0.207	0.198	0.392	0.231	0.238
<b>predicted [mm2]</b>	1.435	0.215	0.176	0.199	0.435	0.217	0.222
<b>low 95.0% CI lim. [mm2]</b>	1.060	0.102	0.111	0.126	0.328	0.159	0.175
<b>low 99.0% CI lim. [mm2]</b>	0.956	0.081	0.094	0.109	0.299	0.144	0.163
<b>low 99.9% CI lim. [mm2]</b>	0.844	0.061	0.078	0.091	0.268	0.128	0.149
<b>actual/disk area [%]</b>	0.0	0.0	0.0	0.0	0.0	0.0	0.0
<b>predicted [%]</b>	69.5	43.8	62.8	72.4	86.0	83.8	87.2
<b>low 95.0% CI lim. [%]</b>	51.3	20.8	39.4	45.9	64.8	61.5	68.9
<b>low 99.0% CI lim. [%]</b>	46.3	16.6	33.7	39.5	59.2	55.7	63.9
<b>low 99.9% CI lim. [%]</b>	40.8	12.4	28.0	33.2	53.1	49.5	58.3

(\*) Moorfields regression classification (Ophthalmology 1998;105:1557-1563). Classification based on statistics. Diagnosis is physician's responsibility.

Date: Aug/25/2010 Signature: