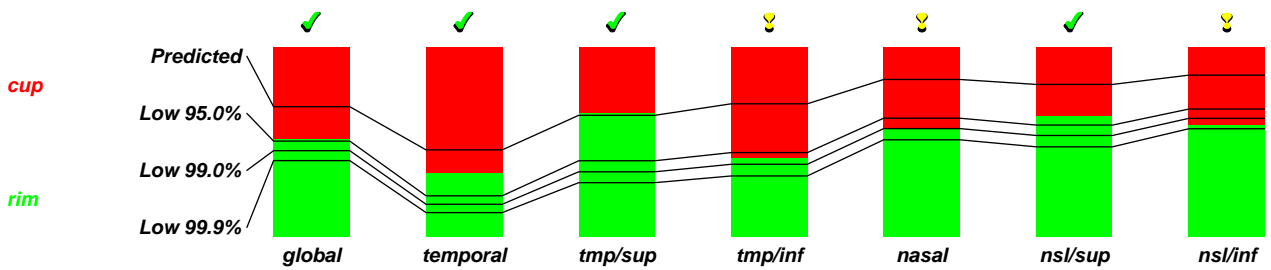
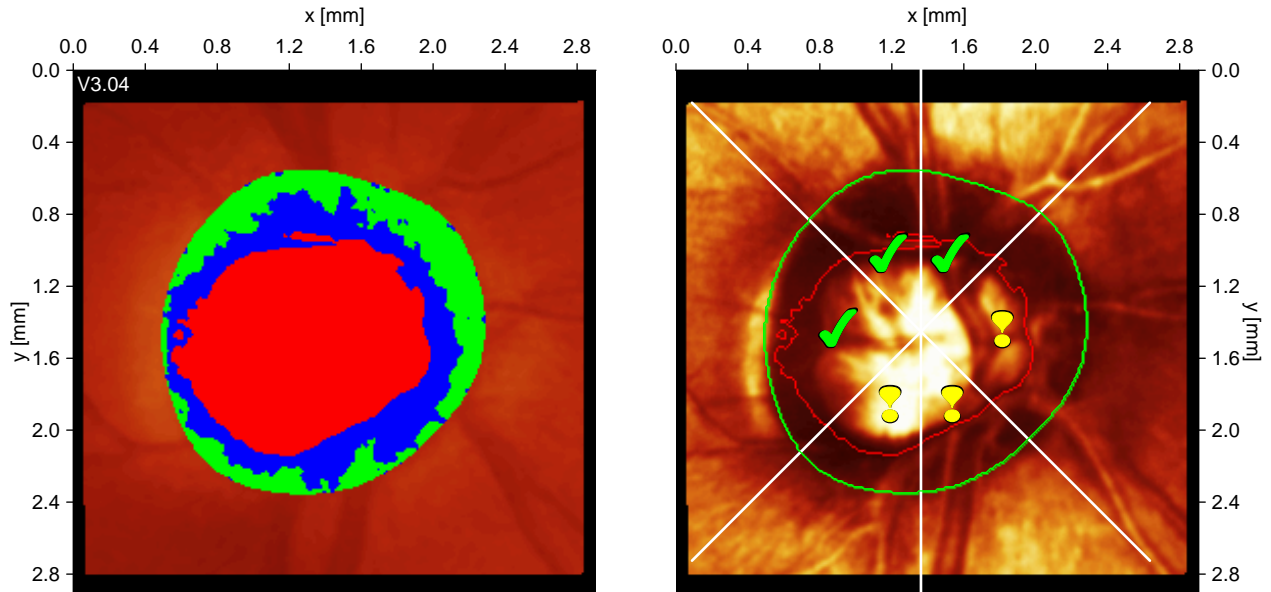


Patient: DIS  
Sex: female DOB: Pat-ID:  
Examination: Date: Nov/4/2004 (excluded)  
Scan: Focus: 1.00 dpt Depth: 3.50 mm Operator: TS

OD



Moorfields regression classification: **borderline (\*)**

Rim area	global	temporal	tmp/sup	tmp/inf	nasal	nsl/sup	nsl/inf
<b>actual [mm2]</b>	1.309	0.212	0.212	0.142	0.378	0.196	0.169
<b>predicted [mm2]</b>	1.750	0.289	0.208	0.241	0.547	0.248	0.245
<b>low 95.0% CI lim. [mm2]</b>	1.287	0.136	0.130	0.152	0.412	0.182	0.193
<b>low 99.0% CI lim. [mm2]</b>	1.160	0.108	0.111	0.131	0.376	0.165	0.179
<b>low 99.9% CI lim. [mm2]</b>	1.025	0.080	0.093	0.110	0.337	0.146	0.164
<b>actual/disk area [%]</b>	0.0	0.0	0.0	0.0	0.0	0.0	0.0
<b>predicted [%]</b>	68.5	45.8	64.0	70.0	82.9	80.2	85.1
<b>low 95.0% CI lim. [%]</b>	50.4	21.6	40.1	44.4	62.4	58.8	67.3
<b>low 99.0% CI lim. [%]</b>	45.4	17.1	34.2	38.2	57.0	53.3	62.4
<b>low 99.9% CI lim. [%]</b>	40.1	12.8	28.5	32.1	51.1	47.4	56.9

(\*) Moorfields regression classification (Ophthalmology 1998;105:1557-1563). Classification based on statistics. Diagnosis is physician's responsibility.

Date: Aug/25/2010 Signature: