

Ocular Pharmacokinetics of Dorzolamide and Brinzolamide Following Single and Multiple Topical Dosing: Implications for Effects on Ocular Blood Flow

Rajendra S. Kadam, Gajanan Jadhav, Miller Ogidigben, and Uday B. Kompella.

Department of Pharmaceutical Sciences (R.S.K., G.J., and U.B.K.)

Departments of Ophthalmology and Bioengineering (U.B.K.)

University of Colorado Anschutz Medical Campus, Aurora, CO 80045

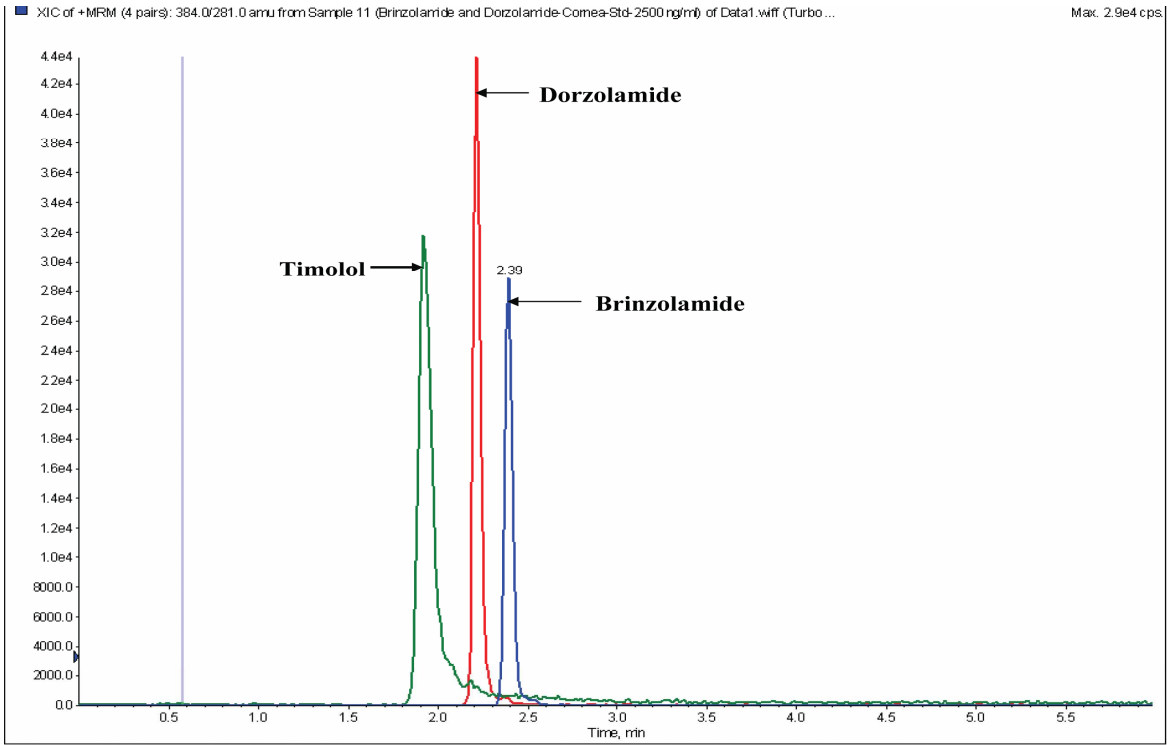
Merck & Co., Inc. (M.O.)

Drug Metabolism and Disposition

FIGURE LEGENDS

Supplemental Figure 1. Representative chromatogram of analytes in rabbit cornea.

Dorzolamide and brinzolamide were at 2500 ng/ml and timolol was at 500 ng/ml.



Supplemental Figure 1