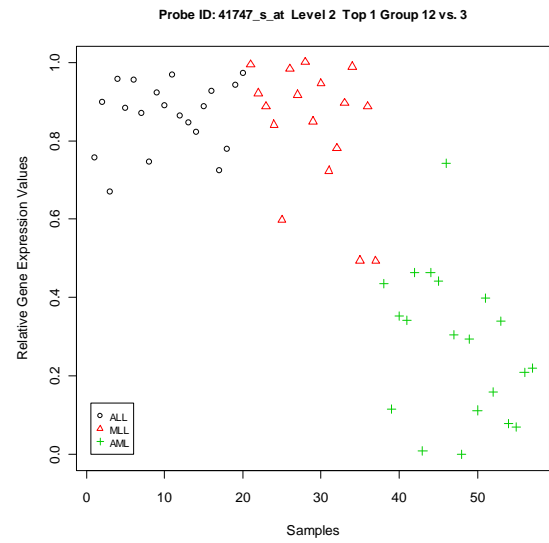


(a)



(b)

Figure S1. Scatter-plots of the top most gene of each level in the Leukemia data set. Panels (a) and (b) are the scatter-plots of the top most gene of level-1 and level-2. The top most genes are MME (1389_at) and MEF2A (41747_s_at), respectively. There are three classes in the Leukemia data set: acute lymphoblastic leukemia (ALL), mixed-lineage leukemia (MLL), and acute myelogenous leukemia (AML).