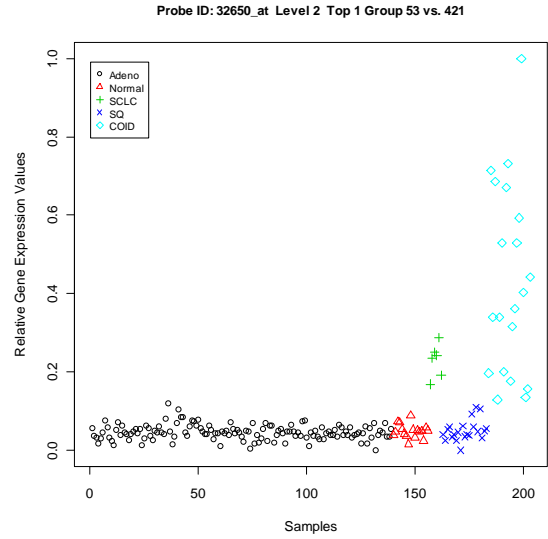
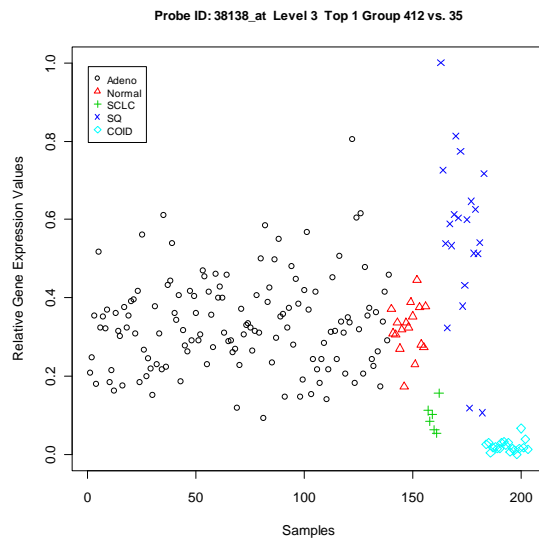


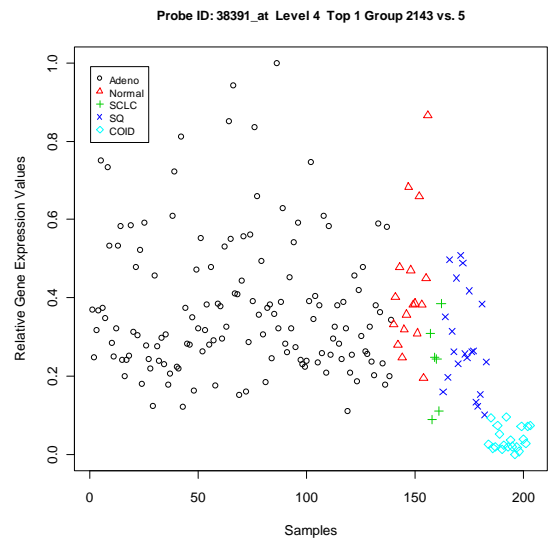
(a)



(b)



(c)



(d)

Figure S3. Scatter-plots of the top most gene of each level in the Lung Cancer data set. Panels (a), (b), (c) and (d) are the scatter-plots of the top most gene of level-1, level-2, level-3 and level-4, respectively. The top most genes are VAMP2 (32254_at), TAGLN3 (32650_at), S100A11 (38138_at) and CAPG (38391_at), respectively. There are five classes in the lung cancer data set: lung adenocarcinomas (Adeno), normal lung specimens (Normal), small-cell lung cancer (SCLC), squamous cell lung carcinomas (SQ), and pulmonary carcinoids (COID).