

ONLINE SUPPLEMENTAL FIGURES

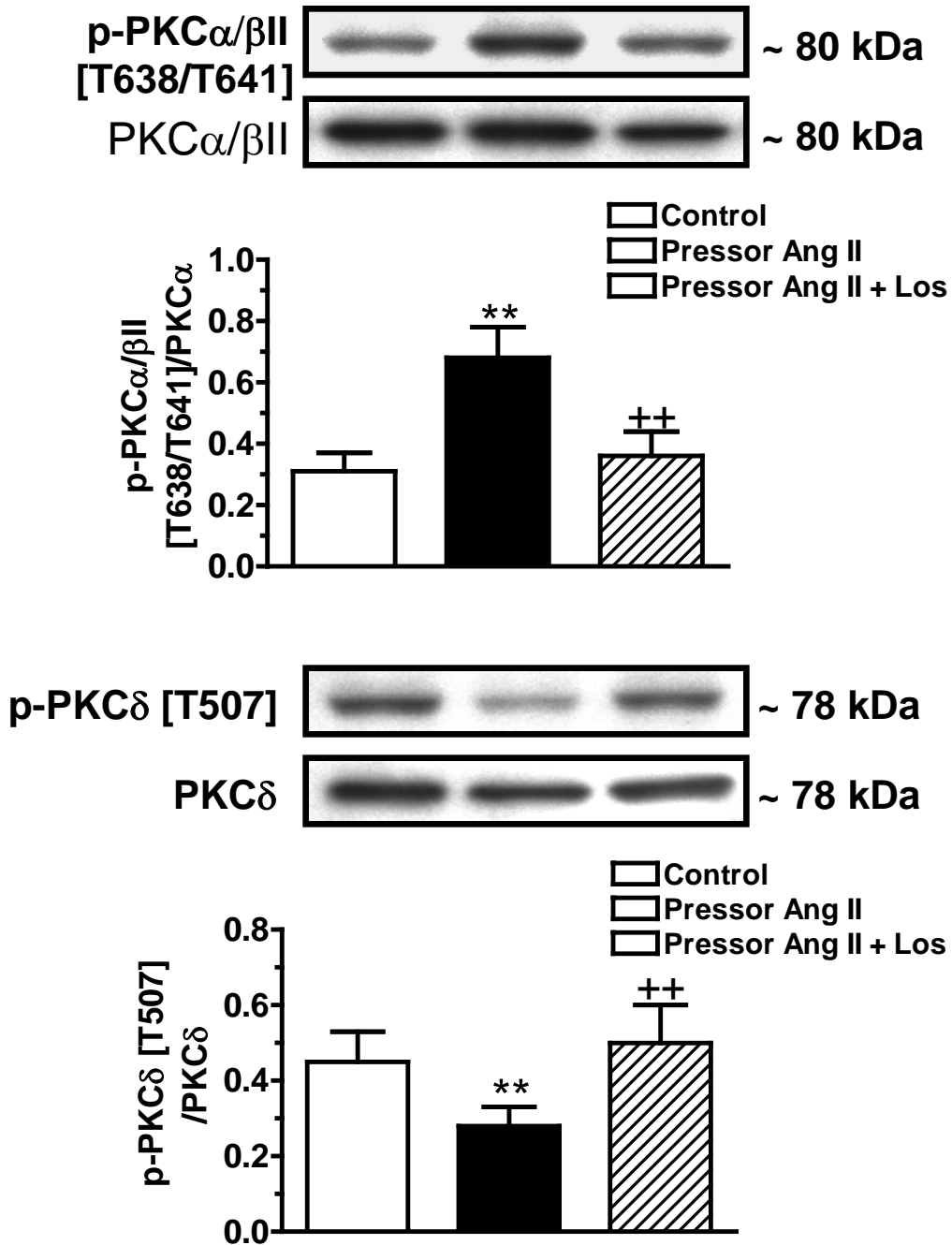


Figure S1. Effects of the pressor dose of Ang II infusion and concurrent losartan treatment for 2 weeks on phospho-PKC α/β II [T638/T641] and phospho-PKC δ [T507] signaling proteins in freshly isolated proximal tubules of the rat kidney. ** $p < 0.01$ vs. control; ++ $p < 0.01$ vs. Ang II-infused rats.

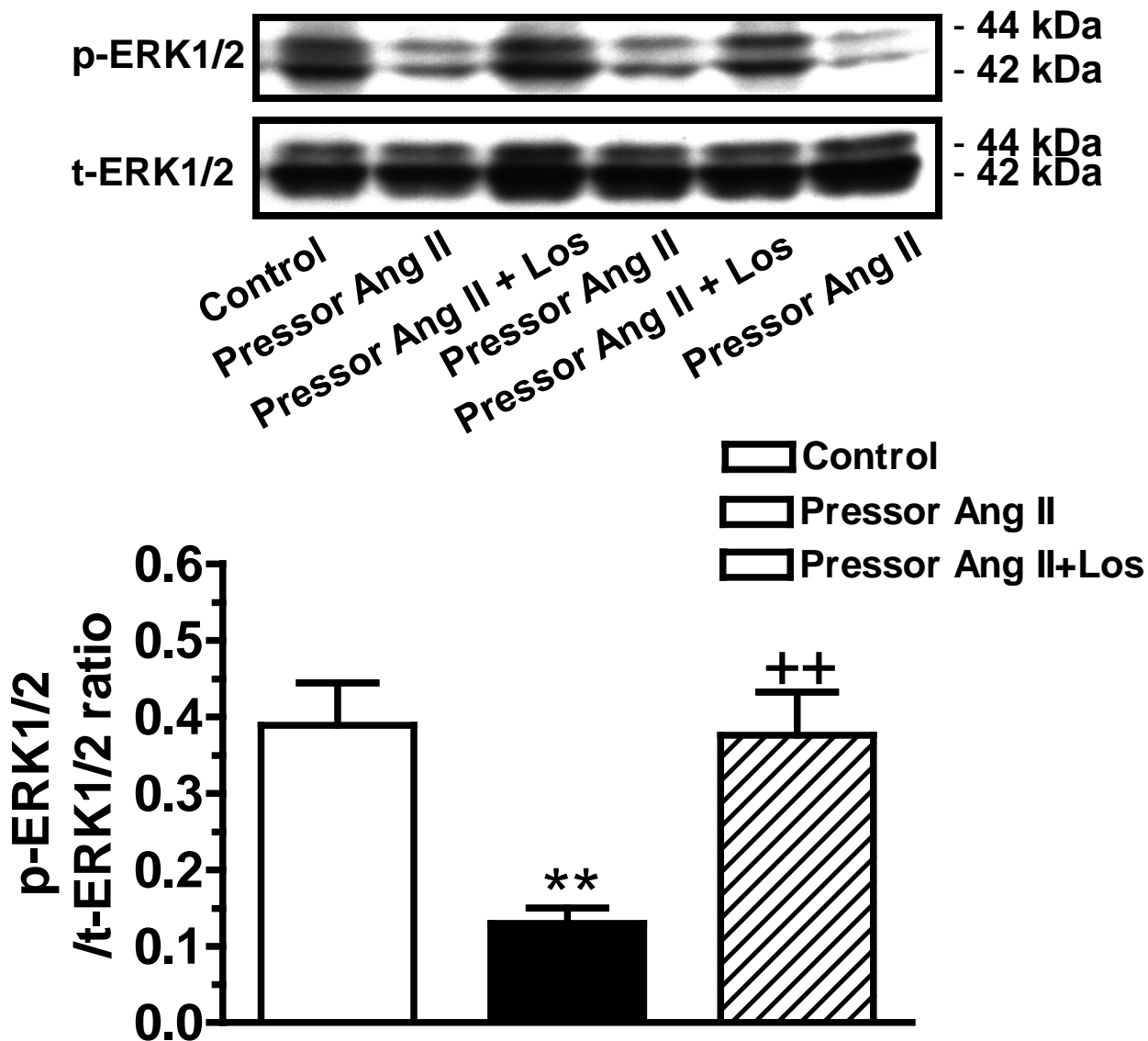


Figure S2. Effects of the pressor dose of Ang II infusion and concurrent losartan treatment for 2 weeks on phospho-ERK1/2 signaling proteins in freshly isolated proximal tubules of the rat kidney. ** $p < 0.01$ vs. control; ++ $p < 0.01$ vs. Ang II-infused rats.

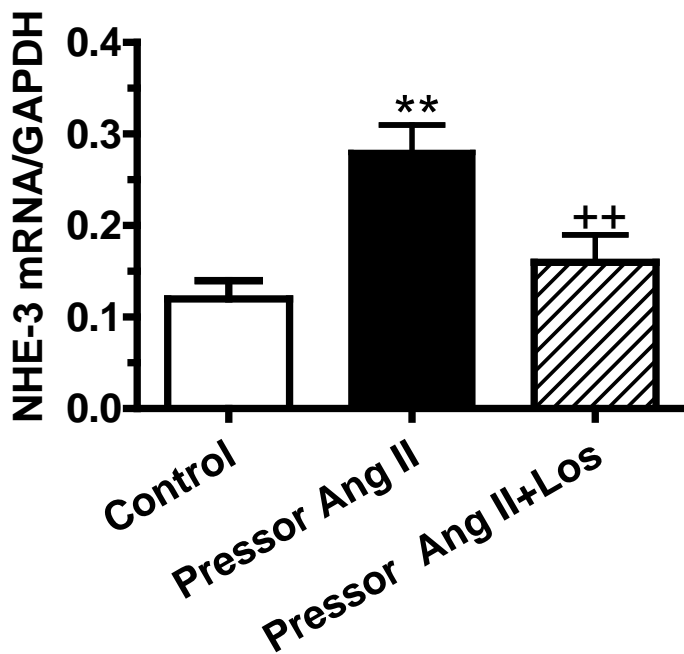
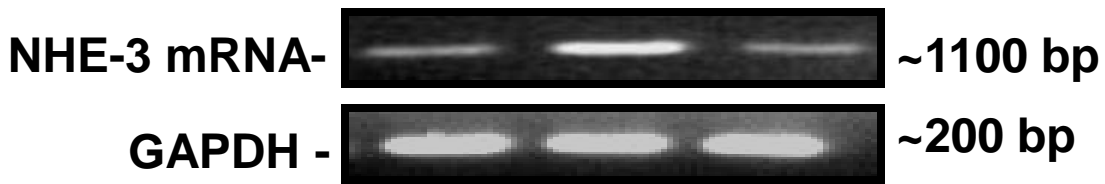


Figure S3. Effects of the pressor dose of Ang II infusion and concurrent losartan treatment for 2 weeks on NHE-3 mRNA expression in freshly isolated proximal tubules of the rat kidney. ** $p < 0.01$ vs. control; ++ $p < 0.01$ vs. Ang II-infused rats.

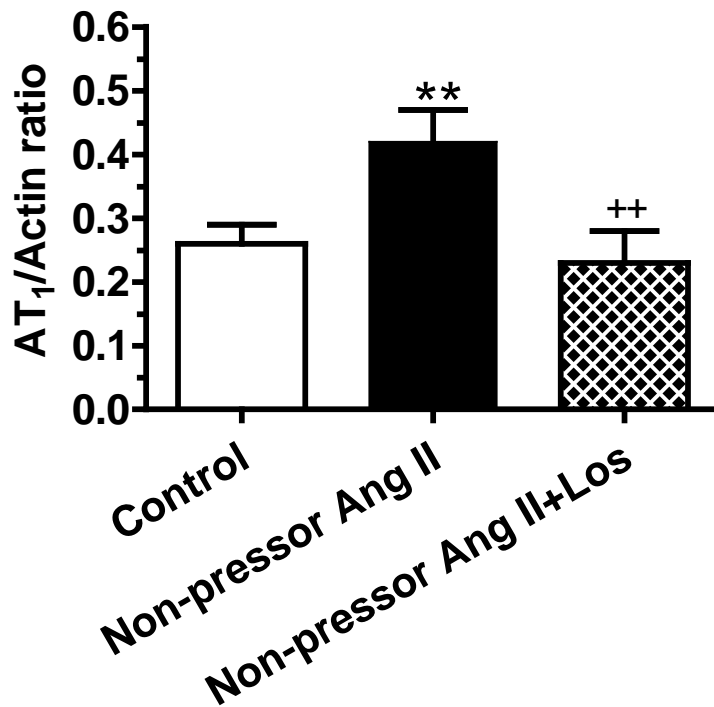
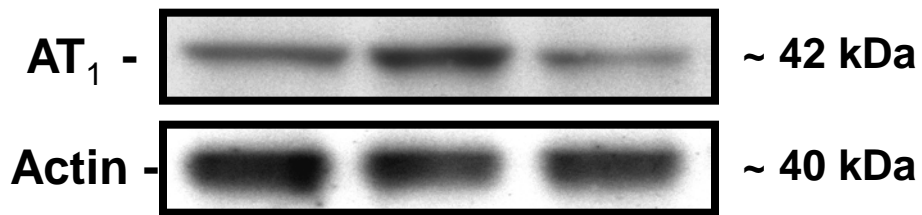


Figure S4. Effects of the non-pressor dose of Ang II infusion and concurrent losartan treatment for 2 weeks on AT₁ receptor proteins in membrane fractions of freshly isolated proximal tubules of the rat kidney. ** $p < 0.01$ vs. control; ++ $p < 0.01$ vs. Ang II-infused rats.

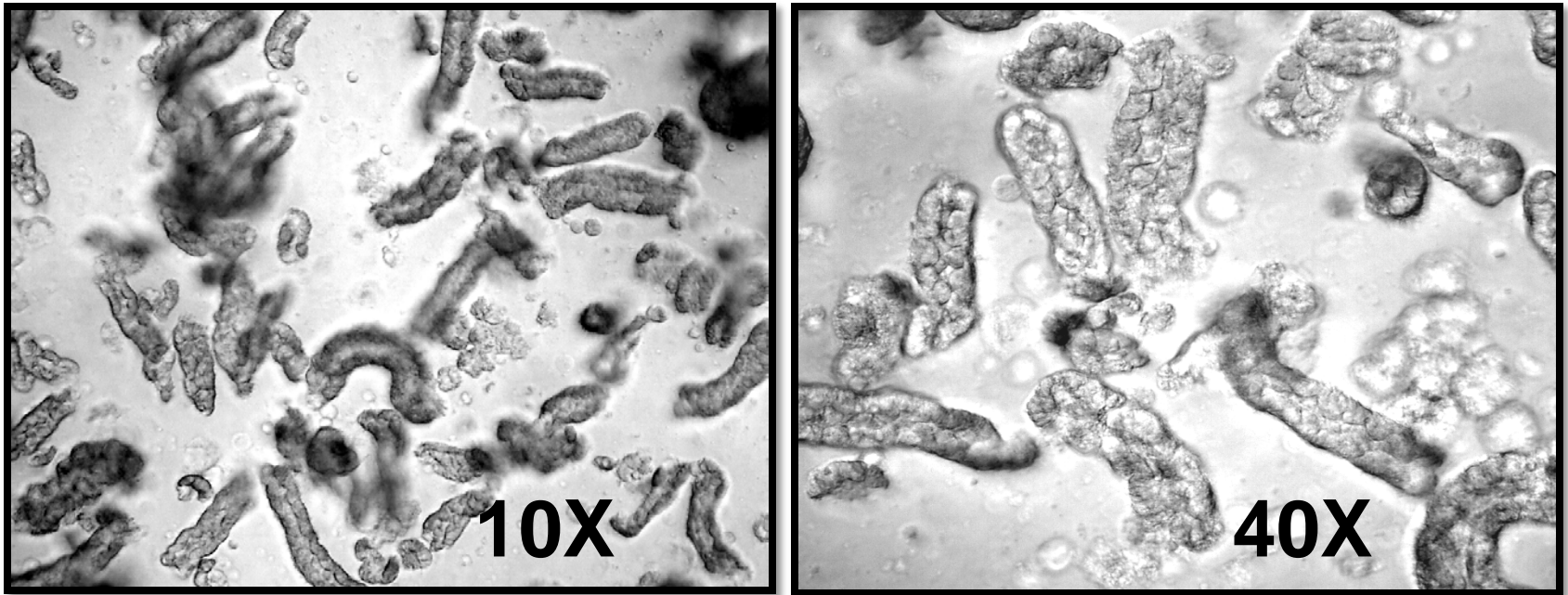


Figure S5. Representative phase-contrast micrographs of freshly isolated proximal tubules from the outer cortex of the rat kidney.

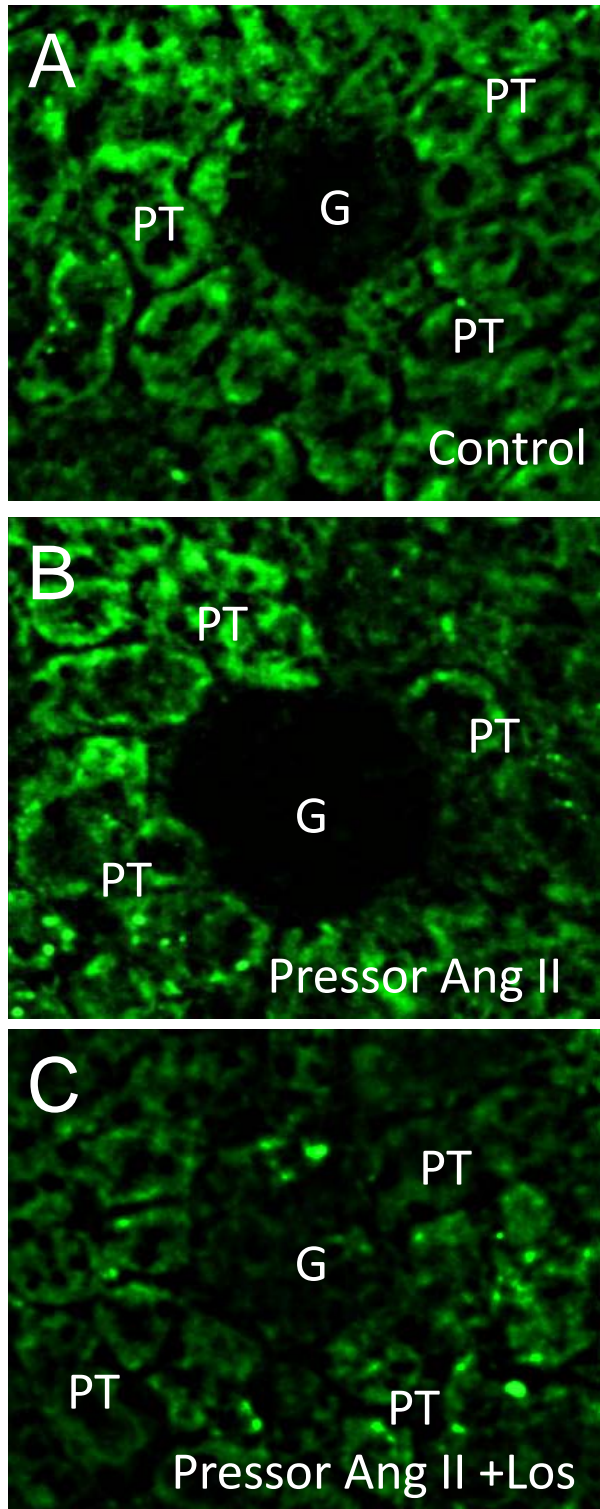


Figure S6. Effect of the pressor dose of Ang II infusion for 2 weeks on phosphorylated c-Jun [S73] immunofluorescence staining in Ang II-infused rats.

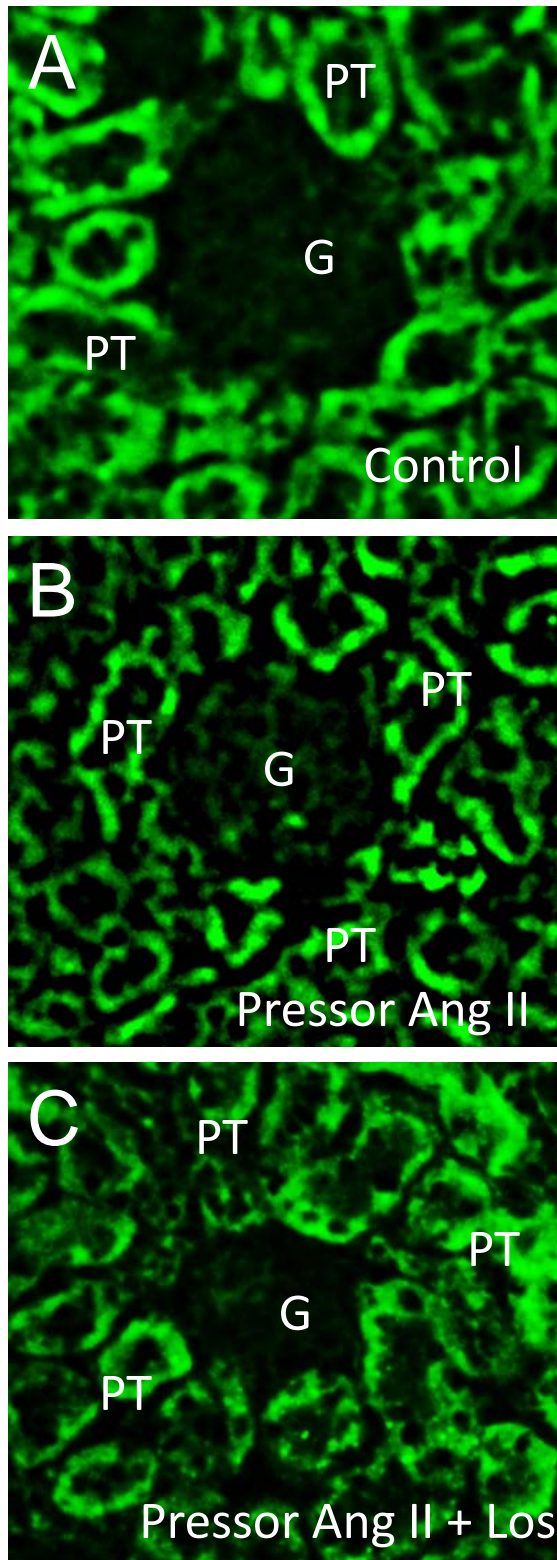


Figure S7. Effect of the pressor dose of Ang II infusion for 2 weeks on phosphorylated Src [Y418] immunofluorescence staining in Ang II-infused rats.

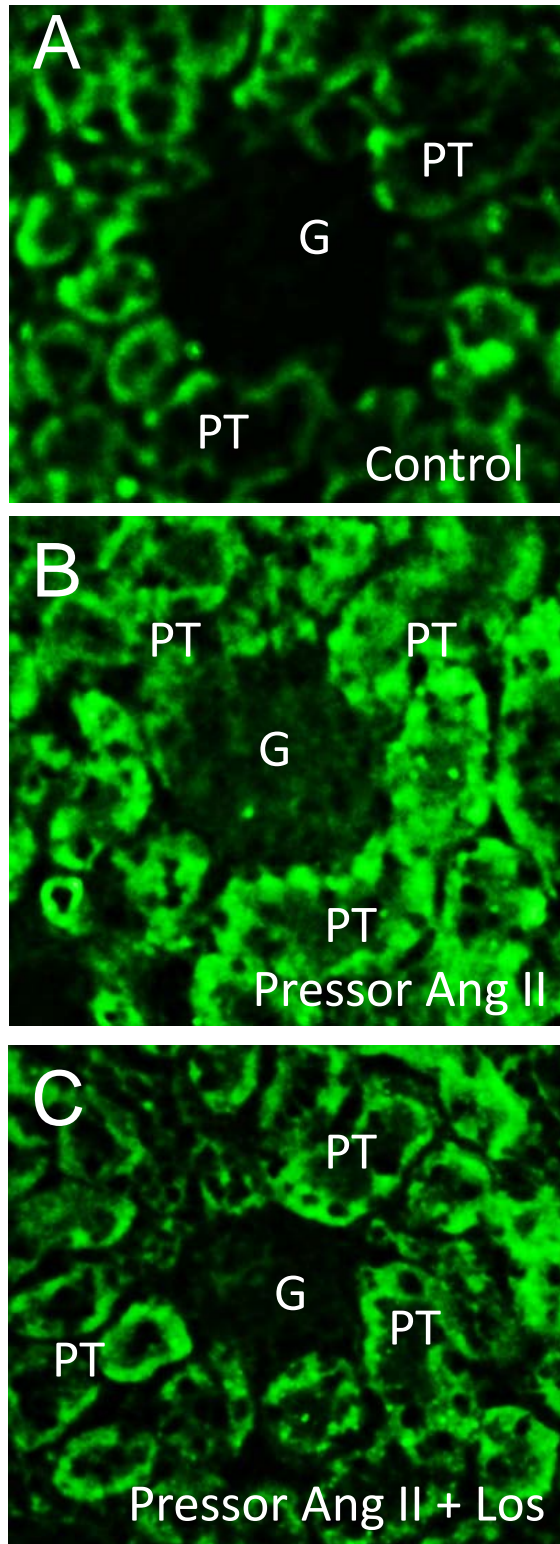


Figure S8. Effect of the pressor dose of Ang II infusion for 2 weeks on phosphorylated Src [Y529] immunofluorescence staining in Ang II-infused rats.

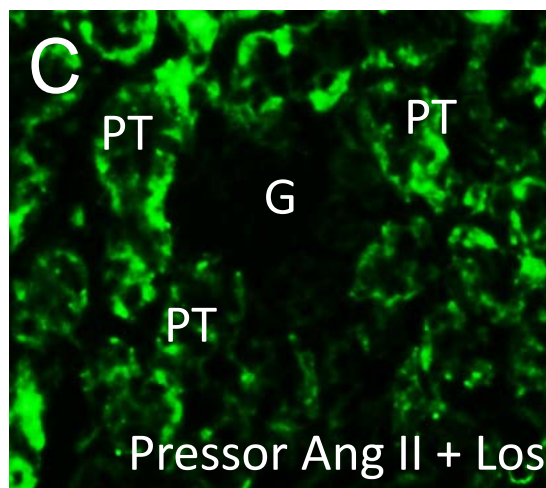
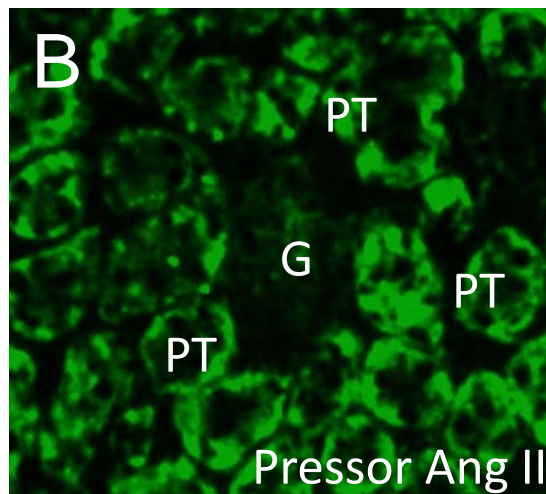
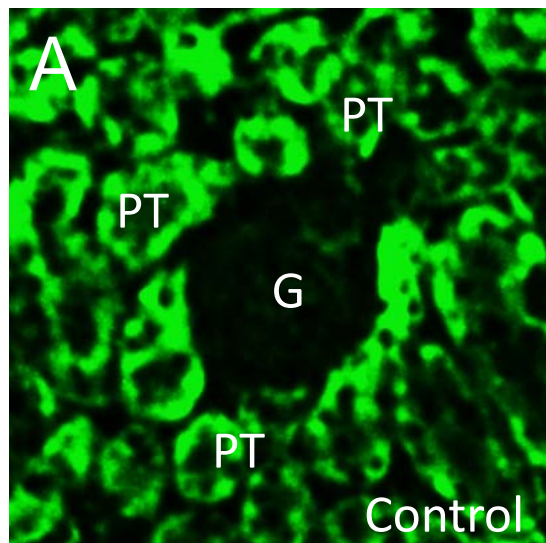


Figure S9. Effect of the pressor dose of Ang II infusion for 2 weeks on phosphorylated Rb [807+S811] immunofluorescence staining in Ang II-infused rats.

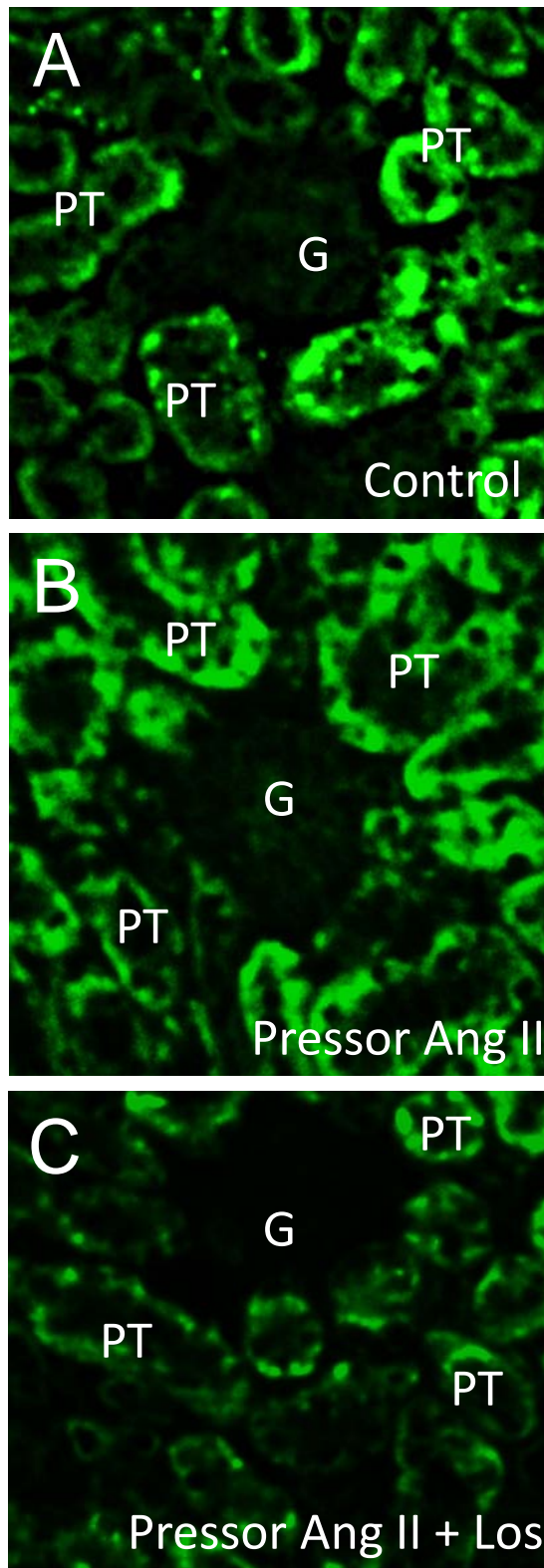


Figure S10. Effect of the pressor dose of Ang II infusion for 2 weeks on phosphorylated STAT-3 [S727] immunofluorescence staining in Ang II-infused rats.