

Supporting Information

Cozzo Picca et al. 10.1073/pnas.1103810108

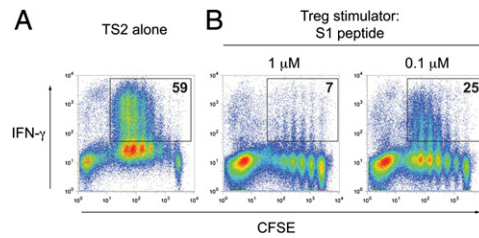


Fig. S1. $6.5^{\text{hi}}\text{CD4}^+\text{CD25}^+$ T cells exhibit Treg cell function. Representative dot plots ($n = 3$) showing IFN- γ production by CFSE-labeled CD4^+ LN cells from TS2 mice following in vitro culture with (A) S2 peptide only or (B) with S2 peptide, $6.5^{\text{hi}}\text{CD4}^+\text{CD25}^+$ LN cells from TS1 \times HA28 mice, and indicated amounts of S1 peptide. Percentages of IFN- γ^+ TS2 cells are indicated. Data are representative of three independent experiments.

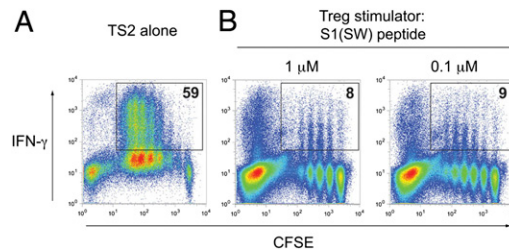


Fig. S2. $\text{V}\alpha 8.3^+\text{V}\beta 10^+\text{CD4}^+\text{CD25}^+$ T cells exhibit Treg cell function. Representative dot plots ($n = 3$) showing IFN- γ production by CFSE-labeled CD4^+ LN cells from TS2 mice following in vitro culture with (A) S2 peptide only or (B) with S2 peptide, $\text{V}\alpha 8.3^+\text{V}\beta 10^+\text{CD4}^+\text{CD25}^+$ LN cells from TS1(SW) \times Pev(SW)HA mice, and indicated amounts of S1(SW) peptide. Percentages of IFN- γ^+ TS2 cells are indicated. Data are representative of three independent experiments.

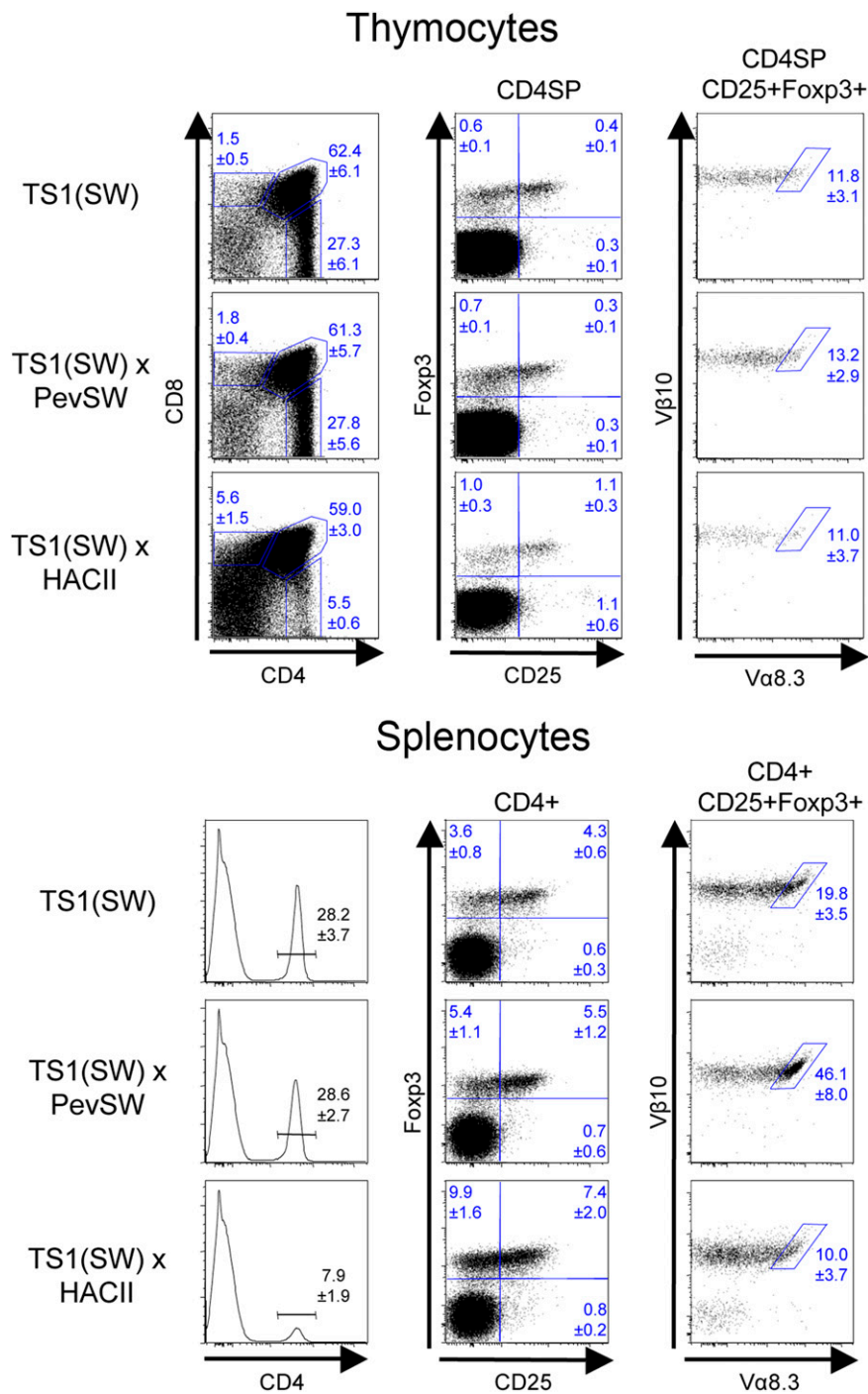


Fig. S3. Enhanced thymocyte deletion does not promote Va8.3⁺ Treg cell formation in TS1(SW) × HACII mice. Representative dot plots show CD4 versus CD8 expression (*Left*), CD25 versus Foxp3 expression on CD4⁺CD8⁻ events (*Center*), and Va8.3 versus Vβ10 expression on CD4⁺CD8⁻CD25⁺Foxp3⁺ events (*Right*). Thymocytes (*Upper*) and splenocytes (*Lower*) from TS1(SW), TS1(SW) × Pev(SW)HA, and TS1(SW) × HACII mice. Mean percentages ± SEM in indicated gates are shown. *n* = 4–6 for each condition.

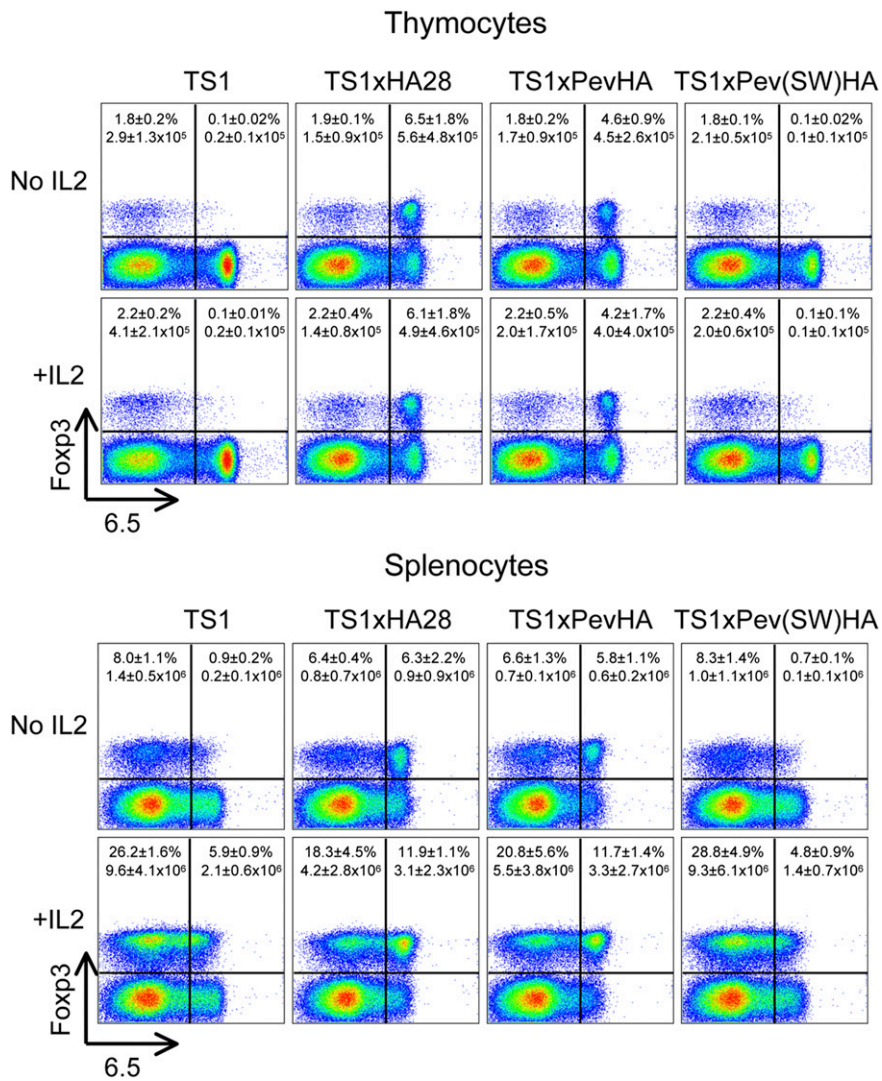


Fig. S4. Agonist-induced IL-2 production does not promote Treg cell formation in TS1 × HA28 and TS1 × PevHA mice. Representative dot plots ($n = 3$) show Foxp3 versus 6.5 staining of CD4SP thymocytes (*Upper*) and of CD4⁺ splenocytes (*Lower*) obtained from TS1, TS1 × HA28, TS1 × PevHA, and TS1 × Pev(SW)HA mice either without IL-2 treatment ("No IL2") or 5 d after injection of IL-2:anti-IL2 complexes ("+IL-2"). The percentages and numbers of cells ± SEM in the indicated quadrants are shown.