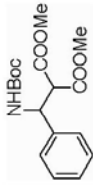


jun-8-94-a-product

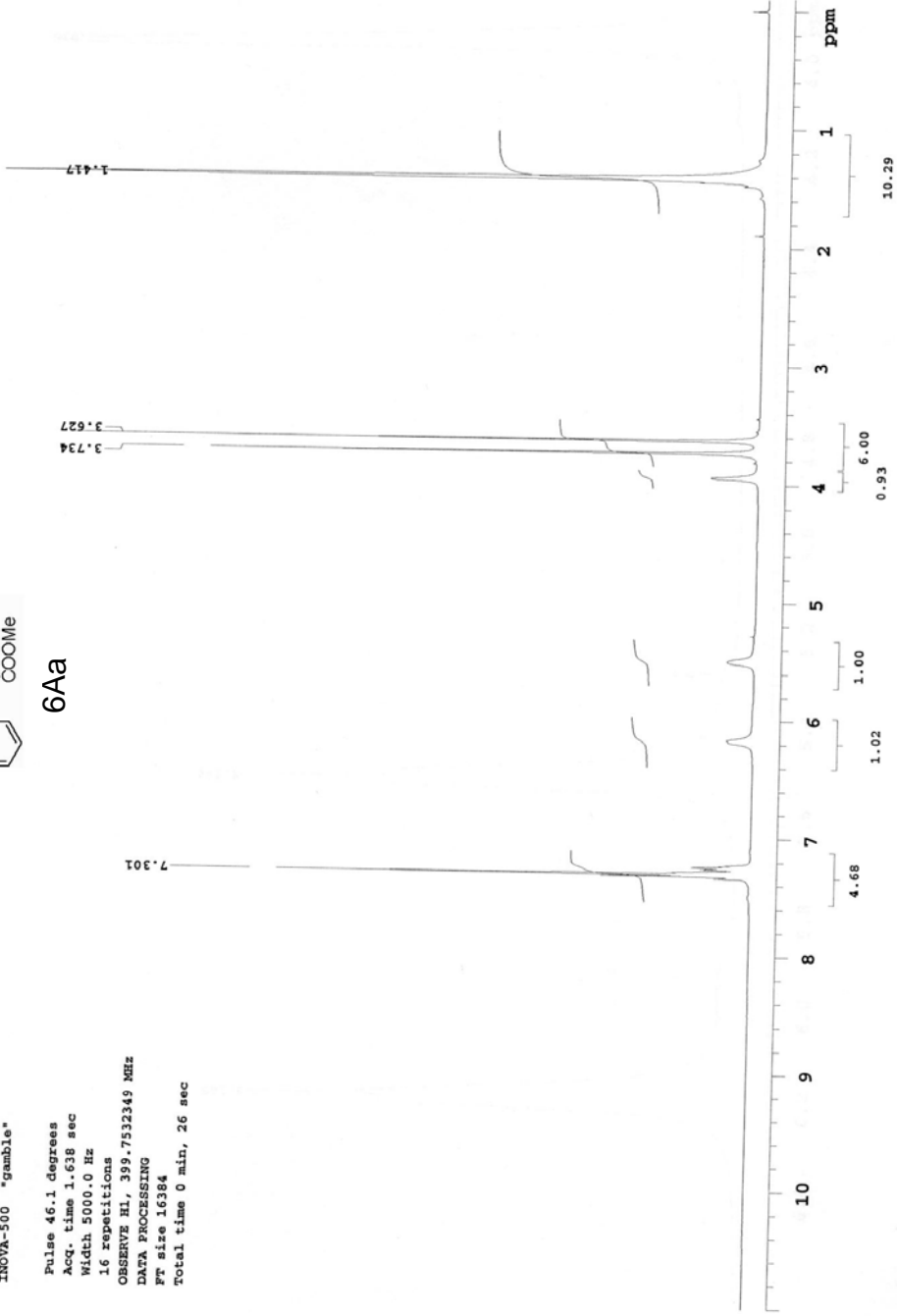
Pulse Sequence: s2pul

Solvent: CDCl3  
Ambient temperature  
File: jun-8-94-a-product  
INOVA-500 "gamble"



6Aa

Pulse 46.1 degrees  
Acq. time 1.638 sec  
Width 5000.0 Hz  
16 repetitions  
OBSERVE H1, 399.752349 MHz  
DATA PROCESSING  
FT size 16384  
Total time 0 min, 26 sec



94-a-product-c13

Pulse Sequence: s2pul

Solvent: CDCl3

Ambient temperature

File: Jun-8-94-a-product-c13

INOVA-500 "gamble"

Pulse 53.1 degrees

Acq. time 1.199 sec

Width 25000.0 Hz

1853 repetitions

OBSERVE c13, 100.5180435 MHz

DECOUPLE H1, 399.752450 MHz

Power 37 dB

on during acquisition

off during delay

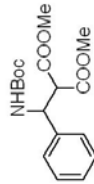
GARP-1 modulated

DATA PROCESSING

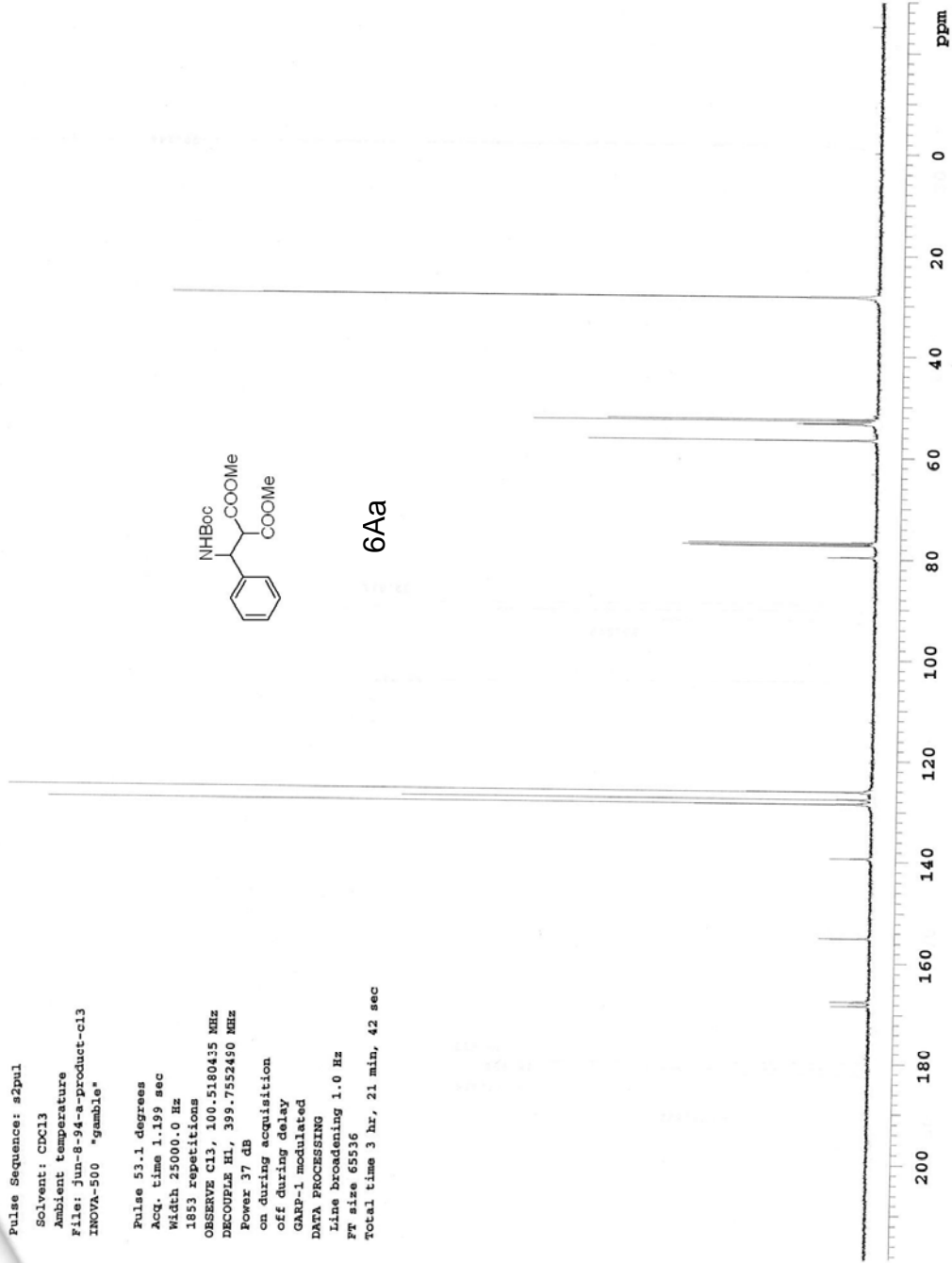
Line broadening 1.0 Hz

Ft size 65536

Total time 3 hr, 21 min, 42 sec



6Aa



jun-8-45-a-product

Pulse Sequence: s2pul

Solvent: CDCl3

Ambient temperature

INOVA-400 "fid"

Pulse 46.1 degrees

Acq. time 1.638 sec

Width 5000.0 Hz

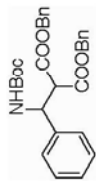
16 repetitions

OBSERVE H1, 399.7532538 MHz

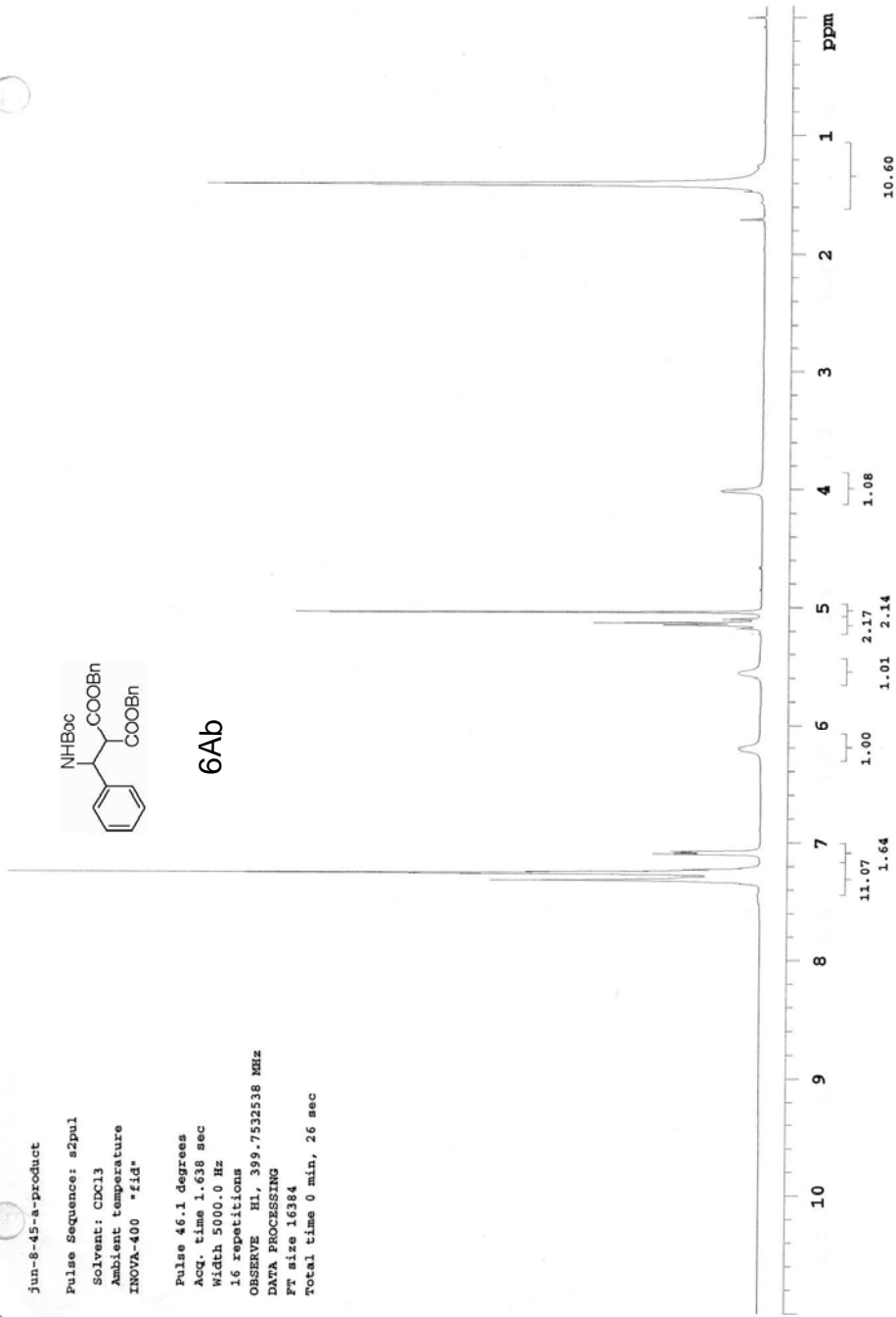
DATA PROCESSING

FT size 16384

Total time 0 min, 26 sec



6Ab

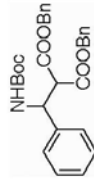


Jun-8-45-a-product-cl3

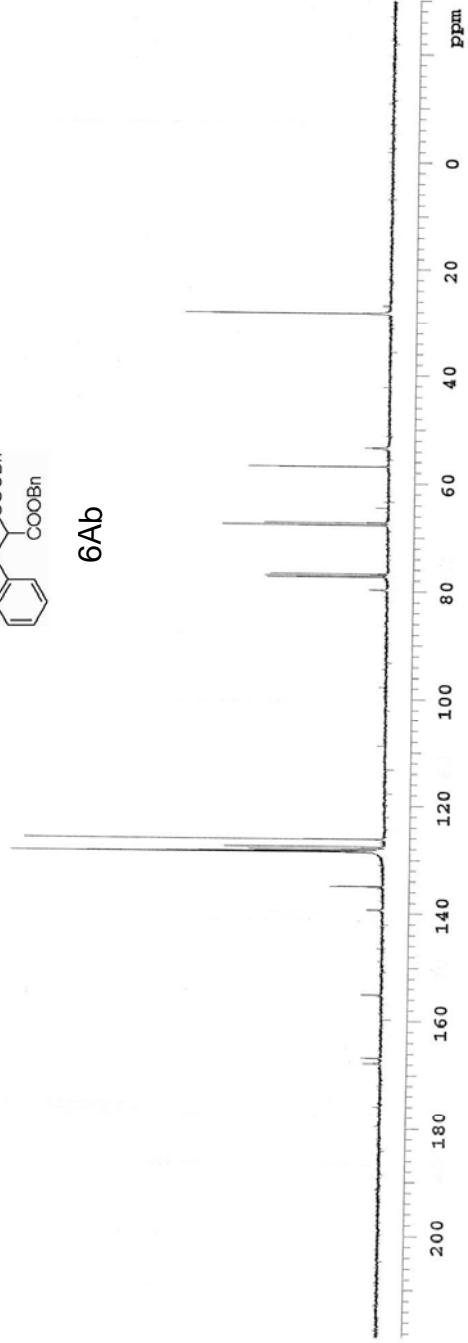
Pulse Sequence: s2pul

Solvent: CDCl3  
Ambient temperature  
File: Jun-8-45-a-product-cl3  
INOVA-500 \*cosy\*

Pulse 53.1 degrees  
Acq. time 1.199 sec  
Width 25000.0 Hz  
946 repetitions  
OBSERVE C13, 100.5180426 MHz  
DECOUPLE H1, 399.7552472 MHz  
Power 37 dB  
on during acquisition  
off during delay  
GARP-1 modulated  
DATA PROCESSING  
Line broadening 1.0 Hz  
FT size 65536  
Total time 67 hr, 7 min, 21 sec



6Ab



jun-8-99-a-product

Pulse Sequence: s2pul

Solvent: CDCl3

Ambient temperature

File: jun-8-99-a-product

INOVA-500 "gamble"

Pulse 46.1 degrees

Acq. time 1.638 sec

Width 5000.0 Hz

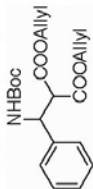
16 repetitions

OBSERVE H1, 399.7532345 MHz

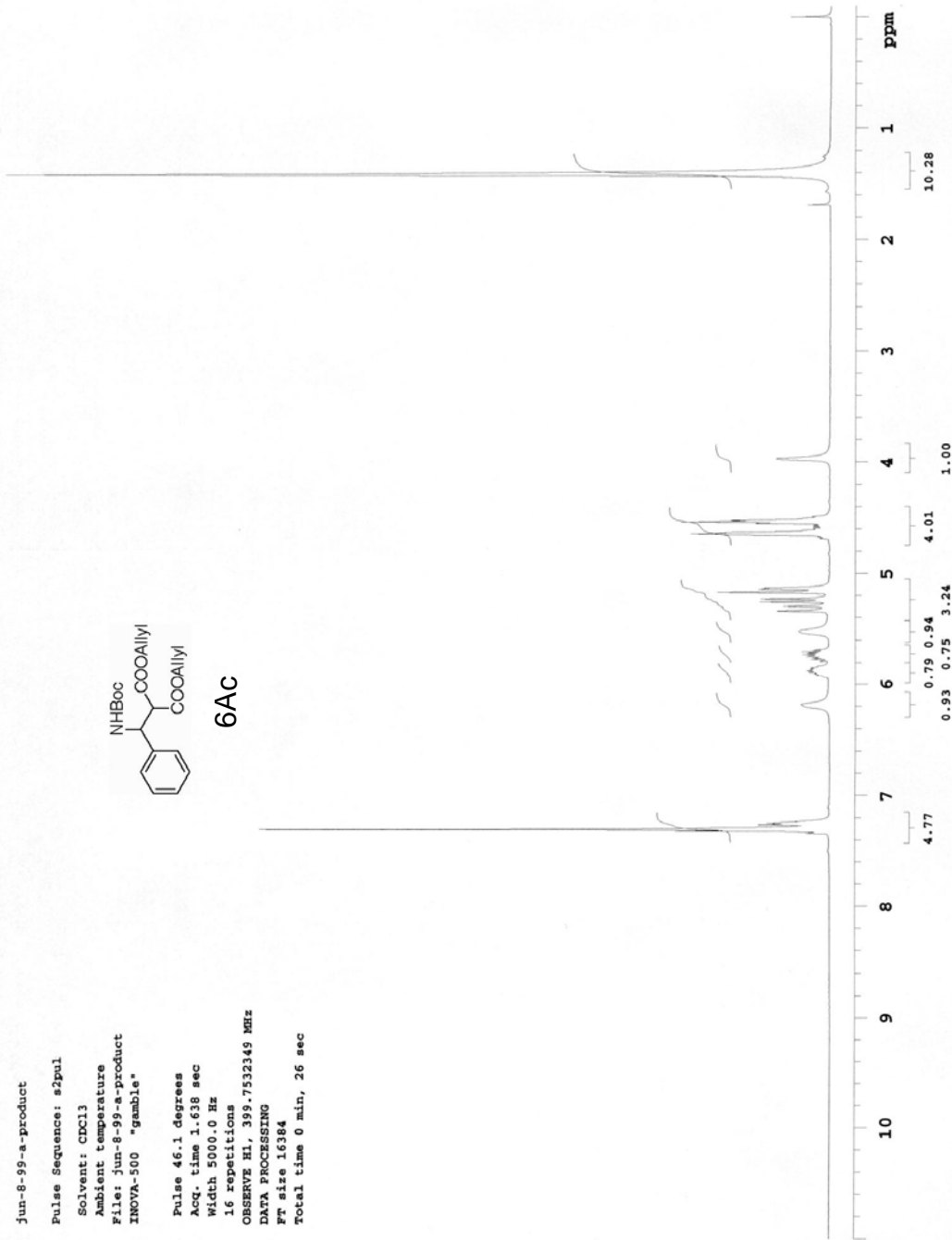
DATA PROCESSING

FT size 16384

Total time 0 min, 26 sec



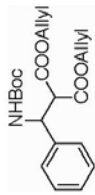
6Ac



6-99-a-product-c13

Pulse Sequence: s2pul  
Solvent: CDCl3  
Ambient temperature  
File: Jun-8-99-a-product-c13  
INOVA-500 "gamble"

Pulse 53.1 degrees  
Acq. time 1.199 sec  
Width 25000.0 Hz  
582 repetitions  
OBSERVE C13, 100.5180359 MHz  
DECOUPLE H1, 399.7552490 MHz  
Power 37 dB  
on during acquisition  
off during delay  
GARP-1 modulated  
DATA PROCESSING  
Line broadening 1.0 Hz  
F2 size 65536  
Total time 33 hr, 37 min, 0 sec



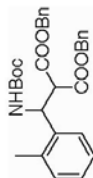
6AC



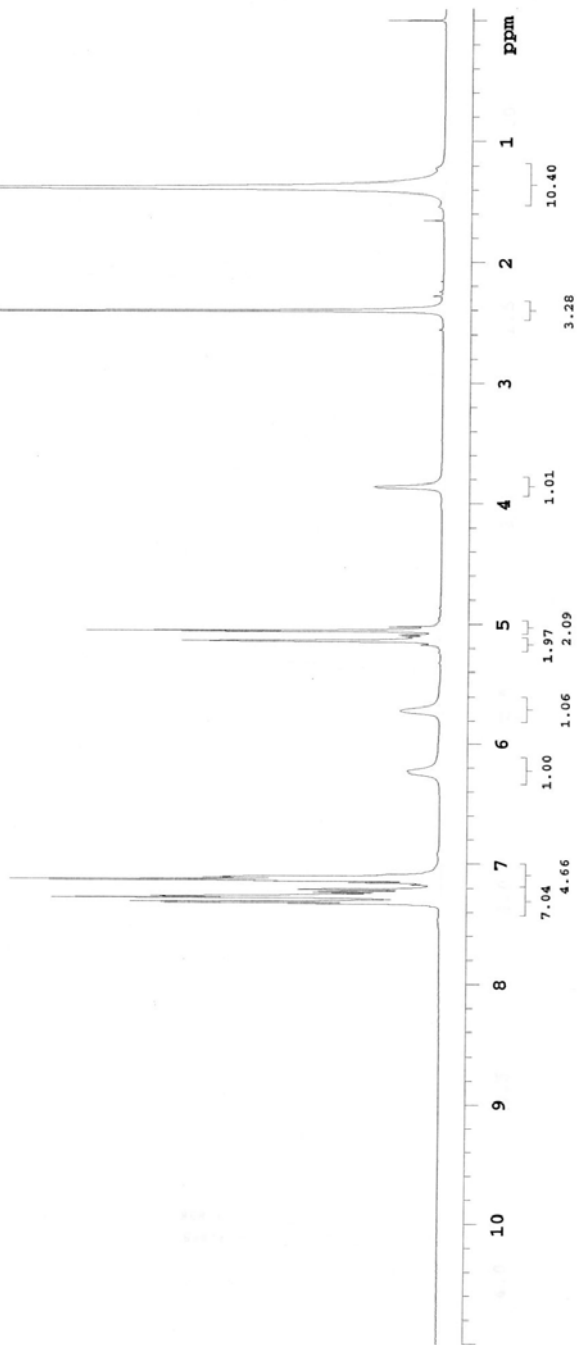
jun-8-59-a-product

Pulse Sequence: s2pul  
Solvent: CDCl3  
Ambient temperature  
File: jun-8-59-a-product  
INOVA-500 "gamble"

Pulse 46.1 degrees  
Acq. time 1.638 sec  
Width 5000.0 Hz  
16 repetitions  
OBSERVE H1, 399.7532345 MHz  
DATA PROCESSING  
FT size 16384  
Total time 0 min, 26 sec



6Bb



Jun-8-59-a-product-cl3

Pulse Sequence: s2pul

Solvent: CDCl3

Ambient temperature

File: Jun-8-59-a-product-cl3

INOVA-500 "gamble"

Pulse 53.1 degrees

Acq. time 1.199 sec

Width 25000.0 Hz

2316 repetitions

OBSERVE C13, 100.5180359 MHz

DECOUPLE H1, 399.7552490 MHz

Power 37 dB

on during acquisition

off during delay

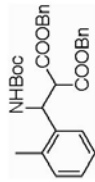
GARP-1 modulated

DATA PROCESSING

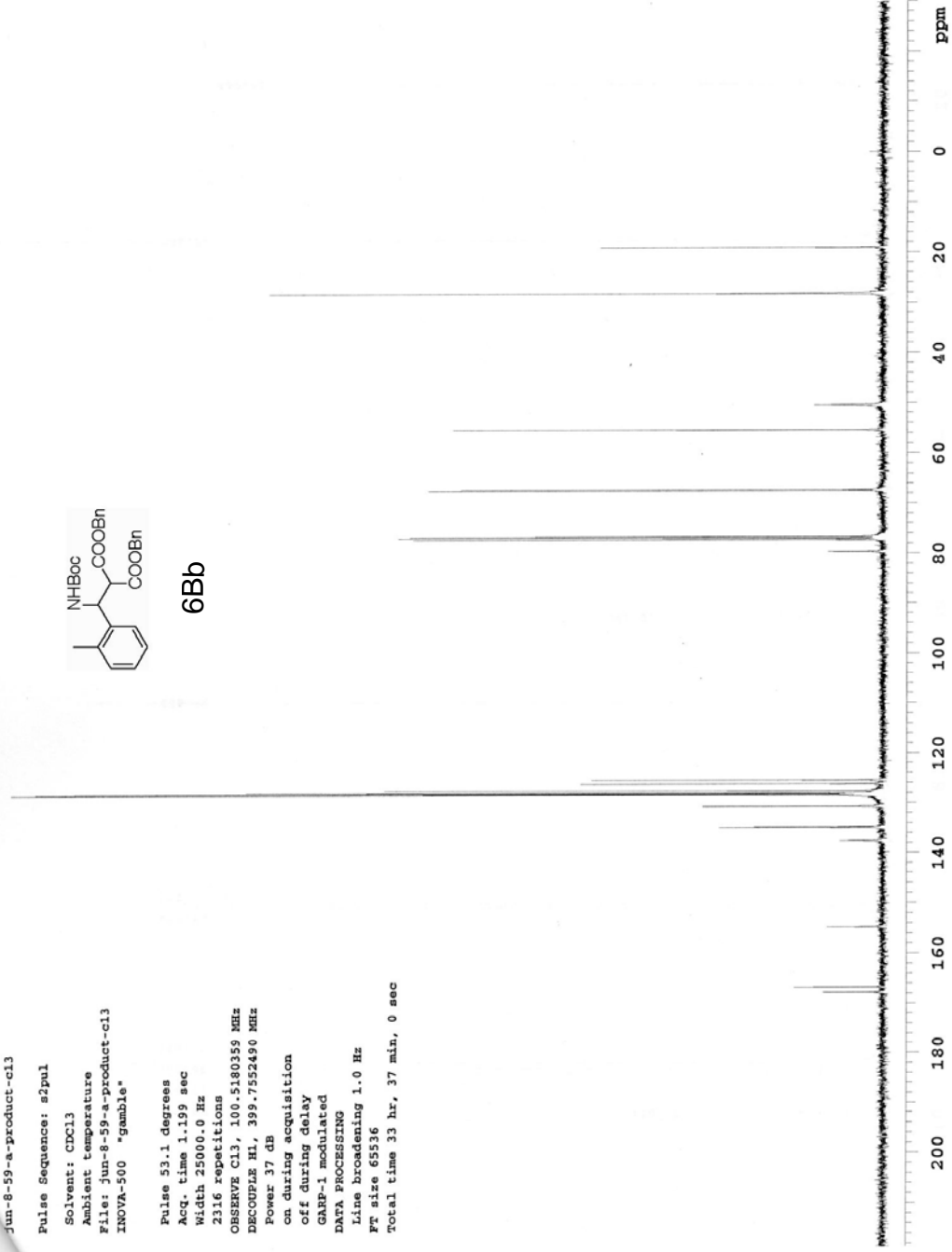
Line broadening 1.0 Hz

Ft size 65536

Total time 33 hr, 37 min, 0 sec



6Bb





Jun-8-49-a-product

Pulse Sequence: s2pul

Solvent: CDCl3

Ambient temperature

File: Jun-8-49-a-product

INOVA-500 "gamble"

Pulse 46.1 degrees

Acq. time 1.638 sec

Width 5000.0 Hz

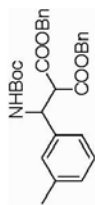
16 repetitions

OBSERVE HL, 399.7532349 MHz

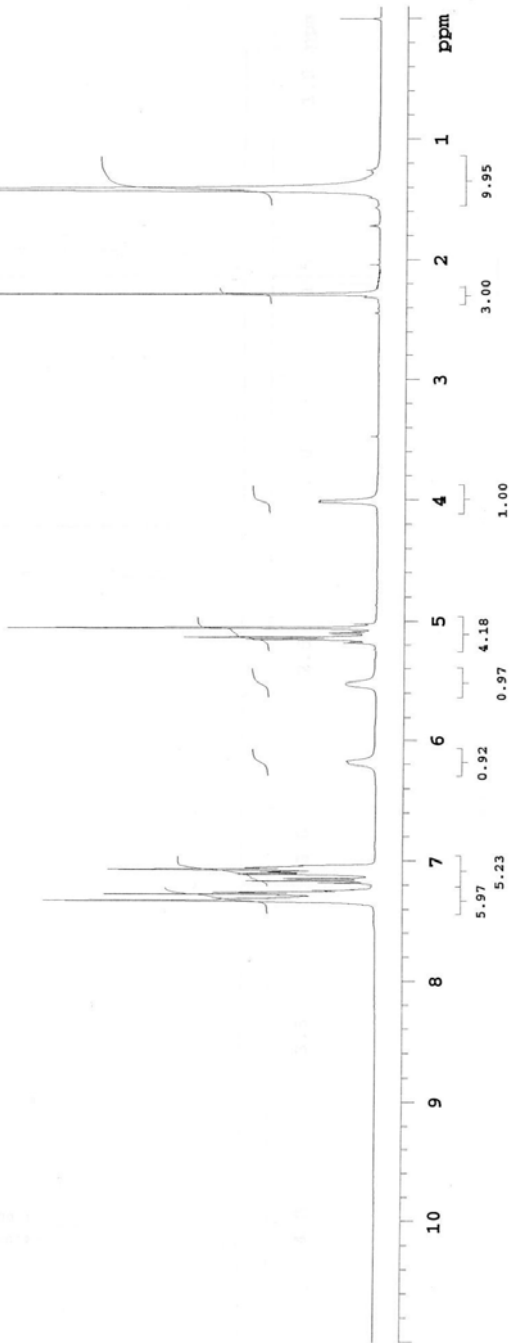
DATA PROCESSING

Ft size 16384

Total time 0 min, 26 sec



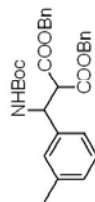
6Cb



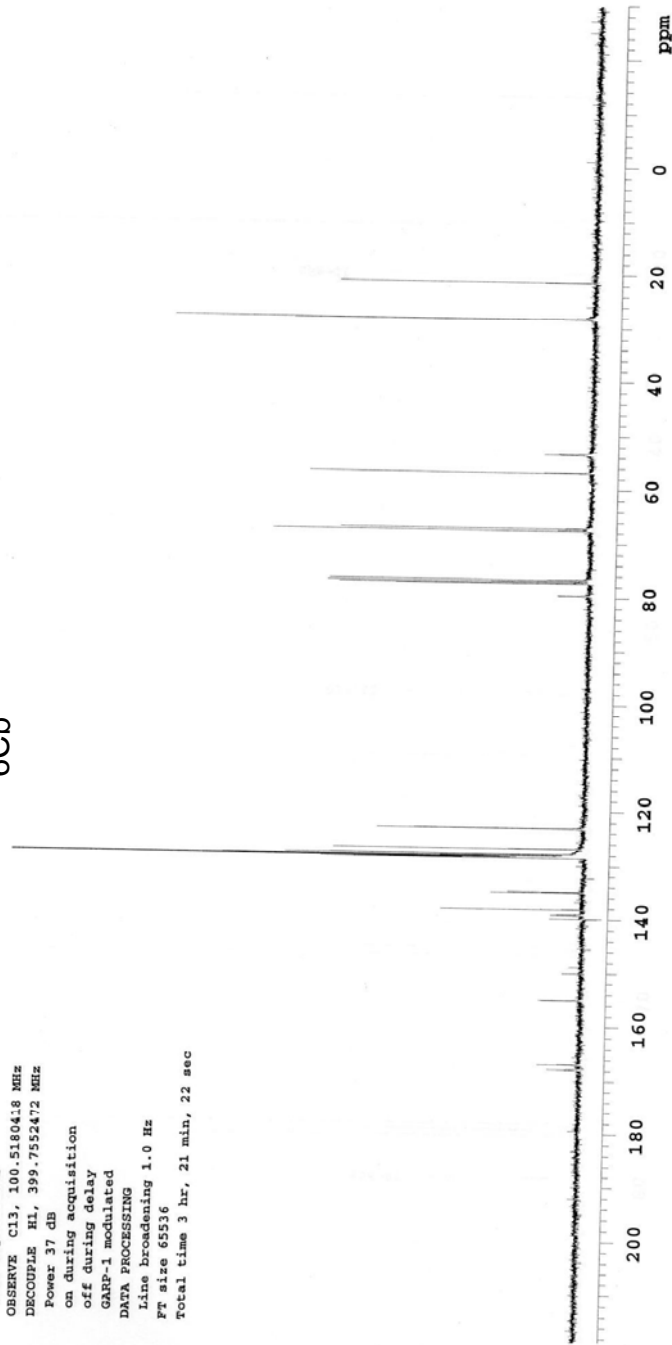
13C OBSERVE

Pulse Sequence: s2pul  
Solvent: CDCl3  
Ambient temperature  
INOVA-400 "fid"

Pulse 53.1 degrees  
Acq. time 1.199 sec  
Width 25000.0 Hz  
1328 repetitions  
OBSERVE C13, 100.5180418 MHz  
DECOUPLE H1, 399.7552472 MHz  
Power 37 dB  
on during acquisition  
off during delay  
GARP-1 modulated  
DATA PROCESSING  
Line broadening 1.0 Hz  
FT size 65536  
Total time 3 hr, 21 min, 22 sec



6Cb



Jun-8-46-b-product

Pulse Sequence: s2pul

Solvent: CDCl3

Ambient temperature

File: Jun-8-46-b-product

INOVA-500 "gamble"

Pulse 46.1 degrees

Acq. time 1.638 sec

Width 5000.0 Hz

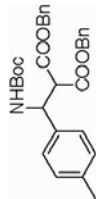
16 repetitions

OBSERVE F1, 399.7532349 MHz

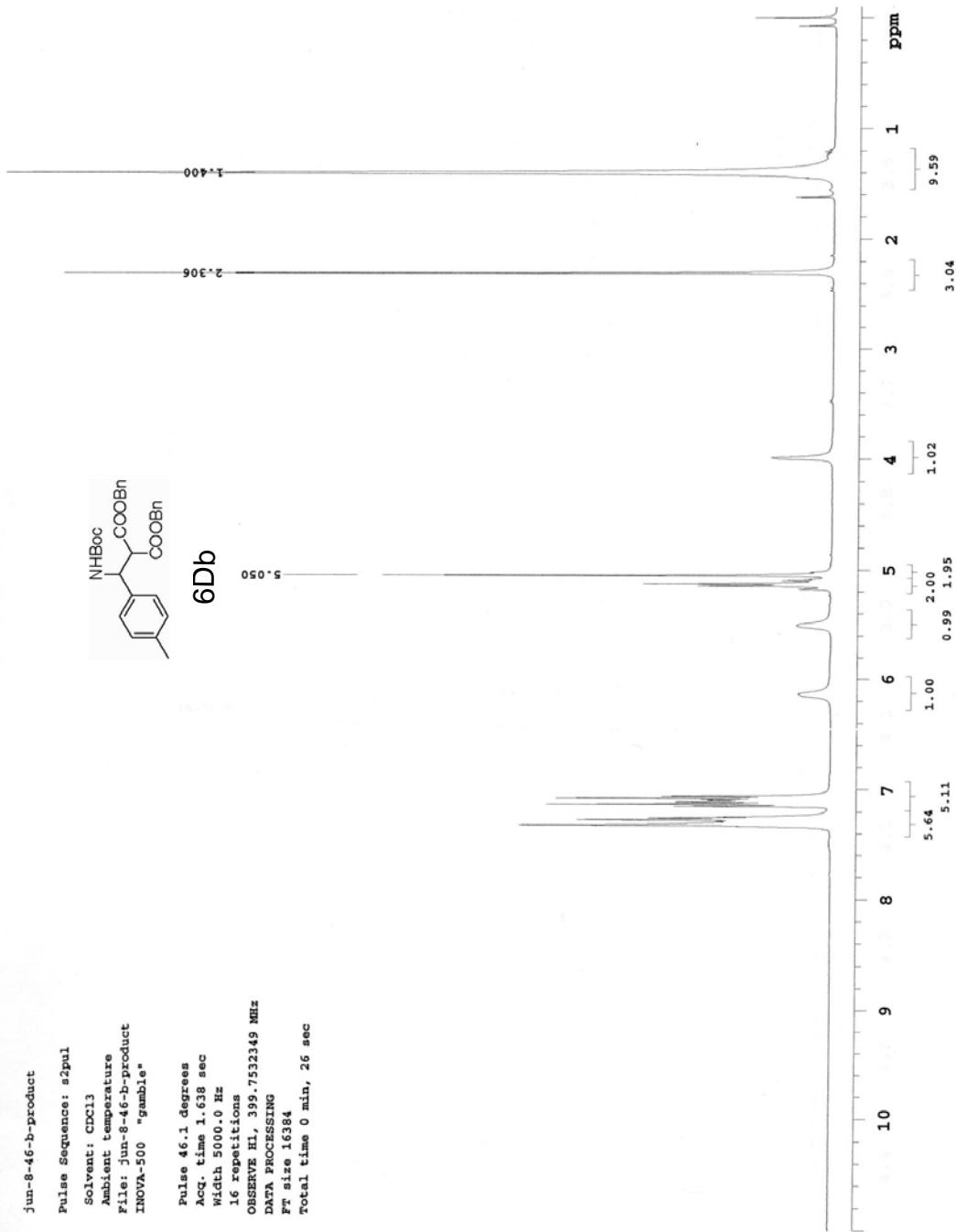
DATA PROCESSING

FT size 16384

Total time 0 min, 26 sec



6Db



Jun-8-46-b-product-c13

Pulse Sequence: s2pul

Solvent: CDCl3

Ambient temperature

File: Jun-8-46-b-product-c13

INOVA-500 "gamble"

Pulse 53.1 degrees

Acq. time 1.199 sec

Width 25000.0 Hz

2461 repetitions

OBSERVE C13, 100.5180359 MHz

DECOUPLE H1, 399.7552490 MHz

Power 37 dB

on during acquisition

off during delay

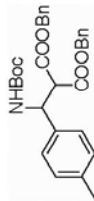
GARP-1 modulated

DATA PROCESSING

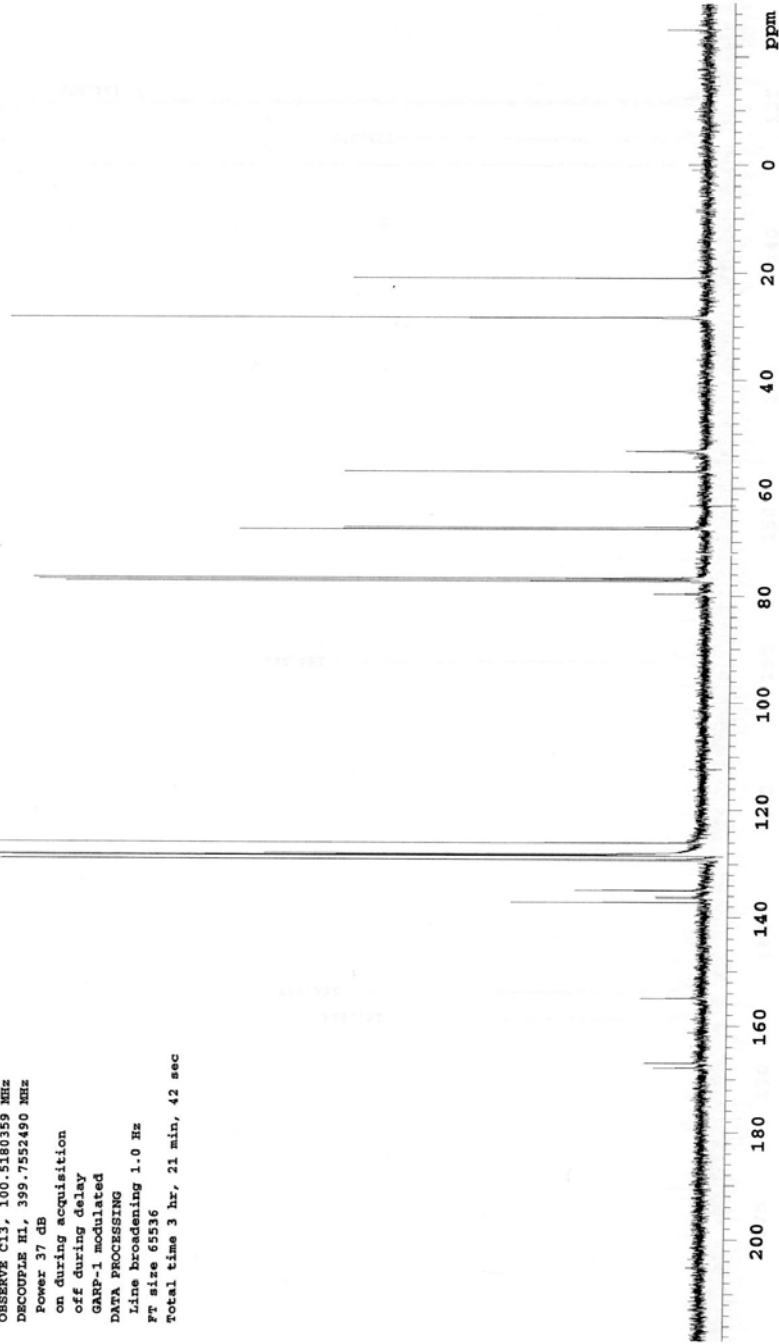
Line broadening 1.0 Hz

Ft size 65536

Total time 3 hr, 21 min, 42 sec



6Db



jun-8-54-a-product

Pulse Sequence: s2pul

Solvent: CDCl3

Ambient temperature

File: jun-8-54-a-product

INNOVA-500 "gamble"

Pulse 46.1 degrees

Acq. time 1.638 sec

Width 5000.0 Hz

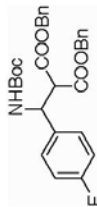
16 repetitions

OBSERVE H1, 399.7532654 MHz

DATA PROCESSING

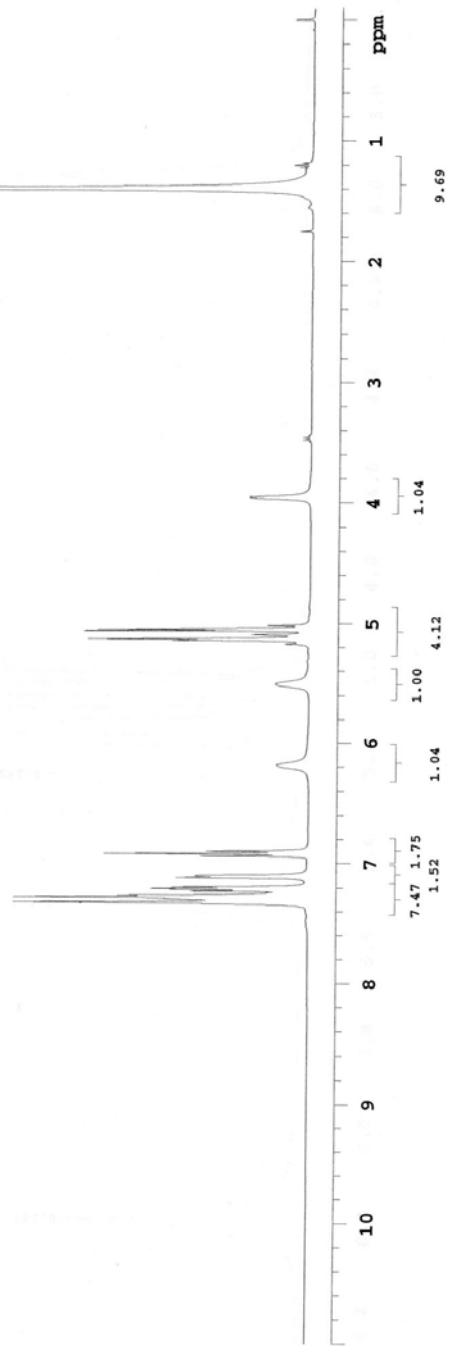
FT size 16384

Total time 0 min, 26 sec



6Eb

1.397



jun-8-54-a-product-cl3

Pulse Sequence: s2pul

Solvent: CDCl3

Ambient temperature

File: jun-8-54-a-product-cl3

INOVA-500 "gamble"

Pulse 53.1 degrees

Acq. time 1.199 sec

Width 25000.0 Hz

2400 repetitions

OBSERVE C13, 100.5180435 MHz

DECOUPLE H1, 399.7552490 MHz

Power 37 dB

on during acquisition

off during delay

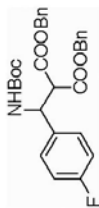
GARP-1 modulated

DATA PROCESSING

Line broadening 1.0 Hz

Ft size 65536

Total time 33 hr, 37 min, 0 sec



6Eb



jun-8-55-a-product

Pulse Sequence: s2pul

Solvent: CDCl3

Ambient temperature

File: Jun-8-55-a-product

INOVA-500 "gamb18"

Pulse 46.1 degrees

Acq. time 1.638 sec

Width 5000.0 Hz

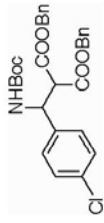
16 repetitions

OBSERVE H1, 399.7532349 MHz

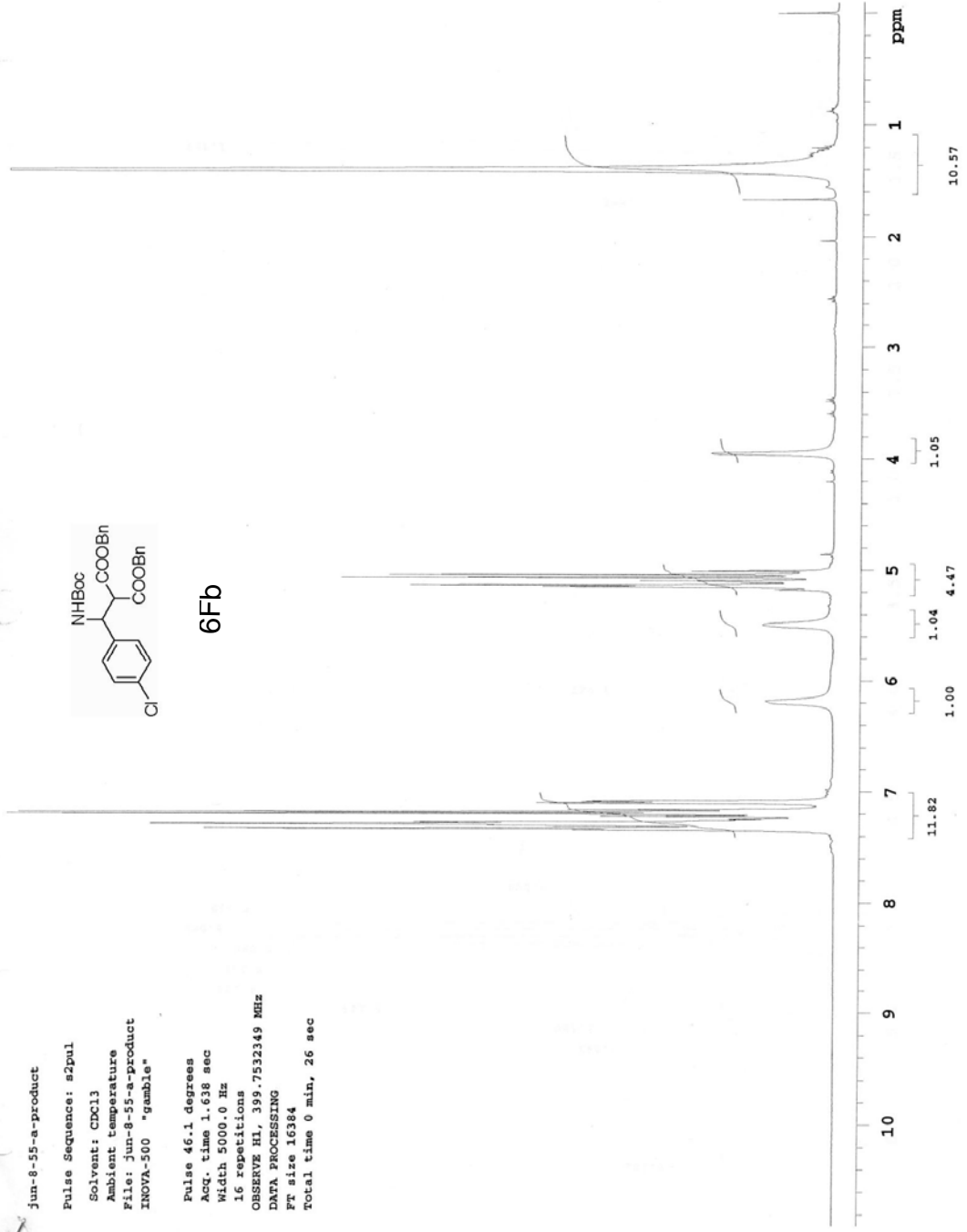
DATA PROCESSING

FT size 16384

Total time 0 min, 26 sec



6Fb



10  
9  
8  
7  
6  
5  
4  
3  
2  
1  
ppm

11.82  
4.47  
1.05  
10.57

Jun-8-55-a-product-cl3

Pulse Sequence: s2pu1

Solvent: CDCl3

Ambient temperature

File: Jun-8-55-a-product-cl3

INOVA-500 "cosy"

Pulse 53.1 degrees

Acq. time 1.199 sec

Width 25000.0 Hz

2163 repetitions

OBSERVE C13, 100.5180384 MHz

DECOUPLE H1, 399.7552472 MHz

Power 37 dB

on during acquisition

off during delay

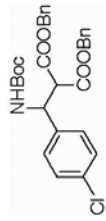
GARP-1 modulated

DATA PROCESSING

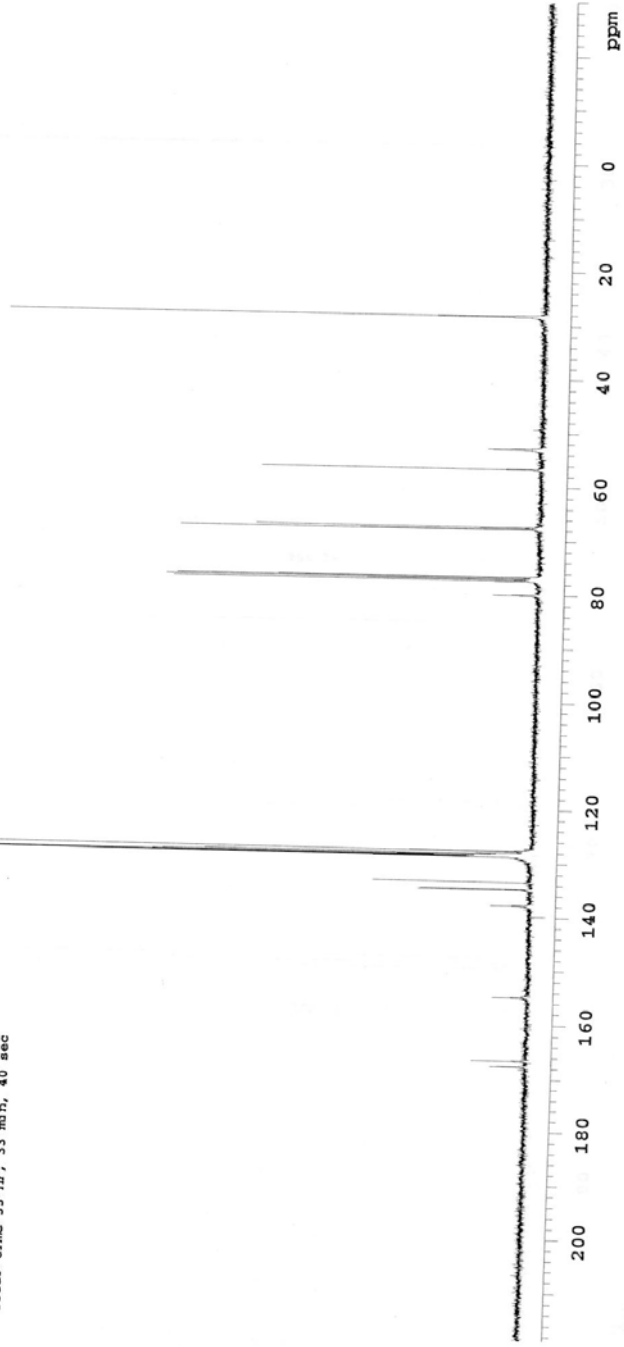
Line broadening 1.0 Hz

Ft size 65536

Total time 33 hr, 33 min, 40 sec



6Fb





jun-8-50-a-product

Pulse Sequence: s2pul

Solvent: CDCl3

Ambient temperature

INOVA-400 "fid"

Pulse 46.1 degrees

Acq. time 1.638 sec

Width 5000.0 Hz

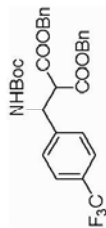
16 repetitions

OBSERVE H1, 399.7532483 MHz

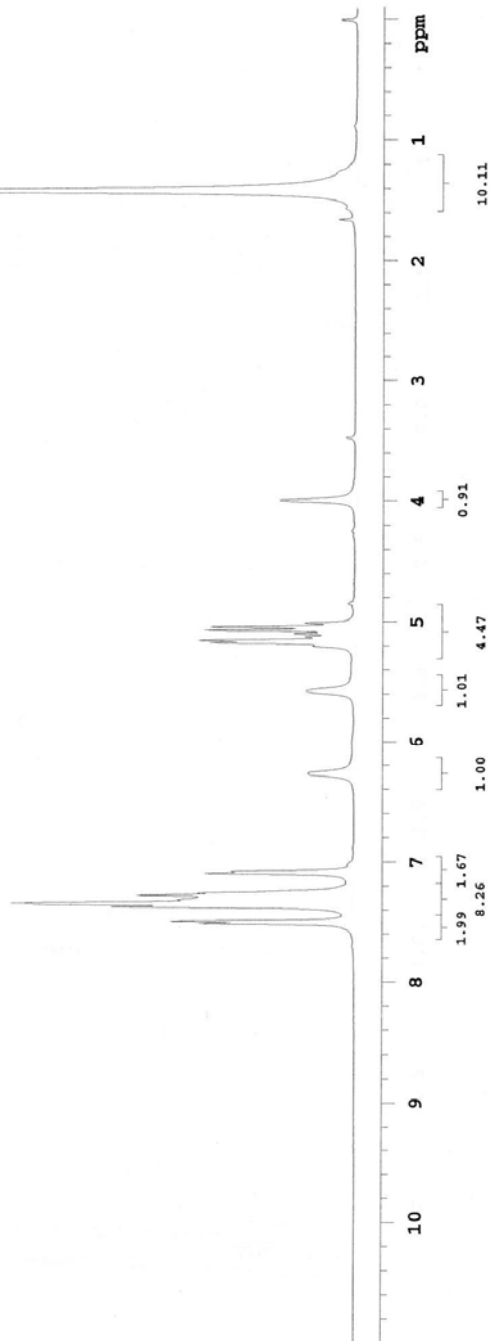
DATA PROCESSING

FT size 16384

Total time 0 min, 26 sec



6Gb





Jun-8-73-a-product

Pulse Sequence: s2pul

Solvent: CCl<sub>4</sub>

Ambient temperature

INOVA-400 "fid"

Pulse 46.1 degrees

Acq. time 1.638 sec

Width 5000.0 Hz

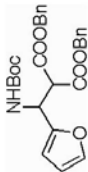
16 repetitions

OBSERVE H1, 399.7532471 MHz

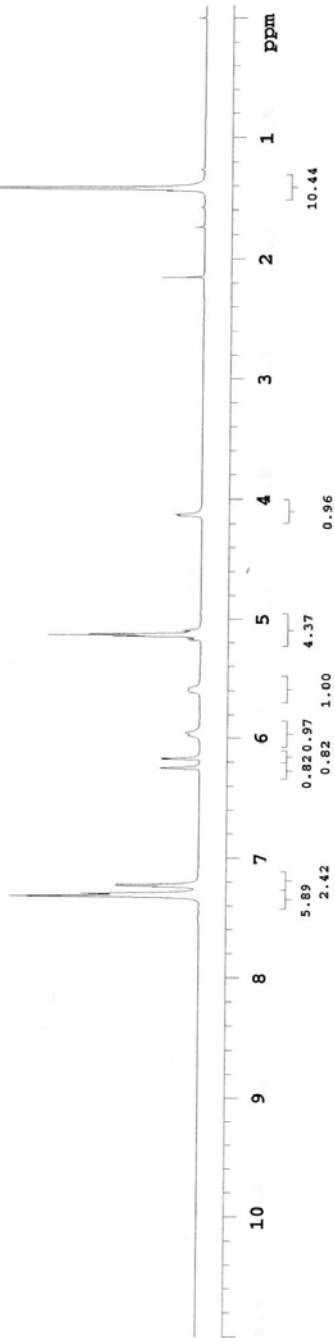
DATA PROCESSING

FT size 16384

Total time 0 min, 26 sec



6Hb



OBSERVE

Pulse Sequence: s2pul

Solvent: CDCl3

Ambient temperature

File: jun-8-73-a-product-Carbon

INOVA-500 "gemble"

Pulse 53.1 degrees

Acq. time 1.199 sec

Width 25000.0 Hz

2272 repetitions

OBSERVE C13, 100.5180435 MHz

DECOUPLE H1, 399.7552490 MHz

Power 37 dB

on during acquisition

off during delay

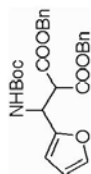
GARP-1 modulated

DATA PROCESSING

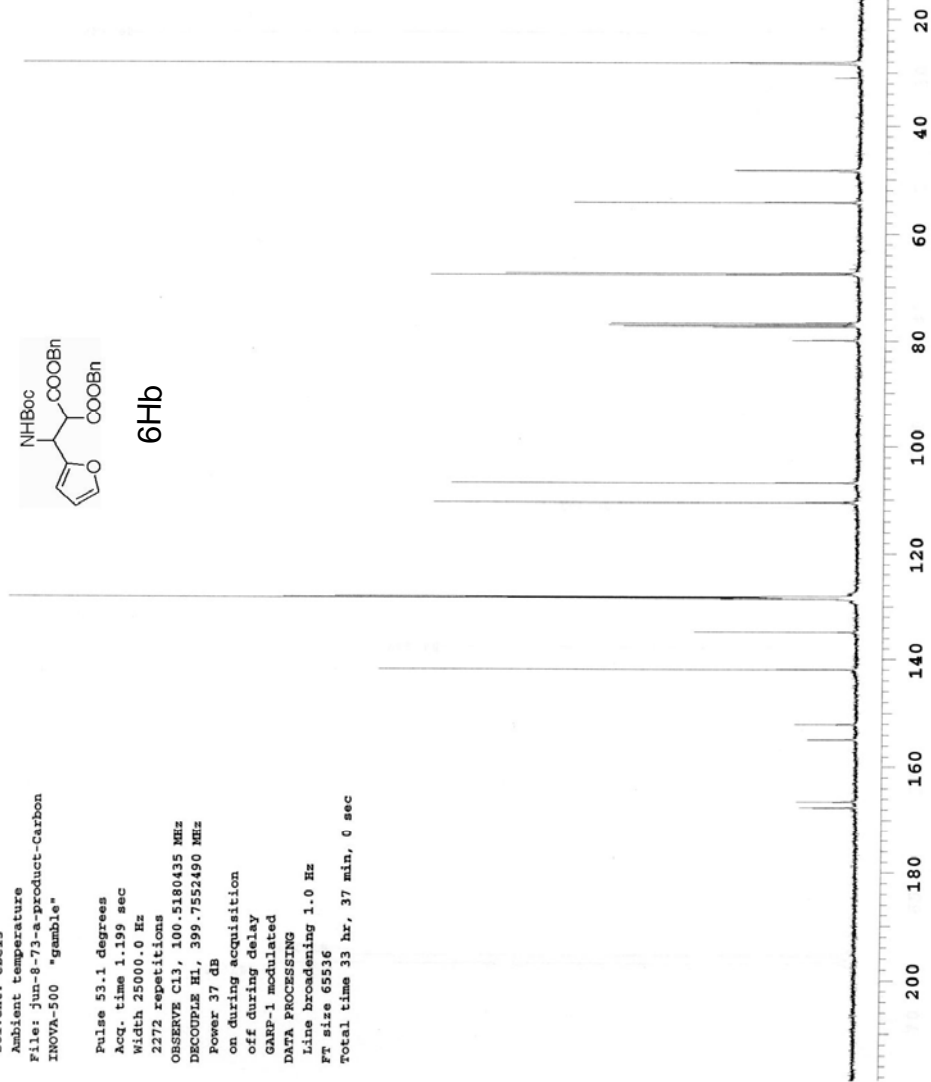
Line broadening 1.0 Hz

Ft size 65536

Total time 33 hr, 37 min, 0 sec



6Hb



Jun-8-62-a-product

Pulse Sequence: s2pul

Solvent: CDCl3

Ambient temperature

File: Jun-8-62-a-product

INOVA-500 "gamble"

Pulse 46.1 degrees

Acc. time 1.638 sec

Width 5000.0 Hz

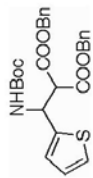
16 repetitions

OBSERVE HL, 399.7522349 MHz

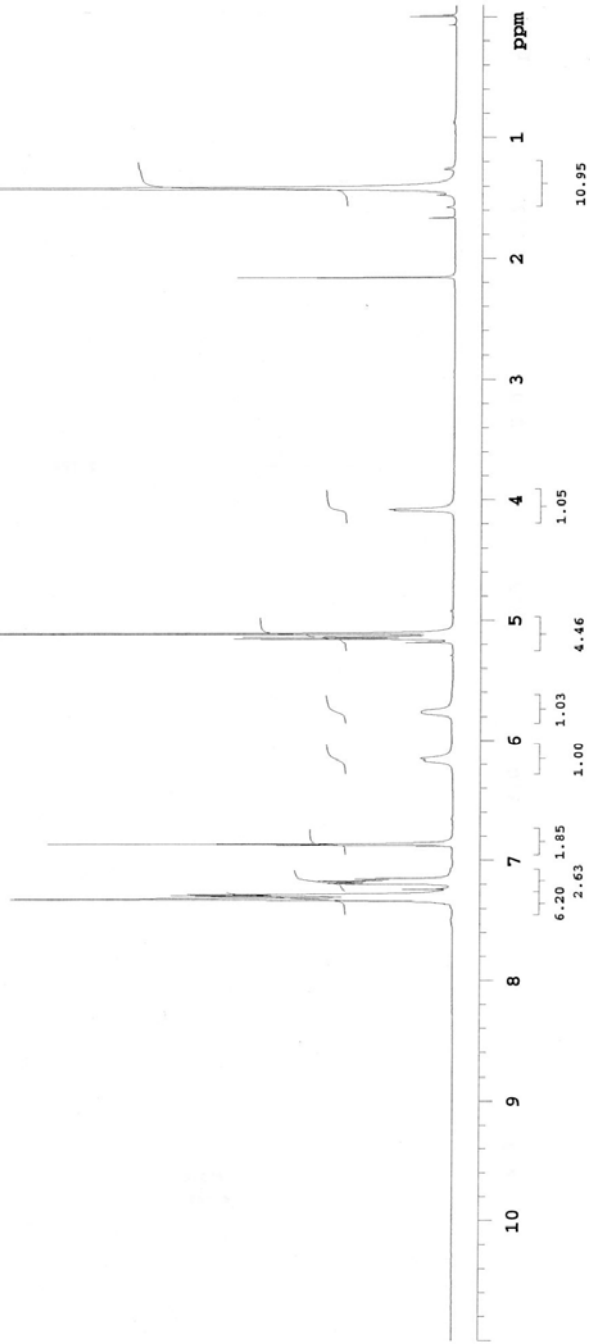
DATA PROCESSING

FT size 16384

Total time 0 min, 26 sec



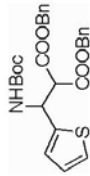
61b



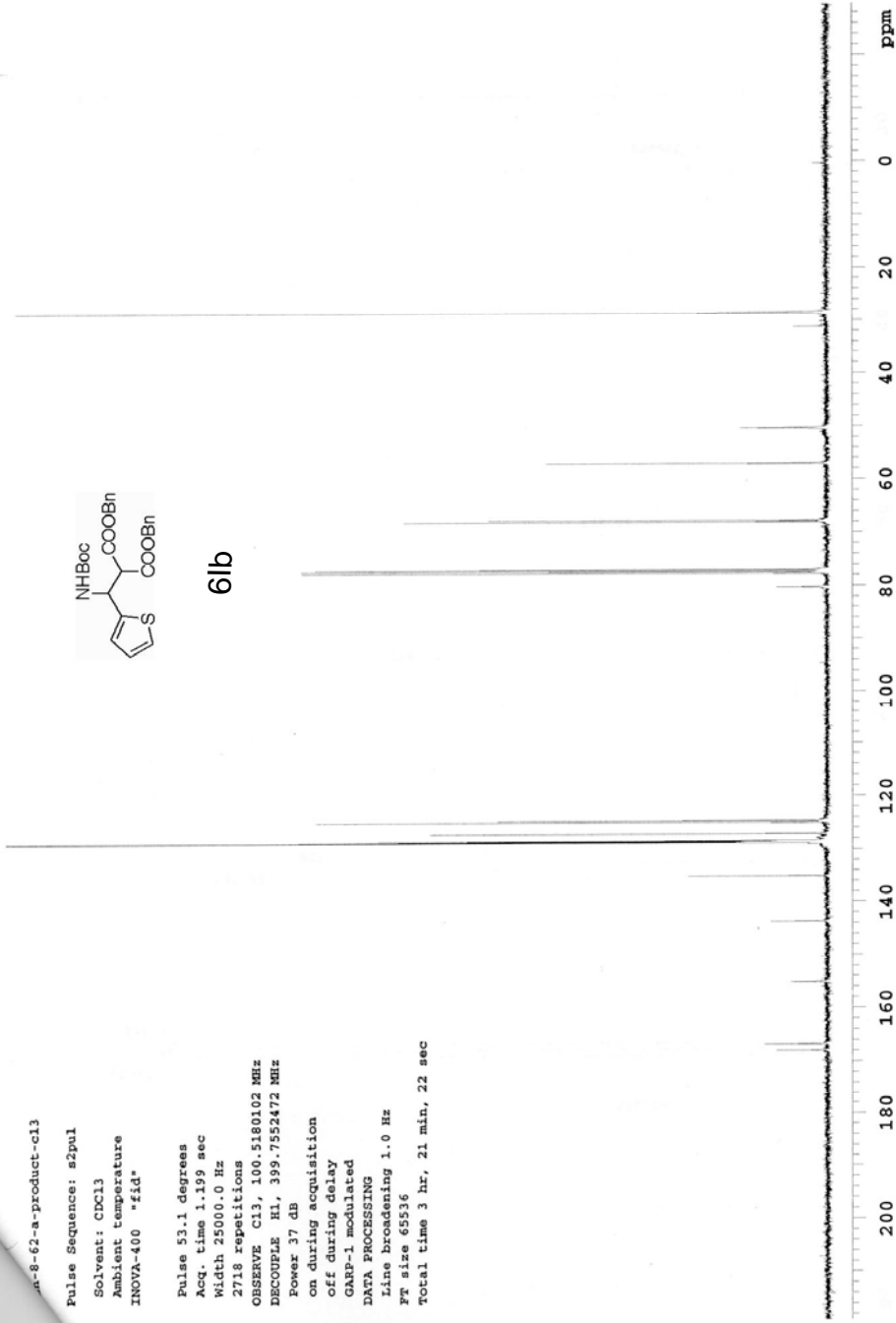
n-8-62-a-product-cl3

Pulse Sequence: s2pul  
Solvent: CDCl3  
Ambient temperature  
INNOVA-400 \*fid\*

Pulse 53.1 degrees  
Acq. time 1.199 sec  
Width 25000.0 Hz  
2718 repetitions  
OBSERVE C13, 100.5180102 MHz  
DECOUPLE H1, 399.7552472 MHz  
Power 37 dB  
on during acquisition  
off during delay  
GAMP-1 modulated  
DATA PROCESSING  
Line broadening 1.0 Hz  
Ft size 65536  
Total time 3 hr, 21 min, 22 sec



61b



Jun-8-78-a-product

Pulse Sequence: s2pul

Solvent: CDCl3

Ambient temperature

File: Jun-8-78-a-product

INOVA-500 "gamble"

Pulse 46.1 degrees

Acq. time 1.638 sec

Width 5000.0 Hz

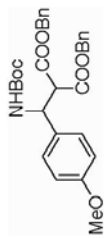
16 repetitions

OBSERVE HL, 399.7532349 MHz

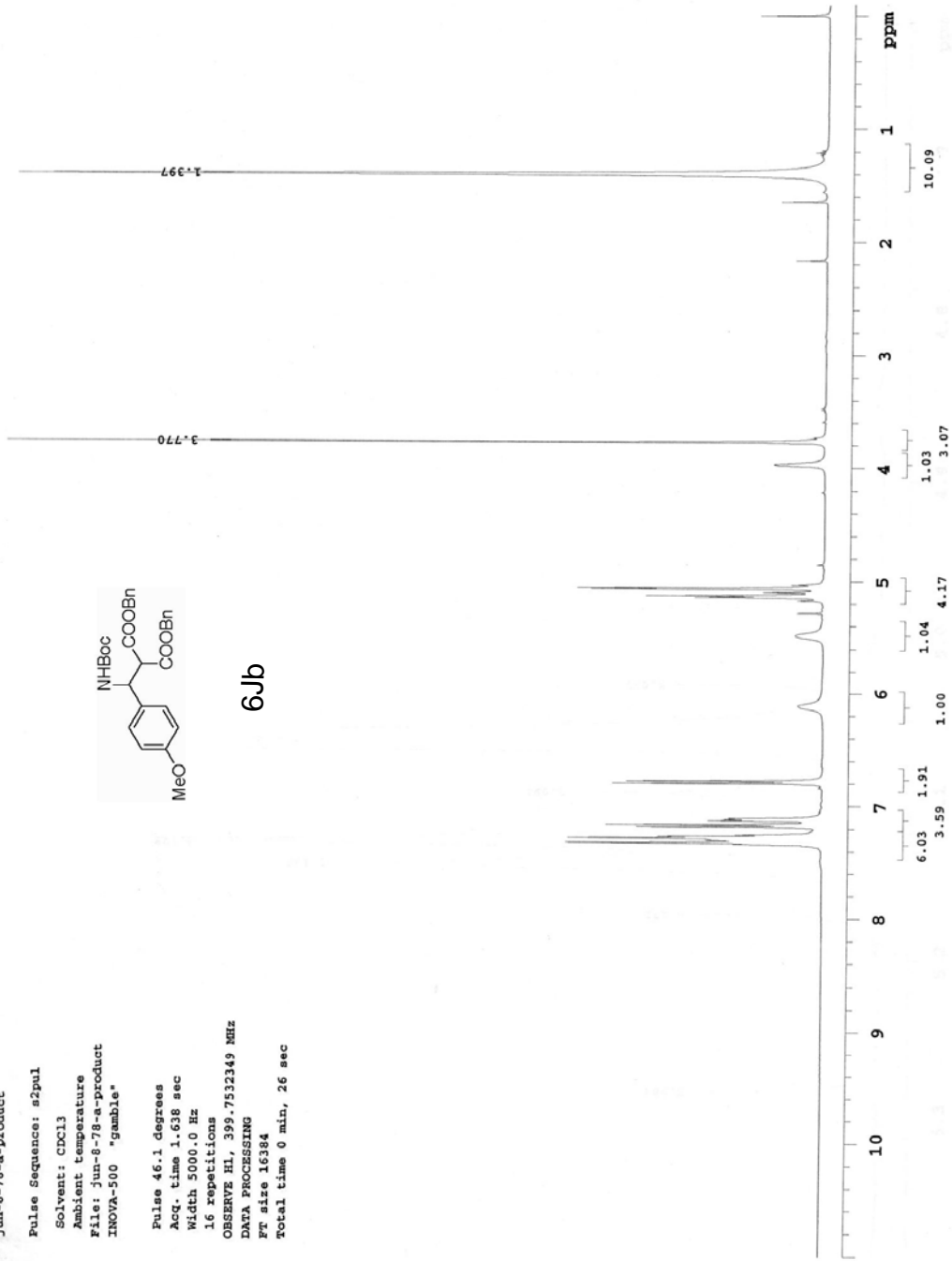
DATA PROCESSING

FT size 16384

Total time 0 min, 26 sec



6Jb



Jun-8-78-a-product-cl3

Pulse Sequence: s2pul

Solvent: CDCl3

Ambient temperature

File: Jun-8-78-a-product-cl3

INOVA-500 "gamble"

Pulse 53.1 degrees

Acq. time 1.199 sec

Width 25000.0 Hz

2534 repetitions

OBSERVE c13, 100.5180359 MHz

DECOUPLE HL, 399.7552490 MHz

Power 37 dB

on during acquisition

off during delay

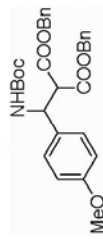
GARP-1 modulated

DATA PROCESSING

Line broadening 1.0 Hz

FT size 65536

Total time 33 hr, 37 min, 0 sec



6Jb





Jun-8-98-a-product

Pulse Sequence: s2pul

Solvent: CDCl3

Ambient temperature

File: Jun-8-98-a-product

INOVA-500 "gumbl.e"

Pulse 46.1 degrees

Acq. time 1.638 sec

Width 5000.0 Hz

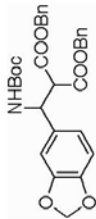
16 repetitions

OBSERVE H1, 399.7532349 MHz

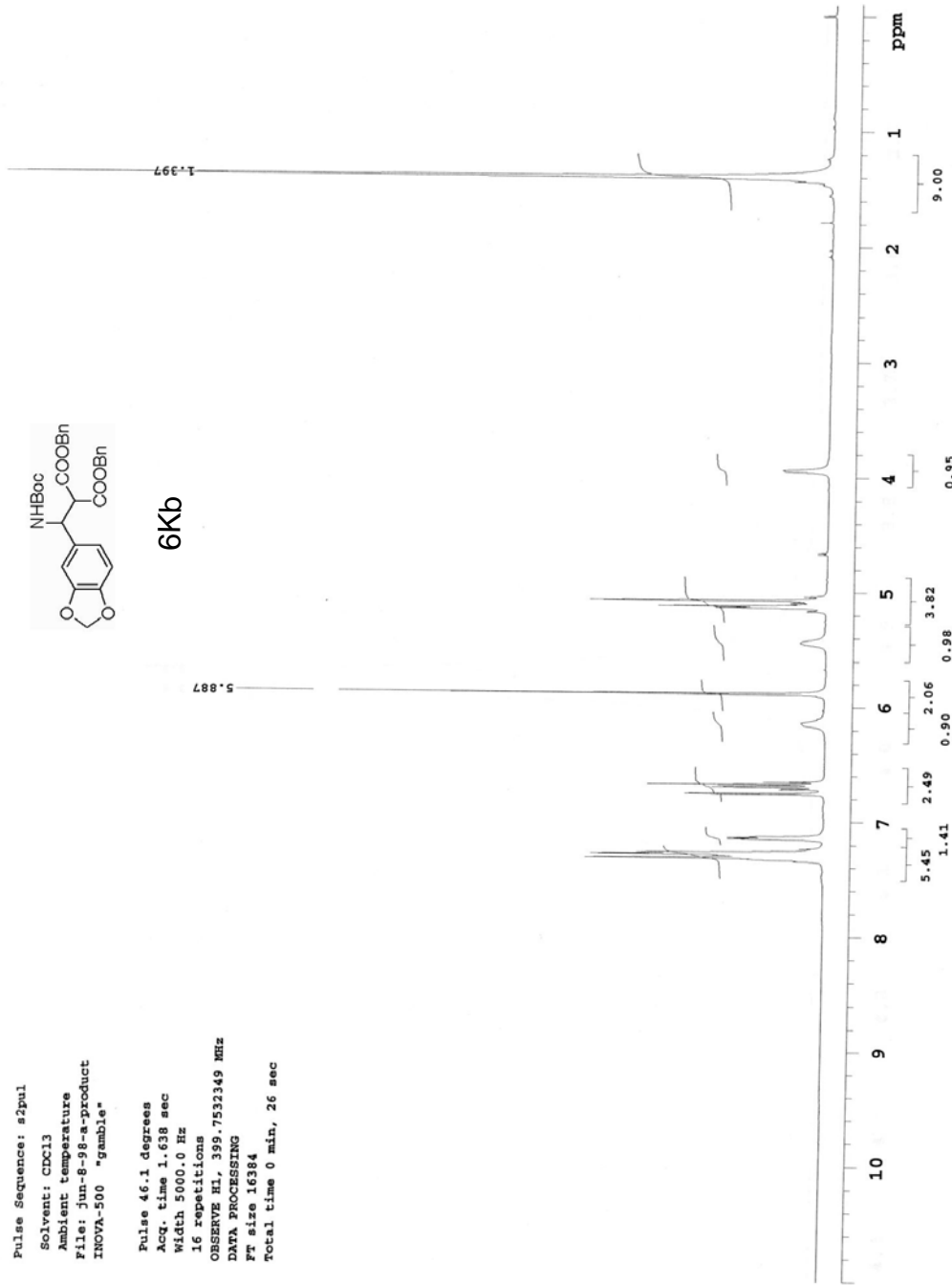
DATA PROCESSING

FT size 16384

Total time 0 min, 26 sec



6Kb

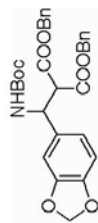


98-a-product-c13

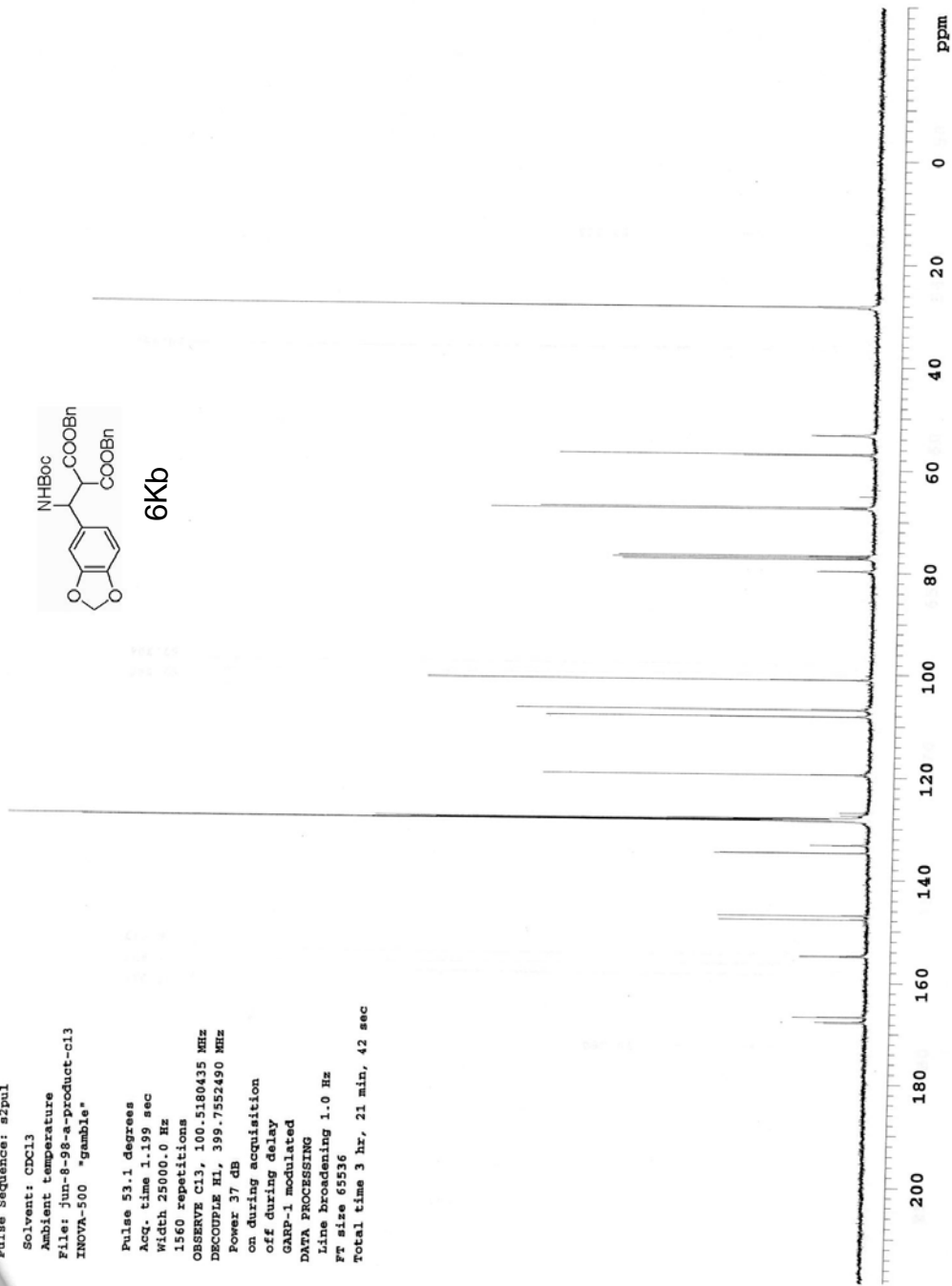
Pulse Sequence: s2pul

Solvent: CDCl3  
Ambient temperature  
File: jun-8-98-a-product-c13  
INOVA-500 "gamble"

Pulse 53.1 degrees  
Acq. time 1.199 sec  
Width 25000.0 Hz  
1560 repetitions  
OBSERVE C13, 100.5180435 MHz  
DECOUPLE H1, 399.7552490 MHz  
Power 37 dB  
on during acquisition  
off during delay  
GARP-1 modulated  
DATA PROCESSING  
Line broadening 1.0 Hz  
Ft size 65536  
Total time 3 hr, 21 min, 42 sec



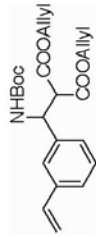
6Kb



SERVE

Pulse Sequence: s2pul  
Solvent: CDCl3  
Ambient temperature  
File: jun-8-102-a-cl3  
INOVA-500 \*gamble\*

Pulse 53.1 degrees  
Acq. time 1.199 sec  
Width 25000.0 Hz  
1888 repetitions  
OBSERVE C13, 100.5180130 MHz  
DECOUPLE H1, 399.7552490 MHz  
Power 37 dB  
on during acquisition  
off during delay  
GARP-1 modulated  
DATA PROCESSING  
Line broadening 1.0 Hz  
Ft size 65536  
Total time 33 hr, 37 min, 0 sec



6LC



jun-8-102-a-product

Pulse Sequence: s2pul

Solvent: CDCl3

Ambient temperature

File: jun-8-102-a-product

INOVA-500 "gamble"

Pulse 46.1 degrees

Acq. time 1.638 sec

Width 5000.0 Hz

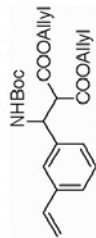
16 repetitions

OBSERVE H1, 399.7532349 MHz

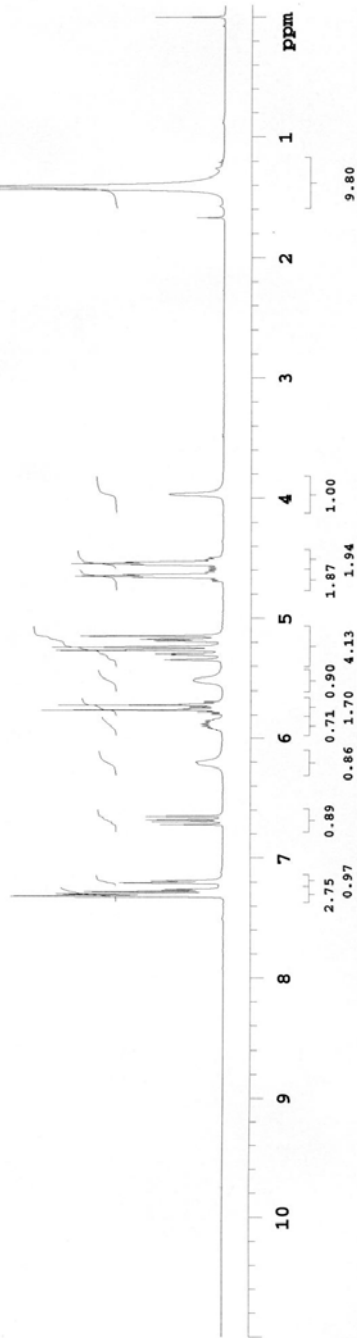
DATA PROCESSING

FT size 16384

Total time 0 min, 26 sec



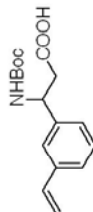
6LC



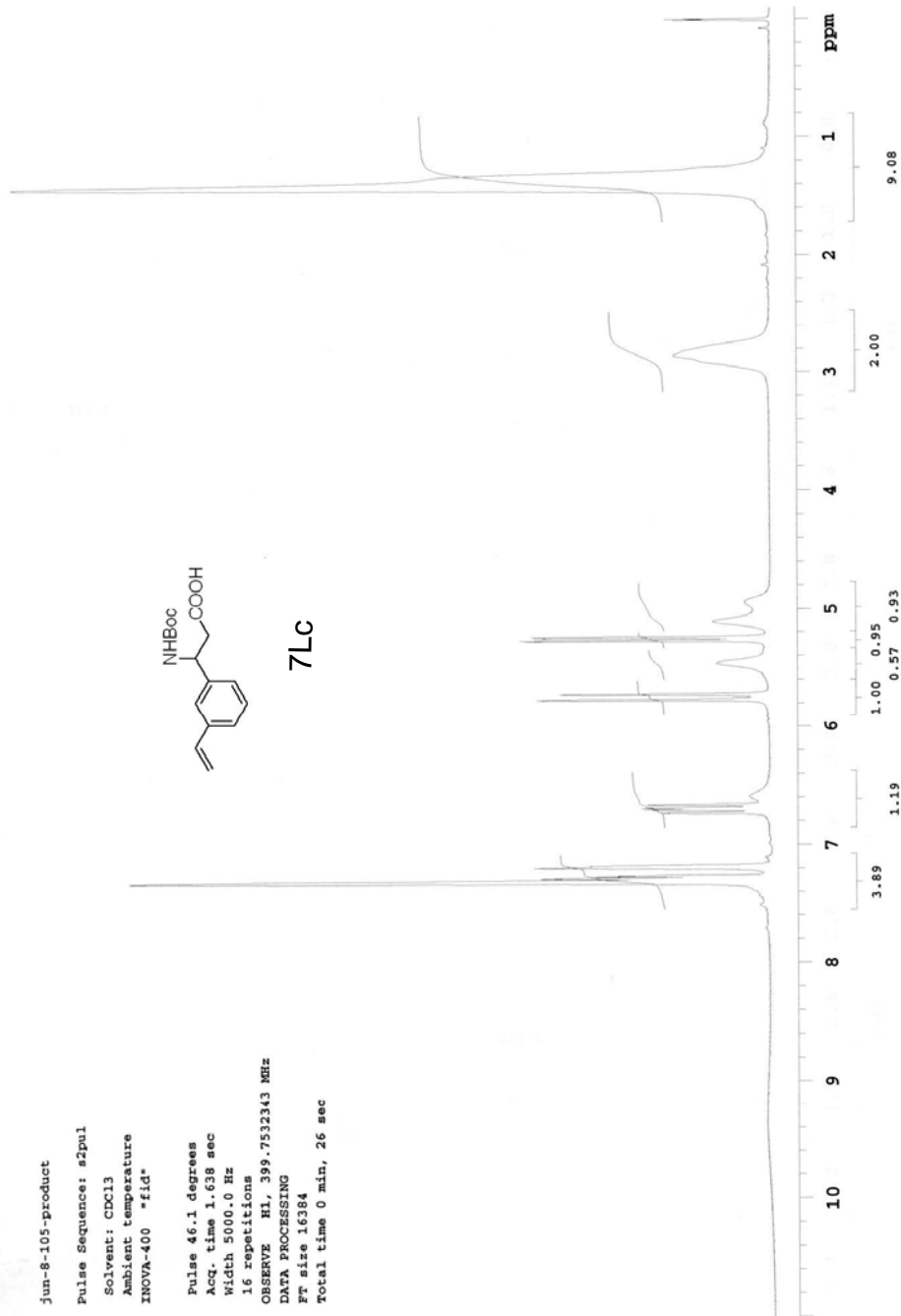
Jun-8-105-product

Pulse Sequence: s2pul  
Solvent: CDCl3  
Ambient temperature  
INOVA-400 "fid"

Pulse 46.1 degrees  
Acq. time 1.638 sec  
Width 5000.0 Hz  
16 repetitions  
OBSERVE H1, 399.7532343 MHz  
DATA PROCESSING  
Ft size 16384  
Total time 0 min, 26 sec



7LC



.jun-8-105-product-CD3OD

Pulse Sequence: s2pul

Solvent: CD3OD

Ambient temperature

File: jun-8-105-product-CD3OD

INOVA-500 "gamble"

Pulse 46.1 degrees

Acq. time 1.638 sec

Width 5000.0 Hz

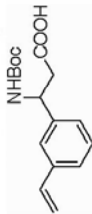
16 repetitions

OBSERVE HL, 399.7548218 MHz

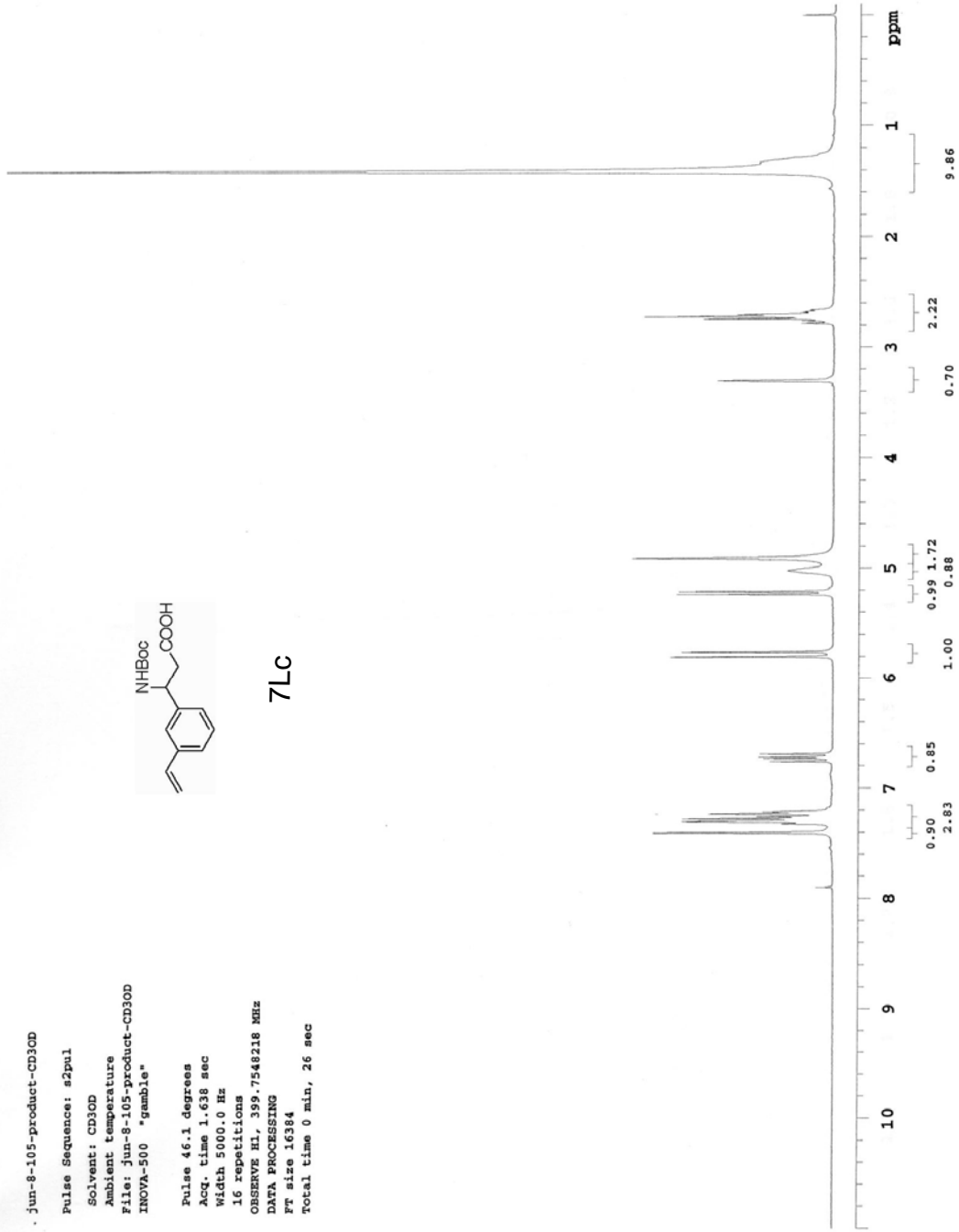
DATA PROCESSING

FT size 16384

Total time 0 min, 26 sec



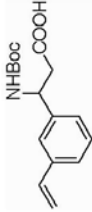
7LC



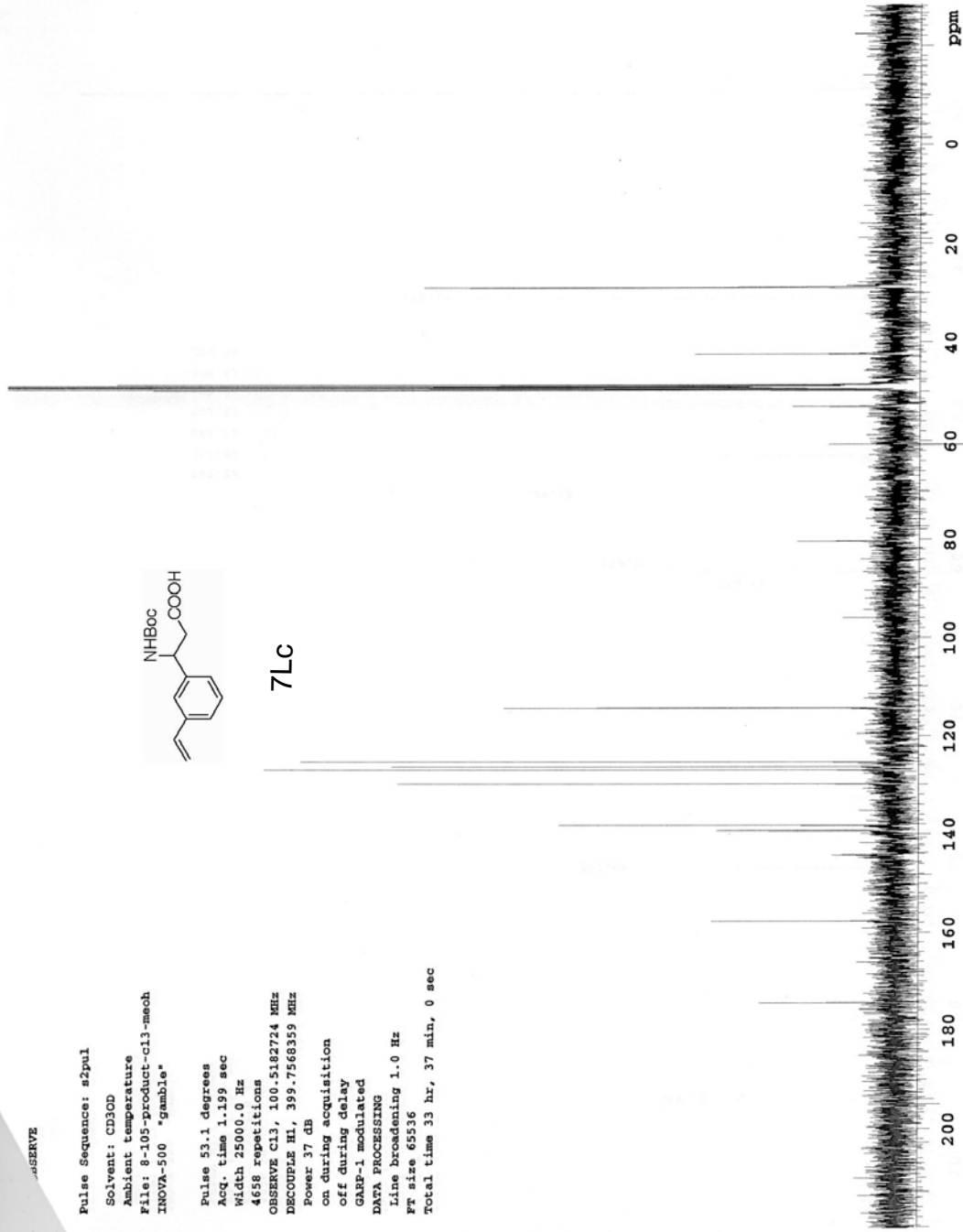
RESERVE

Pulse Sequence: s2pul  
Solvent: CD3OD  
Ambient temperature  
File: 8-105-product-cl3-mech  
INOVA-500 "gamble"

Pulse 53.1 degrees  
Acq. time 1.159 sec  
Width 25000.0 Hz  
4658 repetitions  
OBSERVE C13, 100.5182724 MHz  
DECOUPLE H1, 399.7566359 MHz  
Power 37 dB  
on during acquisition  
off during delay  
GARP-1 modulated  
DATA PROCESSING  
Line broadening 1.0 Hz  
FT size 65536  
Total time 33 hr, 37 min, 0 sec



7LC



Jun-8-86-b-product

Pulse Sequence: s2pul

Solvent: CDCl3

Ambient temperature

File: Jun-8-86-b-product

INOVA-500 "gamble"

Pulse 46.1 degrees

Acq. time 1.638 sec

Width 5000.0 Hz

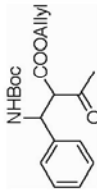
16 repetitions

OBSERVE F1, 399.753349 MHz

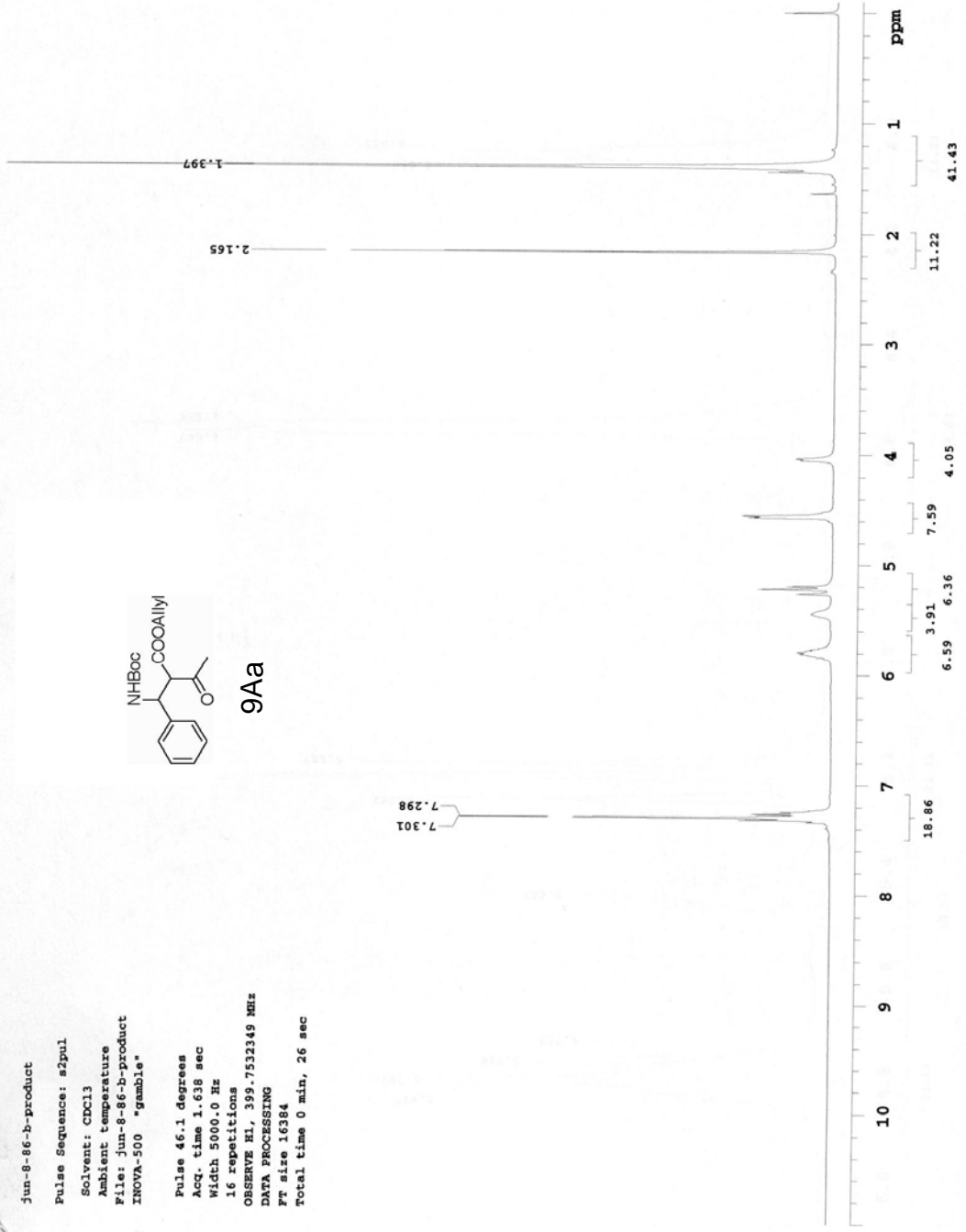
DATA PROCESSING

FT size 16384

Total time 0 min, 26 sec



9Aa





Jun-8-90-a-product

Pulse Sequence: s2pul

Solvent: CDCl3

Ambient temperature

File: jun-8-90-a-product

INOVA-500 "gamble"

Pulse 46.1 degrees

Acq. time 1.638 sec

Width 5000.0 Hz

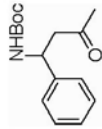
16 repetitions

OBSERVE HL, 399.7532349 MHz

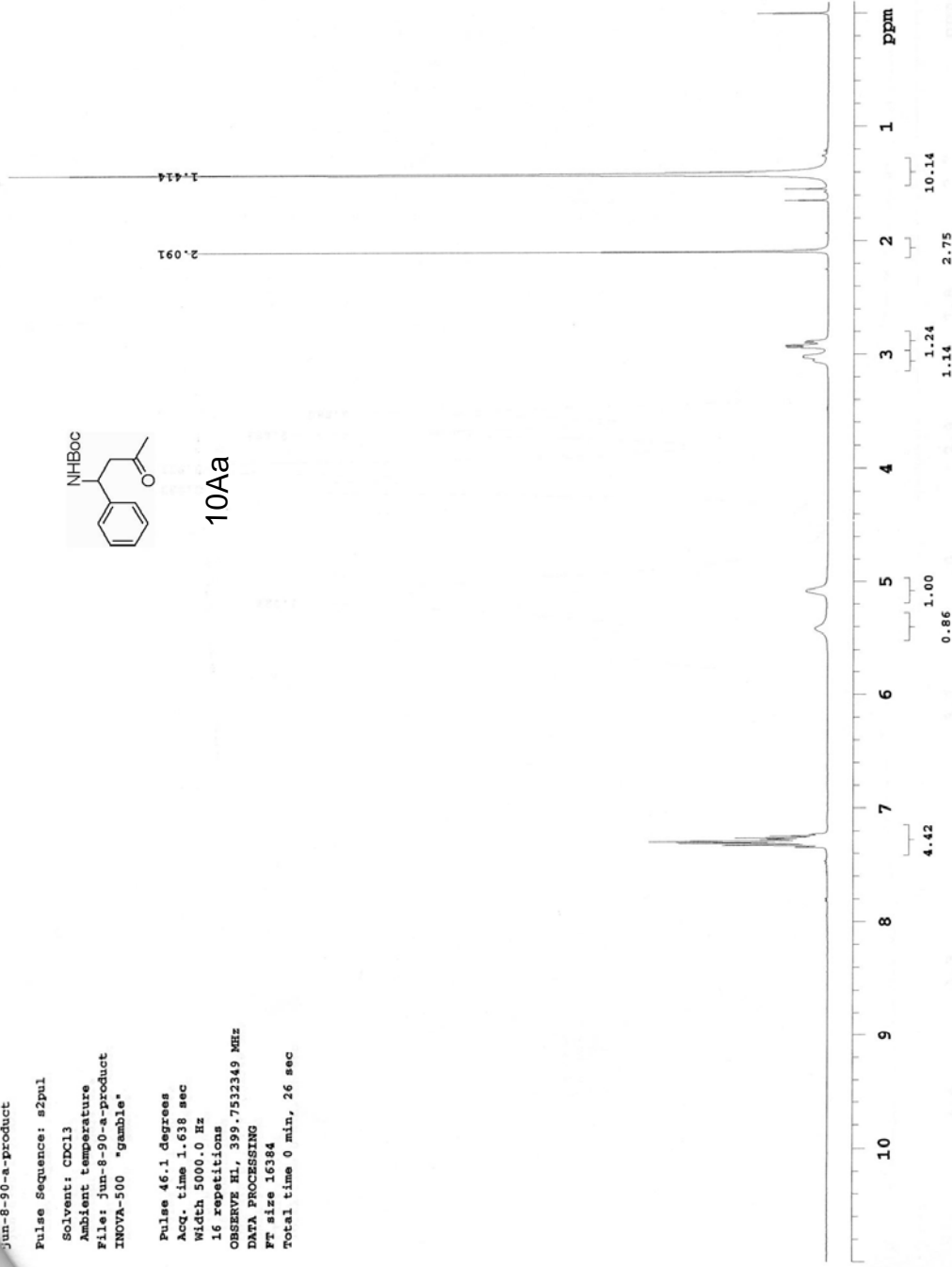
DATA PROCESSING

FT size 16384

Total time 0 min, 26 sec



10Aa



Jun-8-90-a-product-cl3

Pulse Sequence: s2pul

Solvent: CDCl3

Ambient temperature

File: Jun-8-90-a-product-cl3

INOVA-500 "gamble"

Pulse 53.1 degrees

Acq. time 1.199 sec

Width 25000.0 Hz

31654 repetitions

OBSERVE C13, 100.5180359 MHz

DECOUPLE H1, 399.7552490 MHz

Power 37 dB

on during acquisition

off during delay

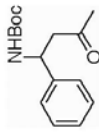
GAMP-1 modulated

DATA PROCESSING

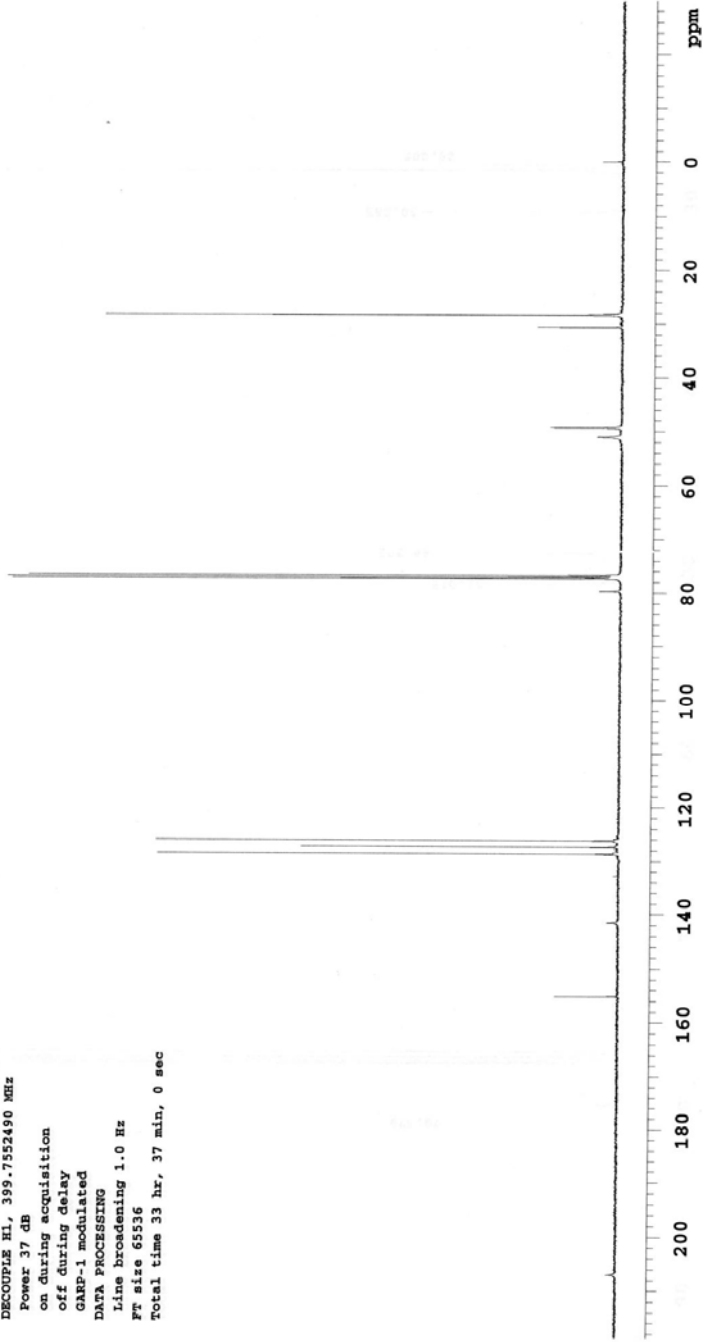
Line broadening 1.0 Hz

Ft size 65536

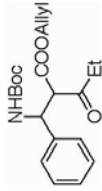
Total time 33 hr, 37 min, 0 sec



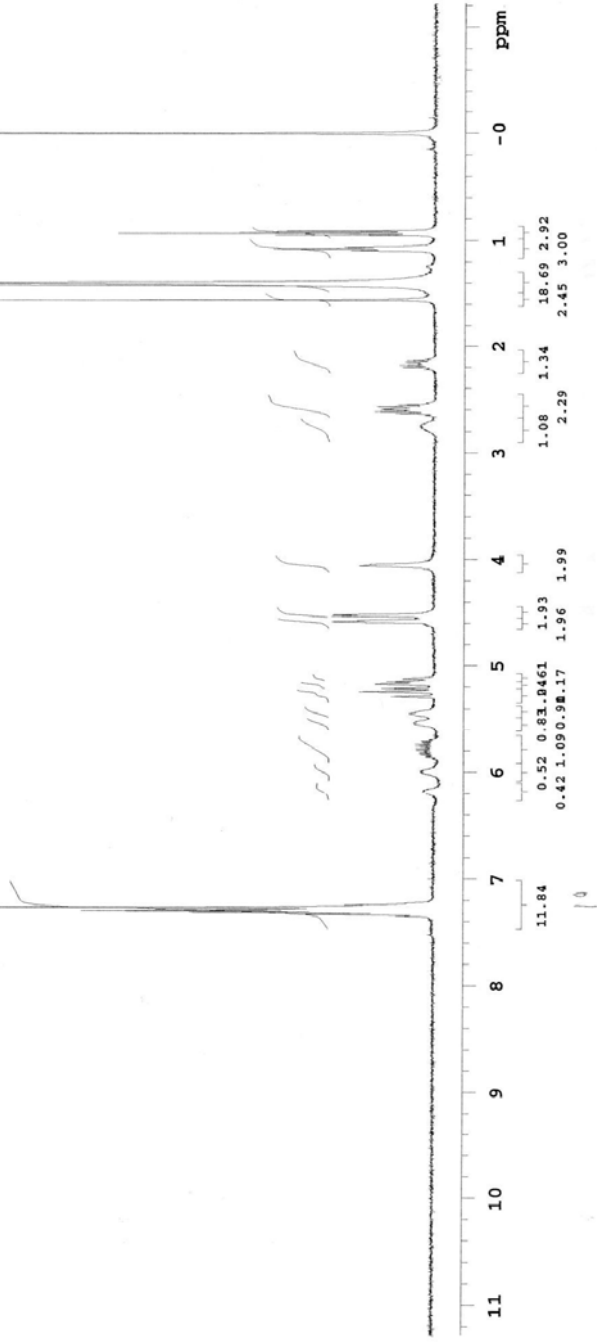
10Aa



wy-14-11-H  
 Pulse Sequence: s2pul  
 Solvent: CDCl3  
 Ambient temperature  
 File: wy-14-11-H  
 INOVA-500 "cosy"  
 Pulse 46.1 degrees  
 Acq. time 1.638 sec  
 Width 5000.0 Hz  
 16 repetitions  
 OBSERVE H1, 399.7532162 MHz  
 DATA PROCESSING  
 F1 size 16384  
 Total time 0 min, 26 sec



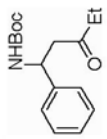
9Ab



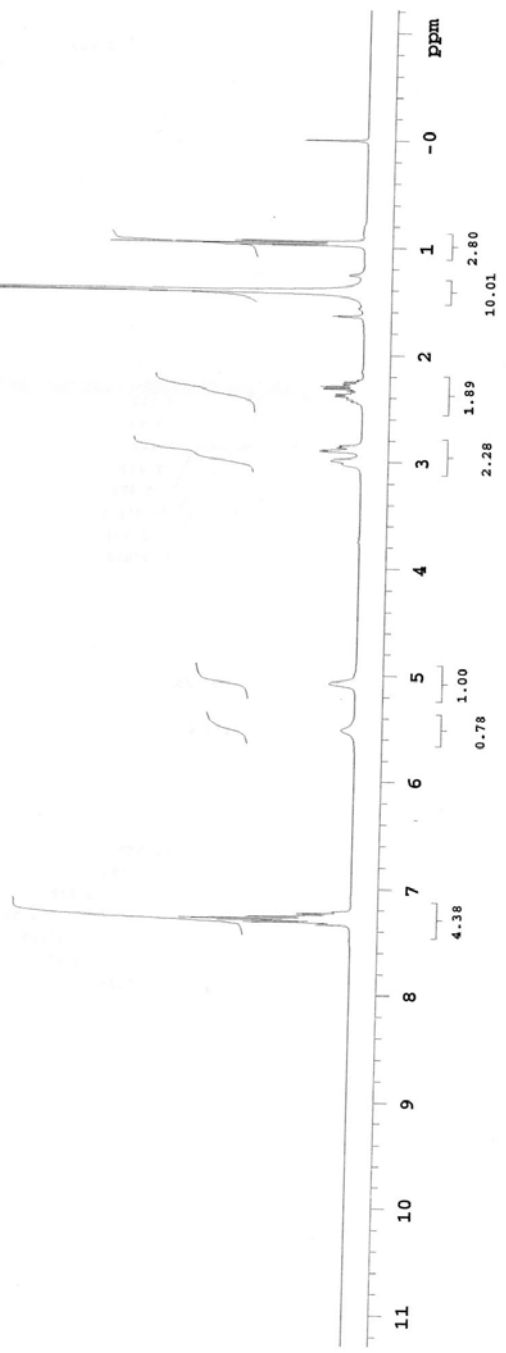
Pulse Sequence: s2pul  
Solvent: CDCl3  
Ambient temperature  
INOVA-400 "fid"

Pulse 46.1 degrees  
Acq. time 1.638 sec  
Width 5000.0 Hz  
16 repetitions

OBSERVE H1, 399.752361 MHz  
DATA PROCESSING  
Ft size 16384  
Total time 0 min, 26 sec



10Ab



103-a-product-c13

Pulse Sequence: s2pul

Solvent: CDCl3

Ambient temperature

File: Jun-8-103-a-c13

INOVA-500 "gamble"

Pulse 53.1 degrees

Acq. time 1.199 sec

Width 25000.0 Hz

15746 repetitions

OBSERVE c13, 100.5180359 MHz

DECOUPLE HL, 399.7552490 MHz

Power 37 dB

on during acquisition

off during delay

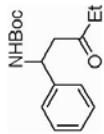
GARP-1 modulated

DATA PROCESSING

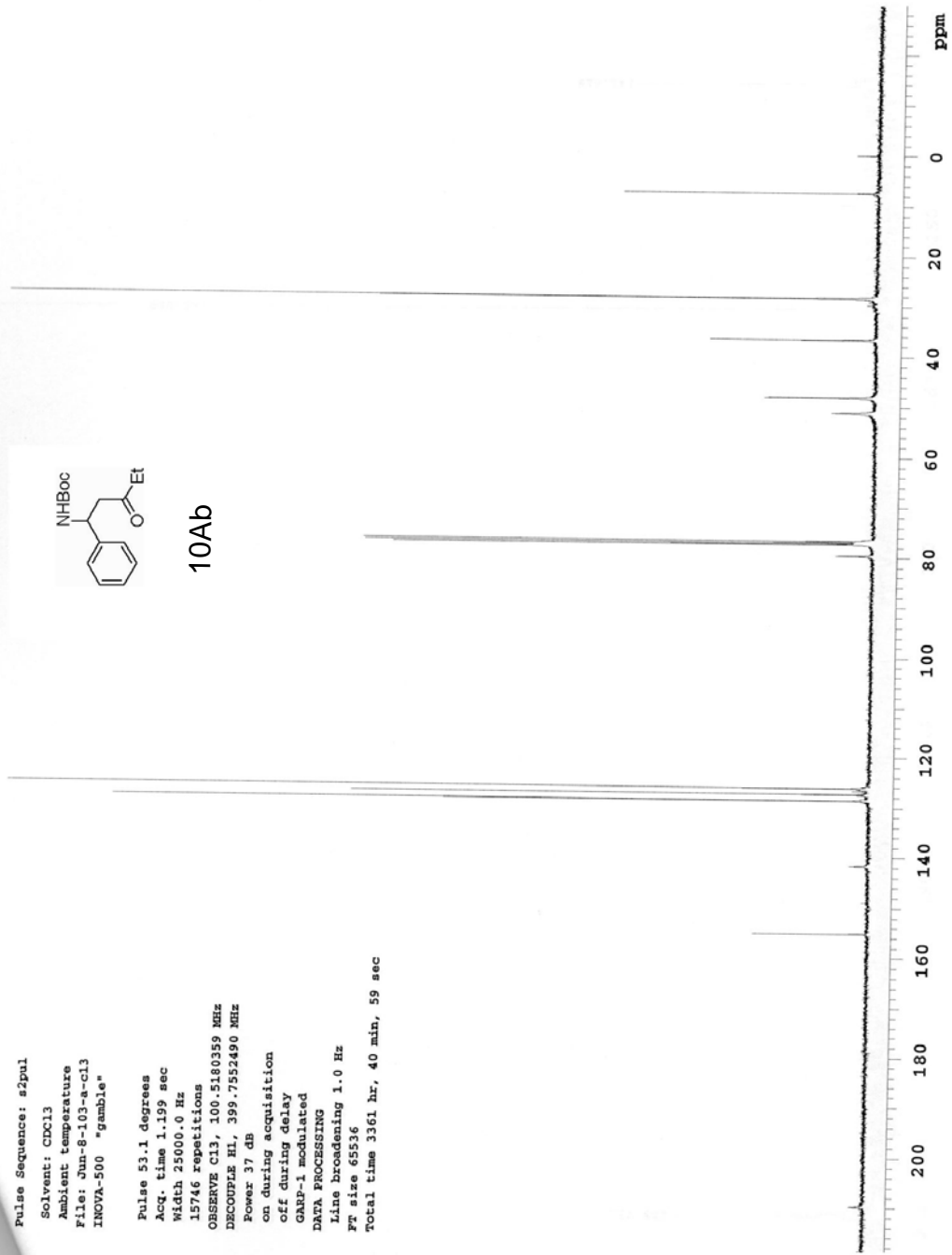
Line broadening 1.0 Hz

Ft size 65536

Total time 3361 hr, 40 min, 59 sec



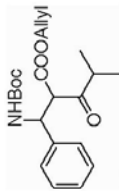
10Ab



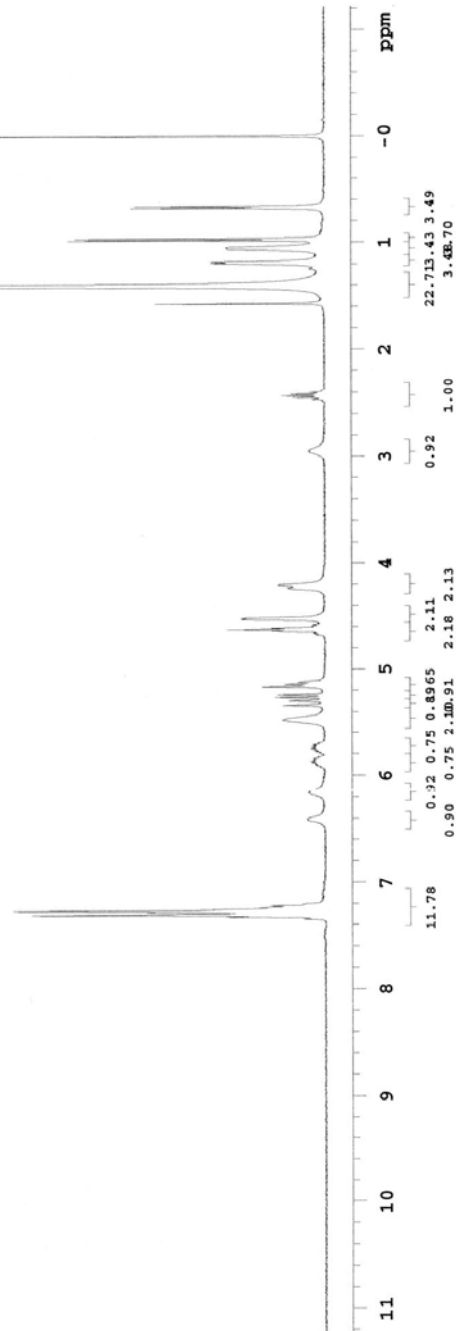
wy-14-12-H

Pulse Sequence: s2pul  
Solvent: CDCl3  
Ambient temperature  
File: wy-14-12-H  
INOVA-500 "cosy"

Pulse 46.1 degrees  
Acq. time 1.638 sec  
Width 5000.0 Hz  
16 repetitions  
OBSERVE H1, 399.7532349 MHz  
DATA PROCESSING  
Ft size 16384  
Total time 0 min, 26 sec



9AC



16-R

Pulse Sequence: s2pul

Solvent: CDCl3

Ambient temperature

INOVA-400 \*fid\*

Pulse 46.1 degrees

Acq. time 1.638 sec

Width 5000.0 Hz

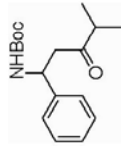
16 repetitions

OBSERVE H1, 399.7532367 MHz

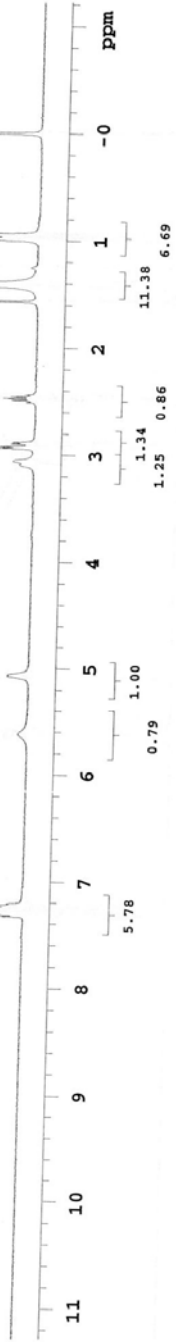
DATA PROCESSING

F2 size 16384

Total time 0 min, 26 sec



10AC



wy-14-20-C

Pulse Sequence: s2pul

Solvent: CDCl<sub>3</sub>

Ambient temperature

INOVA-400 "fig"

Pulse 53.1 degrees

Acq. time 1.199 sec

Width 25000.0 Hz

4576 repetitions

OBSERVE C13, 100.5182861 MHz

DECOUPLE H1, 399.7568222 MHz

Power 37 dB

on during acquisition

off during delay

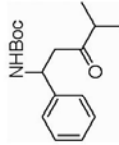
GARP-1 modulated

DATA PROCESSING

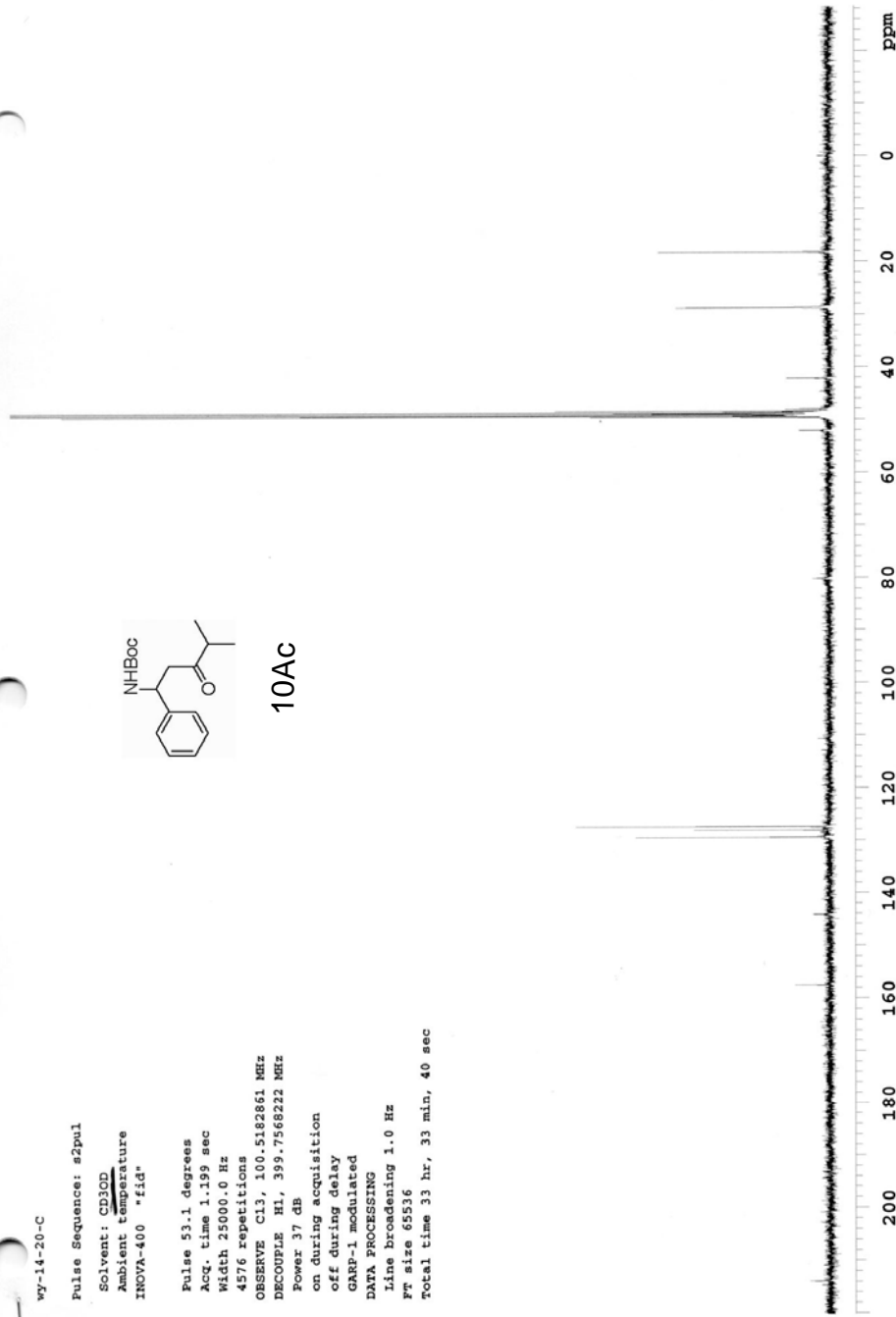
Line broadening 1.0 Hz

FT size 65536

Total time 33 hr, 33 min, 40 sec



10AC





jun-9-49-product

Pulse Sequence: s2pul

Solvent: CDCl3

Ambient temperature

File: jun-9-49-product

INOVA-500 "gamble"

Pulse 46.1 degrees

Acq. time 1.638 sec

Width 5000.0 Hz

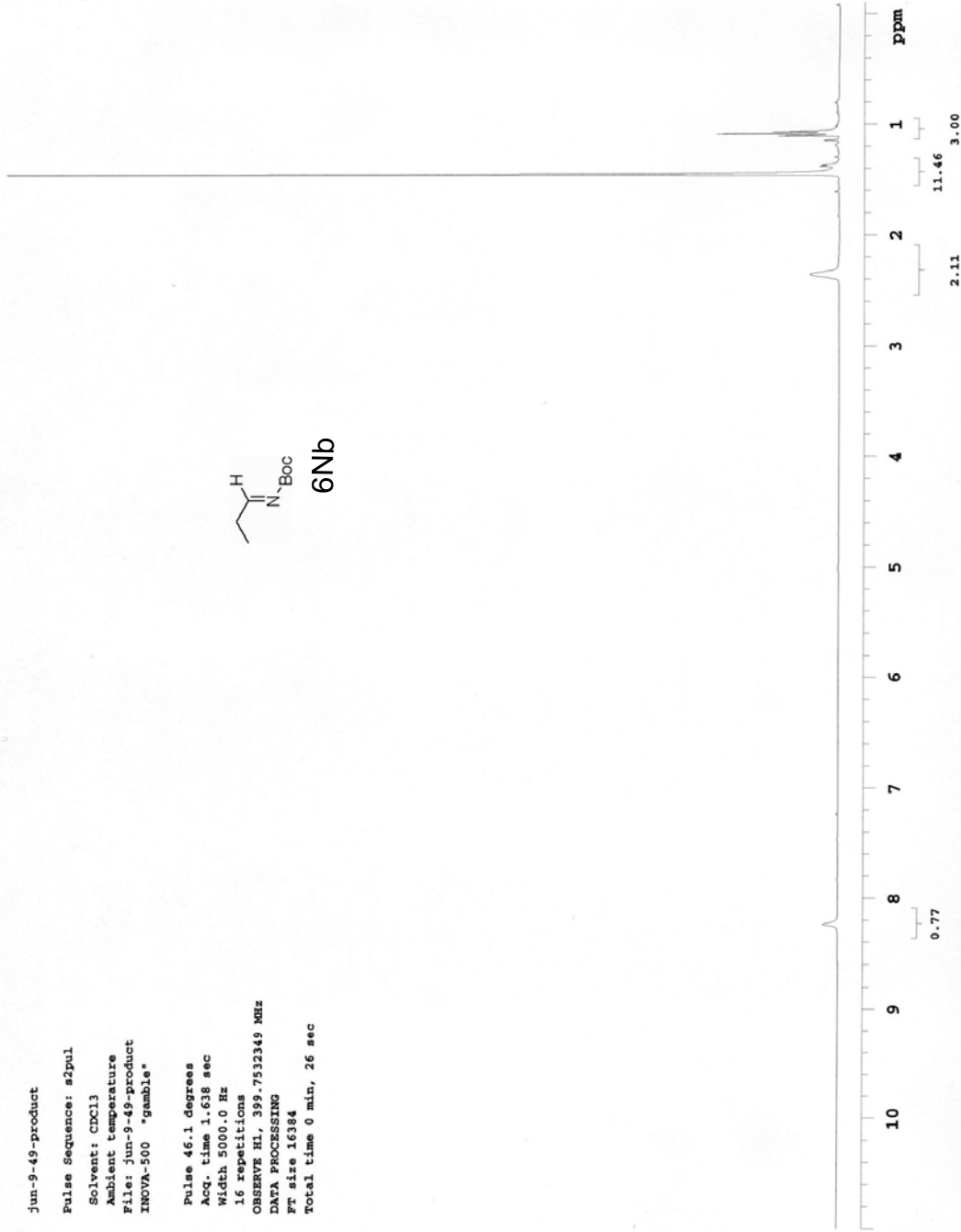
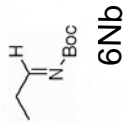
16 repetitions

OBSERVE H1, 399.7532349 MHz

DATA PROCESSING

FT size 16384

Total time 0 min, 26 sec



13C OBSERVE

Pulse Sequence: s2pul

Solvent: CDCl3

Ambient temperature

File: Jun-9-22-product-cl3

INOVA-500 "gambie"

Pulse 53.1 degrees

Acq. time 1.199 sec

Width 25000.0 Hz

954 repetitions

OBSERVE C13, 100.5180130 MHz

DECOUPLE H1, 399.7552490 MHz

Power 37 dB

on during acquisition

off during delay

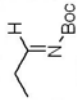
GARP-1 modulated

DATA PROCESSING

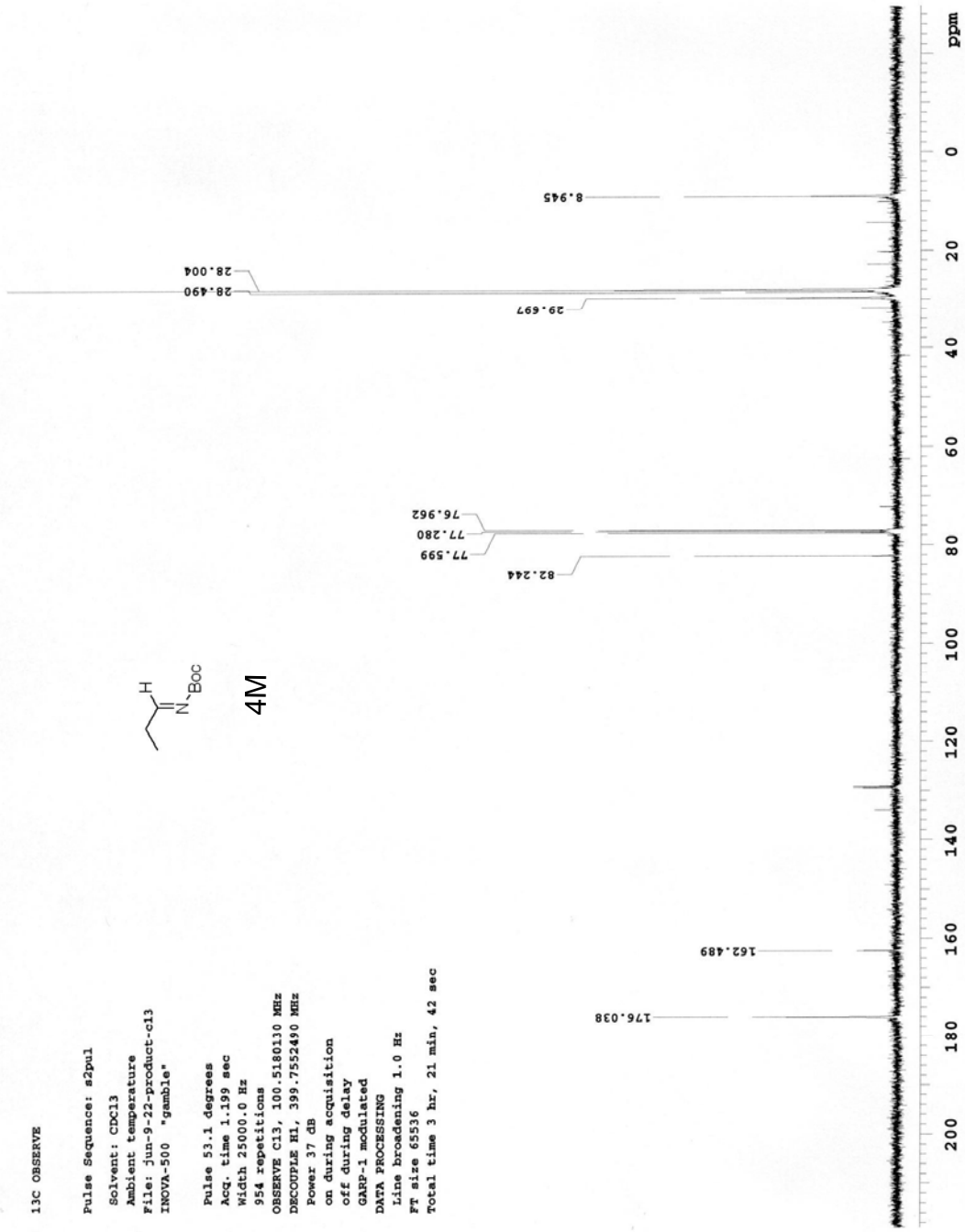
Line broadening 1.0 Hz

FT size 65536

Total time 3 hr, 21 min, 42 sec



4M



jun-9-46-product

Pulse Sequence: #2pul

Solvent: CDCl3

Ambient temperature

File: jun-9-46-product

INOVA-500 "gamble"

Pulse 46.1 degrees

Acq. time 1.638 sec

Width 5000.0 Hz

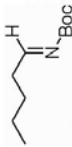
16 repetitions

OBSERVE H1, 399.7532043 MHz

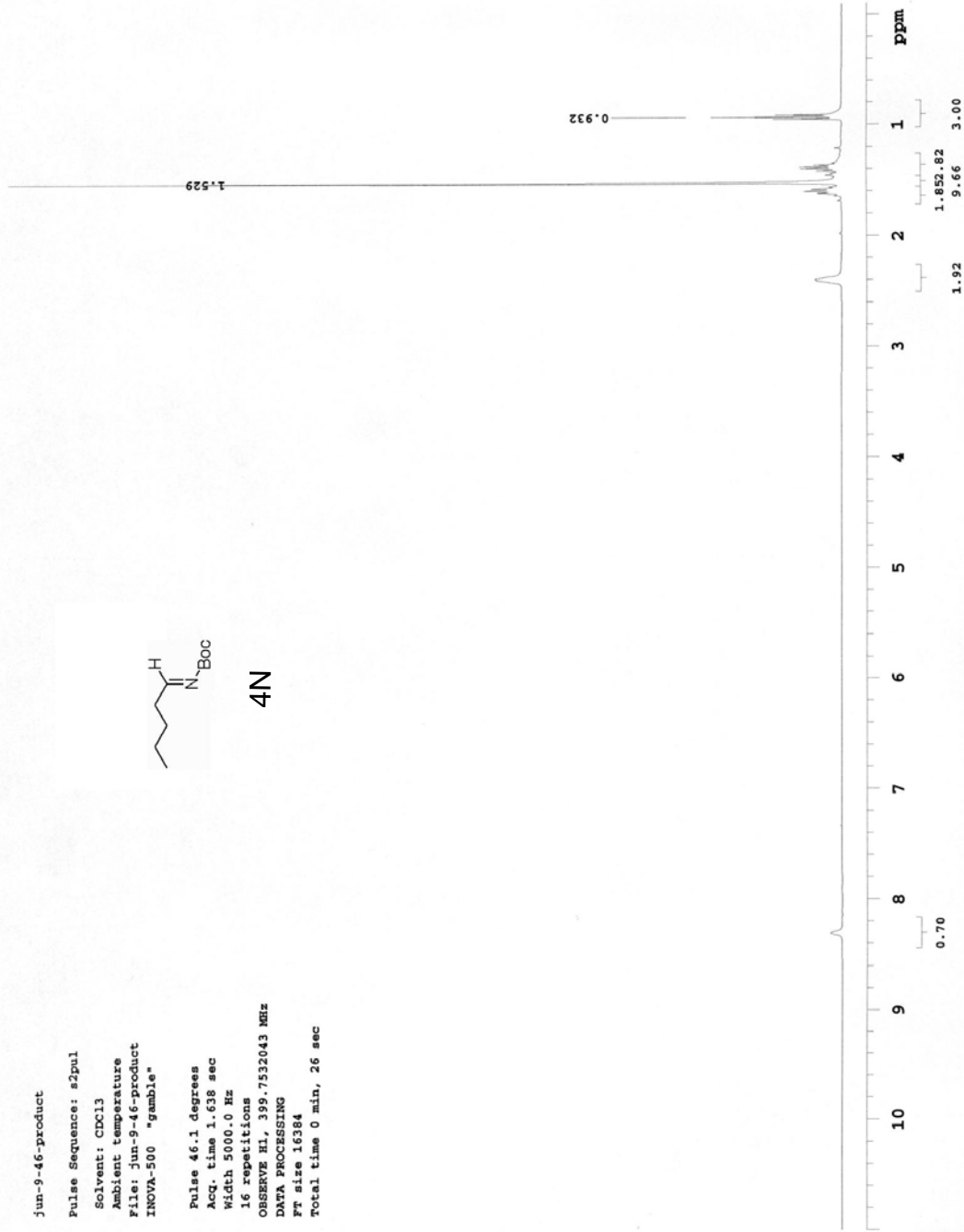
DATA PROCESSING

FT size 16384

Total time 0 min, 26 sec



4N



jun-9-46-product-c13

Pulse Sequence: s2pul

Solvent: CDCl3

Ambient temperature

INOVA-400 "fid"

Pulse 53.1 degrees

Acq. time 1.199 sec

Width 25000.0 Hz

327 repetitions

OBSERVE C13, 100.5180102 MHz

DECOUPLE H1, 399.7552472 MHz

Power 37 dB

on during acquisition

off during delay

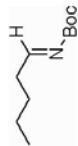
GARP-1 modulated

DATA PROCESSING

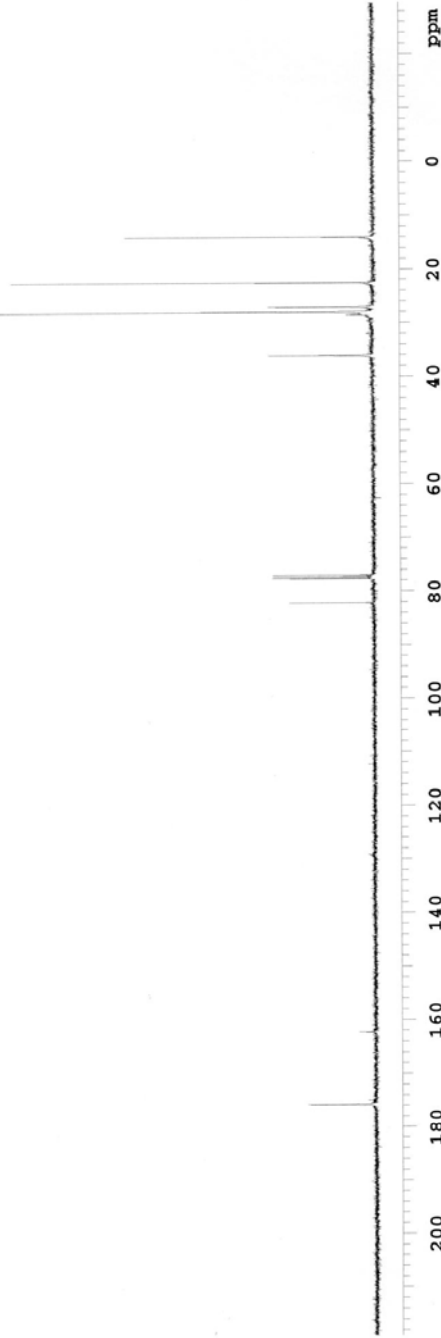
Line broadening 1.0 Hz

FT size 65536

Total time 33 hr, 33 min, 40 sec



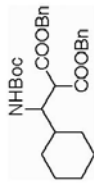
4N



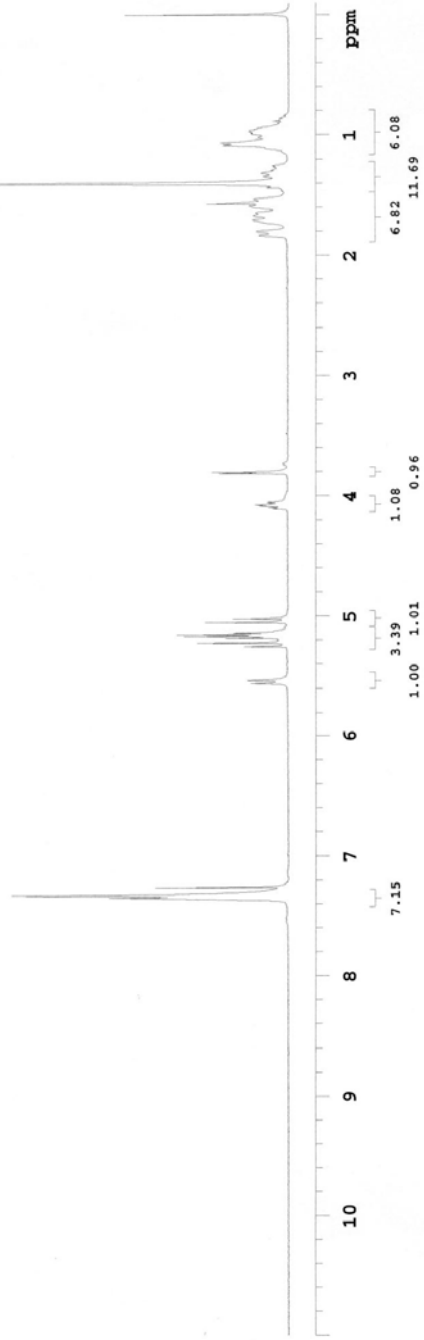
jun-9-23  
38

Pulse Sequence: s2pul  
Solvent: CDCl3  
Ambient temperature  
INOVA-400 "fid"

Pulse 46.1 degrees  
Acq. time 1.638 sec  
Width 5000.0 Hz  
16 repetitions  
OBSERVE H1, 399.7532391 MHz  
DATA PROCESSING  
Ft size 16384  
Total time 0 min, 26 sec



60b



jun-9-38-c13

Pulse Sequence: s2pul

Solvent: CDCl3

Ambient temperature

File: Jun-9-38-c13

INOVA-500 "gamble"

Pulse 53.1 degrees

Acq. time 1.199 sec

Width 25000.0 Hz

3372 repetitions

OBSERVE c13, 100.5180359 MHz

DECOUPLE H1, 399.7552490 MHz

Power 37 dB

on during acquisition

off during delay

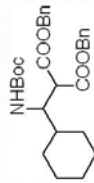
GARP-1 modulated

DATA PROCESSING

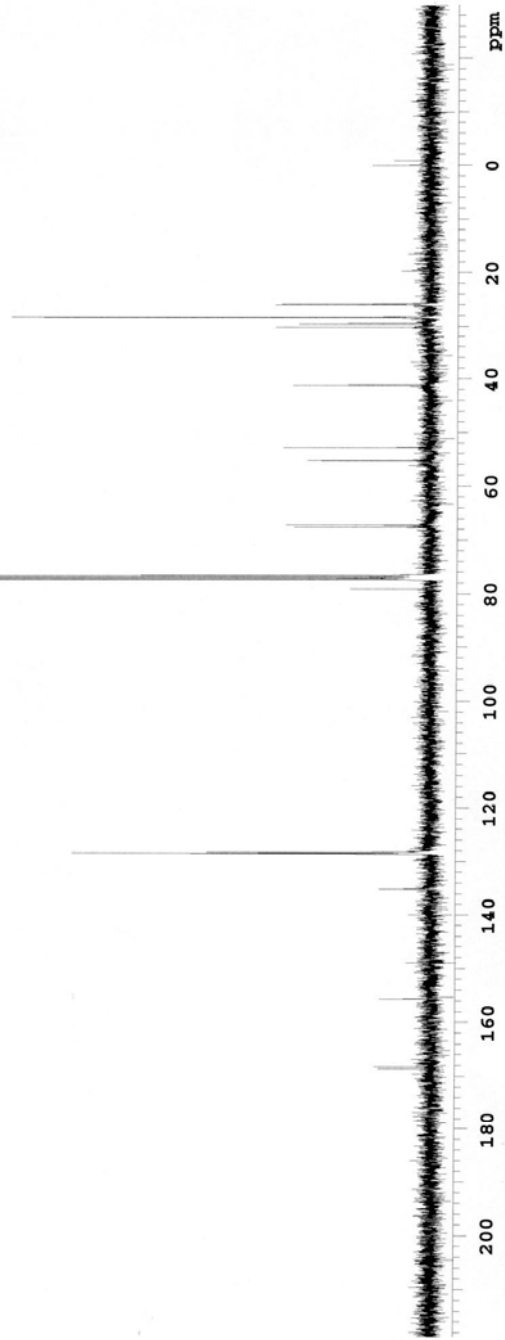
Line broadening 1.0 Hz

FT size 65536

Total time 33 hr, 37 min, 0 sec



60b



jun-8-6, product

Pulse Sequence: s2pul

Solvent: CDCl3

Ambient temperature

INOVA-400 "fid"

Pulse 46.1 degrees

Acq. time 1.638 sec

Width 5000.0 Hz

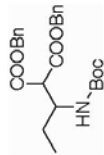
16 repetitions

OBSERVE H1, 399.7532410 MHz

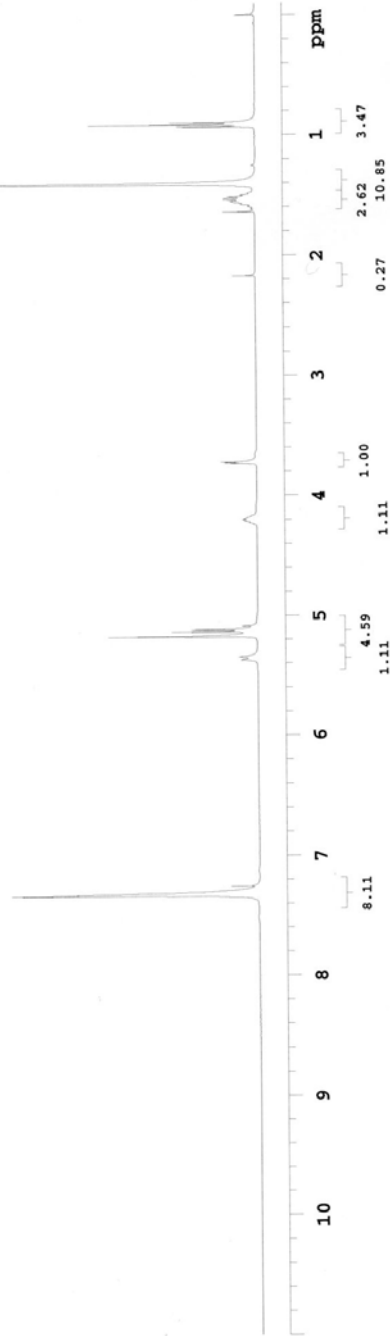
DATA PROCESSING

Ft size 16384

Total time 0 min, 26 sec



6Mb



jun-8-6\_ product-cl3

Pulse Sequence: s2pul

Solvent: CDCl3

Ambient temperature

INOVA-400 "fid"

Pulse 53.1 degrees

Acq. time 1.199 sec

Width 25000.0 Hz

615 repetitions

OBSERVE C13, 100.5180102 MHz

DECOUPLE H1, 399.7552472 MHz

Power 37 dB

on during acquisition

off during delay

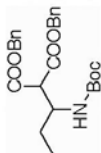
GRAP-1 modulated

DATA PROCESSING

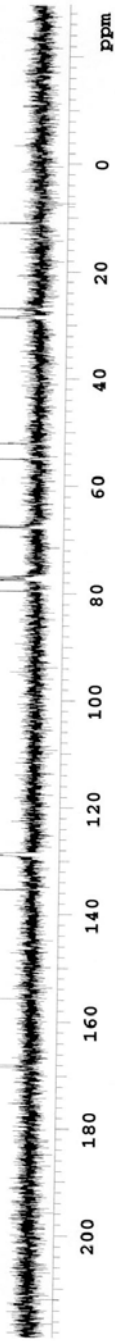
Line broadening 1.0 Hz

FT size 65536

Total time 20 min, 37 sec



6Mb



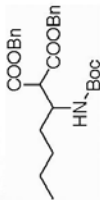


wy-14-88-H

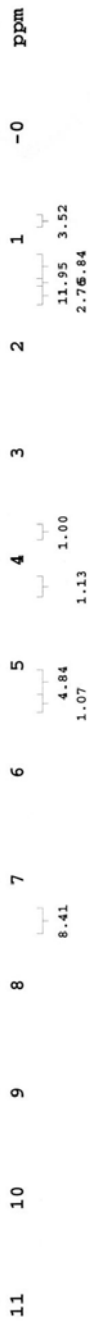
Pulse Sequence: s2pul  
Solvent: CDCl3  
Ambient temperature  
INOVA-400 "fid"

Pulse 46.1 degrees  
Acq. time 1.638 sec  
Width 5000.0 Hz  
16 repetitions

OBSERVE H1, 399.7532410 MHz  
DATA PROCESSING  
FT size 16384  
Total time 0 min, 26 sec



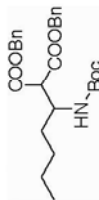
6Nb



jun-9-47

Pulse Sequence: s2pul  
Solvent: CDCl3  
Ambient temperature  
INOVA-400 "fld"

Pulse 53.1 degrees  
Acq. time 1.199 sec  
Width 25000.0 Hz  
25382 repetitions  
OBSERVE C13, 100.5180335 MHz  
DECOUPLE H1, 399.7552472 MHz  
Power 37 dB  
on during acquisition  
off during delay  
GARP-1 modulated  
DATA PROCESSING  
Line broadening 1.5 Hz  
Ft size 65536  
Total time 33 hr, 33 min, 40 sec



6Nb

