

# Synthesis of Novel $\beta$ -Lactone Inhibitors of Fatty Acid Synthase

*Robyn D. Richardson<sup>†</sup>, Gil Ma<sup>‡</sup>, Yatsandra Oyola<sup>‡</sup>, Manuel Zancanella<sup>‡</sup>, Lynn M. Knowles<sup>†</sup>, Piotr Cieplak<sup>†</sup>, Daniel Romo<sup>\*‡</sup>, and Jeffrey W. Smith<sup>\*†</sup>*

<sup>†</sup>NCI Cancer Center, The Burnham Institute for Medical Research 10901 N. Torrey Pines Rd. La Jolla, California 92037, USA; tel: 858-646-3100; fax: 858-795-5221 and

<sup>‡</sup>Department of Chemistry, Texas A & M University, P.O. Box 30012, College Station, Texas 77842, USA; tel: 979-845-9571; fax: 979-862-4880

\*To whom correspondence should be addressed. E-mail: [jsmith@burnham.org](mailto:jsmith@burnham.org),

[romo@tamu.edu](mailto:romo@tamu.edu)

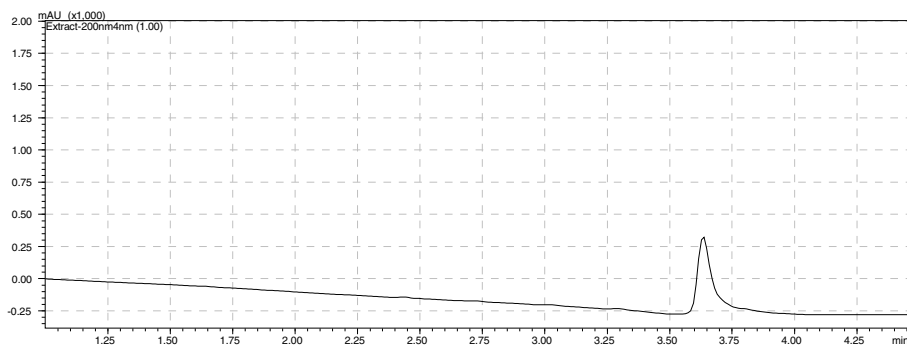
## Supporting Information

### Contents

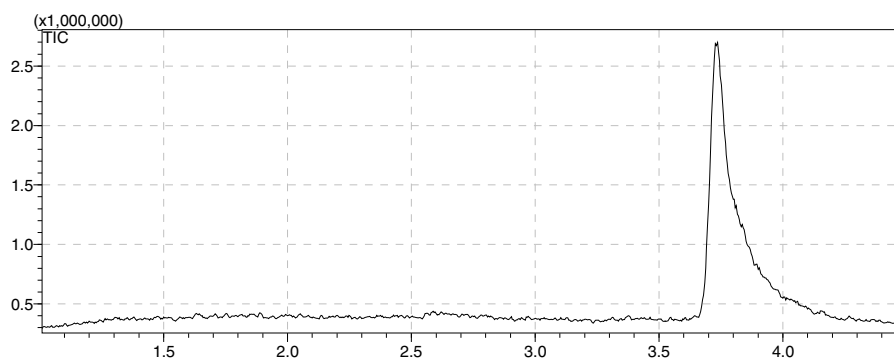
HPLC trace for <b>15a</b>	S2	HPLC trace for <b>17a</b>	S6
HPLC trace for <b>15b</b>	S2	HPLC trace for <b>17b</b>	S7
HPLC trace for <b>15c</b>	S2	HPLC trace for <b>17c</b>	S7
HPLC trace for <b>15d</b>	S3	HPLC trace for <b>17d</b>	S7
HPLC trace for <b>15e</b>	S3	HPLC trace for <b>17e</b>	S8
HPLC trace for <b>15f</b>	S3	HPLC trace for <b>17f</b>	S8
HPLC trace for <b>15g</b>	S4	HPLC trace for <b>17g</b>	S8
HPLC trace for <b>15h</b>	S4	HPLC trace for <b>17h</b>	S9
HPLC trace for <b>15i</b>	S4	HPLC trace for <b>17i</b>	S9
HPLC trace for <b>15j</b>	S5	HPLC trace for <b>21a</b>	S9
HPLC trace for <b>15k</b>	S5	HPLC trace for <b>21b</b>	S10
HPLC trace for <b>15l</b>	S5	HPLC trace for <b>21c</b>	S10
HPLC trace for <b>16a</b>	S6	HPLC trace for <b>23b</b>	S10
HPLC trace for <b>16b</b>	S6	HPLC trace for valilactone	S11

Chromatographic traces are provided below to establish purity of synthesized  $\beta$ -lactones **15a-l**, **16a-b**, **17a-i**, **21a-c**, **23b**, and valilactone. The total ion concentration (TIC) trace is given for compounds that have no UV absorbance.

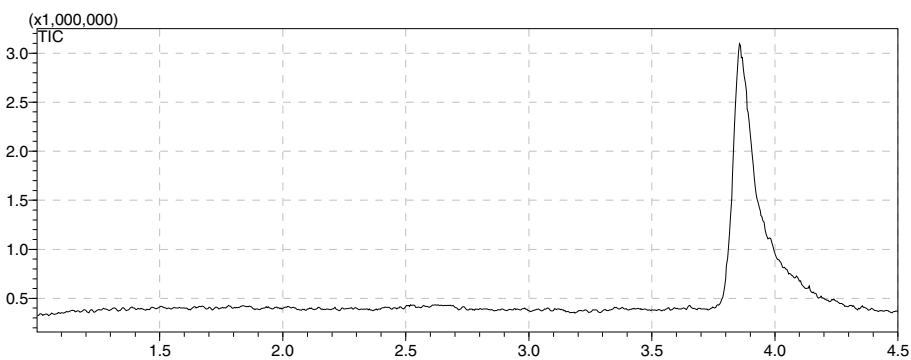
**Compound 15a:**



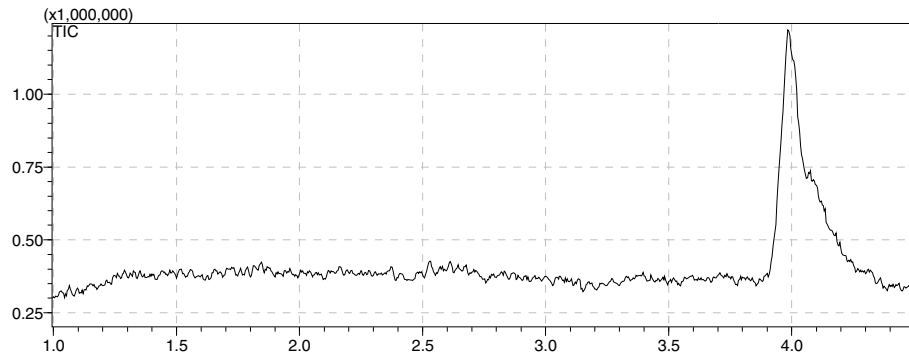
**Compound 15b:**



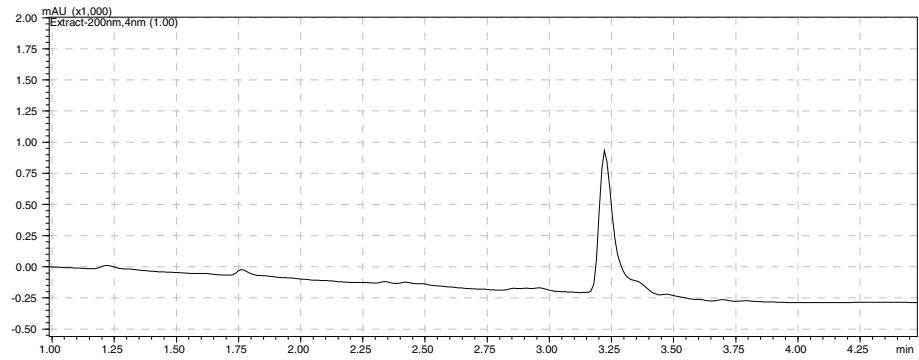
**Compound 15c:**



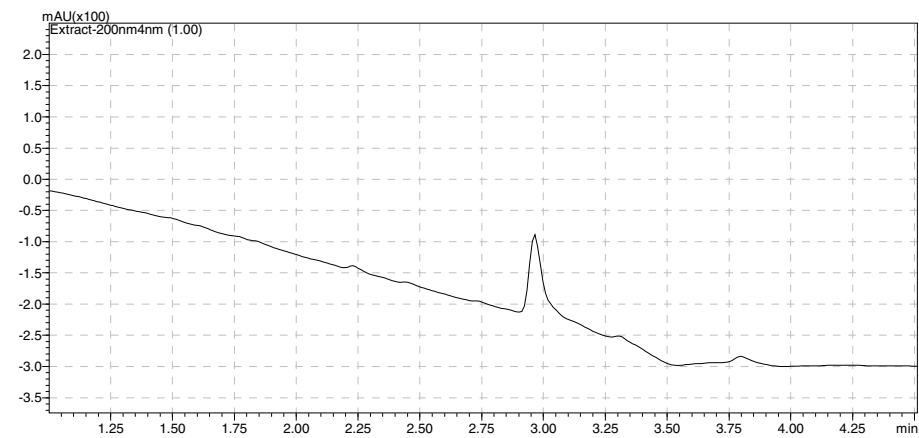
**Compound 15d:**



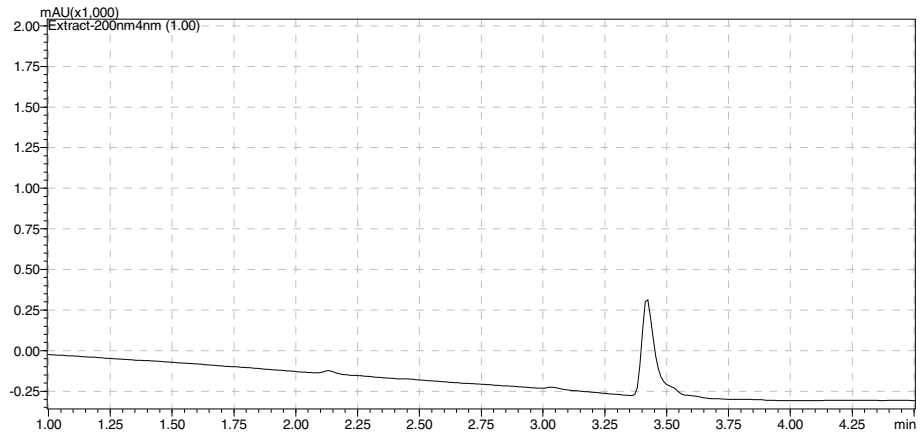
**Compound 15e:**



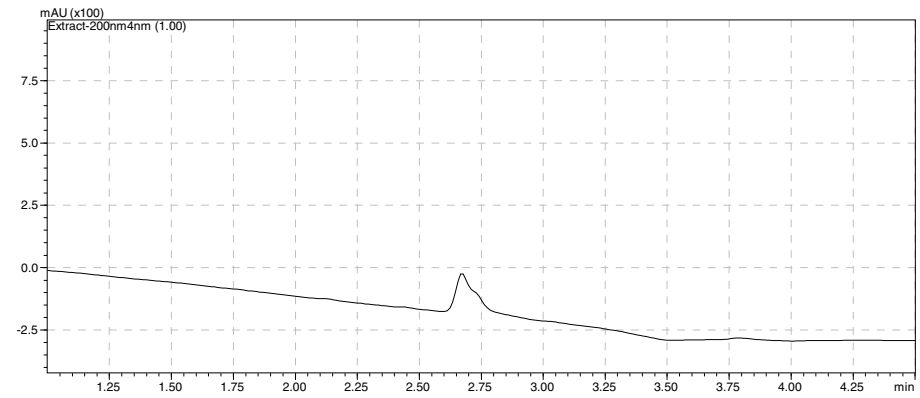
**Compound 15f:**



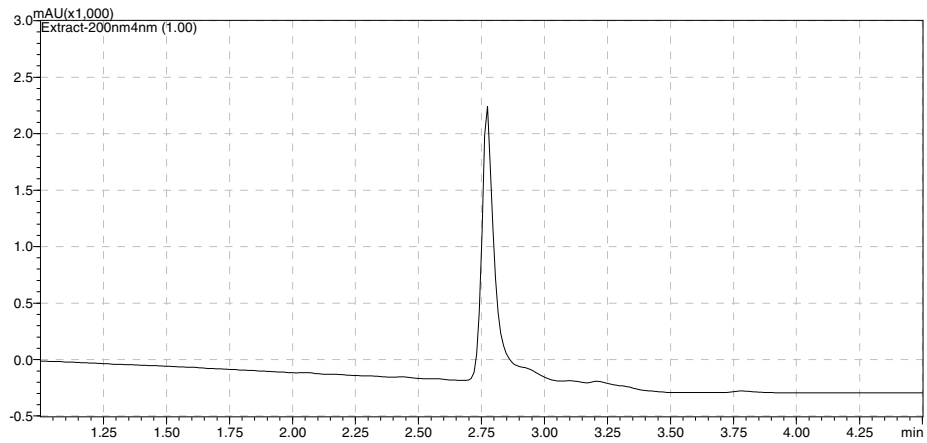
**Compound 15g:**



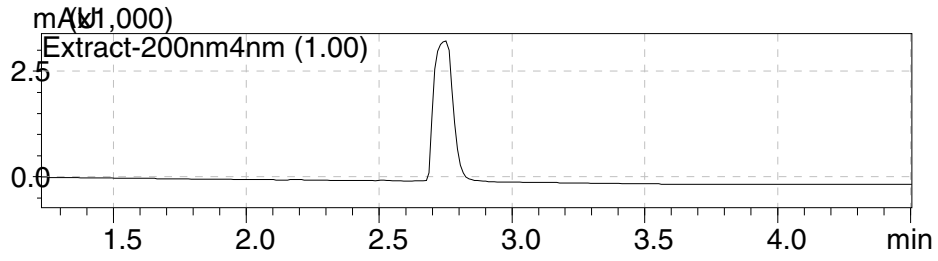
**Compound 15h:**



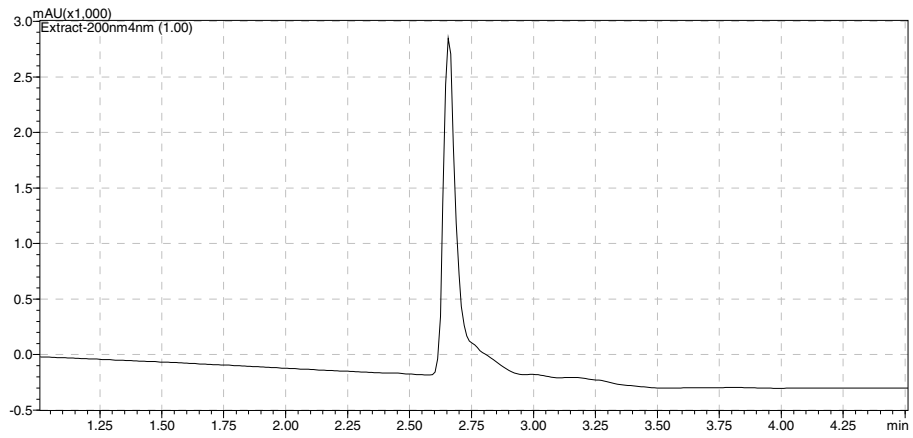
**Compound 15i:**



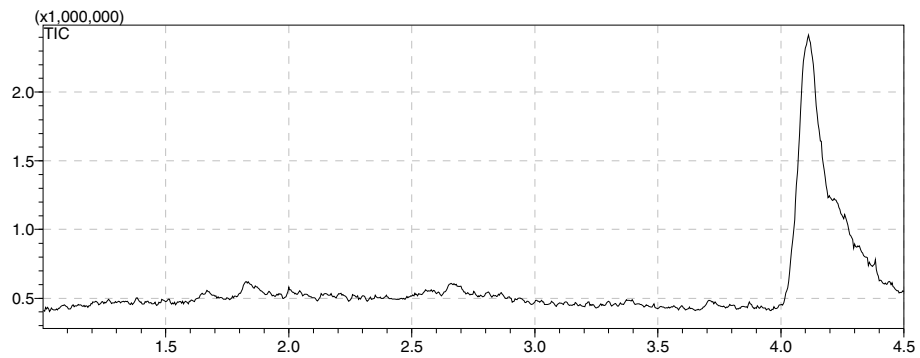
Compound **15j**:



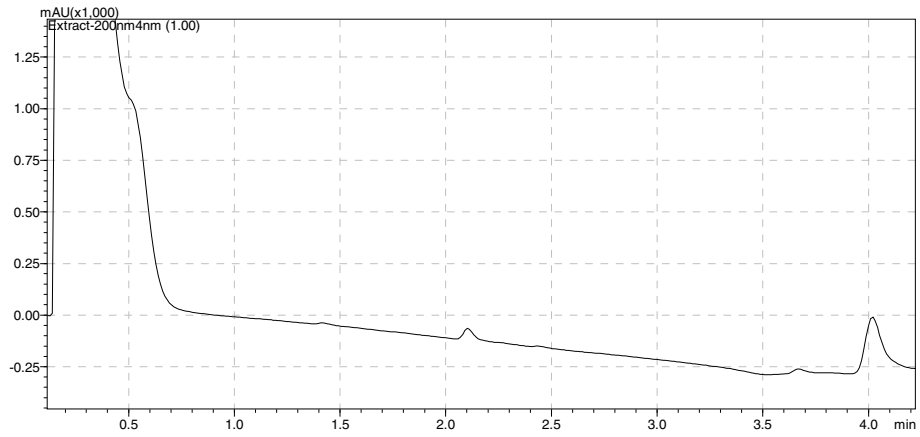
Compound **15k**:



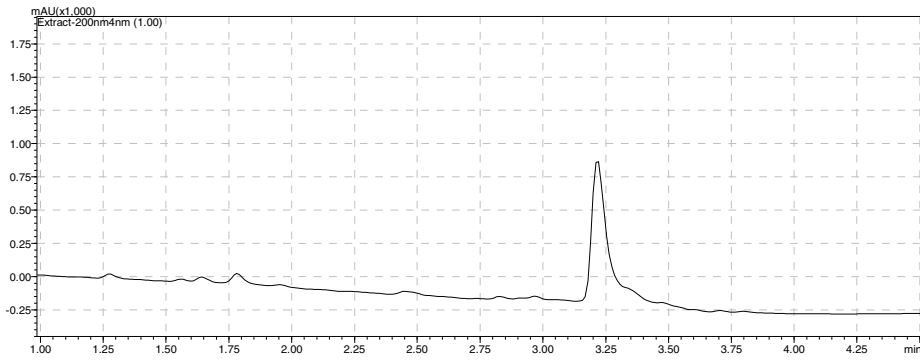
Compound **15l**:



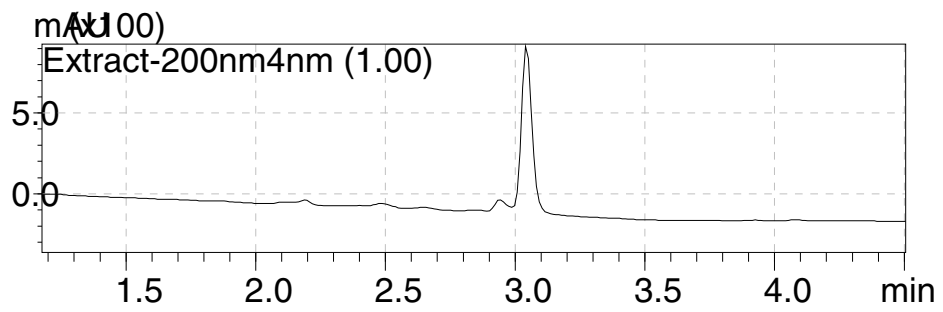
Compound **16a**:



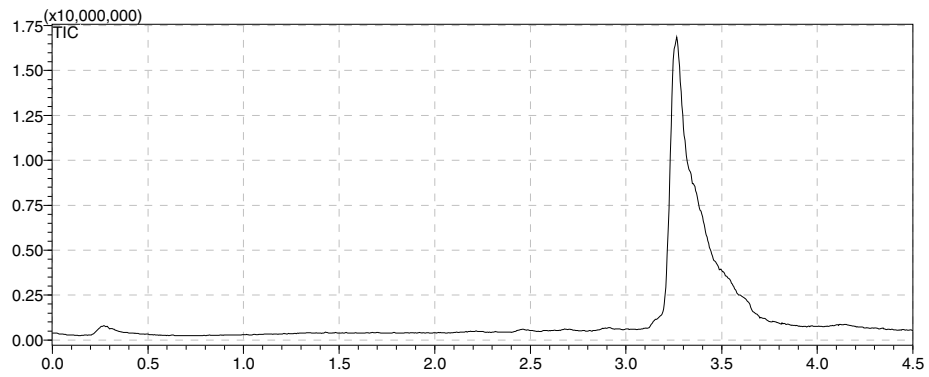
Compound **16b**:



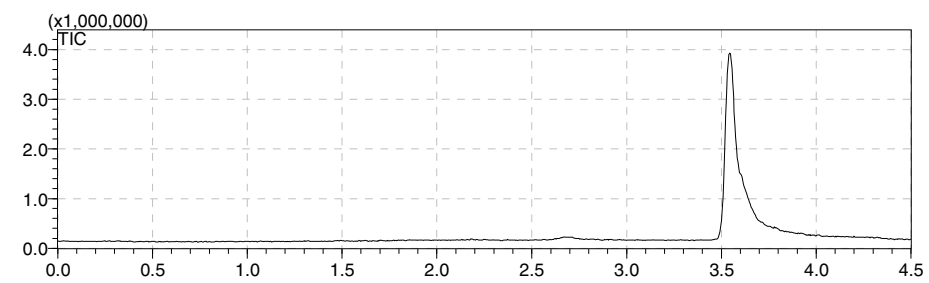
Compound **17a**:



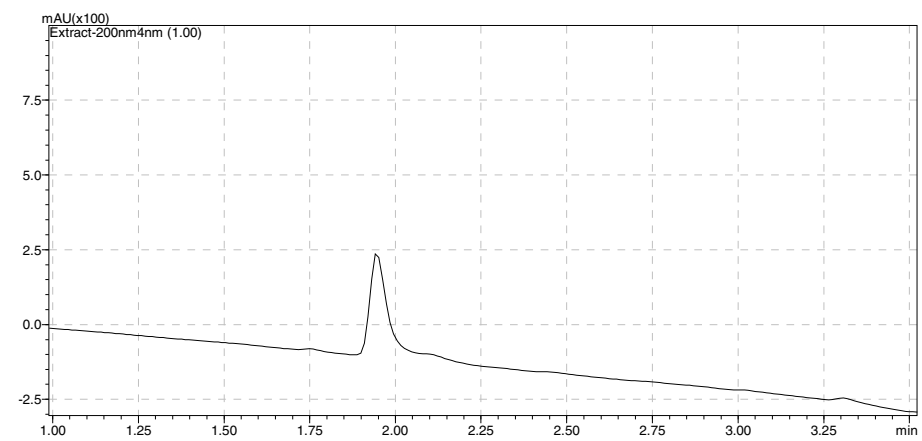
Compound **17b**:



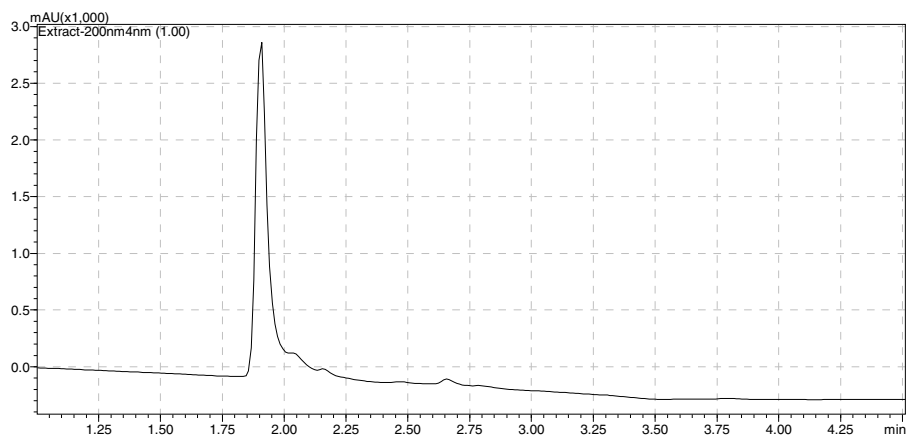
Compound **17c**:



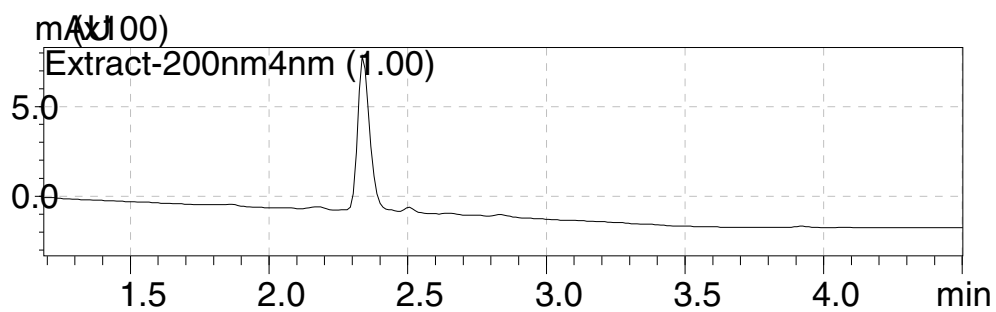
Compound **17d**:



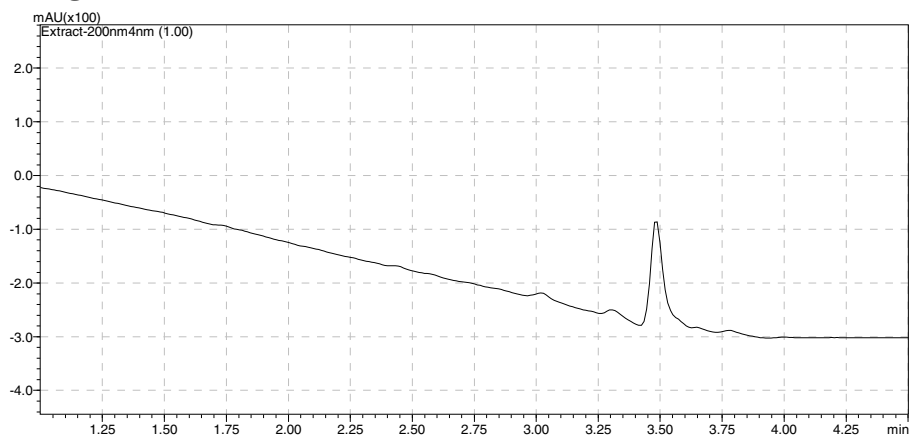
Compound **17e**:



Compound 17f:

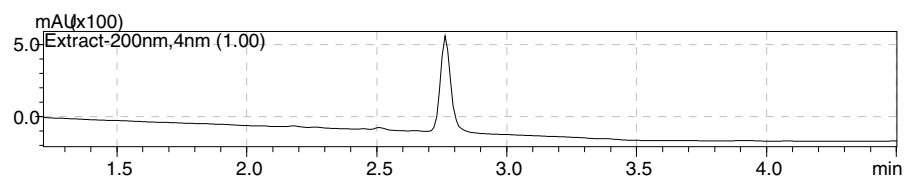


Compound 17g:

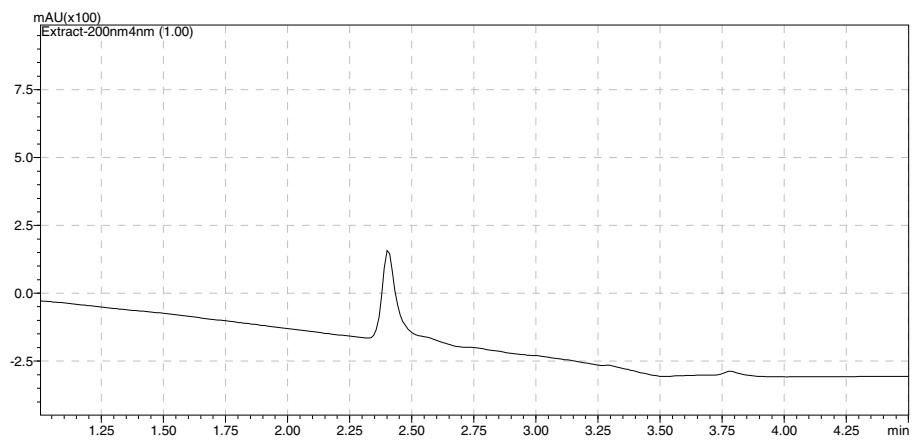


Compound 17h:

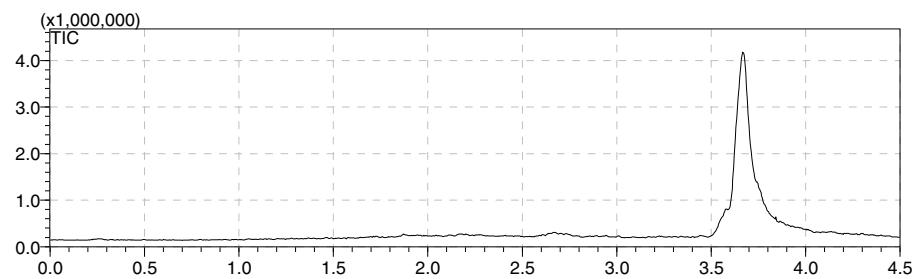




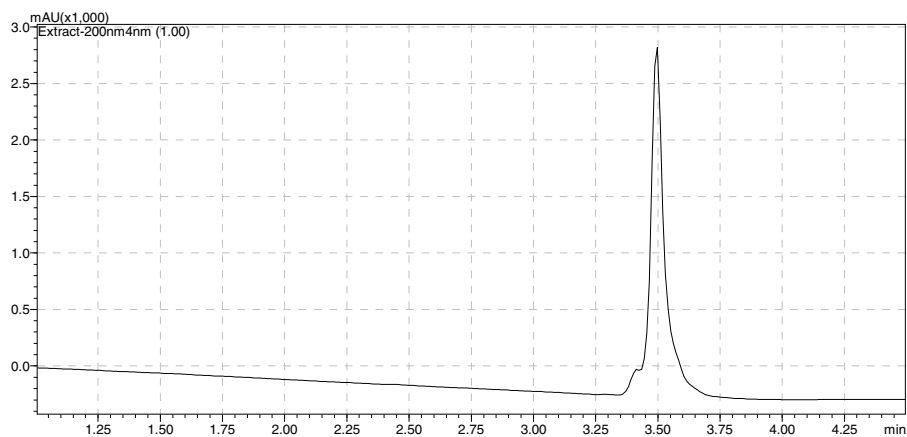
Compound **17i**:



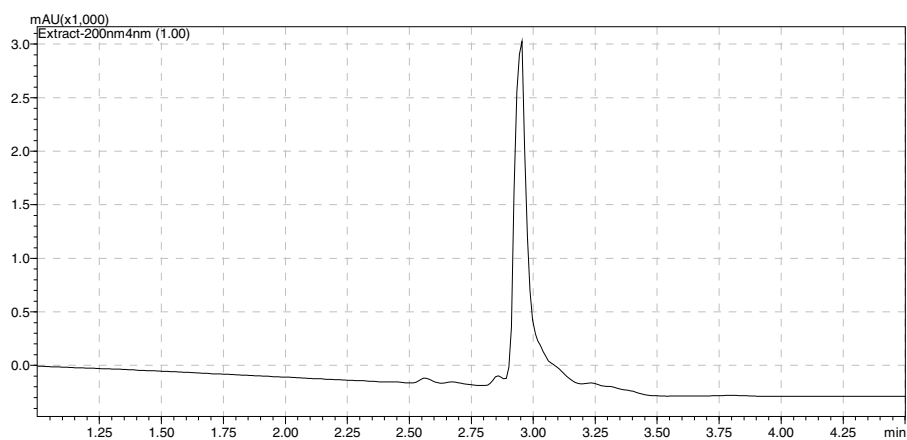
Compound **21a**:



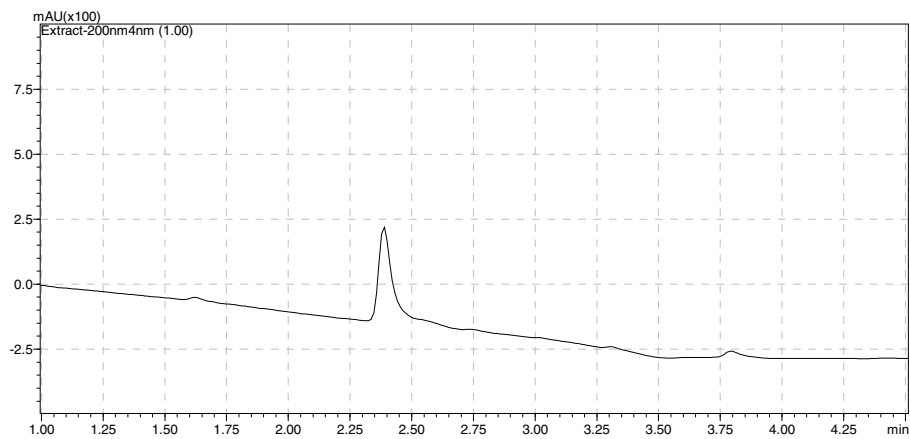
Compound **21b**:



**Compound 21c:**



**Compound 23b:**



**Valilactone:**

