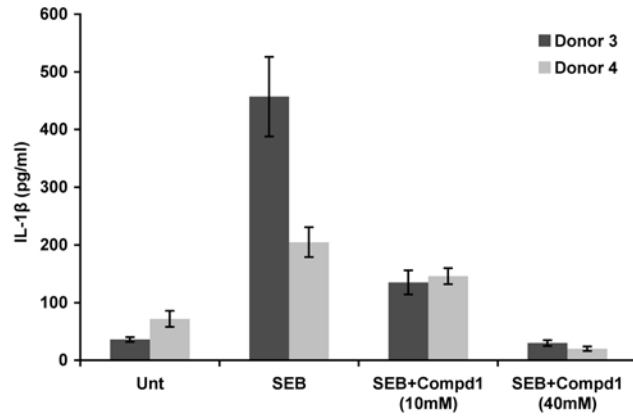
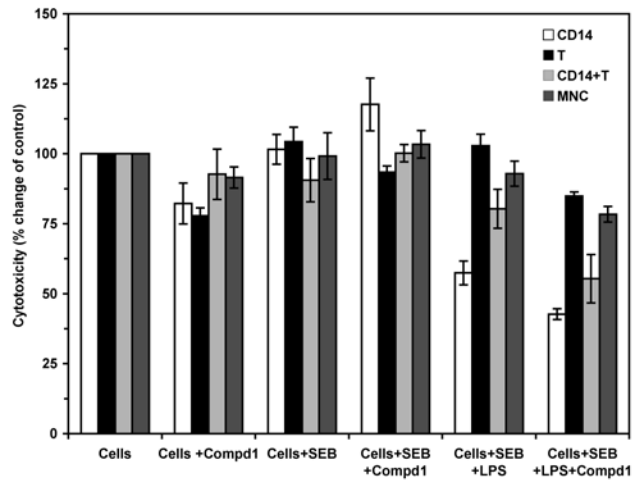


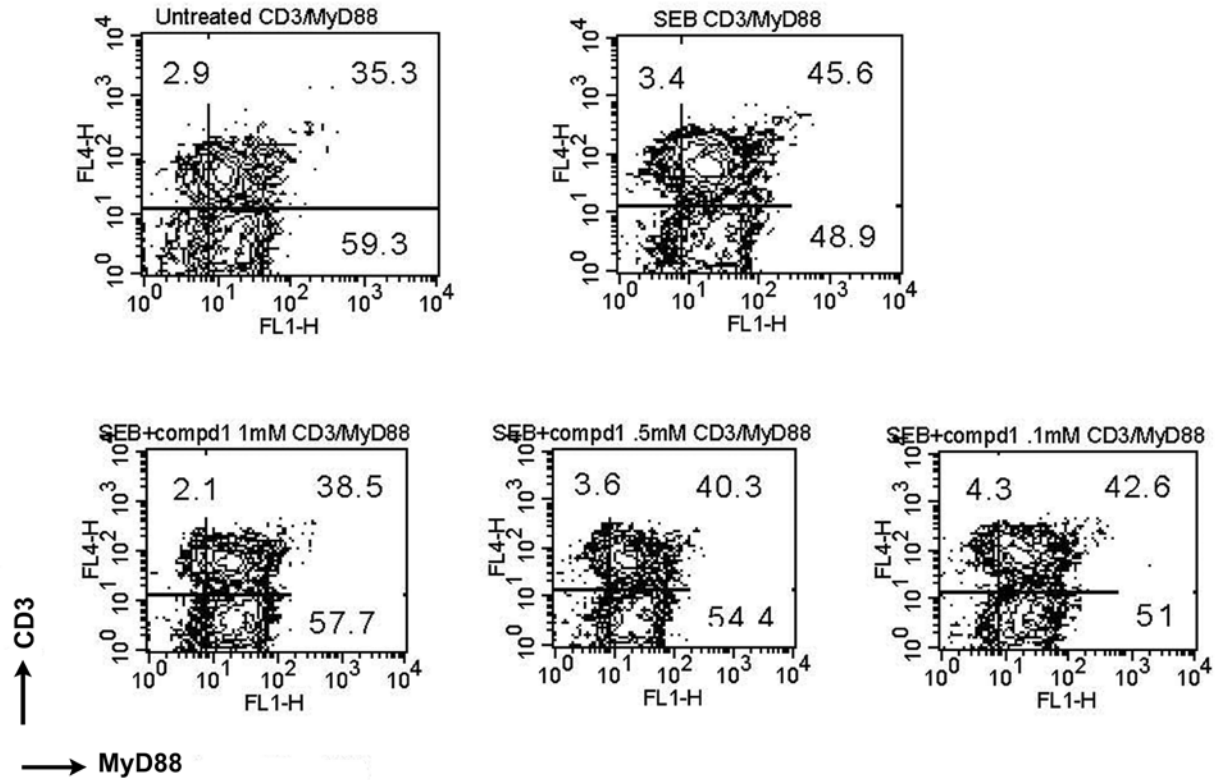
SUPPLEMENTAL DATA



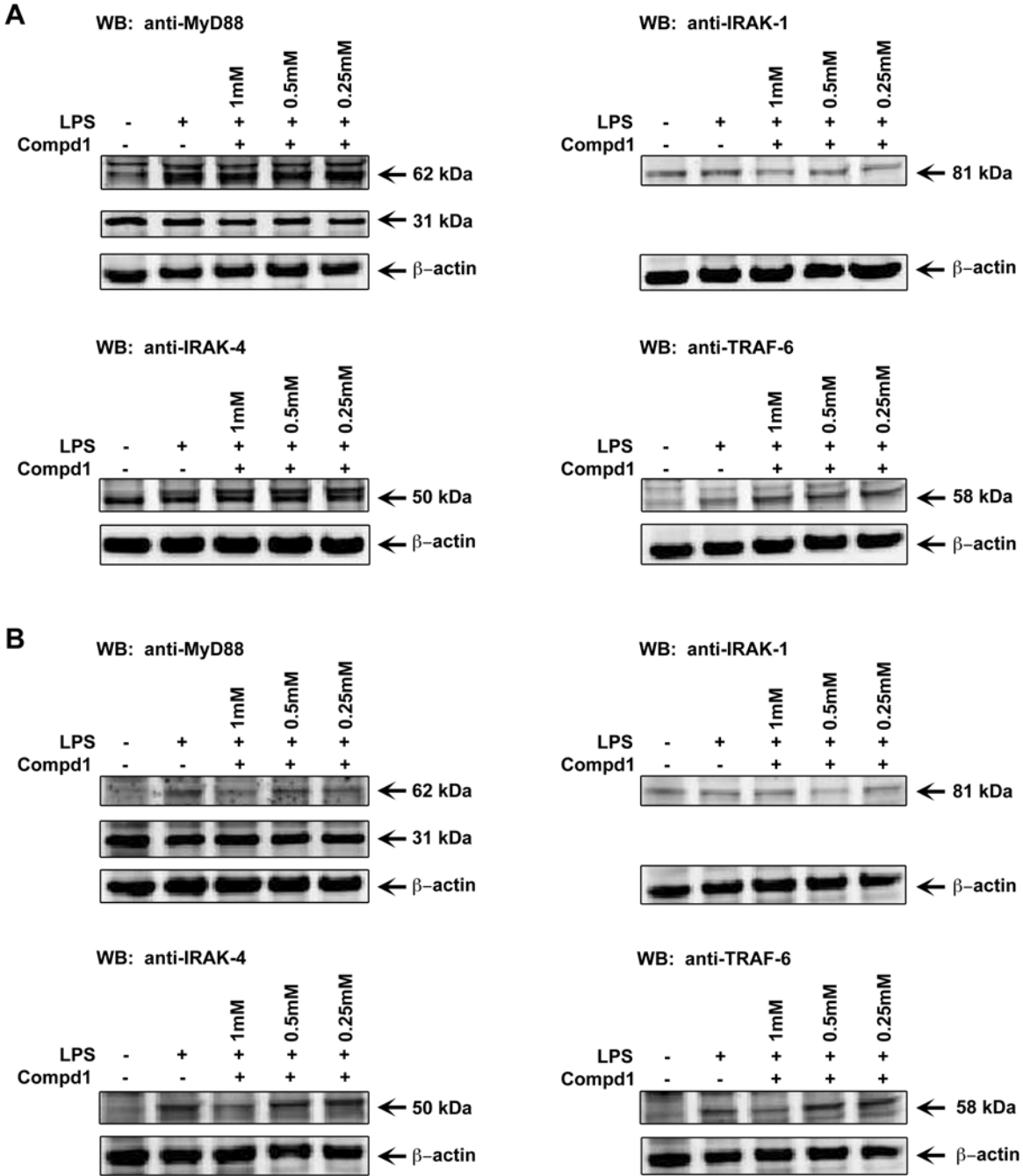
Supplemental Figure 1. Compd1 inhibited SEB-induced IL-1 β response in different donors. MNCs (1×10^6) from two normal donors (Donor 3 and Donor 4) were cultured with SEB (200 ng/ml) with or without Compd1 (10 mM and 40 mM) for 20 h. The culture supernatants were collected and measured for IL-1 β response by MSD assay.



Supplemental Figure 2. Compd 1 did not display cytotoxicity to primary cells at 40 mM. Purified primary cells were cultured with, or without Compd1 (40 mM), SEB (200 ng/ml) or SEB (200 ng/ml) +LPS (1 μ g/ml). After 16 h, viability of cells was examined by measuring ATP content in metabolically active cells using a chemiluminescence method as described elsewhere (20). The data are representative of three independent experiments from three donors.



Supplemental Figure 3. Compd1 inhibited SEB-induced up-regulation of MyD88 in T cells. MNCs were stimulated with SEB or SEB with varying concentration of Compd1 (1 mM, 0.5 mM and 0.1 mM) or kept untreated. Cells were labeled with anti-CD3 antibody, fixed and permeabilized and labeled with anti-MyD88 antibody as described in Experimental Procedures. Cells were analyzed by dual color flow cytometry. Data represent dual color FACS analysis showing up regulation of MyD88 in CD3⁺ T (CD3⁺MyD88⁺) cells after SEB stimulation of MNCs and Compd1 treatment in a dose dependent manner inhibited MyD88 in CD3⁺ T cells.



Supplemental Figure 4. *A*, Effect of Compd1 to MyD88 and downstream signaling components IRAK-1, IRAK-4 and TRAF-6 in MNCs treated with LPS. *B*, Effect of Compd1 to MyD88 and downstream signaling components IRAK-1, IRAK-4 and TRAF-6 in monocytes treated with LPS. MNCs or purified monocytes were treated with LPS (1 μ g/ml) plus Compd1 (1 mM, 0.5 mM or 0.25 mM) for 30 min or left untreated. Cells were lysed, cytoplasmic fractions separated, run by electrophoresis and blotted using an anti-human MyD88 antibody, anti-IRAK-1, anti-IRAK-4 or anti-IRAK-6 antibody. Results are a representative of two experiments.