

Figure S1

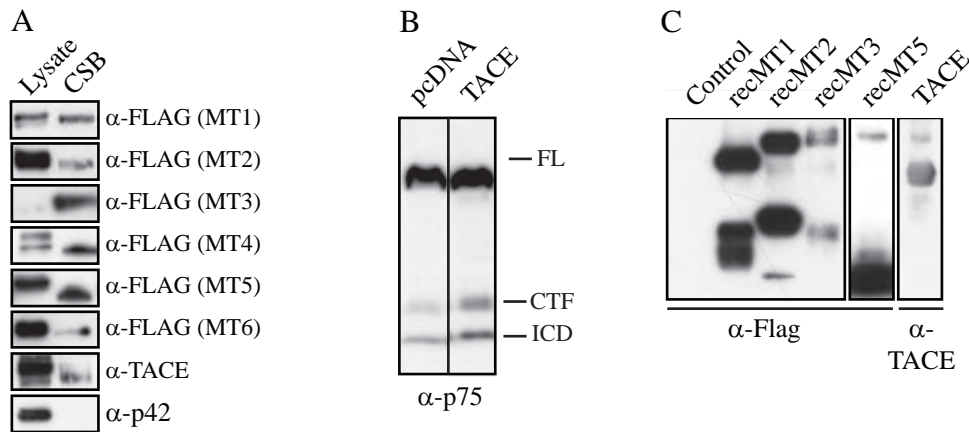


Fig.S1. A. Lysates and cell surface biotinylated (CSB) proteins from COS-7 cells transfected with each MMP construct were assessed by Western blot to verify that the MMPs traffic to the cell surface. p42 was analyzed as a control for cytosolic contamination. The p42 example shown is from the blot examining MT2-MMP. The smaller mature form of each MMP is apparent in the CSB fraction compared to the cell lysate. B. SH-SY5Y cells transfected with p75NTR and TACE in the presence of epoxomicin were analyzed by Western blot with anti-p75 antibody. Regulated intramembrane proteolysis of p75NTR is enhanced by co-transfection with TACE further confirming that TACE is catalytically active. CTF, carboxy-terminal fragment. ICD, intracellular domain. C. Recombinant MMPs analyzed by Western blot. Full length and smaller cleaved fragments are present demonstrating that the MMPs are active and subject to autocatalysis. Recombinant TACE was probed with anti-TACE in non-denaturing conditions.