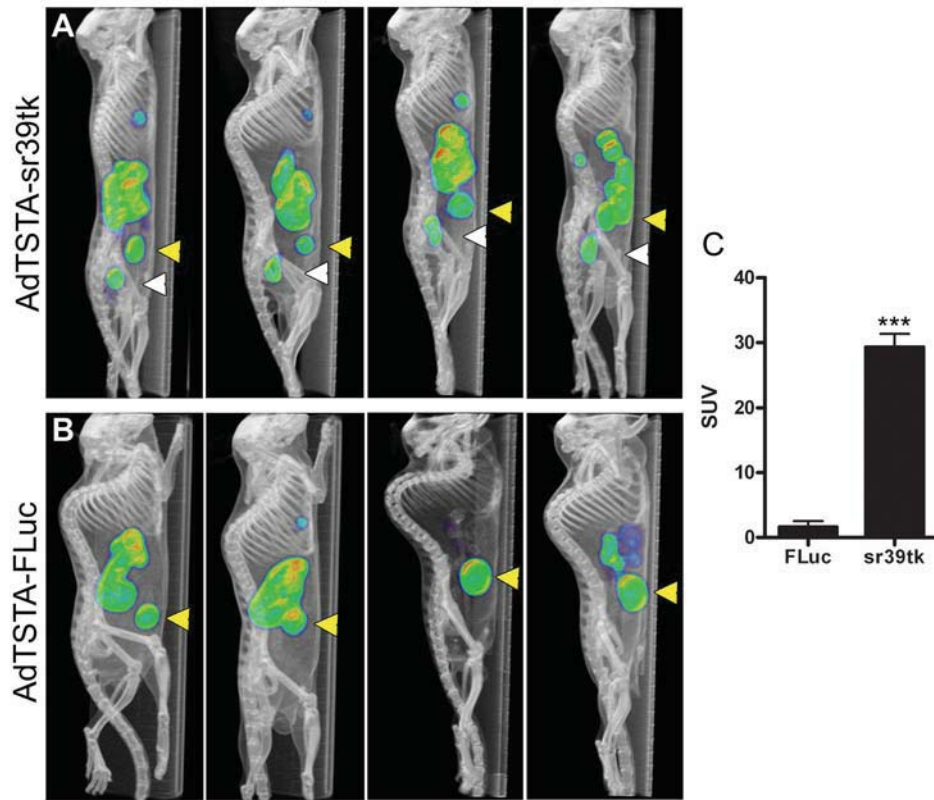


Supplemental Figure 2



Supplemental Figure 2: LAPC9 orthotopic tumors injected with AdTSTA-sr39tk allows consistent PCa detection by microPET. The same protocol as that described in Figure 3 was used. Orthotopic LAPC9 tumors injected with either (A) AdTSTA-sr39tk or (B) AdTSTA-FLuc and then imaged by microPET. Yellow arrows indicate bladder signal, and white arrows indicate orthotopic tumor signal. C. Quantification of ^{18}F -FHBG uptake in sr39tk- versus FLuc-injected orthotopic tumors. SUV: Standard Uptake Value. P-value was obtained by Student's Two-Tailed T-Test, with sr39tk compared to the FLuc group. *** indicates p -value <0.001 .