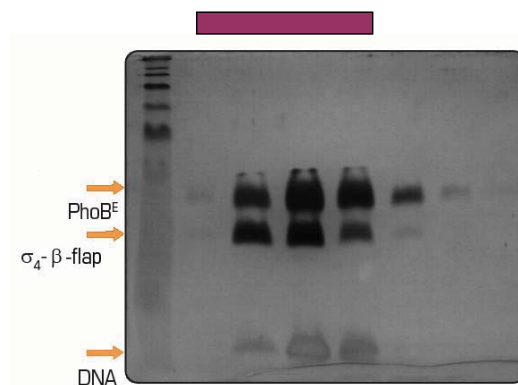
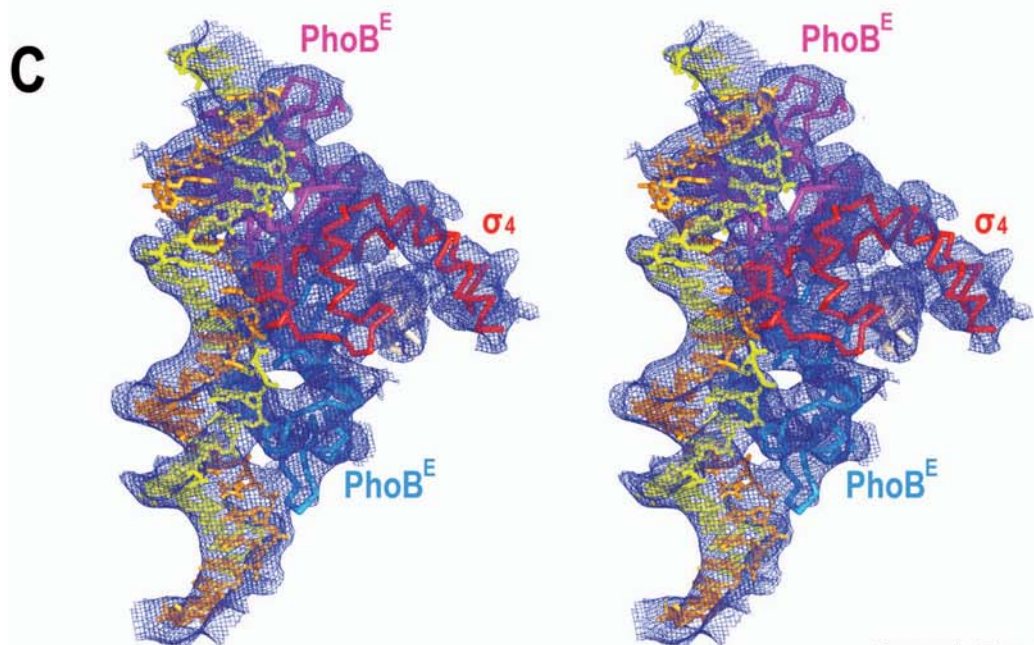
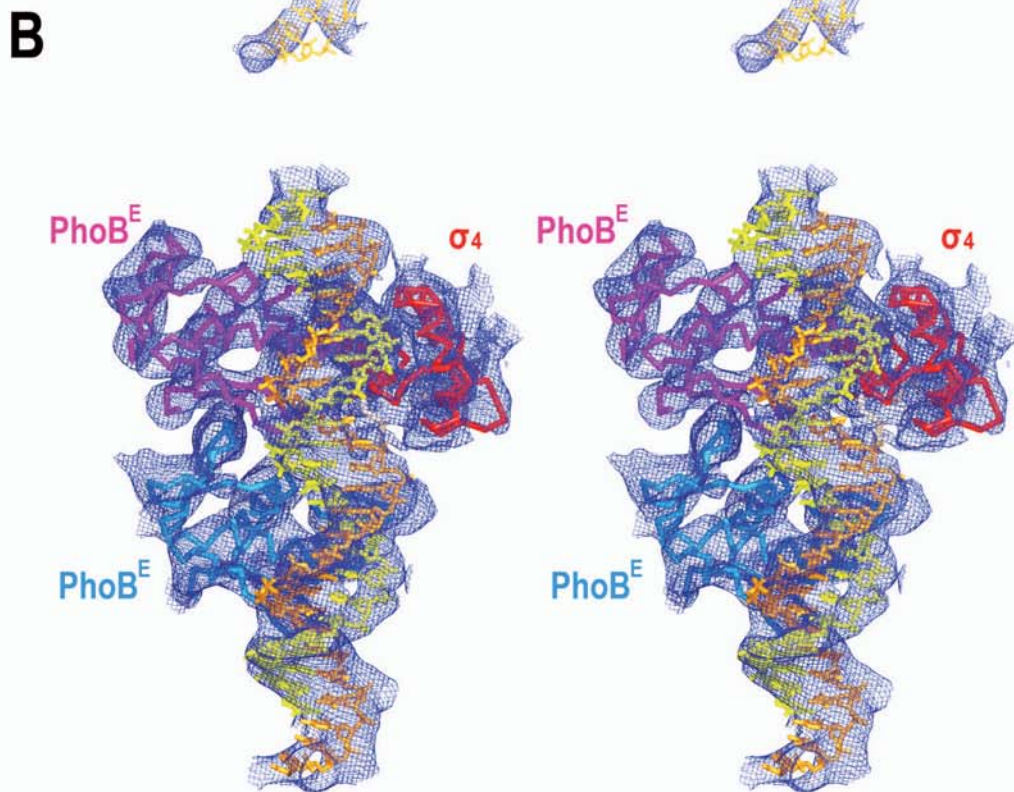
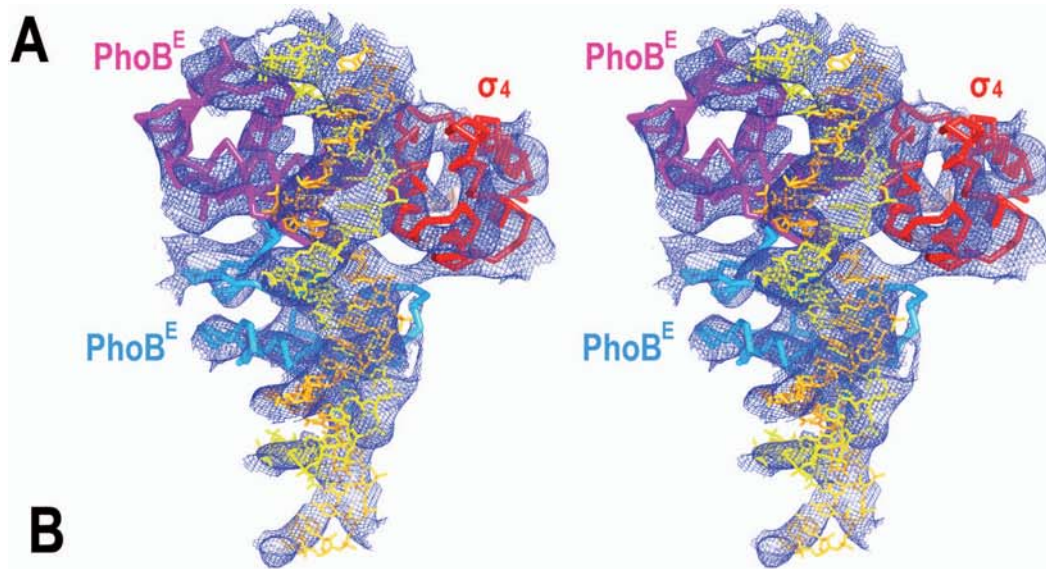


A)



B)

Suppl. Fig. 1



Supplementary Figure legends

Supplementary Figure 1: Preparation of the ternary complex. A) Size-exclusion chromatography elution profile of the σ_4 - β -flap tip helix/PhoB^E/*pho box* DNA ternary complex. B) SDS-PAGE of the fractions corresponding to the main peak in (A) (violet bar). The two proteins (PhoB^E and σ_4 - β -flap tip helix chimera) and the 26-mer DNA oligonucleotide are present in the complex.

Supplementary Figure 2: Electron density maps of the σ_4 - β -flap/PhoB^E/*pho box* DNA complex. A) Experimental σ_A -weighted electron density map of the ternary complex at 4.3 Å after density modification and phase extension, contoured at 1 σ . The final model is shown fitted in the density. B) and C) σ_A -weighted electron density map of the ternary complex at 4.3 Å after rigid body refinement of the different components of the complex.