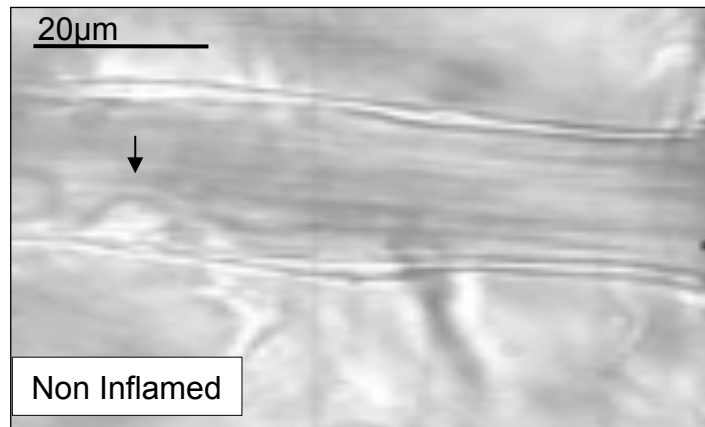
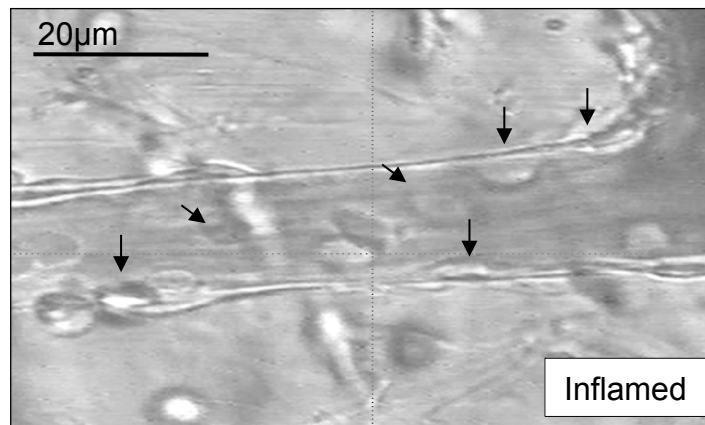


**Figure 1S. Combination of CsH and WRW<sub>4</sub> does not affect Ac2-26-induced AnxA1 mobilization in human PMN.** Human PMN were pre-treated at the same time with CsH and WRW<sub>4</sub> (both 10  $\mu$ M, 10 min), prior addition of vehicle (CTR) or Ac2-26 (10  $\mu$ M) for further 30 min. Subcellular fractions were then processed and analyzed by Western blotting. Representative blot shows membrane and cytosol AnxA1 expression and  $\beta$ -actin as loading control.

**A**



**B**



**Figure 2S. Images from mouse mesenteric microcirculation.** *A*, Control, non-inflamed postcapillary venule. *B*, Post-capillary venule inflamed after ischaemia-reperfusion protocol (30-45min) induced by occlusion of superior mesenteric artery (SMA). Arrows indicate adherent leukocytes.