

Figure E1: This figure shows the steps of our quantitative morphological analysis of H&E stained lung parenchyma.

## Quantitative histology

Equivalent diameters:  $D_{eq}$   
Area weighted mean diameter of air spaces:  $D_2$

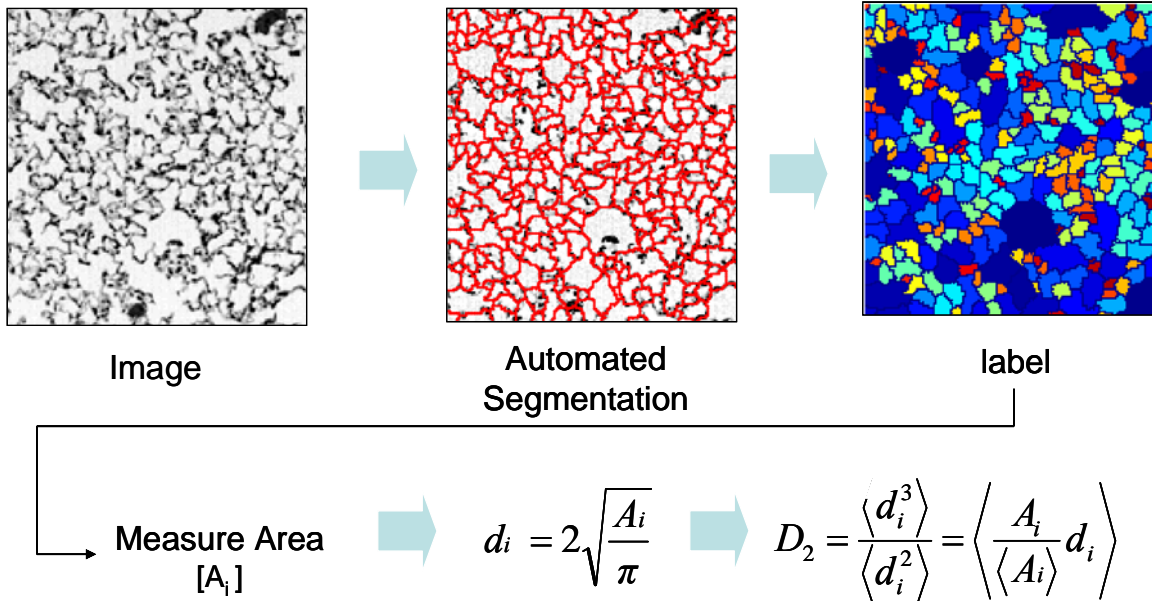


Figure E2: Representative Western blots in 2 samples from saline treated (Sa21) and 2 samples from PPE treated (PPE21) lung homogenates.

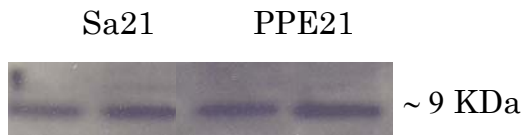


Figure E3: Enlarged collagen stained region from Fig. 3D. The arrow points to a thin wall under tension containing only collagen.

