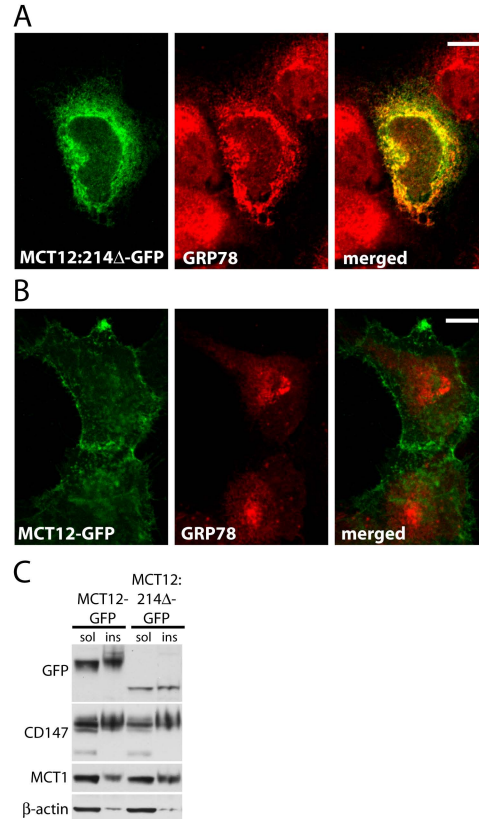


## Figure S3



**Figure S3.** Expression of MCT12 constructs in HLE-B3 cells and solubility of fusion proteins. To confirm that the expression patterns of the MCT12 fusion proteins were not cell-type specific, we expressed MCT12:214Δ-GFP (**A**) and MCT12-GFP (**B**) in the HLE-B3 lens epithelial cell line. Bar = 10μm. (**C**) To determine if protein solubility was the cause of the different levels of MCT12-GFP and MCT12:214Δ-GFP expressed in HEK-293 cells, we resuspended Triton-insoluble pellets with lysate-equivalent volumes of LDS sample buffer and performed western blots of volumes equivalent to 10 μg from the soluble fraction.