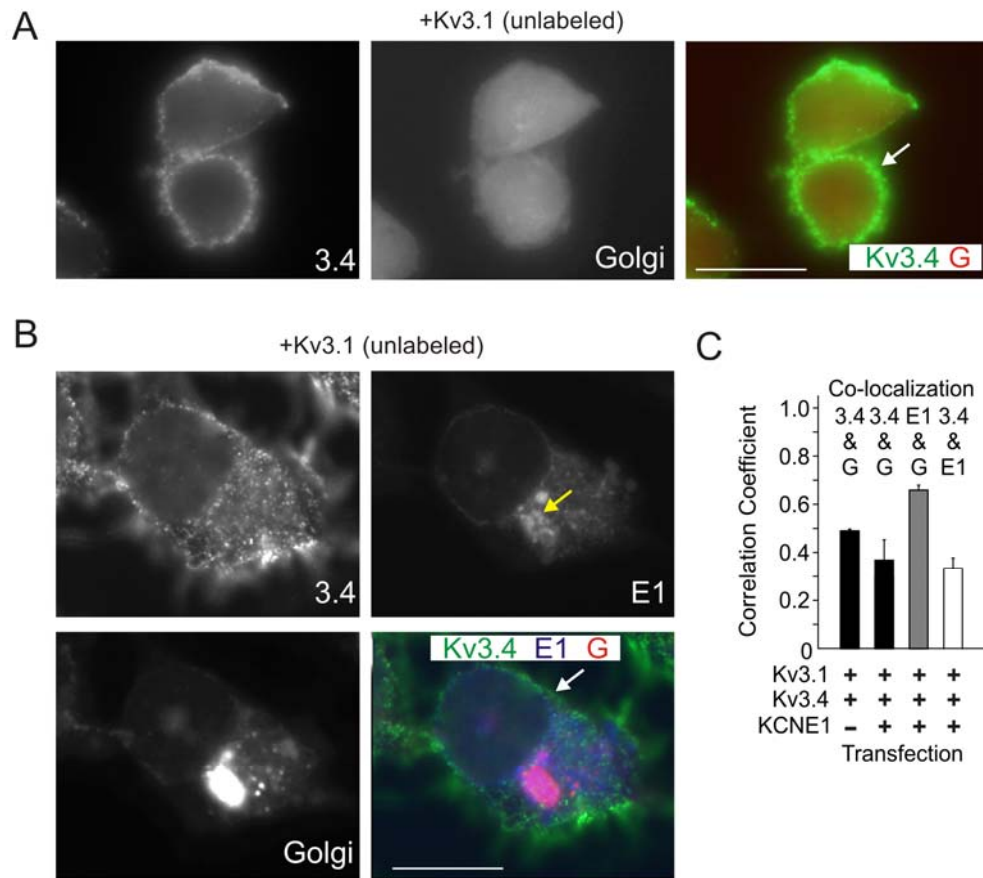


# **KCNE1 and KCNE2 Provide a Checkpoint Governing Voltage-Gated Potassium Channel $\alpha$ -Subunit Composition**

Vikram A. Kanda, Anthony Lewis, Xianghua Xu, and Geoffrey W. Abbott

Department of Pharmacology, Weill Medical College of Cornell University, New York, New York

**Supporting Material**

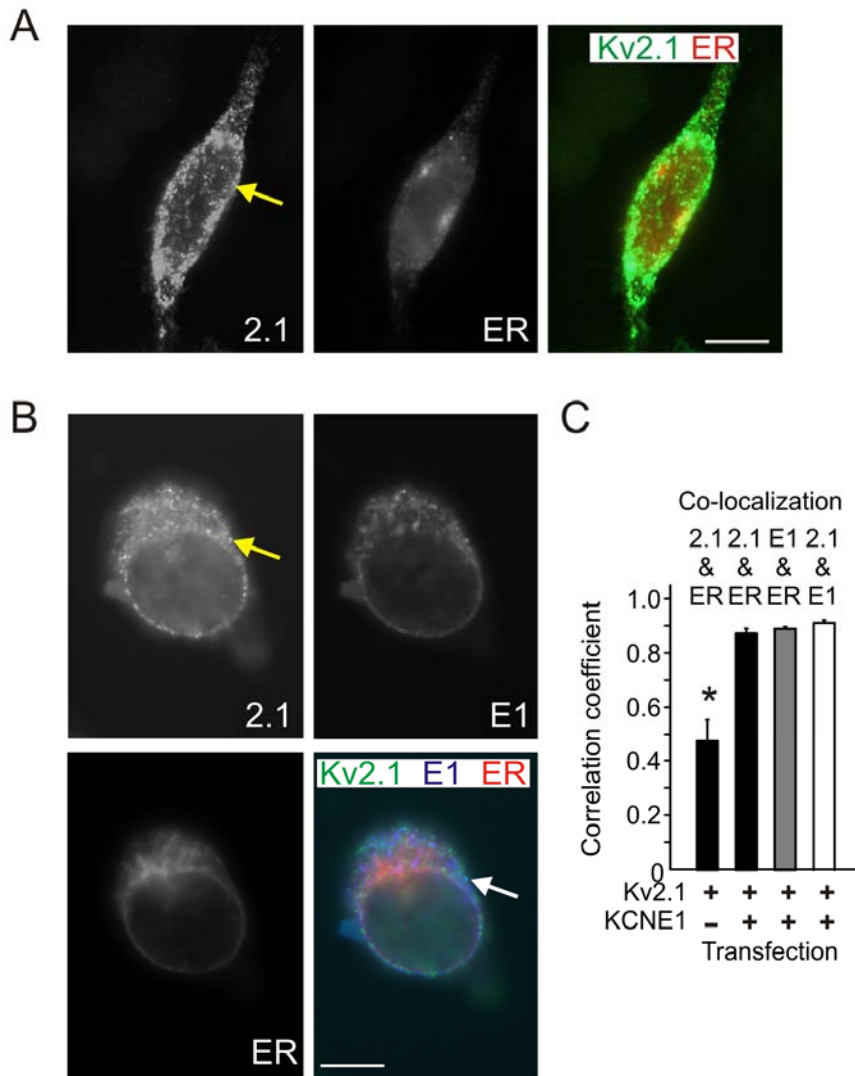


**Supplementary Figure 1. Kv3.1 and Kv3.4 form a bipartite surface-expressed complex lacking KCNE1**

A. Immunofluorescence analysis of CHO cells transfected with cDNA encoding Kv3.1 (unlabeled), Kv3.4 (green), and a fluorescent Golgi marker (red). Scale bars: 5  $\mu$ m. Representative images, taken from at least 5 images per group, are shown. Single-wavelength images are shown in monochrome for clarity; the double-wavelength, merged image is shown in color. White arrow: Kv3.4 at the cell surface (green).

B. Immunofluorescence analysis of CHO cells transfected with cDNA encoding Kv3.1 (unlabeled), Kv3.4 (green), rat KCNE1-HA (blue), and a fluorescent Golgi marker (red). Scale bars: 5  $\mu$ m. Representative images, taken from at least 5 images per group, are shown. Single-wavelength images are shown in monochrome for clarity; the triple-wavelength, merged image is shown in color. Yellow arrow: KCNE1 in the Golgi; white arrow: Kv3.4 at the cell surface (green).

C. Quantification of co-localization from images as in panels A and B using Pearson's correlation coefficient,  $n = 5$  cells per group.



**Supplementary Figure 2. KCNE1 impairs Kv2.1 surface expression, but also localizes with Kv2.1 at the cell surface**

A. Immunofluorescence analysis of CHO cells transfected with cDNA encoding Kv2.1 (green) and a fluorescent ER marker (red). Scale bars: 5  $\mu$ m. Representative images, taken from at least 6 images per group, are shown. Single-wavelength images are shown in monochrome for clarity; the double-wavelength, merged image is shown in color. Yellow arrow: Kv2.1 at the cell surface.

B. Immunofluorescence analysis of CHO cells transfected with cDNA encoding Kv2.1 (green), rat KCNE1-HA (blue), and a fluorescent ER marker (red). Scale bars: 5.5  $\mu$ m. Representative images, taken from at least 6 images per group, are shown. Single-wavelength images are shown in monochrome for clarity; the triple-wavelength, merged image is shown in color. Yellow arrow: Kv2.1 in a punctuate pattern at the cell surface; white arrow: same region, showing Kv2.1-KCNE1 co-localization in a punctuate pattern at the cell surface (aquamarine).

C. Quantification of co-localization from images as in panels A and B using Pearson's correlation coefficient,  $n = 6-11$  cells per group, \*  $p < 0.05$ .