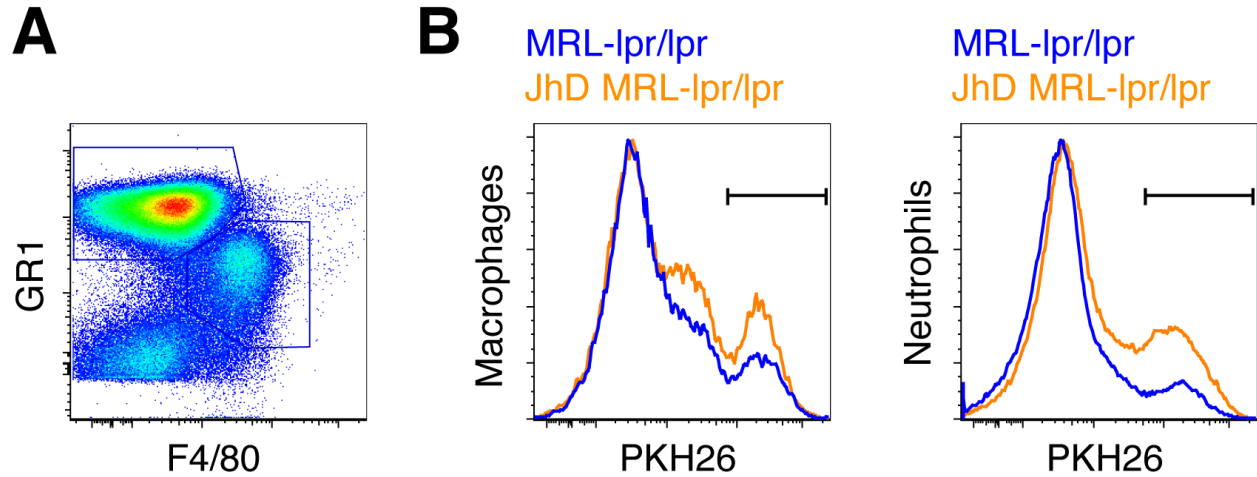


Supplemental Figure 1. SDS PAGE analysis of MRL/lpr serum and after separation by Protein G chromatography into IgG and IgG-depleted fraction. Serum was collected and fractions purified as described in Methods. Fractions were all adjusted to a volume equal to the original unseparated serum applied to the column and then equal volumes were applied to the column. The gel was stained with Coomassie blue. Lanes are as indicated, with lane 2 being a purified IgG2b standard.



Supplemental Figure 2. Sample FACS data from phagocytosis assays represented in Figure 5. (A) Pseudocolor plot illustrates the gating of macrophages ($F4/80^{hi}Gr1^{int}$) and neutrophils ($Gr1^{hi}F4/80^{-/lo}$) after gating on $CD11b^{+}$ cells (about 95%). (B) Uptake of PKH26 labeled SRBC. Representative flow cytometric data on gated macrophages (left) and neutrophils (right).