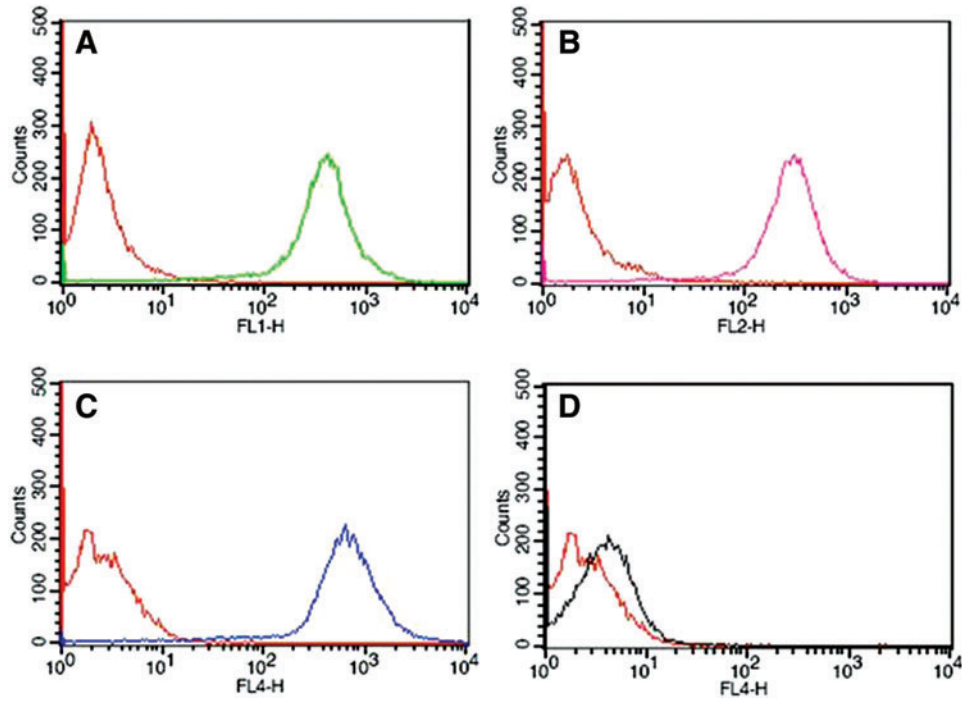


## Supplementary Data



**SUPPLEMENTARY FIG. S1.** FACS analysis of adipose-derived stem cells. Note that CD90, CD73, and CD105 were highly expressed, whereas CD34 was not in adipose-derived stem cells. Control (*red*), (A) (CD90, *green*), (B) (CD73, *pink*), (C) (CD105, *blue*), and (D) (CD34, *black*).