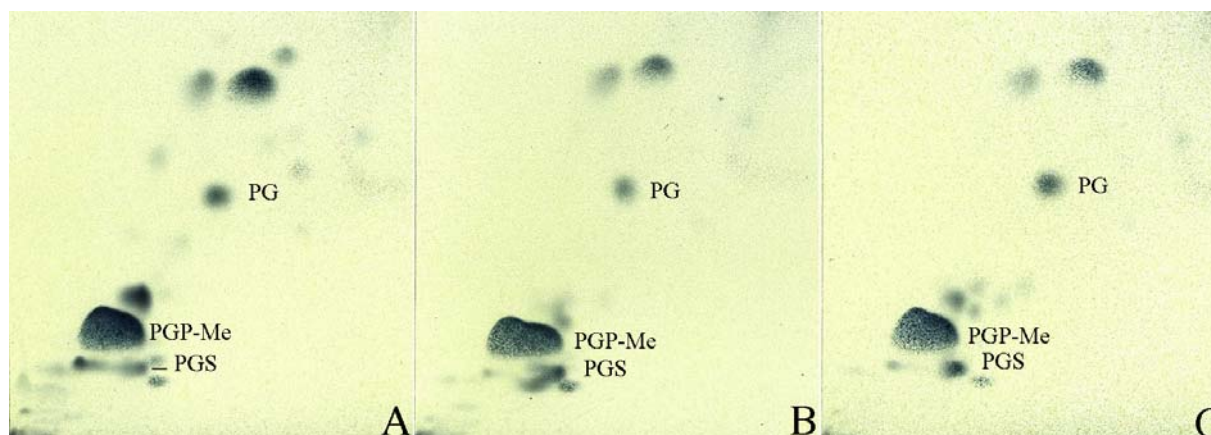


Supplementary Fig. S1. Phase-contrast micrographs of cells of strains Halo-G^{+T} (A) and Naxos II (B) from liquid cultures grown under optimal conditions to late-exponential phase. Bars, 10 µm.



Supplementary Fig. S2. Two-dimensional TLC of polar lipids extracted from strains Halo-G^{+T} (A), Naxos II (B) and AUS-1 (C). The solvent system consisted of chloroform/methanol/water (65:25:4, by vol.) in the first dimension and chloroform/methanol/glacial acetic acid/water (80:12:15:4, by vol.) in the second dimension. PG, Phosphatidylglycerol; PGP-Me, phosphatidylglycerol methylphosphate; PGS, phosphatidylglycerolsulfate.