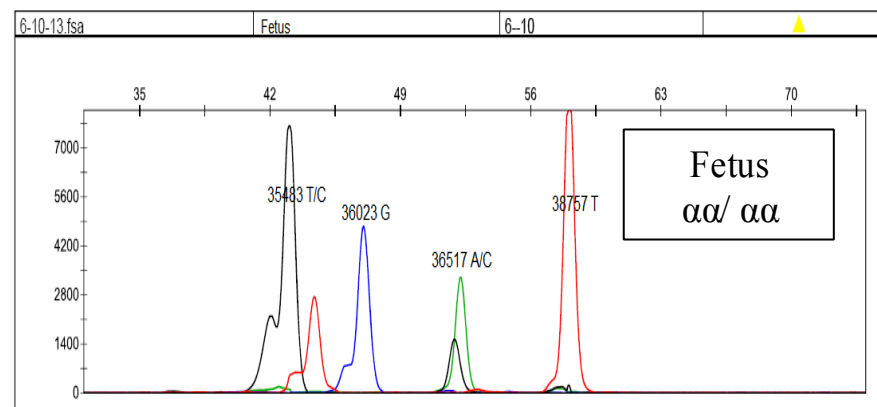
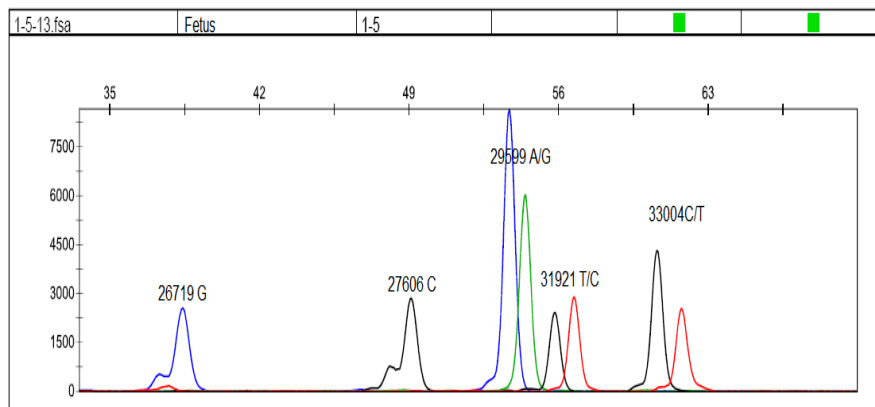
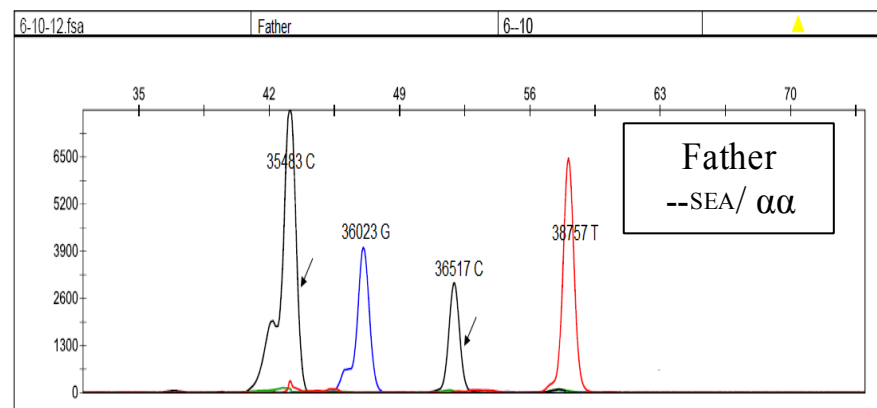
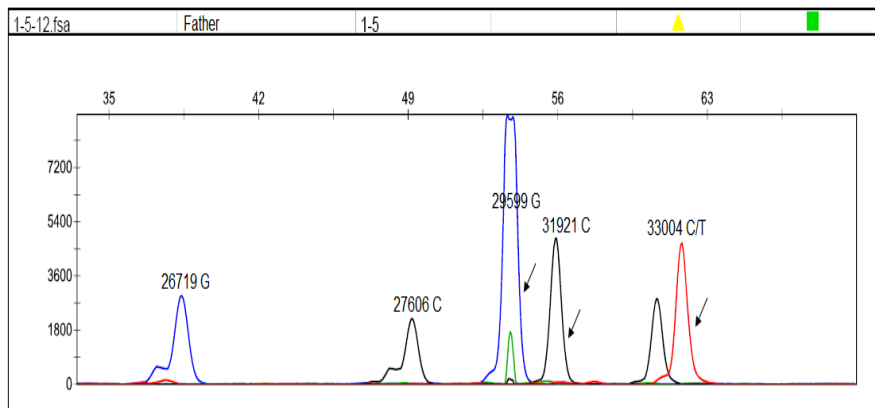
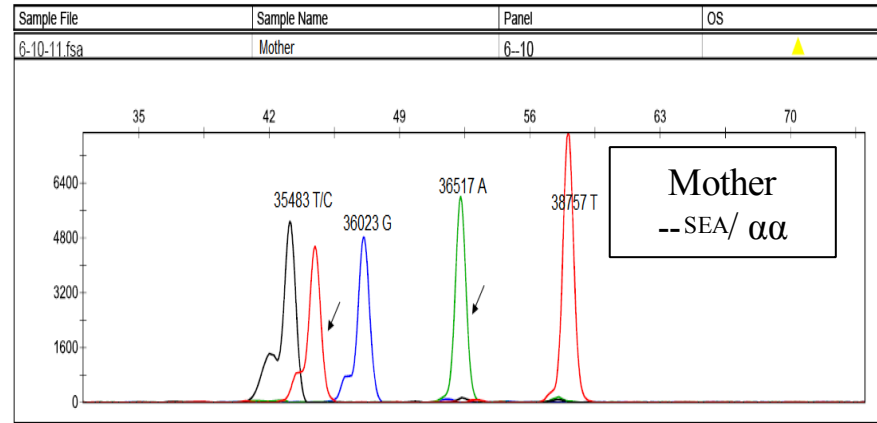
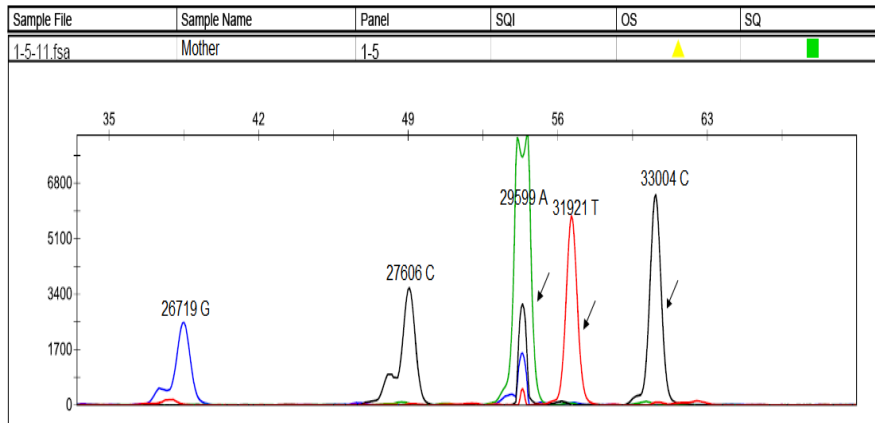
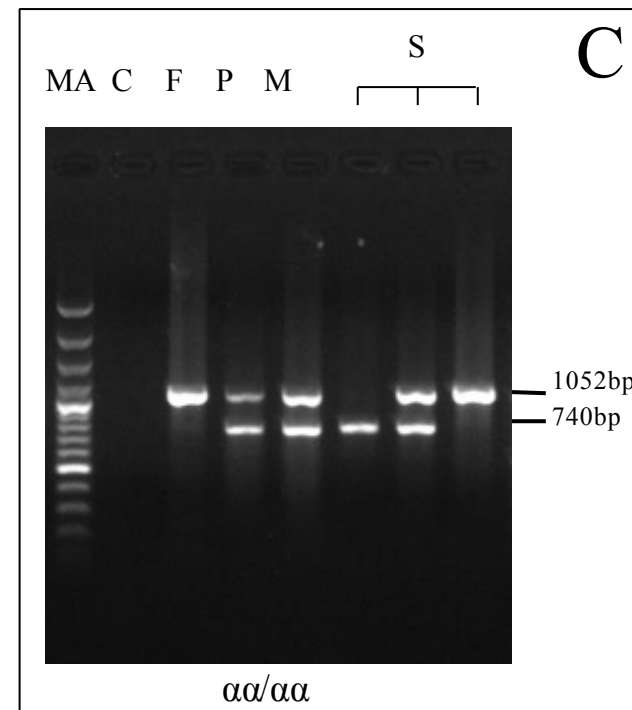
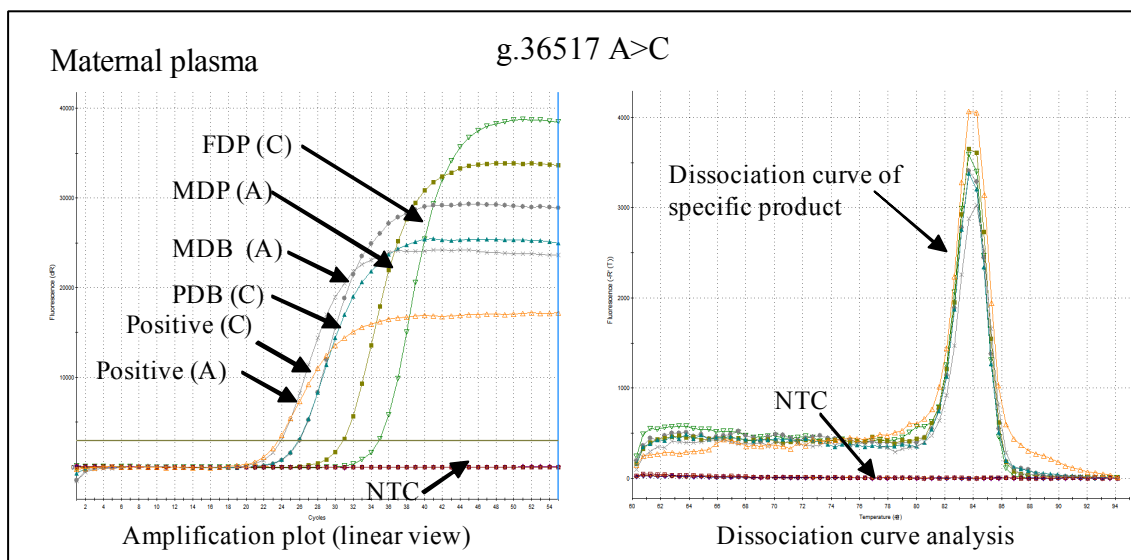
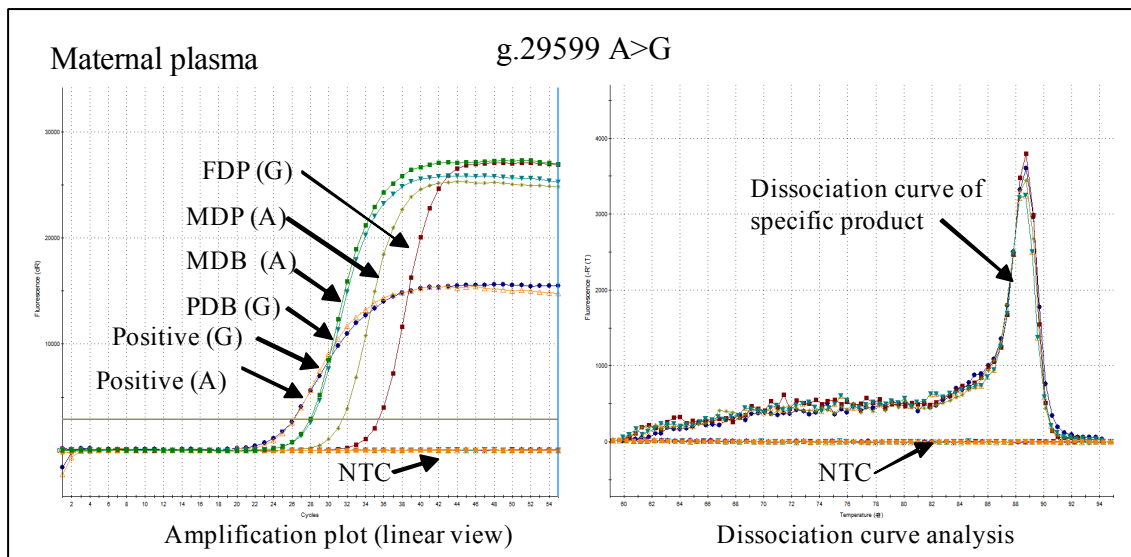


**A**

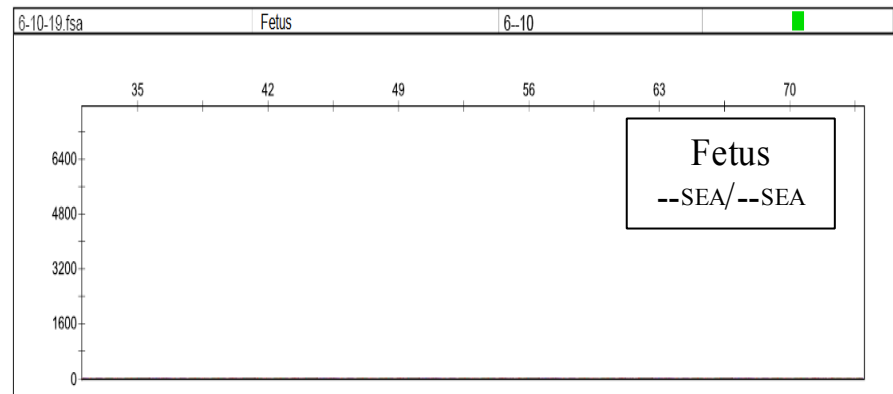
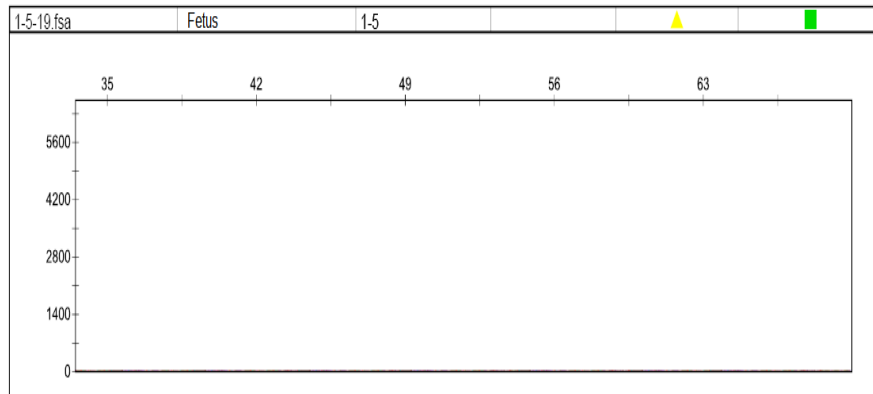
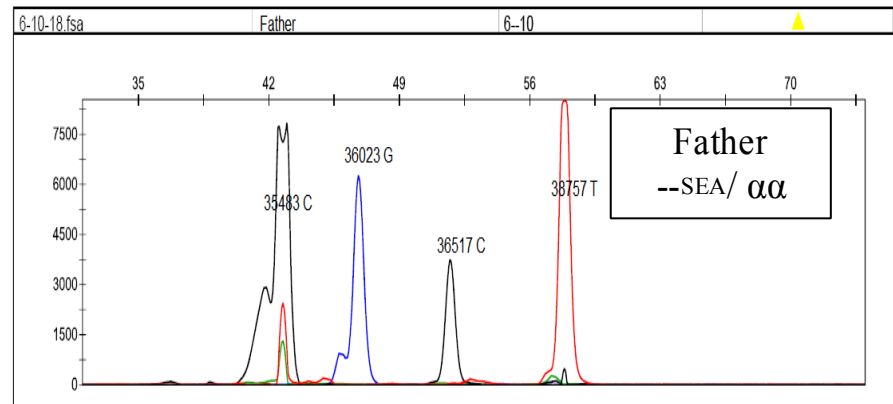
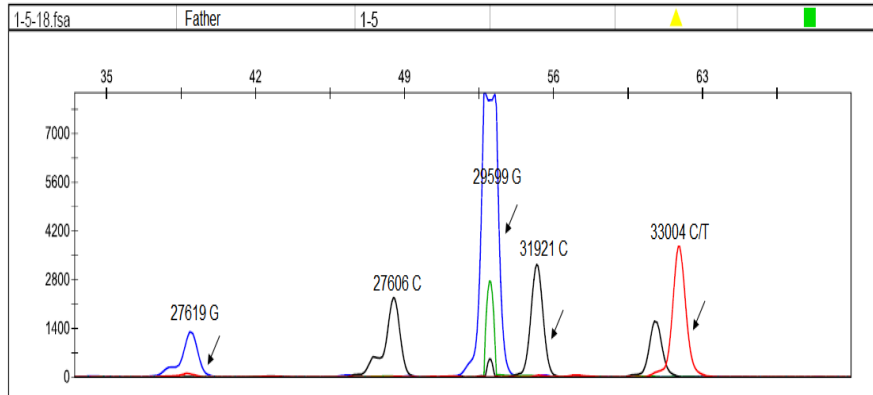
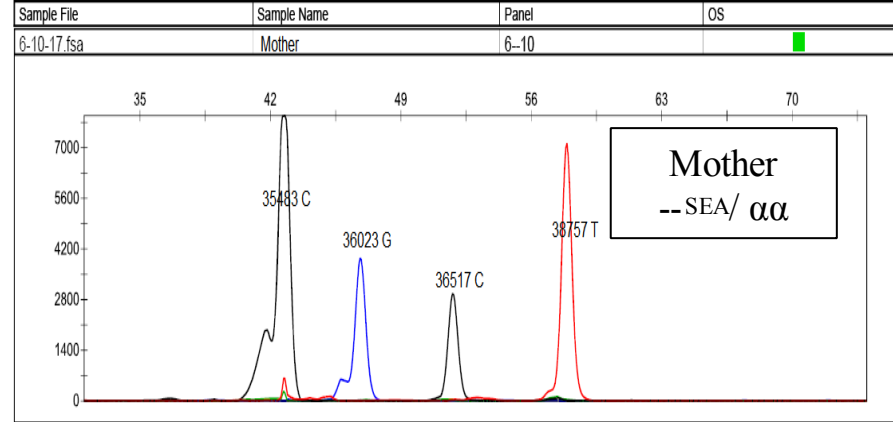
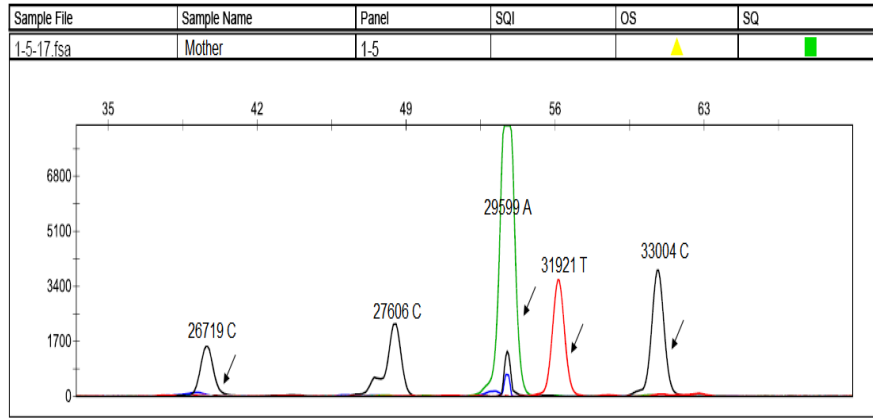
**B**



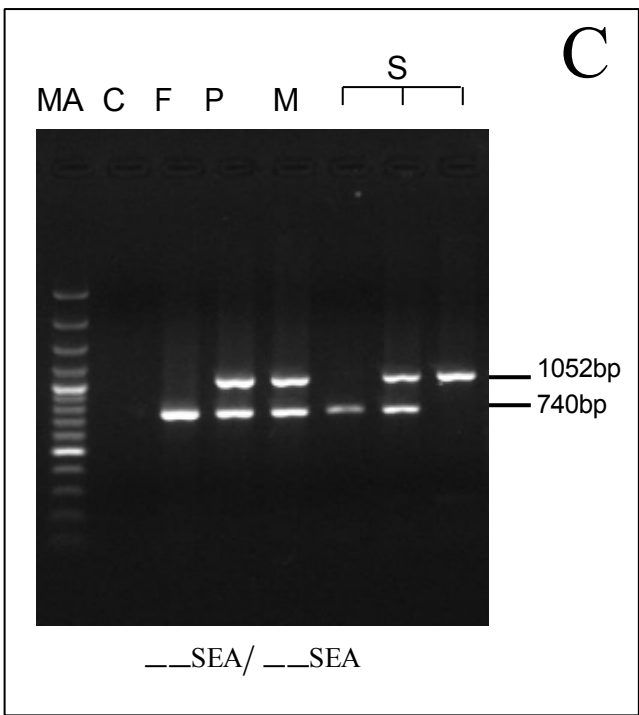
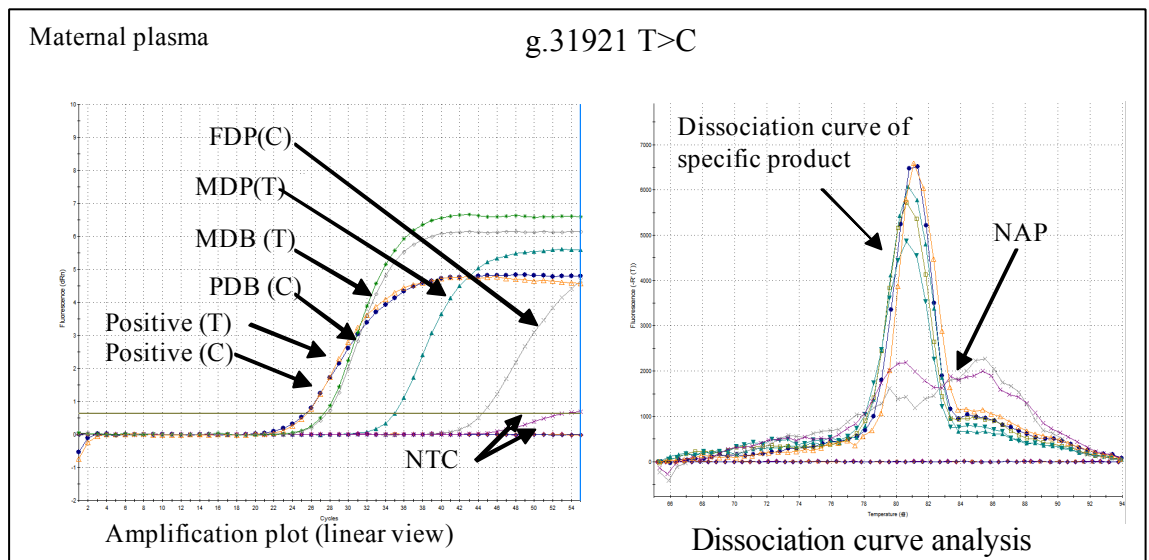
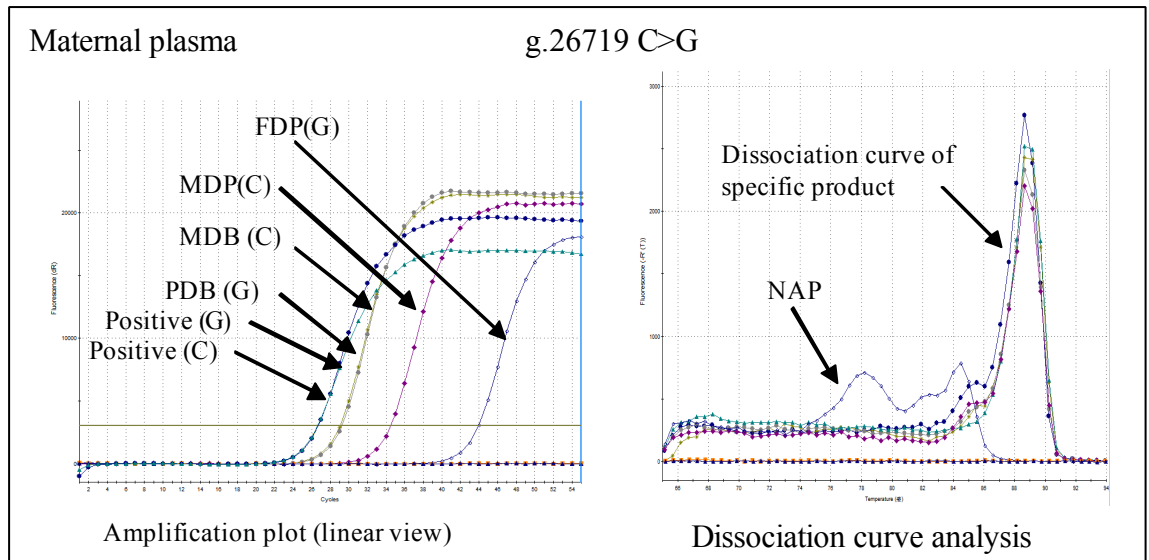
	$C_{T,Maternal}$	$C_{T,Paternal}$	$\Delta C_{T,(P-M)}$
g.29599 A>G	31.52	35.41	3.89
g.36517 A>C	30.96	34.86	3.90

Family 7

A



**B**



	$C_{T,Maternal}$	$C_{T,Paternal}$	$\Delta C_{T,(P-M)}$
g.26719 C>G	34.53	43.97	9.44
g.31921 T>C	34.94	44.41	9.47

## Family 47

Figure S2. Representative NIPD for  $\alpha$ -thalassemia in two families performed using our protocol