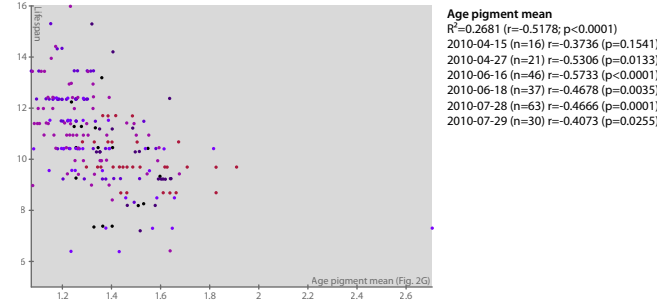
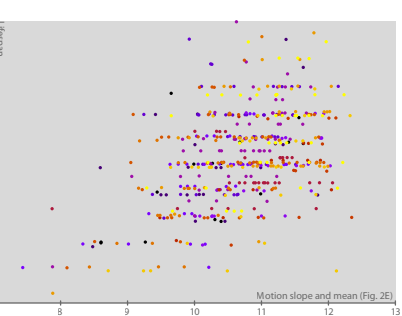


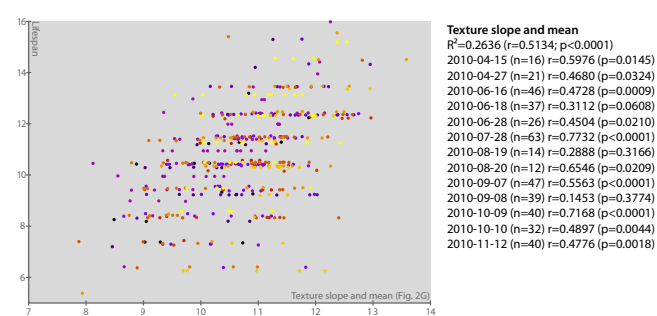
Length slope
 $R^2=0.2730$ ($r=0.5225$; $p<0.0001$)
 2010-04-15 (n=16) $r=0.8561$ ($p<0.0001$)
 2010-04-27 (n=21) $r=0.7932$ ($p<0.0001$)
 2010-06-16 (n=46) $r=0.6324$ ($p<0.0001$)
 2010-06-18 (n=37) $r=0.3921$ ($p=0.0164$)
 2010-06-28 (n=26) $r=0.5067$ ($p=0.0083$)
 2010-07-28 (n=63) $r=0.7301$ ($p<0.0001$)
 2010-07-29 (n=30) $r=0.6025$ ($p=0.0004$)
 2010-08-19 (n=14) $r=0.5127$ ($p=0.0609$)
 2010-08-20 (n=12) $r=0.5756$ ($p=0.0502$)
 2010-09-07 (n=47) $r=0.5488$ ($p<0.0001$)
 2010-09-08 (n=39) $r=0.5323$ ($p<0.0005$)
 2010-10-09 (n=40) $r=0.6662$ ($p<0.0001$)
 2010-10-10 (n=32) $r=0.1631$ ($p=0.3724$)
 2010-11-12 (n=40) $r=0.6016$ ($p<0.0001$)



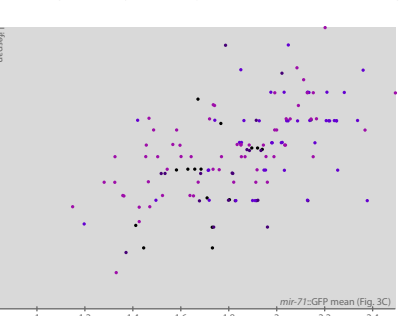
Age pigment mean
 $R^2=0.2681$ ($r=0.5178$; $p<0.0001$)
 2010-04-15 (n=16) $r=0.3736$ ($p=0.1541$)
 2010-04-27 (n=21) $r=0.5306$ ($p=0.0133$)
 2010-06-16 (n=46) $r=0.5733$ ($p<0.0001$)
 2010-06-18 (n=37) $r=0.4678$ ($p=0.0035$)
 2010-07-28 (n=63) $r=0.4666$ ($p=0.0001$)
 2010-07-29 (n=30) $r=0.4073$ ($p=0.0255$)



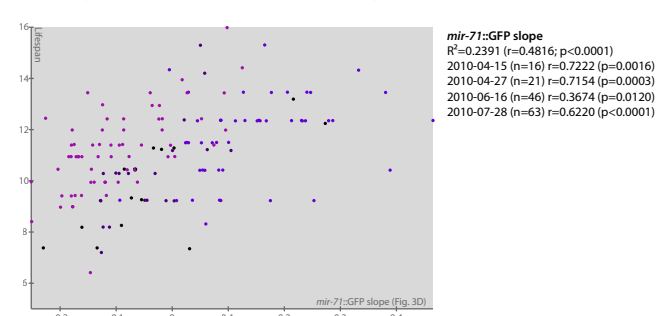
Motion slope and mean
 $R^2=0.2011$ ($r=0.4488$; $p<0.0001$)
 2010-04-15 (n=16) $r=0.6189$ ($p=0.0106$)
 2010-04-27 (n=21) $r=0.4663$ ($p=0.0331$)
 2010-06-16 (n=46) $r=0.2770$ ($p=0.0624$)
 2010-06-18 (n=37) $r=0.6108$ ($p<0.0001$)
 2010-06-28 (n=26) $r=0.6834$ ($p<0.0001$)
 2010-07-28 (n=63) $r=0.5910$ ($p<0.0001$)
 2010-07-29 (n=30) $r=0.0863$ ($p=0.6502$)
 2010-08-19 (n=14) $r=0.5649$ ($p=0.0353$)
 2010-08-20 (n=12) $r=0.3549$ ($p=0.2576$)
 2010-09-07 (n=47) $r=0.3607$ ($p=0.0127$)
 2010-09-08 (n=39) $r=0.5327$ ($p=0.0005$)
 2010-10-09 (n=40) $r=0.5546$ ($p=0.0002$)
 2010-10-10 (n=32) $r=0.4662$ ($p=0.0072$)
 2010-11-12 (n=40) $r=0.3257$ ($p=0.0403$)



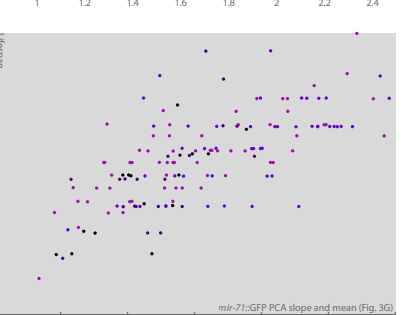
Texture slope and mean
 $R^2=0.2636$ ($r=0.5134$; $p<0.0001$)
 2010-04-15 (n=16) $r=0.5976$ ($p=0.0145$)
 2010-04-27 (n=21) $r=0.4680$ ($p=0.0324$)
 2010-06-16 (n=46) $r=0.4728$ ($p=0.0009$)
 2010-06-18 (n=37) $r=0.3112$ ($p=0.0608$)
 2010-06-28 (n=26) $r=0.4504$ ($p=0.0210$)
 2010-07-28 (n=63) $r=0.7732$ ($p<0.0001$)
 2010-08-19 (n=14) $r=0.2888$ ($p=0.3166$)
 2010-08-20 (n=12) $r=0.6546$ ($p=0.0209$)
 2010-09-07 (n=47) $r=0.5563$ ($p<0.0001$)
 2010-09-08 (n=39) $r=0.1453$ ($p=0.3774$)
 2010-10-09 (n=40) $r=0.7168$ ($p<0.0001$)
 2010-10-10 (n=32) $r=0.4897$ ($p=0.0044$)
 2010-11-12 (n=40) $r=0.4776$ ($p=0.0018$)



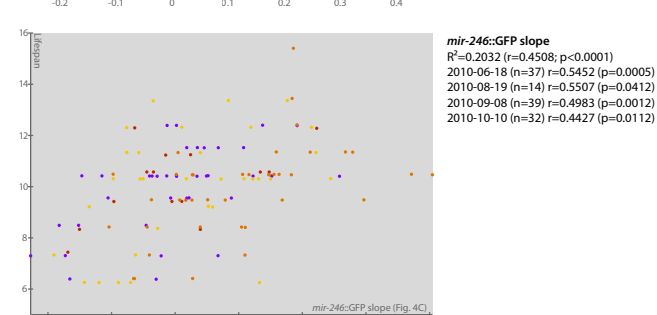
mir-71::GFP mean
 $R^2=0.3199$ ($r=0.5656$; $p<0.0001$)
 2010-04-15 (n=16) $r=0.5510$ ($p=0.0270$)
 2010-04-27 (n=21) $r=0.3472$ ($p=0.1230$)
 2010-06-16 (n=46) $r=0.4296$ ($p=0.0029$)
 2010-07-28 (n=63) $r=0.6617$ ($p<0.0001$)



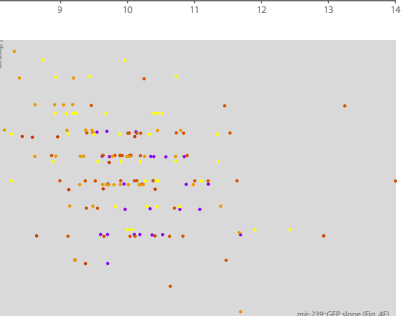
mir-71::GFP slope
 $R^2=0.2391$ ($r=0.4816$; $p<0.0001$)
 2010-04-15 (n=16) $r=0.7222$ ($p=0.0016$)
 2010-04-27 (n=21) $r=0.7154$ ($p=0.0003$)
 2010-06-16 (n=46) $r=0.3674$ ($p=0.0120$)
 2010-07-28 (n=63) $r=0.6220$ ($p<0.0001$)



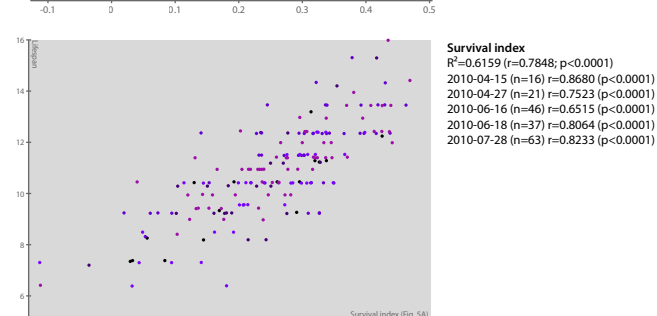
mir-71::GFP PCA slope and mean
 $R^2=0.4746$ ($r=0.6889$; $p<0.0001$)
 2010-04-15 (n=16) $r=0.7746$ ($p=0.0004$)
 2010-04-27 (n=21) $r=0.6530$ ($p=0.0013$)
 2010-06-16 (n=46) $r=0.5234$ ($p=0.0002$)
 2010-07-28 (n=63) $r=0.7525$ ($p<0.0001$)



mir-246::GFP slope
 $R^2=0.2032$ ($r=0.4508$; $p<0.0001$)
 2010-06-18 (n=37) $r=0.5452$ ($p=0.0005$)
 2010-08-19 (n=14) $r=0.5507$ ($p=0.0412$)
 2010-09-08 (n=39) $r=0.4983$ ($p=0.0012$)
 2010-10-10 (n=32) $r=0.4427$ ($p=0.0112$)



mir-239::GFP slope
 $R^2=0.0976$ ($r=0.3124$; $p<0.0001$)
 2010-06-28 (n=26) $r=-0.1411$ ($p=0.4917$)
 2010-08-20 (n=12) $r=-0.4012$ ($p=0.1961$)
 2010-09-07 (n=47) $r=0.0924$ ($p=0.5367$)
 2010-10-09 (n=40) $r=-0.6277$ ($p<0.0001$)
 2010-11-12 (n=40) $r=-0.4429$ ($p=0.0042$)



Survival index
 $R^2=0.6159$ ($r=0.7848$; $p<0.0001$)
 2010-04-15 (n=16) $r=0.8680$ ($p<0.0001$)
 2010-04-27 (n=21) $r=0.7523$ ($p<0.0001$)
 2010-06-16 (n=46) $r=0.6515$ ($p<0.0001$)
 2010-06-18 (n=37) $r=0.8064$ ($p<0.0001$)
 2010-07-28 (n=63) $r=0.8233$ ($p<0.0001$)