

Supplementary information

- S1 Enlarged images from figure 1B.
- S2 Example of immunohistochemical controls
- S3 Example of ex-vivo imaging of organ involvement with mets
- S4 Quantification of mets in mice bearing MCF-7TR/Luc/Trask tumors
- S4 Example of necropsy analysis of peritoneal dissemination

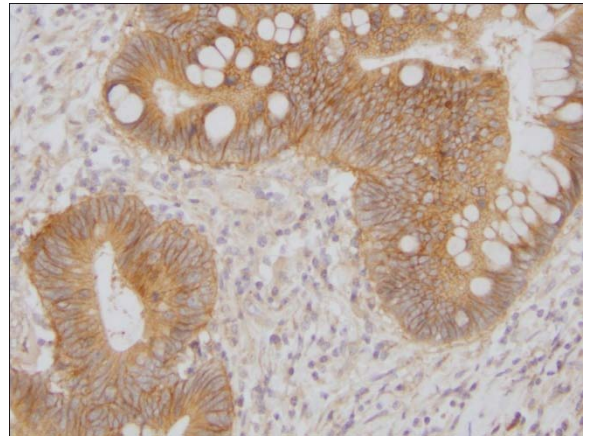
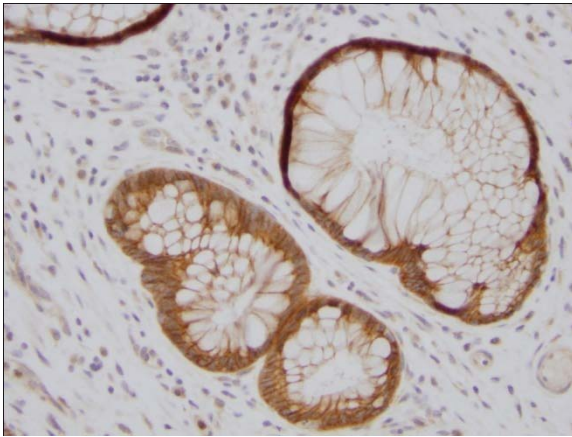
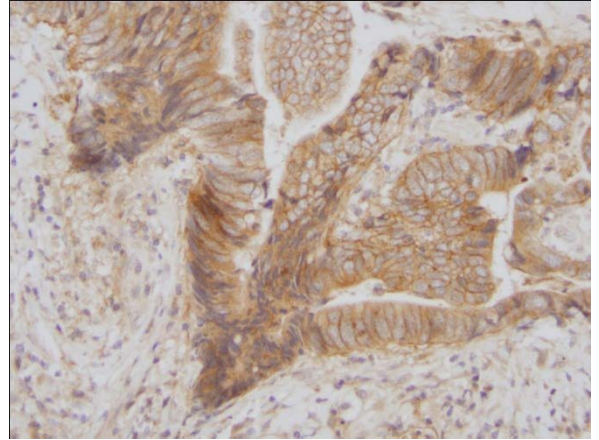
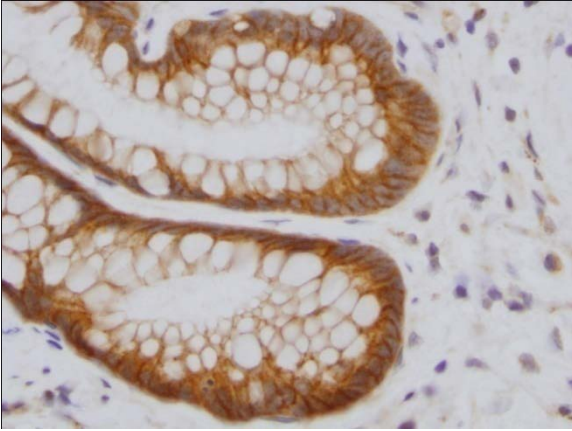
S1

case

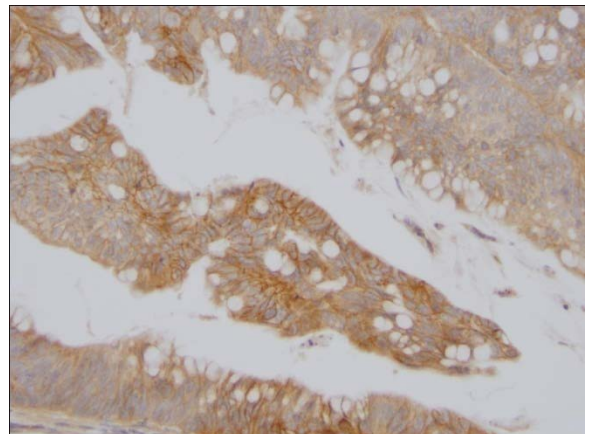
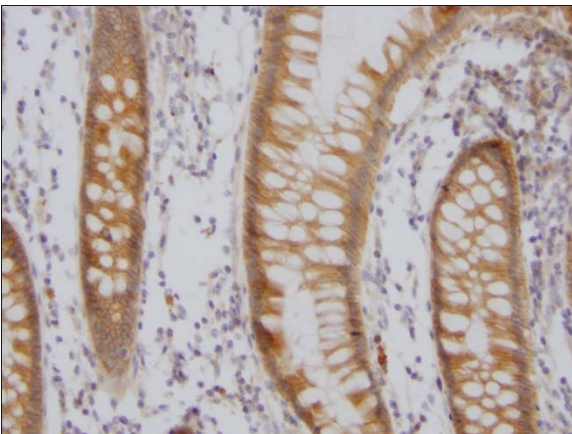
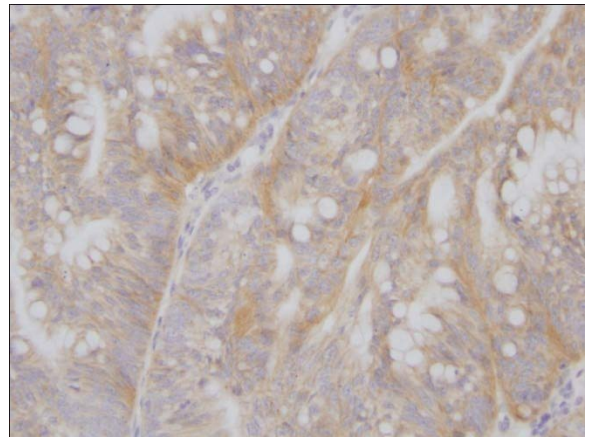
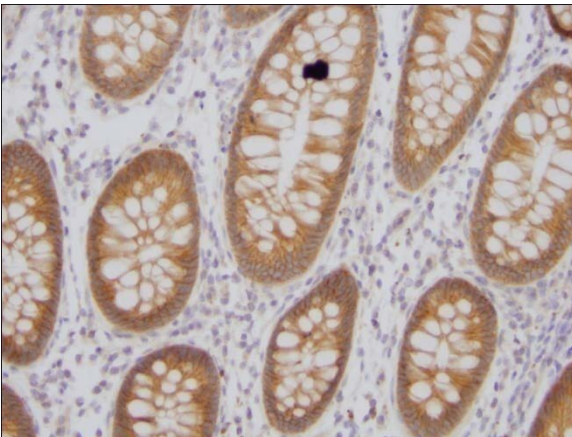
normal colon

invasive carcinoma

1



2



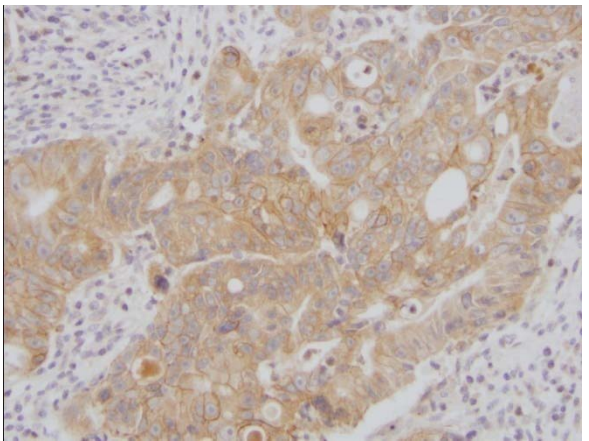
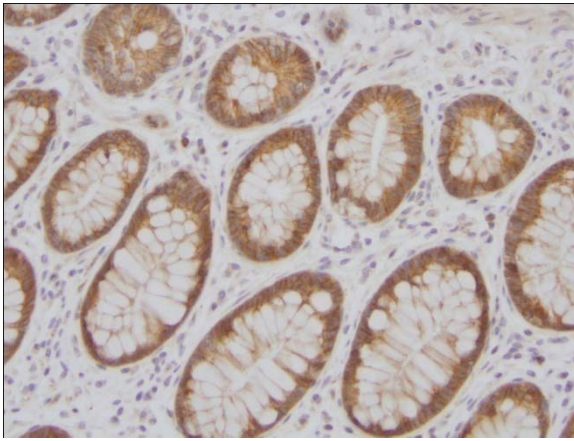
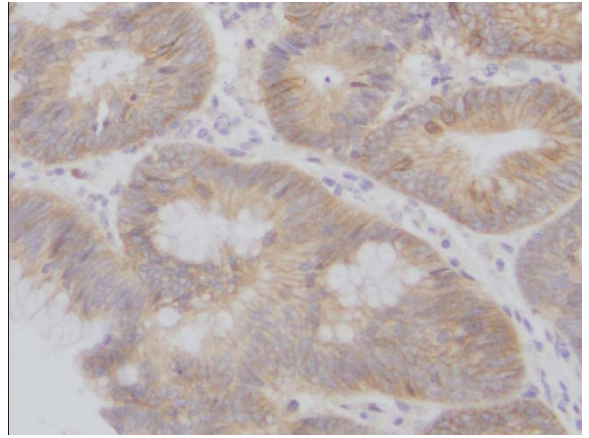
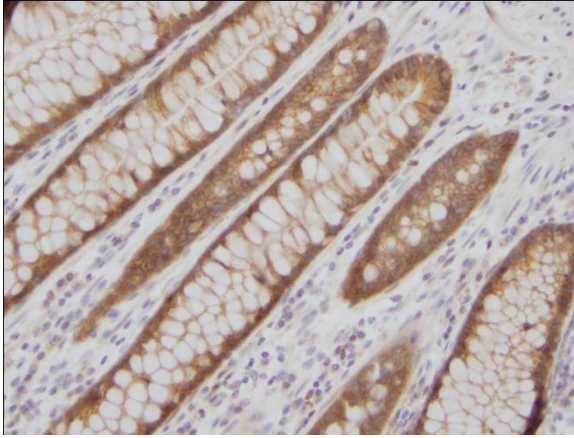
S1

case

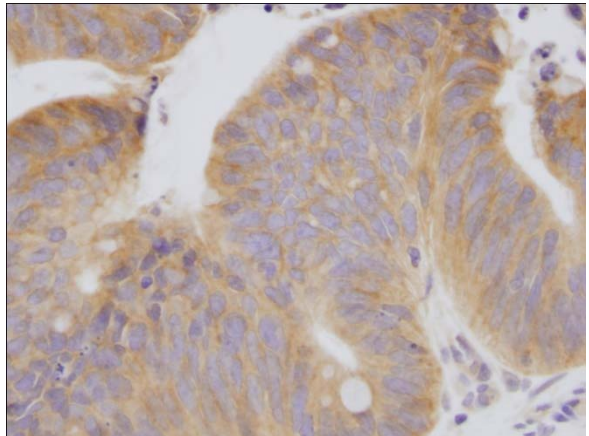
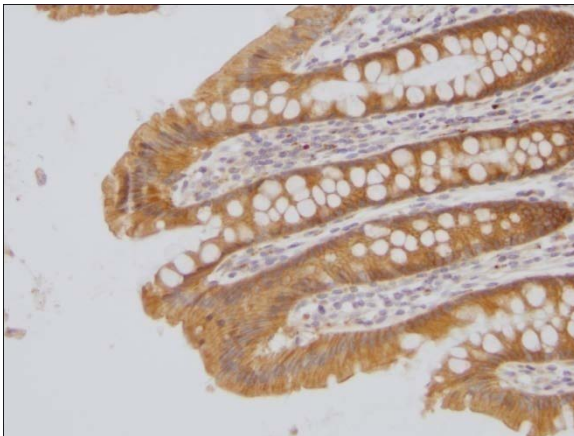
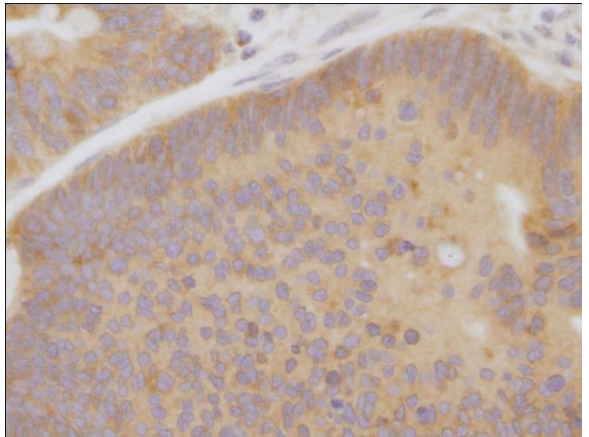
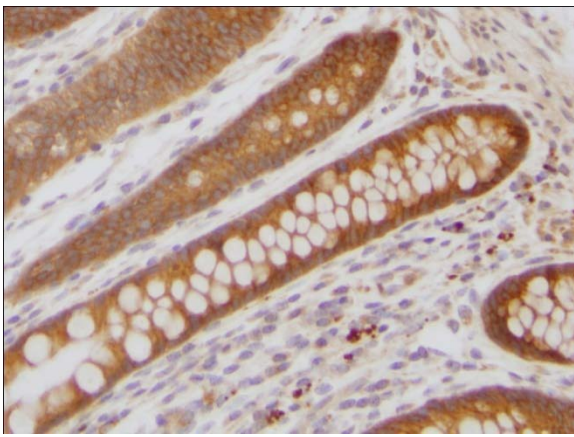
normal colon

invasive carcinoma

3



4



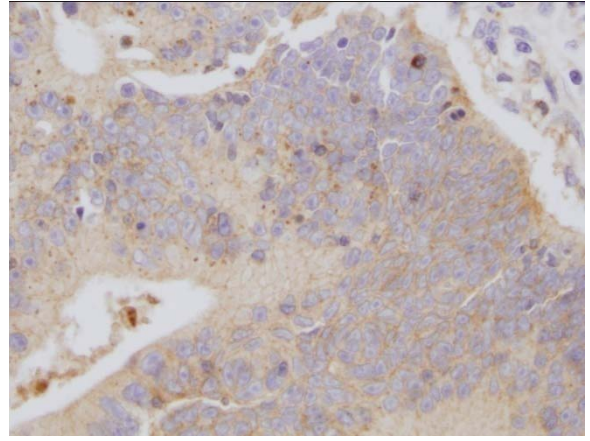
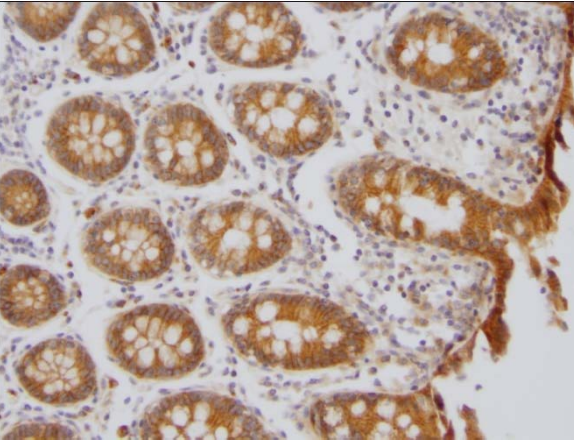
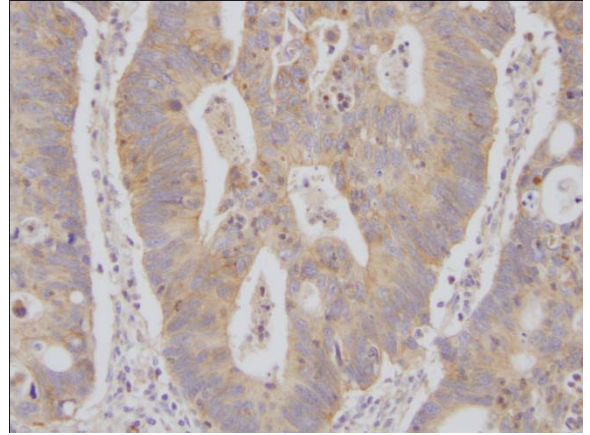
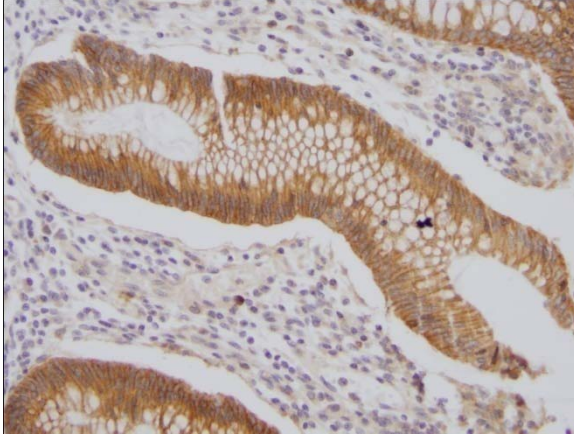
S1

case

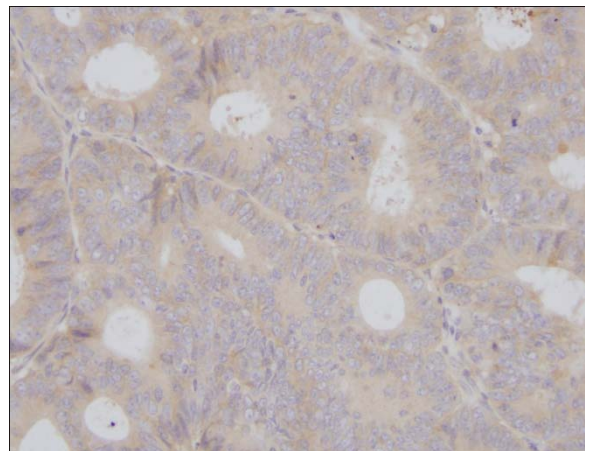
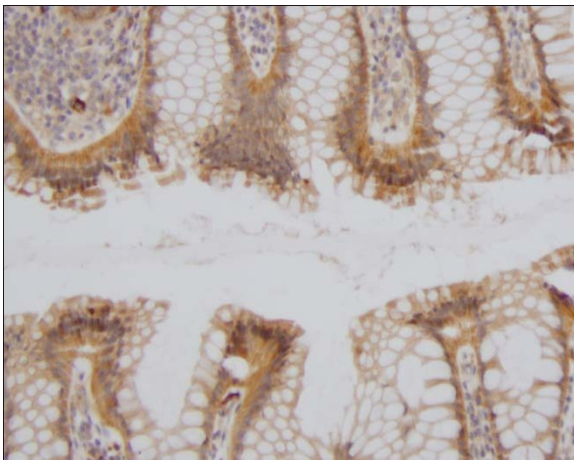
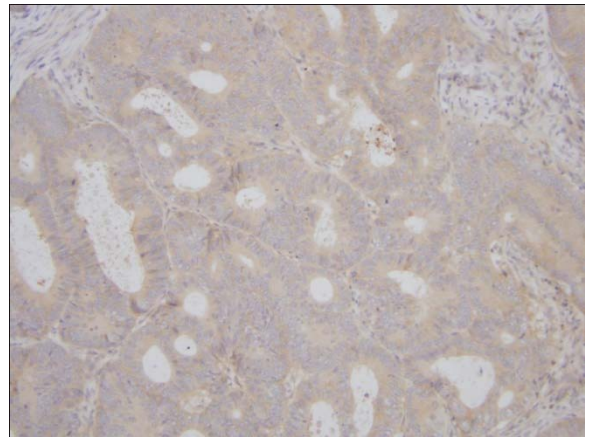
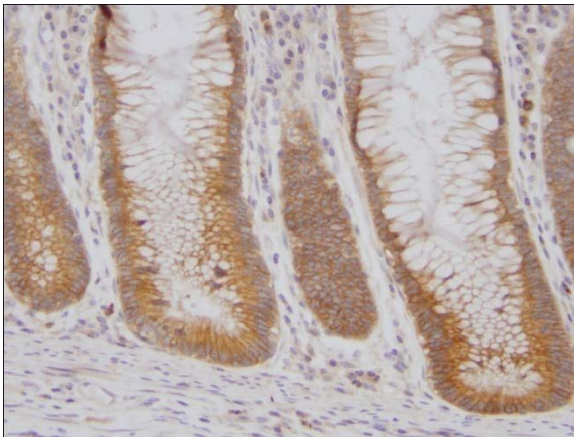
normal colon

invasive carcinoma

5



6



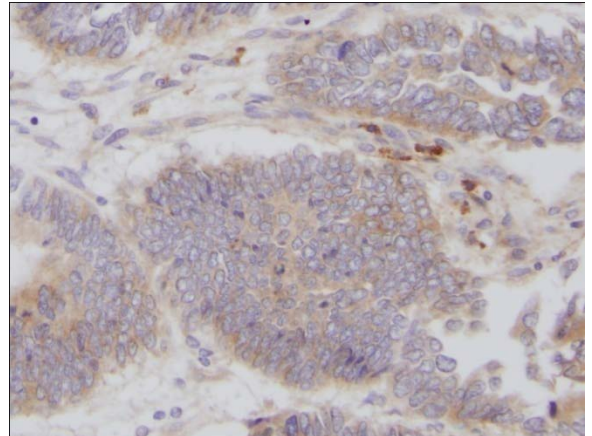
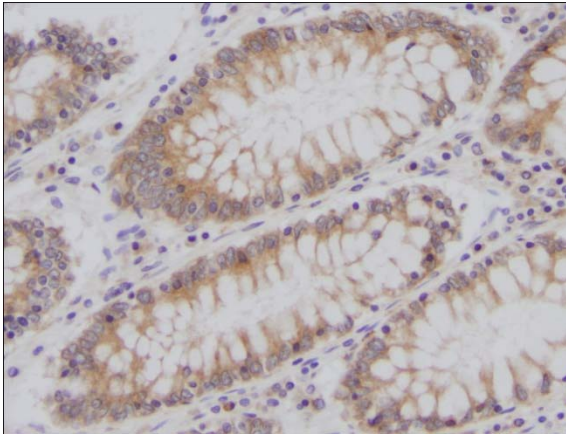
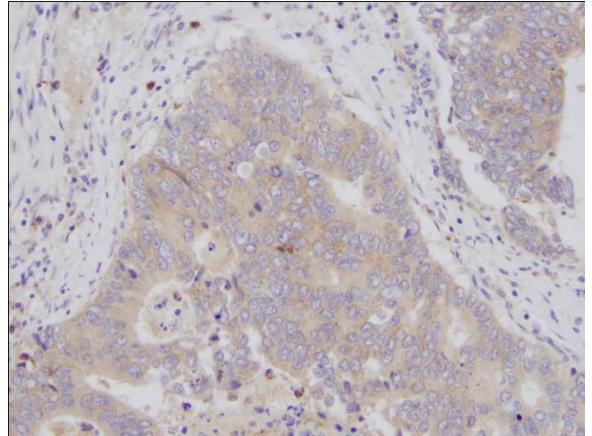
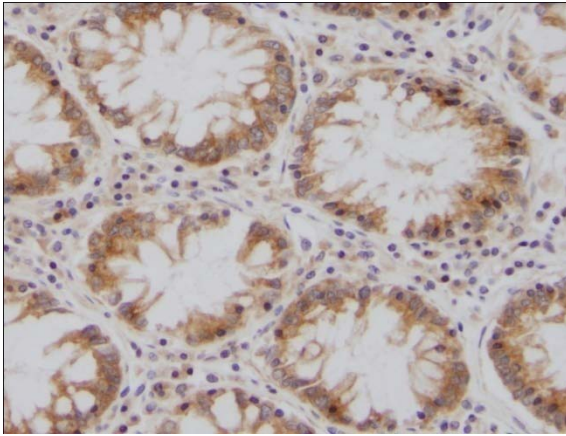
S1

case

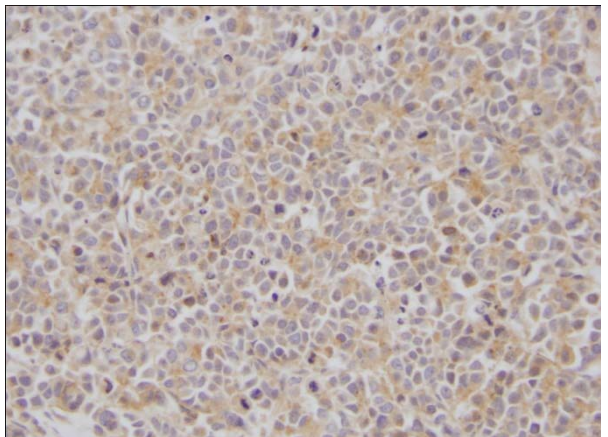
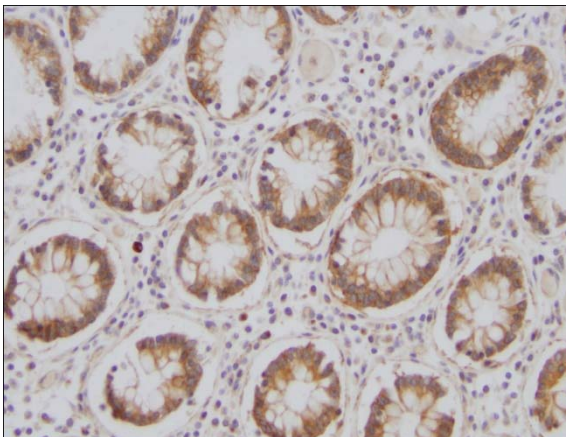
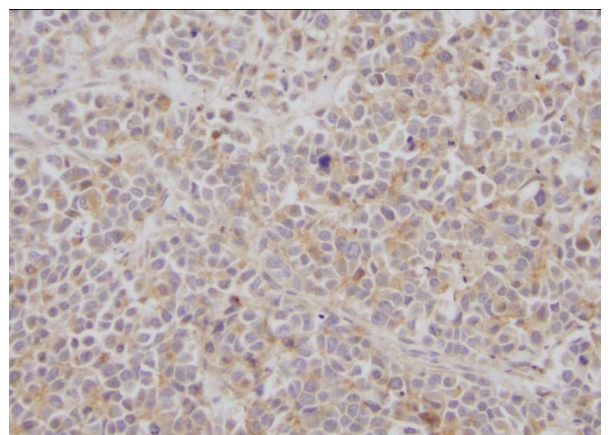
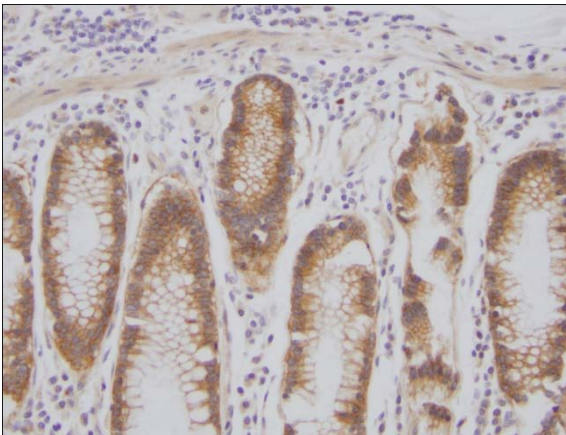
normal colon

invasive carcinoma

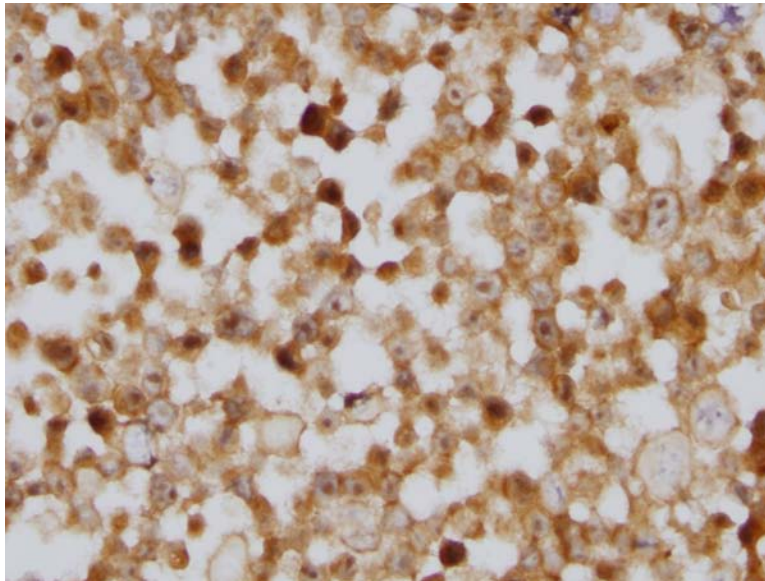
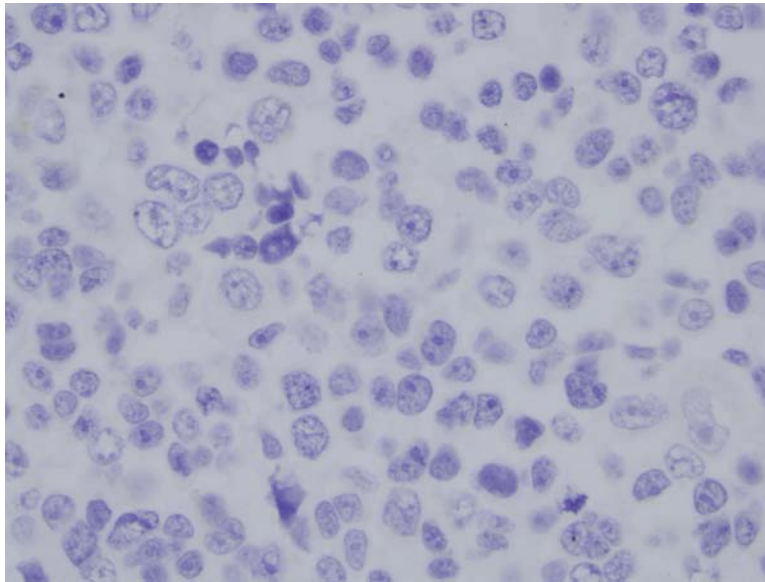
7



8

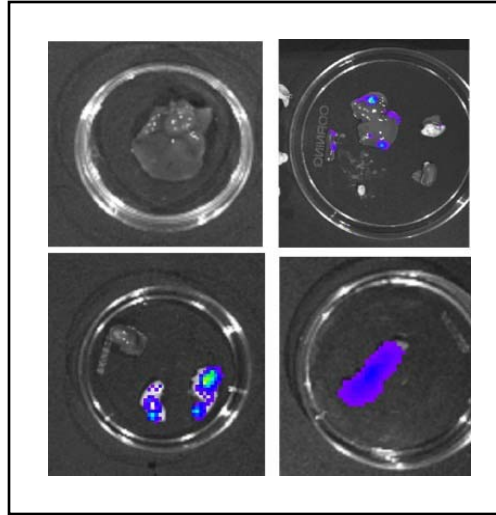


S2



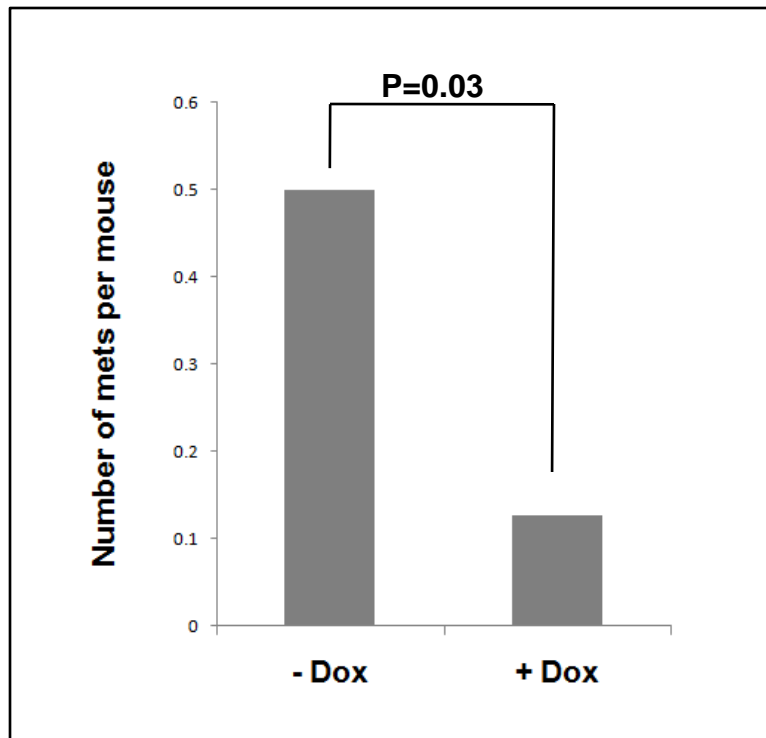
Shown here are negative and positive controls used in our immunohistochemical studies. The negative control (above) was MCF-7 cells and the positive control (below) was MDA-468 cells which were pelleted, fixed in formalin, and embedded in paraffin. Sections from these controls were run side-by-side with every immunohistochemical staining study.

S3



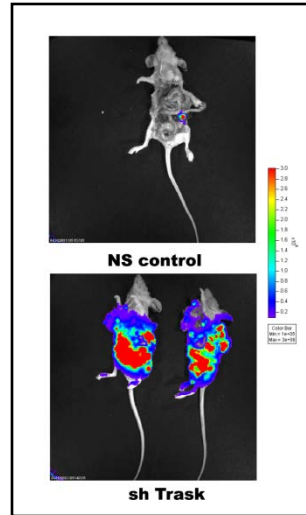
Example of ex-vivo imaging of organ involvement at necropsy in mice bearing orthotopic MCF-7TR/Luc/Trask tumors

S4



Quantification of tumor metastases in mice bearing MCF-7TR/Luc/Trask tumors comparing the number of mets per mouse.

S5



Example of necropsy imaging of peritoneal dissemination post-pancreatectomy in mice bearing orthotopic L3.6pl-shTrask tumors. Peritoneal dissemination was confirmed histologically by sampling peritoneal metastatic nodules in many of the mice. H & E sections are shown below.

