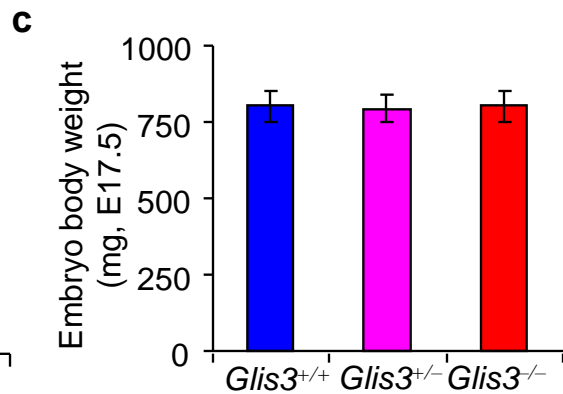
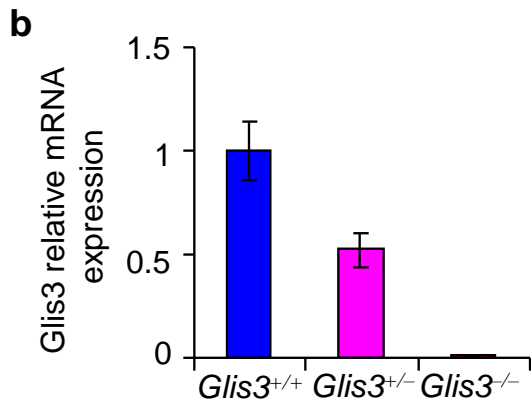
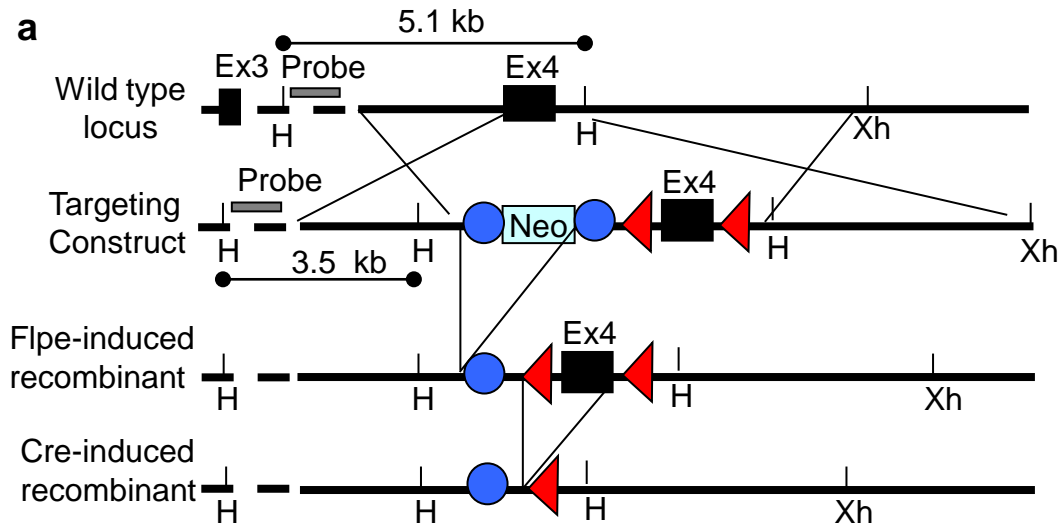
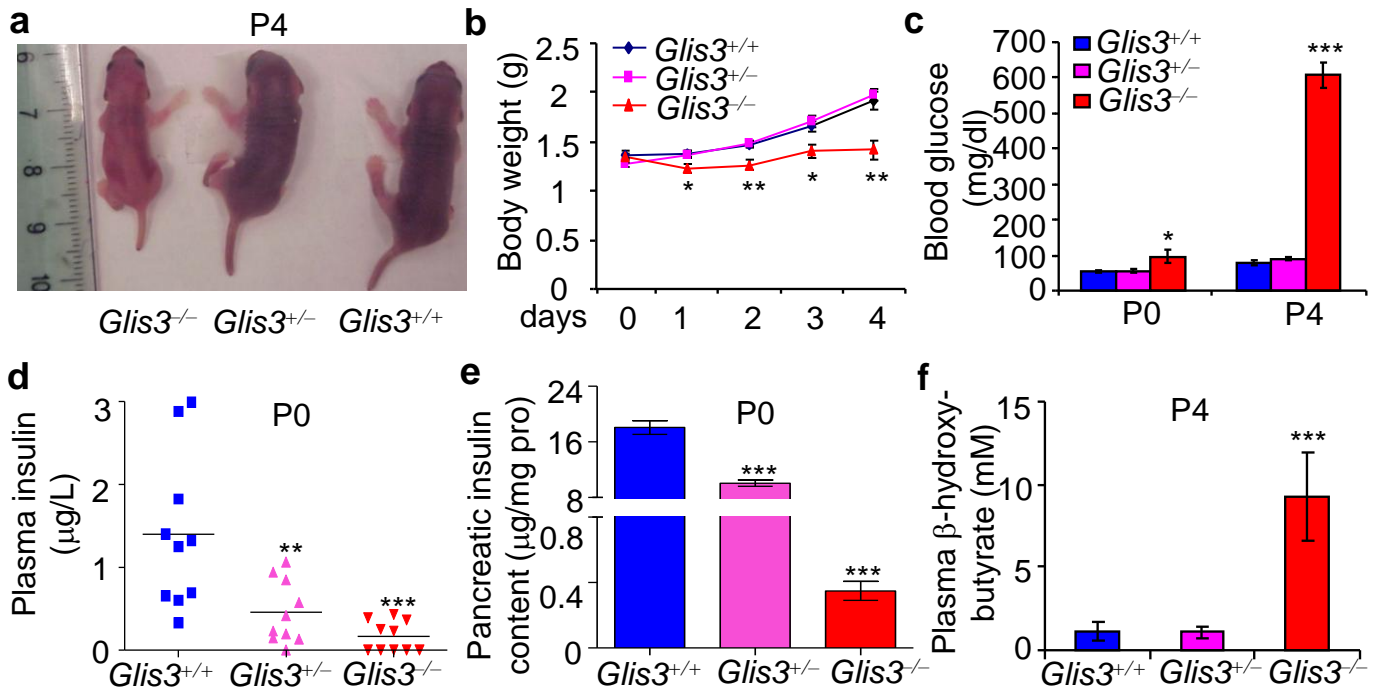


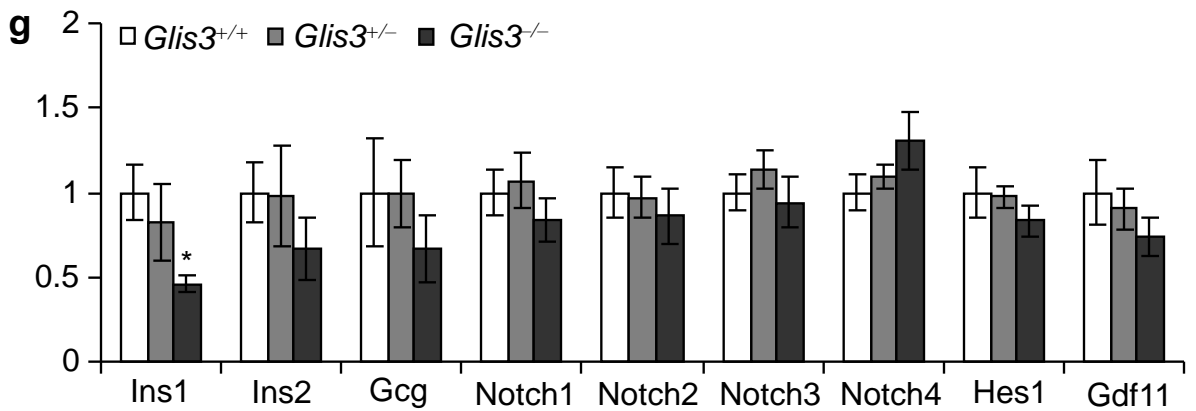
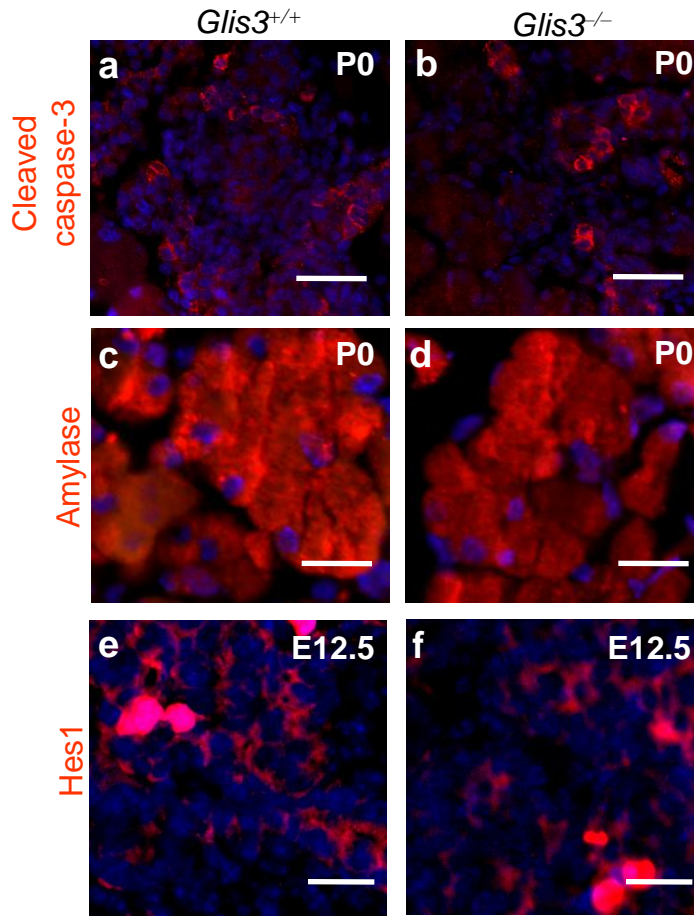
Supplementary Figure 1



Supplementary Figure 2



Supplementary Figure 3



Supplementary Table 1. Body weight and pancreas weight of neonatal (P0) *Glis3*^{+/+}, *Glis3*^{+/-} and *Glis3*^{-/-} mice

	<i>Glis3</i> ^{+/+} (n=11)	<i>Glis3</i> ^{+/-} (n=21)	<i>Glis3</i> ^{-/-} (n=11)
Body weight (mg)	1312.6±106.4	1313.7±115.1	1311.1±98.3
Pancreas weight (mg)	7.0±0.8	7.6±1.4	6.4±0.8
PW/BW	0.0054±0.0007	0.0058±0.0009	0.0049±0.0006

Supplementary Table 2. The sequences of qPCR primers and EMSA probe

Target	Forward	Reverse
q-RT-PCR		
<i>mGlis3</i>	CAGTCCTAGCTTACCGAGG	CTGGGAAGTGTGGCTGGATG
<i>mNeurog3</i>	GTCGGGAGAACTAGGATGGC	GGAGCAGTCCCTAGGTATG
<i>mIns1</i>	GGAGCGTGGCTTCTTCTACA	GGTGGGCCTTAGTTGCAGTA
<i>mIns2</i>	TTTGTCAAGCAGCACCTTTG	TCTACAATGCCACGCTTCTG
<i>mGlucagon</i>	AGGAAGGCGAGACTTCCCAG	CCCAAGTGAAGTGGCAGG
<i>mSox9</i>	TCCGGCATGAGTGAGGTGC	CGTCGCTGCTCAGTTCACC
<i>mHnf1b</i>	CTTCATGGCCGCGGTGACTC	GGGTCCTTGTTGCTGTGCAC
<i>mHes1</i>	GACTGTGAAGCACCTCCG	TGGGTCATGCAGTTGGCCAG
<i>mGdf11</i>	GAGGACGAGTACCACGCTAC	GATCTGCAGGTAGACTGTGGC
<i>mNotch1</i>	GTCGGCTTTGCATTGGGCGG	TCCCGCGGCAATCGGTCCAT
<i>mNotch2</i>	TGTGGAGGCGACTCTTCTGC	CAGGAGGCGAACGATGTC
<i>mNotch3</i>	ATGCCCGAATGGCAGATGGC	TCAGCAGAGCCAAGGTAGCC
<i>mNotch4</i>	AACTGCACTGCACTGGGCCG	CTCCAGCAACAGCTGCGCCA
<i>mHnf6</i>	TTCGGACCTGCTGCGAAAC	ACGTCTGTGAAGACCAGCC
<i>mFoxa2</i>	TGGAAGGGCACGAGCCATCC	CATTCCAGCGCCCACATAGG
<i>rmPdx1</i>	CTTCCCGAATGGAACCGAG	GAATTCCTTCTCCAGCTCC
<i>rmNeuroD1</i>	GGCTCCAGGGTTATGAGATC	GCATTCATGGCTTCAAGC
<i>rmNkx6-1</i>	CTATTCTCTGGGGATGACGG	TCTCGTCGTCAGAGTTCGGGTC
<i>rmIsl1</i>	CAGATGCGCTCATGAAGGAG	AGCAGCCACCATGGGAGTTC
<i>rmCyclophilin A</i>	CTGTTTGCAGACAAAGTTCCA	AGGATGAAGTTCTCATCCTCA
ChIP-q-PCR		
<i>mNeurog3</i> (-4692)	AGGAGAGGGACATATGGGC	GTTTGTCCCAGCGTCTGG
<i>mNeurog3</i> (-2862)	CTCCAGGCTTCTGGCTGTCCG	CCTGTTTTTACAGCGAGGGG
<i>mNeurog3</i> (-2718)	ATTGGCACGCACTGCGCAG	GAGGCCAAGCTGAATGCCCG
<i>mNeurog3</i> (-1640)	CCCCACCCAATCCTACCAC	GGCGTAGAGTCAGGGTCGG
<i>mNeurog3</i> (-1117)	ACAAGAAGGGCGGGTCTGCA	CACTCCTGAACTGTGGGTG
<i>mNeurog3</i> (+7963)	CACACTCTCTGCATACGGAG	CGTTCCTCCAACTGGGCTG

Supplementary Table 2. The sequences of qPCR primers and EMSA probe (*Continued*)

EMSA probe	
<i>mNeurog3</i> (-4692)	GCATCTGTGTCCCCAGTTGCAGTTTCTGTG
<i>mNeurog3</i> (-2862)	GGATGGATGACCCCTCGCTGTAAAAACAGG
<i>mNeurog3</i> (-2718)	AGGGATCTGTGAGTCCCCTGCAGCTAAGGGAGAGGTTGTG
<i>mNeurog3</i> (-1640)	ATCCTACCACCTCCCCTCCTGCTGAGTGCC
<i>mNeurog3</i> (-1117)	GAAGTCTCCCTGCCCTGGGCTCACCCACAG