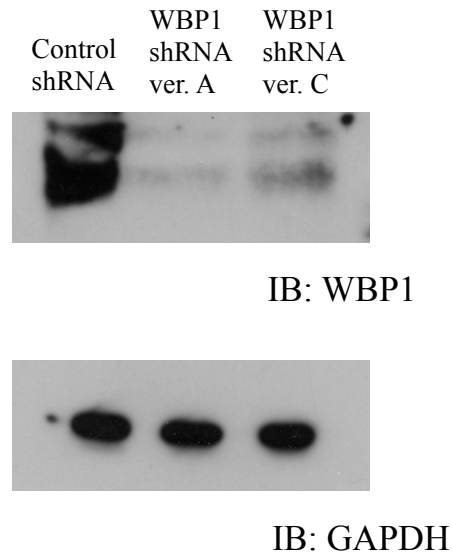
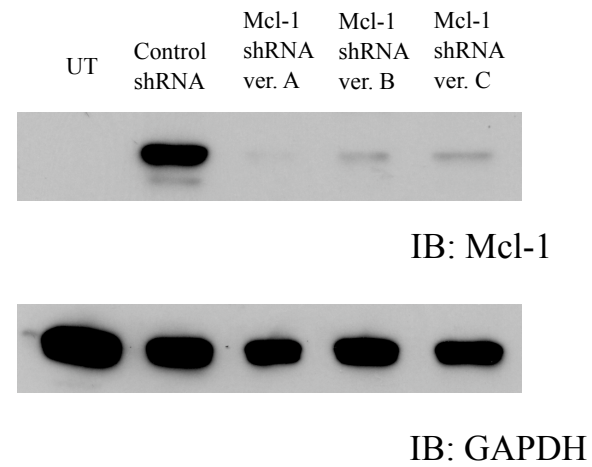


A**B**

Supplemental Figure 2. Efficacy of WBP1 and Mcl-1 shRNAs. *A*, MCF-7 cells grown in a 10-cm dish were transfected with shRNAs (2.5 μ g) and WBP1-GFP (2.5 μ g). At 24 h post-transfection, cells were harvested and lysed for Western blot analysis. shRNAs specific for WBP1 (versions A and C) effectively blocked expression. *B*, MCF-7 cells were transfected with shRNAs (2.5 μ g) and pcDNA3.1-based Mcl-1 cDNA (2.5 μ g). UT, untreated.