

Supplementary Figure legends

Figure S1. The majority of CD4⁺CD25⁺ T cells are Foxp3⁺ before and after irradiation.

Representative FACS patterns of intracellular staining of Foxp3 among CD4⁺CD25⁺ gated splenocytes in untreated and 24 hrs after TBI 1,000 cGy wild type C57BL/6 mice. The data are representative of two independent experiments.

Figure S2. Effect of graded doses of irradiation on different T cell subsets in wild type mice.

Gated TCR $\alpha\beta$ ⁺ spleen cells in untreated mice and 24 hours after TBI in wild type C57BL/6 mice were analyzed for CD4 versus CD8, NK1.1 versus TCR $\alpha\beta$ and CD44 versus TCR $\alpha\beta$. CD4⁺ TCR $\alpha\beta$ ⁺ spleen cells were stained for CD4 versus CD25 also. The data are representative of three independent experiments

Figure S3. Marked increase of CD44 expression in CD4⁺ CD25⁺ T cells that survive after TBI.

Splenocytes were harvested from untreated wild type mice or from mice 24 hours after 1,000 cGy TBI. Left panels show CD4 versus CD25 on gated TCR $\alpha\beta$ ⁺ cells; right panels show CD44 expression amongst gated CD4⁺ CD25⁺ T cells. The data are representative of three independent experiments.

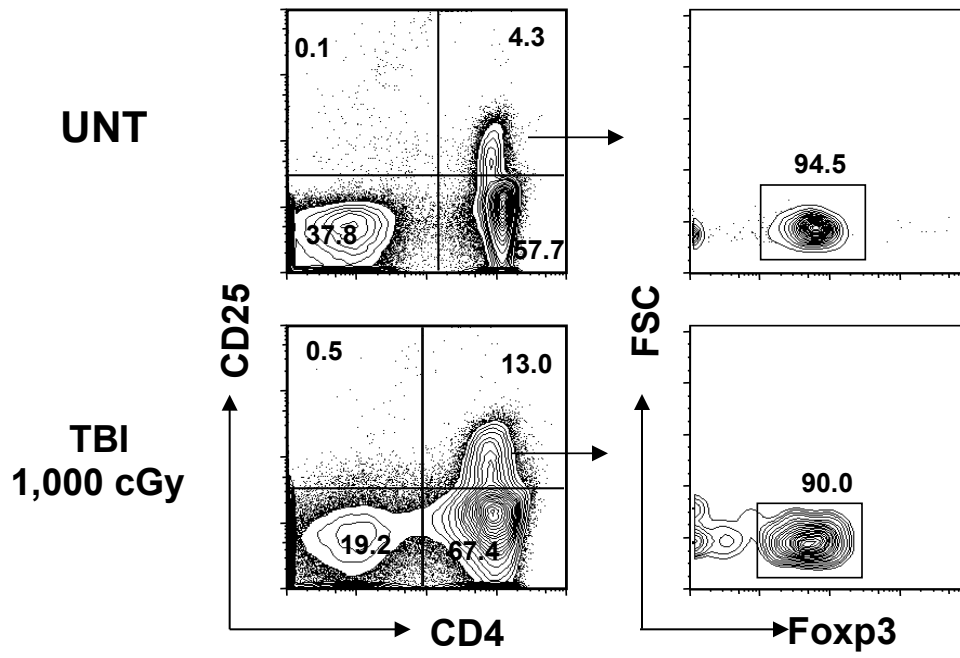


Figure S1

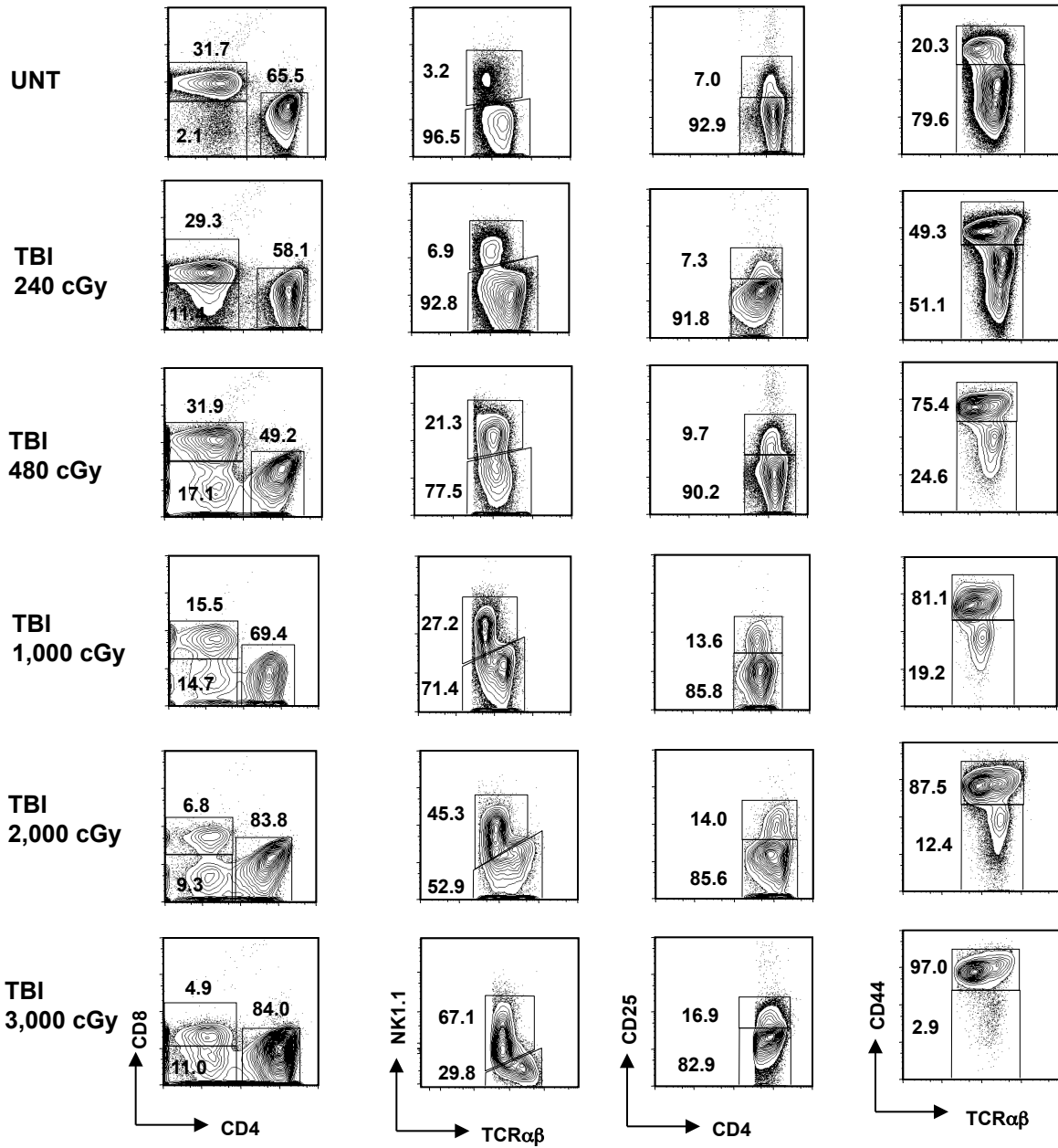


Figure S2

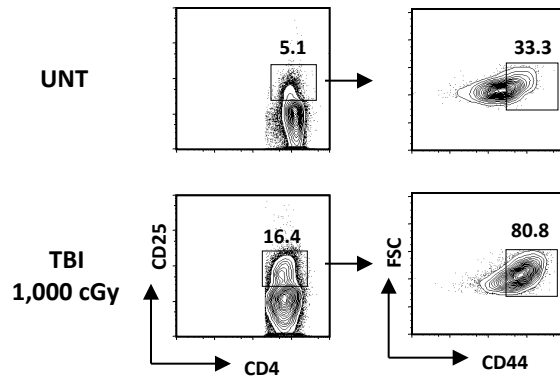


Figure S3