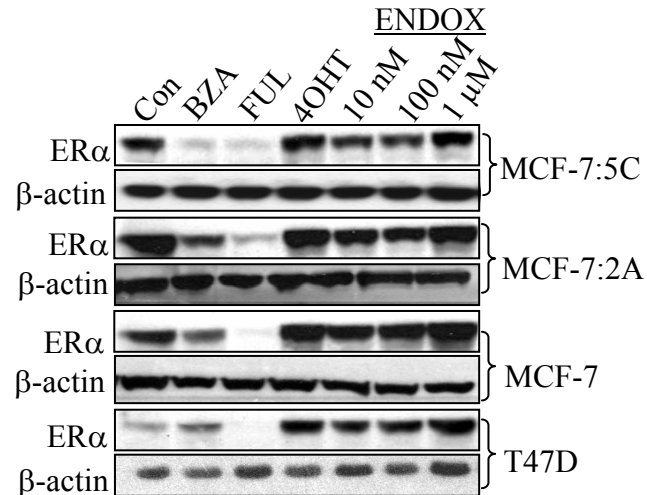


Supplemental Figure 2



The Selective Estrogen Receptor Modulator Bazedoxifene Inhibits Hormone-Independent Breast Cancer Cell Growth and Downregulates Estrogen Receptor α and Cyclin D1.

Joan S Lewis-Wambi, Helen Kim, Ramona Curpan, Ronald Grigg, Mohammed A. Sarker, and V. Craig Jordan.
Molecular Pharmacology.

Effect of endoxifen on ER α protein expression in MCF-7:5C, MCF-7, T47D, and MCF-7:2A breast cancer cells. The indicated cells were treated with 0.01, 0.1, and 1 μ M endoxifen for 24 hours and protein lysates were prepared and analyzed for ER α expression. For comparison, cells were also treated with 1 μ M BZA, FUL, or 4OHT for a similar time point. β -actin was used as an internal control to verify equal protein loading. Each blot is representative of 3 independent experiments and from a single exposure.