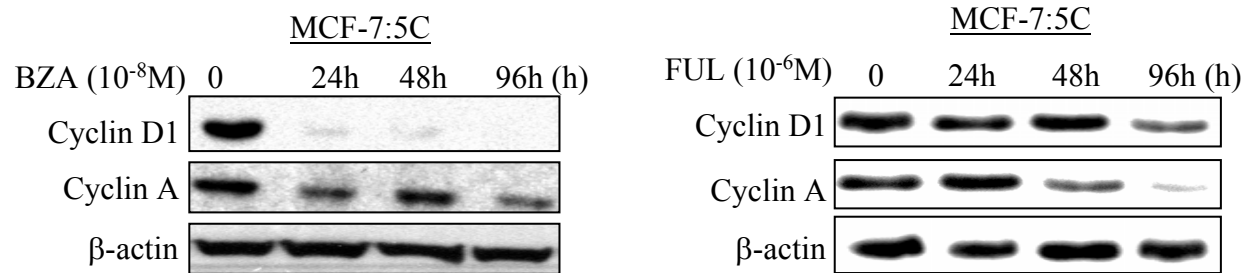


Supplemental Figure 3



The Selective Estrogen Receptor Modulator Bazedoxifene Inhibits Hormone-Independent Breast Cancer Cell Growth and Downregulates Estrogen Receptor α and Cyclin D1.

Joan S Lewis-Wambi, Helen Kim, Ramona Curpan, Ronald Grigg, Mohammed A. Sarker, and V. Craig Jordan.

Molecular Pharmacology

Effect of BZA and FUL on cyclin protein expression in

MCF-7:5C cells. Cells were treated with either 10⁻⁸ M BZA or 10⁻⁶ M FUL for 24, 48, and 96 hours and protein lysates were prepared and analyzed for cyclin D1 and cyclin A protein expression. β -actin was used as an internal control to verify equal protein loading. Each blot is representative of 3 independent experiments and from a single exposure.