

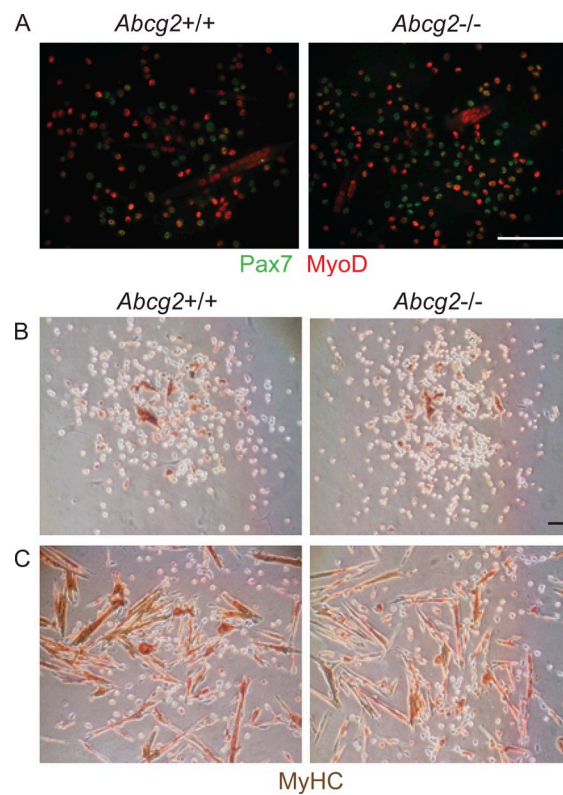
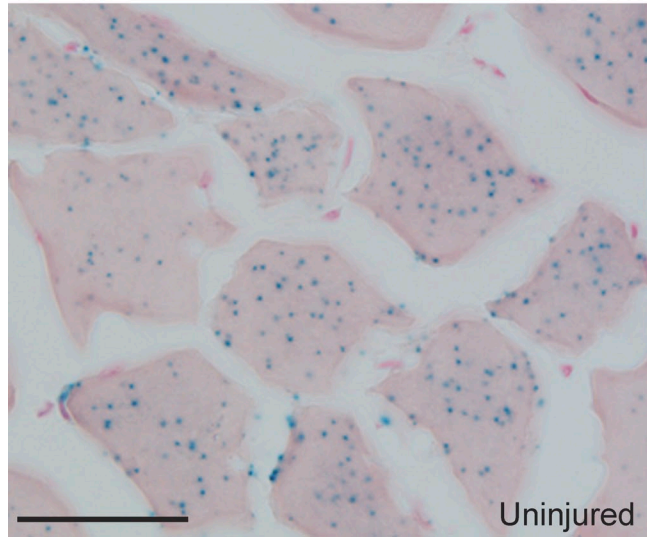
Doyle et al., <http://www.jcb.org/cgi/content/full/jcb.201103159/DC1>

Figure S1. **Satellite cell cultures from *Abcg2*^{-/-} mice show no defects.** Primary cells were isolated from hind-limb muscles of wild-type and *Abcg2*^{-/-} cells, preplated overnight, and cultured for 3–5 d. (A) Primary cells harvested after 3 d in culture were stained with Pax7 and MyoD. Bar, 50 μ m. (B and C) Cells cultured for 3 d (B) or 5 d (C) were stained with myosin heavy chain (MyHC). Bar, 100 μ m. $n = 3$ independent experiments.

A *Actin^{CreERT2};R26R*



B *Abcg2^{CreERT2};R26R*

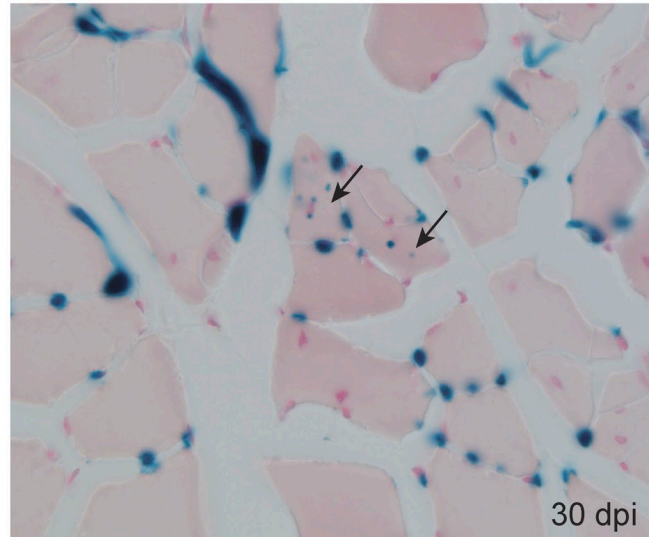


Figure S2. **Punctate X-gal staining is detected in myofibers of *Actin^{CreERT2};R26R* mice.** (A and B) X-gal staining of tissue sections from *Actin^{CreERT2};R26R* uninjured TA muscle 30 d after tamoxifen treatment (A) and from *Abcg2^{CreERT2};R26R* 30 d postinjury (dpi) TA muscle injured during tamoxifen treatment (B). Arrows indicate two fibers with punctate β -galactosidase staining. Bar, 50 μ m.