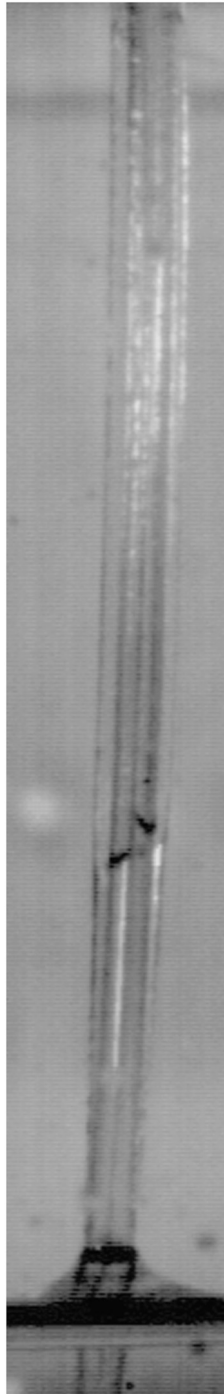


Supporting Information

Kim et al. 10.1073/pnas.1108642108



Movie S1. Nectar rise along a hummingbird's tongue. The tongue is being withdrawn at a speed of approximately 2 cm/s, while the meniscus advances at a speed 9 cm/s in response to capillary suction. The video plays 33 times slower than real time. Video courtesy of Maude Baldwin.

[Movie S1 \(AVI\)](#)



Movie S2. The nectar feeding of a honeybee, whose dipping tongue entrains a 40% sucrose solution. The video plays 10 times slower than real time.

[Movie S2 \(AVI\)](#)