

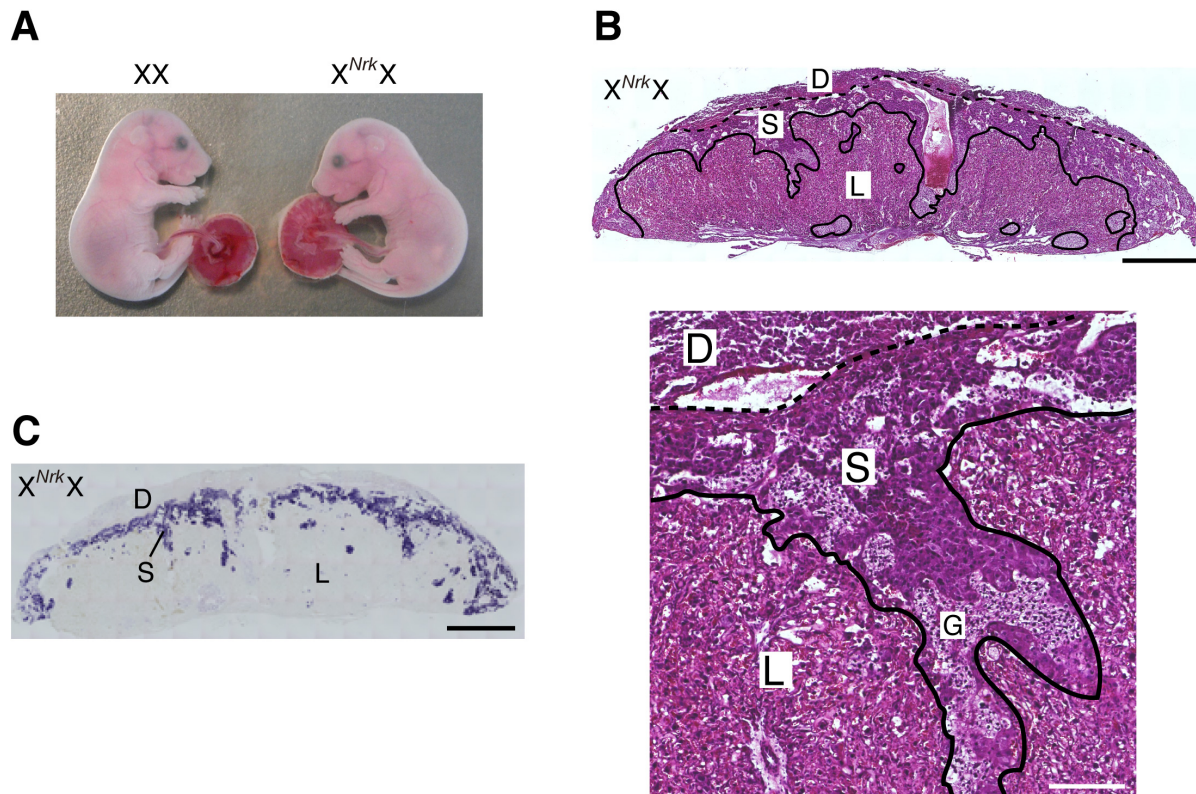
Supplemental Material (Denda et al.)

Supplemental Table 1

Number of offspring derived from $X^{NrK}Y \times XX^{NrK}$ matings at 18.5-19.5 dpc and at weaning

		XY	$X^{NrK}Y$	XX^{NrK}	$X^{NrK}X^{NrK}$
before birth	18.5 or 19.5 dpc	68 (26%)	73 (28%)	60 (23%)	56 (22%)
after birth	19.5 dpc	7 (19%)	10 (28%)	8 (22%)	11 (31%)
	at weaning	109 (46%)	16 (7%)	96 (40%)	19 (8%)

Supplemental Fig. 1

**Histology of $X^{Nr1}X$ placenta**

A. WT (XX) and $X^{Nr1}X$ fetuses and placentas at 18.5 dpc. B. H&E staining of $X^{Nr1}X$ placenta at 18.5 dpc at low (top) and high (bottom) magnification. D, decidual layer; S, spongiotrophoblast layer; L, labyrinth layer; G, glycogen cells in the spongiotrophoblast layer. The three layers are divided by broken and solid lines. C. *In situ* hybridization analysis of *Tpbp-α* mRNA in $X^{Nr1}X$ placenta at 18.5 dpc. Bars, 1 mm (B, top; C) and 200 μm (B, bottom).