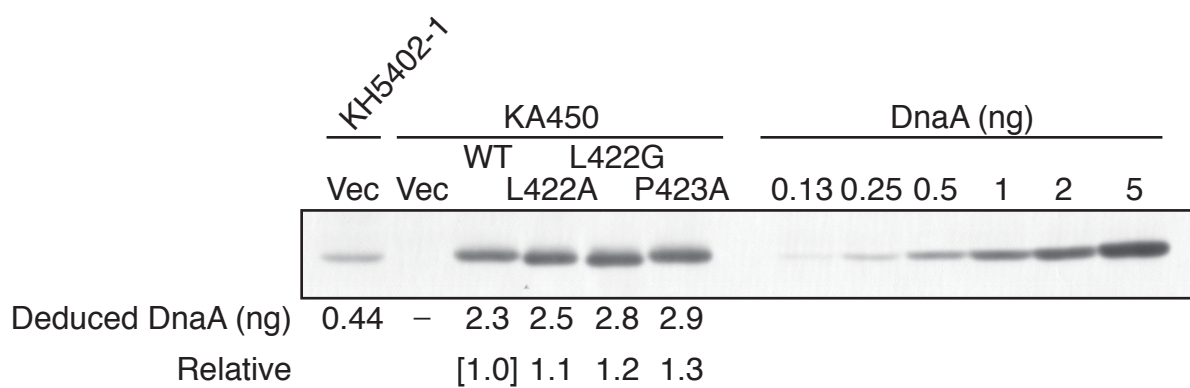


Supplemental Fig. 1



Supplemental Figure Legend

Supplemental Fig. 1. Cellular levels of DnaA mutant proteins. Immunoblot analysis was performed as described previously (1). Briefly, KA450 [*dnaA17* (Am)] cells bearing pING1 (Vec), pKA234 (WT), pL422A (L422A), pL422G (L422G) and pP423A (P423A), and KH5402-1 cells bearing pING1 were exponentially grown at 37°C in LB medium containing thymine (50 µg/ml) and ampicillin (50 µg/ml). Portions of the cultures equivalent to a culture volume of 100 µl at an optical density (A_{660}) of 0.2 were subjected to immunoblot analysis. The indicated amounts of purified DnaA protein were mixed with a whole cell extract from KA450 cells carrying pING as a quantitative standard. Relative ratios of DnaA content of cells carrying the indicated plasmids to those of cells carrying pKA234 are shown.

Reference

1. Keyamura, K., Abe, Y., Higashi, M., Ueda, T., and Katayama, T. (2009) *J. Biol. Chem.* **284**, 25038-25050