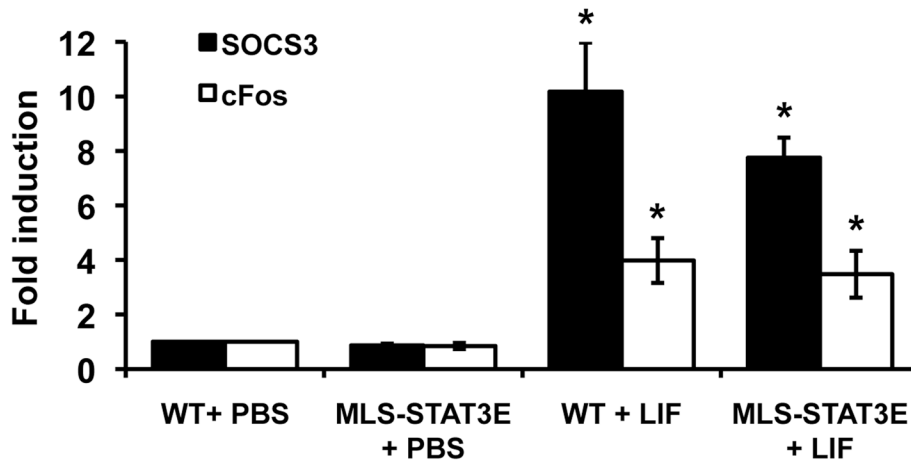


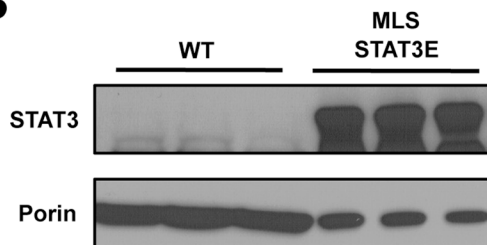
## SUPPLEMENTAL DATA

### Figure S1

#### A



#### B



Supplemental Fig. S1. Over expression of MLS-STAT3E does not affect the transcription of STAT3-dependent genes. **A.** Total RNA was isolated from hearts of mice treated with LIF ( $8 \times 10^4$  U/kg for 1hr) or PBS. mRNA levels of SOCS3 and cFos were assayed by real-time qPCR. Results are means  $\pm$  SEM defined as a fold induction over WT treated with PBS (set as 1) and normalized to GAPDH,  $n = 5$  for each group. \* $P < 0.05$  vs. corresponding WT + PBS. **B.** STAT3 protein is increased 100-fold in mitochondrial fractions isolated from MLS-STAT3E hearts. 30  $\mu$ g of WT protein or 2  $\mu$ g for MLS-STAT3E protein were separated by SDS PAGE. A representative immunoblot of three independent samples from each group is shown.