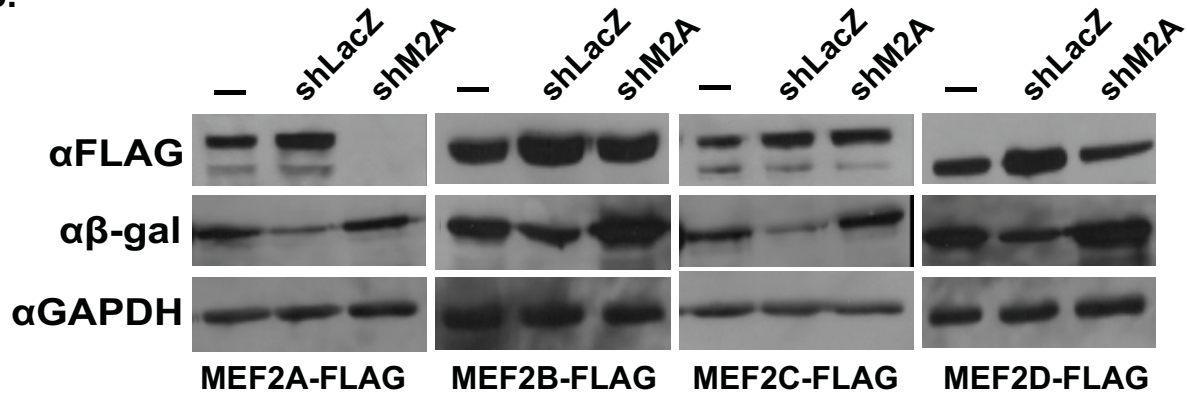


Supplemental Figure S1

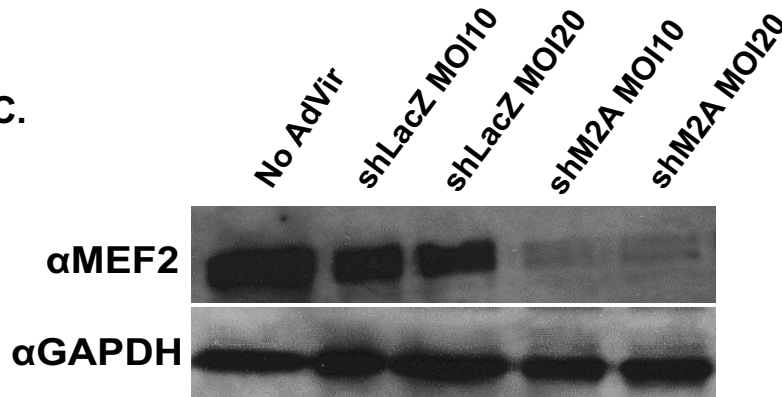
A. MEF2A shRNA Target Sequence

GGA CTA GTG TAC TCA GCA ATG
G L V Y S A M

B.



C.



Supplemental Figure S1. Characterization of MEF2A-specific shRNA. A, Nucleotide and amino acid sequence targeted by synthesized short hairpin RNA (shRNA). B, Western blot analysis demonstrating specificity of MEF2A shRNA. Epitope-tagged MEF2 proteins indicated at bottom of each blot. GAPDH was used as a loading control and LacZ shRNA was used as a negative control. C, Western blot analysis of endogenous MEF2A in NRVMs transduced with MEF2A-specific shRNA adenovirus. GAPDH was used as a loading control. MOI, multiplicity of infection.