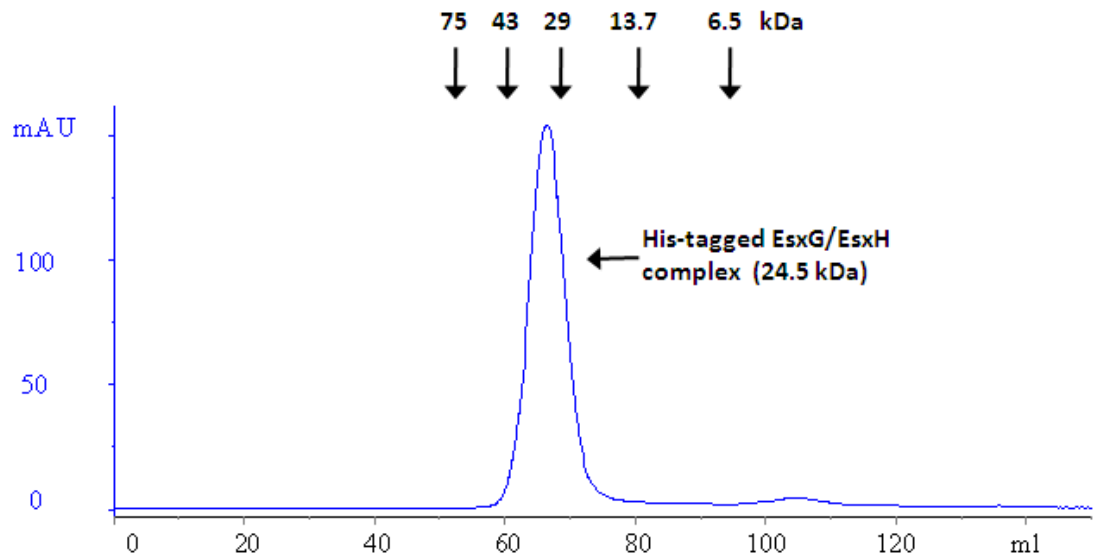


Supplementary Figure 1. Gel filtration and SDS-PAGE analysis of the EsxG•EsxH complex. A. A typical gel filtration trace for His-tagged EsxG•EsxH complex, with the elution positions of molecular weight markers indicated by arrows above the trace. At pH 6.5 the EsxG•EsxH complex elutes as a single peak but slightly earlier than expected for a complex of 24.5 kDa. This probably reflects the long, flexible N- and C- terminal arms at either end of the complex, resulting in an increase in the effective hydrodynamic volume. B. SDS-PAGE analysis of fractions eluted from the gel filtration column. Lane 1 is the column load, lanes 2-8 are fractions eluted from the column and lane 9 contains molecular weight markers (Invitrogen). The gel filtration peak is shown to contain EsxG and EsxH at a ratio of approximately 1:1.

A.



B.

