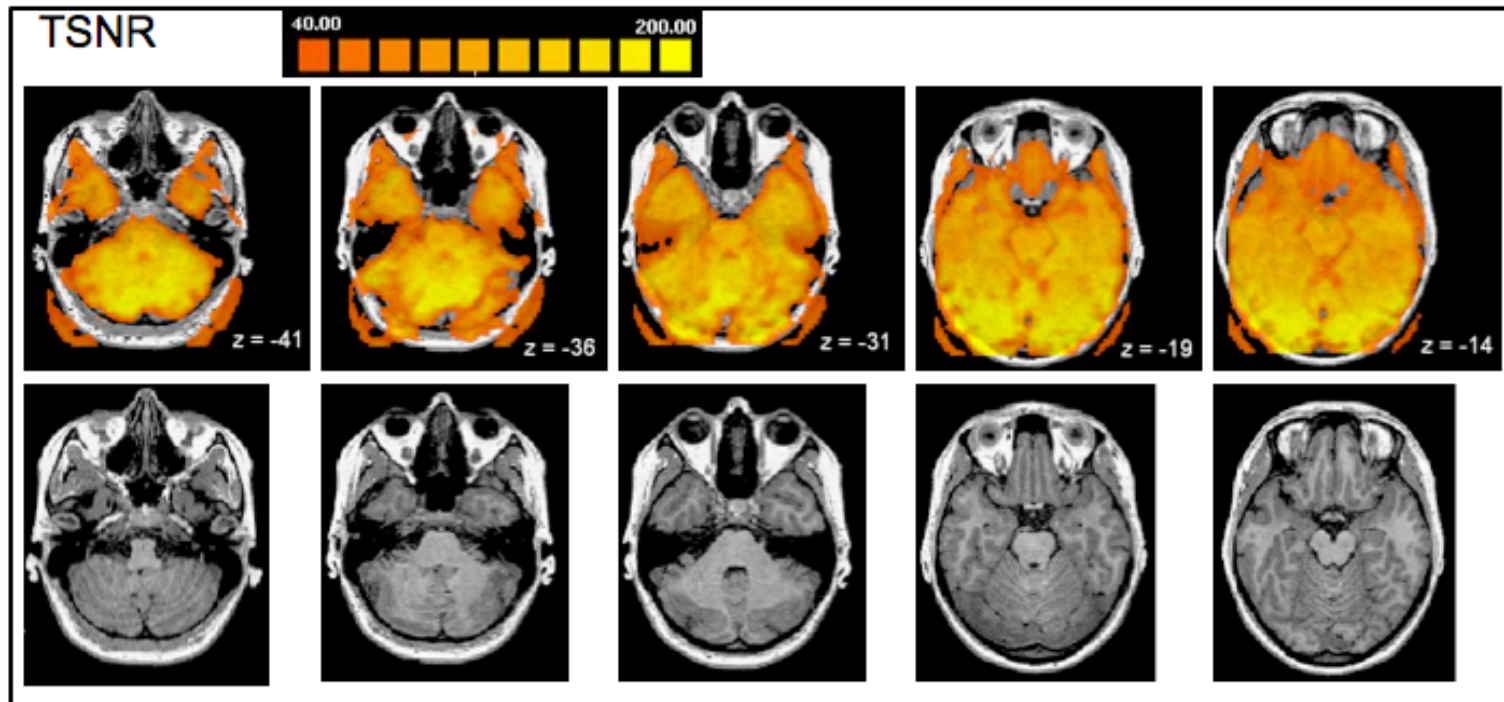


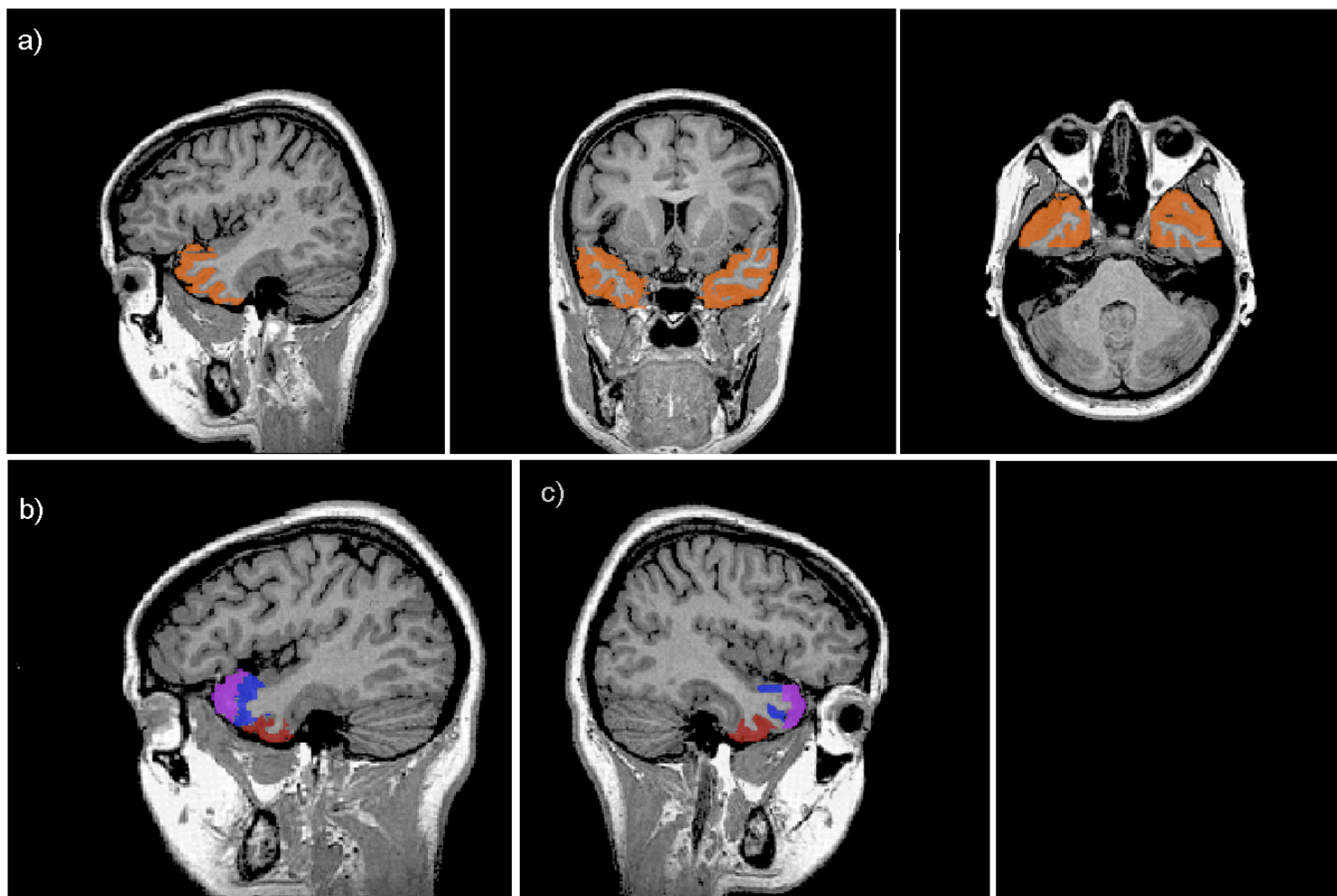
Appendix Figure 1.

TSNR map showing signal coverage for one participant in talariach space. The map is thresholded at a TSNR of 40, indicated by orange. Almost all of the anterior temporal lobe regions exceeded this threshold.



Appendix Figure 2.

ROIs selected for this study: a) ROI of entire ATL, using neurological convention where left=left; b) the three small ROIs in the left hemisphere, purple represents the polar ROI, blue represents the dorsal ROI and red represents the ventral ROI; c) the three small ROIs in the right hemisphere, same color associations.



Appendix Figure 3.

Whole brain analysis, comparing social (orange) to nonsocial stimuli (blue).

