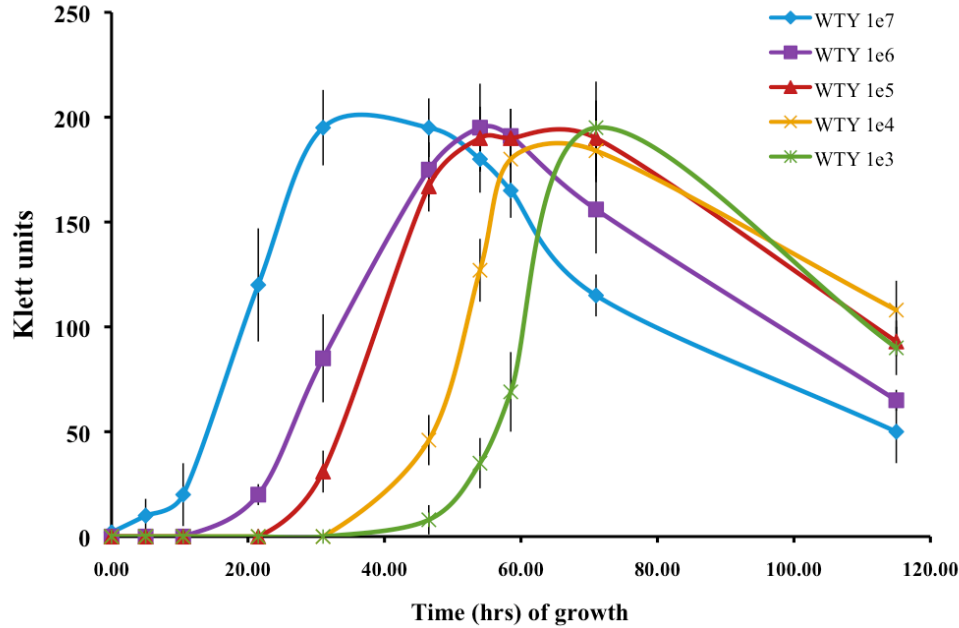


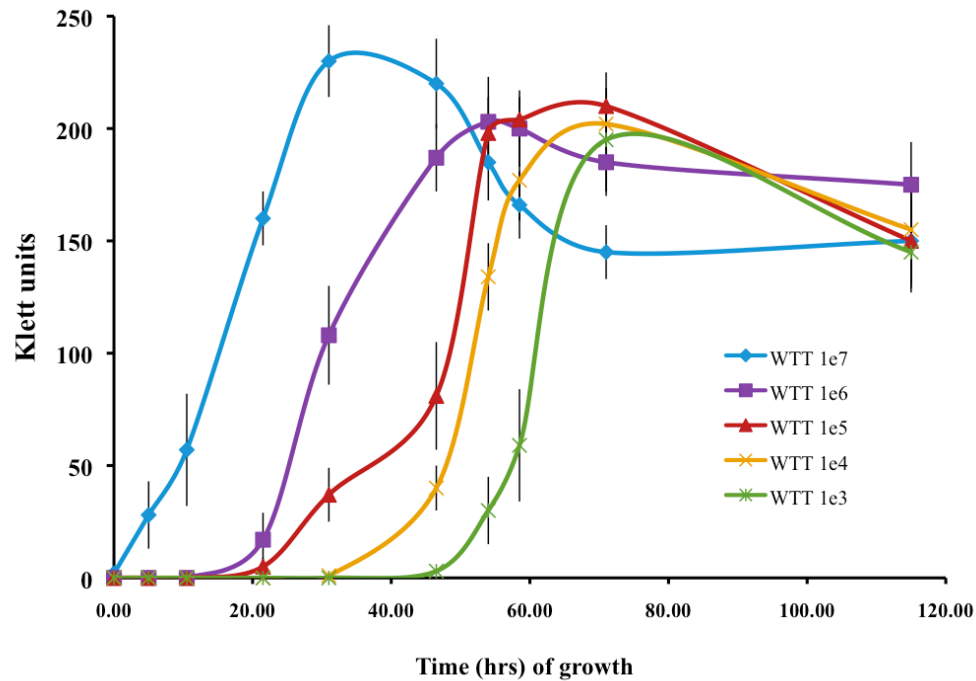
Fig. S1. The WT tan and *dkx-Swr(+)* strain formed long translucent mounds in the low cell density submerged culture assay. Spore levels for WT tan and *dkx-Swr(+)* mutant treated sonication and heat were at least 100-fold lower than the WT yellow. Photos were taken after 4 days. Bar= 5 mm; WT = DK1622; *dkxG- Swr++* = MxH2535; *dkxG- Swr(+)* = MxH2576

Fig S2. Effect of initial cell density on growth of yellow and tan variants
WTY = DK1622 (wild-type) yellow variant (upper graph) and WTT = DK1622 tan variant (lower graph). CTPM broth cultures was inoculated with 100 μ l of cells at each of the five densities shown in the legend and then incubated at 32°C with shaking for 120 hours.

Growth of yellow variant in liquid culture



Growth of tan variant in liquid culture



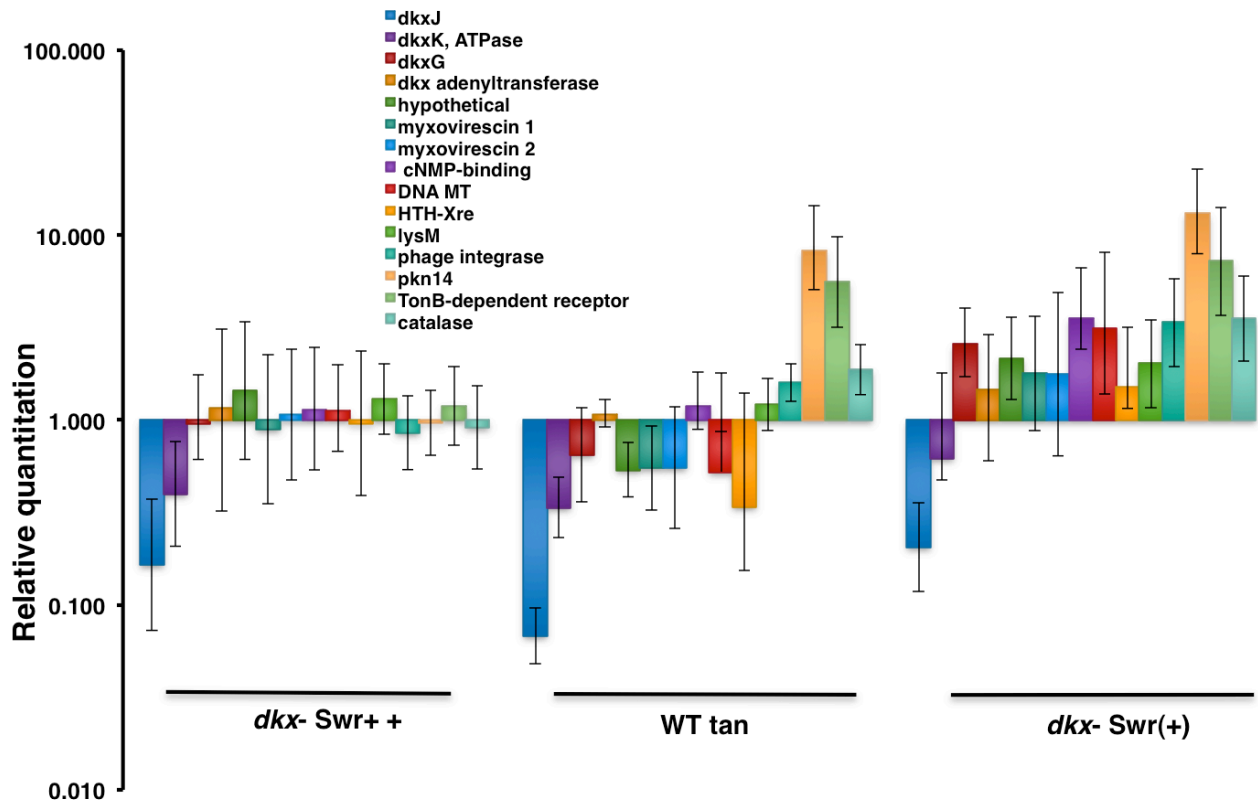


Fig S3. (Supplemental Figure for Table 2). qRT-PCR was used to compare the expression of PV-regulated genes in *dkxG*⁻ mutants that phase vary to produce Swr+++ and Swr(+) forms whose morphology resembles that of yellow and tan variants, respectively. All values were relative to the WT yellow expression (WT = 1). Expression of *dkxJ* and *dkxK* is decreased in all three tan strains due to phase variation or *dkxG* mutation. Expression of genes encoding the TonB-dependent receptor, serine-threonine kinase Pkn14 and catalase, which are indicated by the rightmost gold, green, and blue-green bars, respectively, was increased in the tan variant and the *dkxG*⁻ Swr(+) mutant only. Others are discussed in the text. *dkxG*⁻ Swr+++, WT tan, and *dkxG*⁻ Swr(+) expression levels were relative to the WT yellow (calibrator, set to 1) plotted on a log scale as decreased (< 1) or increased expression (>1). The endogenous control for qRT-PCR was 16S RNA. Legend: *dkxJ* (MXAN4295), *dkxK* (MXAN4294), *dkxG*, (MXAN4299), *dkx* adenylyltransferase (MXAN4305), hypothetical (MXAN0504), myxovirescin 1 (MXAN3943), myxovirescin 2 (MXAN3949), cNMP binding (MXAN4084), DNA MT (methyltransferase; MXAN5138), HTH-Xre (MXAN0228), *lysM* (MXAN5478), phage integrase-like (MXAN1200), *pkn14* (MXAN4371), TonB-dependent receptor (MXAN6911), and catalase (MXAN4389). Bars represent the range RQ min and RQ max for each sample.