

SUPPLEMENTAL MATERIALS

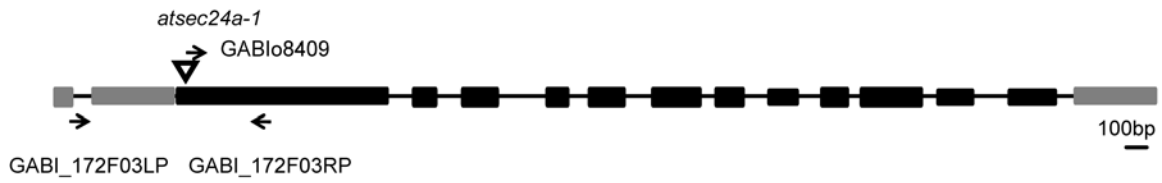
Manuscript title: Evidence for the involvement of the Arabidopsis

SEC24A in pollen germination

Authors: Renata Conger, Yani Chen, Silvia Fornaciari, Carmen Faso, Michael Held, Luciana Renna and Federica Brandizzi

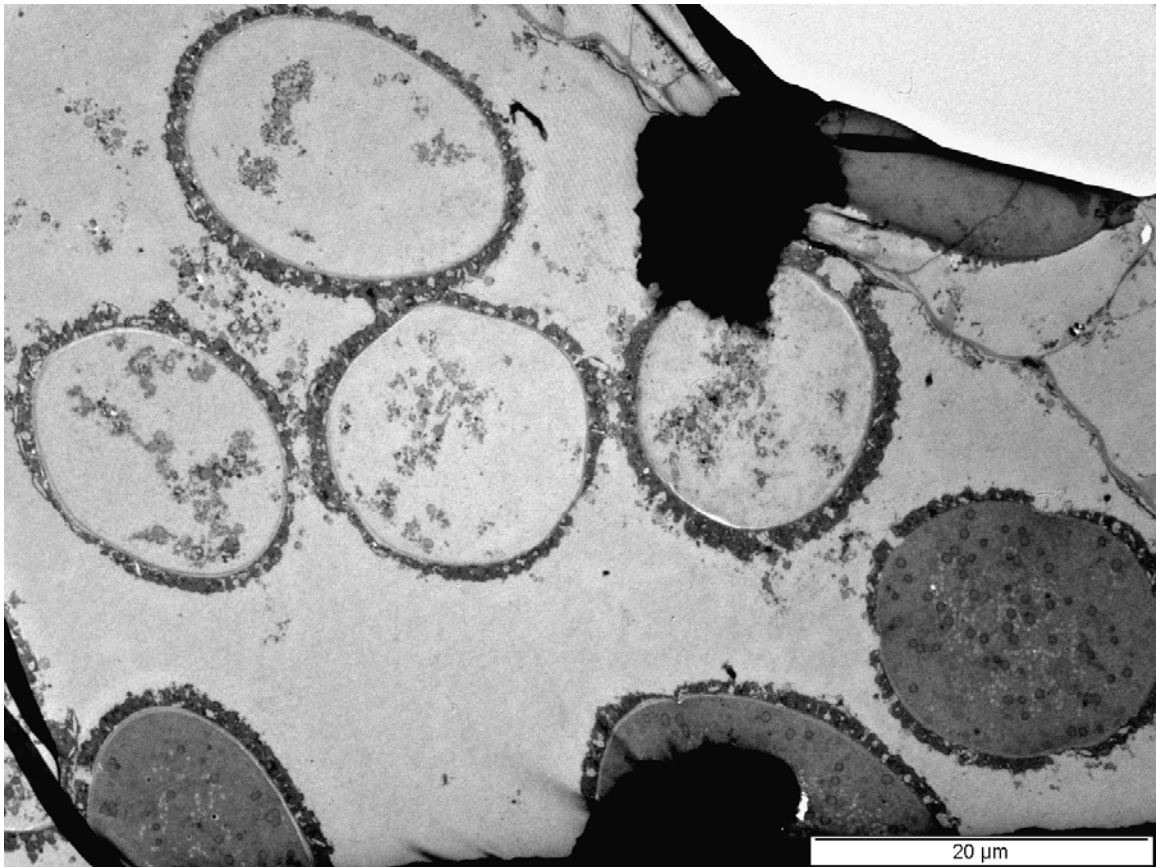
Primer	Sequence (5'-3')
GABI_172F03 RP	GACCTGCAAGAGTTTGAGGTG
GABI_172F03 LP	ACTTGGTGGTTCTCCAATTCC
GABIo8409	ATATTGACCATCATACTCATTGC

Supplemental Table 1. List of primers used in the work.



Supplemental Figure 1. Schematic of the *AtSEC24A* genomic fragment.

Exons and introns are shown as black boxes and lines, respectively. Sites of the T-DNA insertion and annealing positions of primers are also indicated in the figure.



Supplemental Figure 2. The appearance of the pollen of *atsec24a-1(+/-)* is not homogeneous at an ultrastructural level.

Transmission electron micrograph of pollen grains from *atsec24a-1(+/-)* anthers showing that although the shape and the size of the pollen grains is uniform, the appearance of the content of the grains varies with half of the grains being more electron translucent than the others. Scale bar = 20 μm.