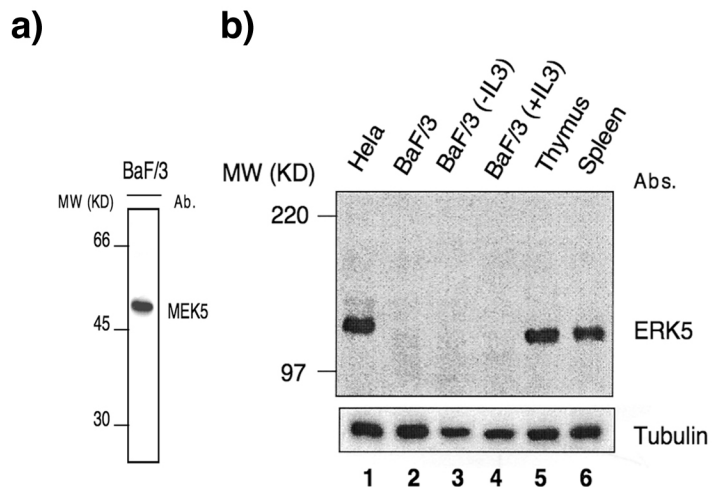
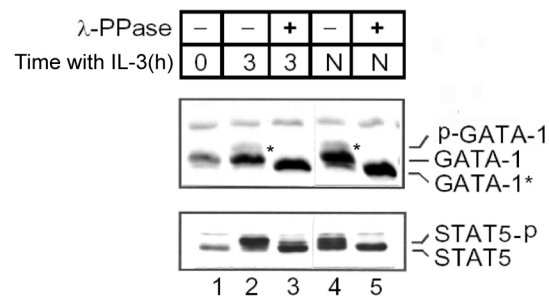


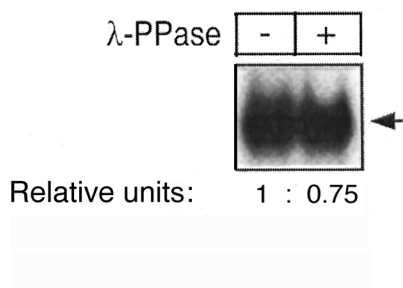
**sFig. 1**



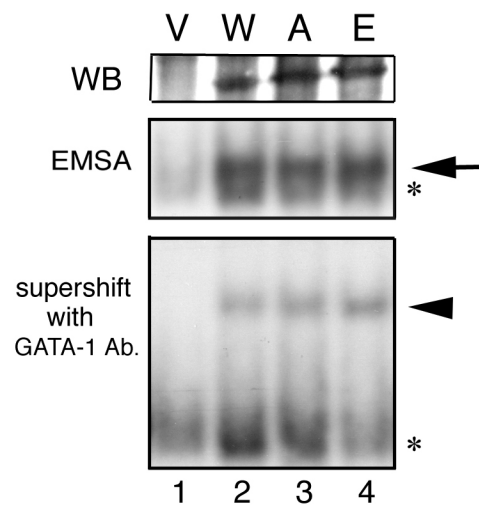
**sFig. 2**



**sFig. 3**



**sFig. 4**



**sTable 1**

ANTIBODY	COATED ANTIGEN	ANTIBODY TITER *
Anti-P-GATA-1	GATA-1 (p-peptide)	> 5,000,000
	GATA-1 (control peptide)	< 200

\* Antibody titer means the dilution fold of antibody solutions that produced an OD of 1.0 in the ELISA assay.