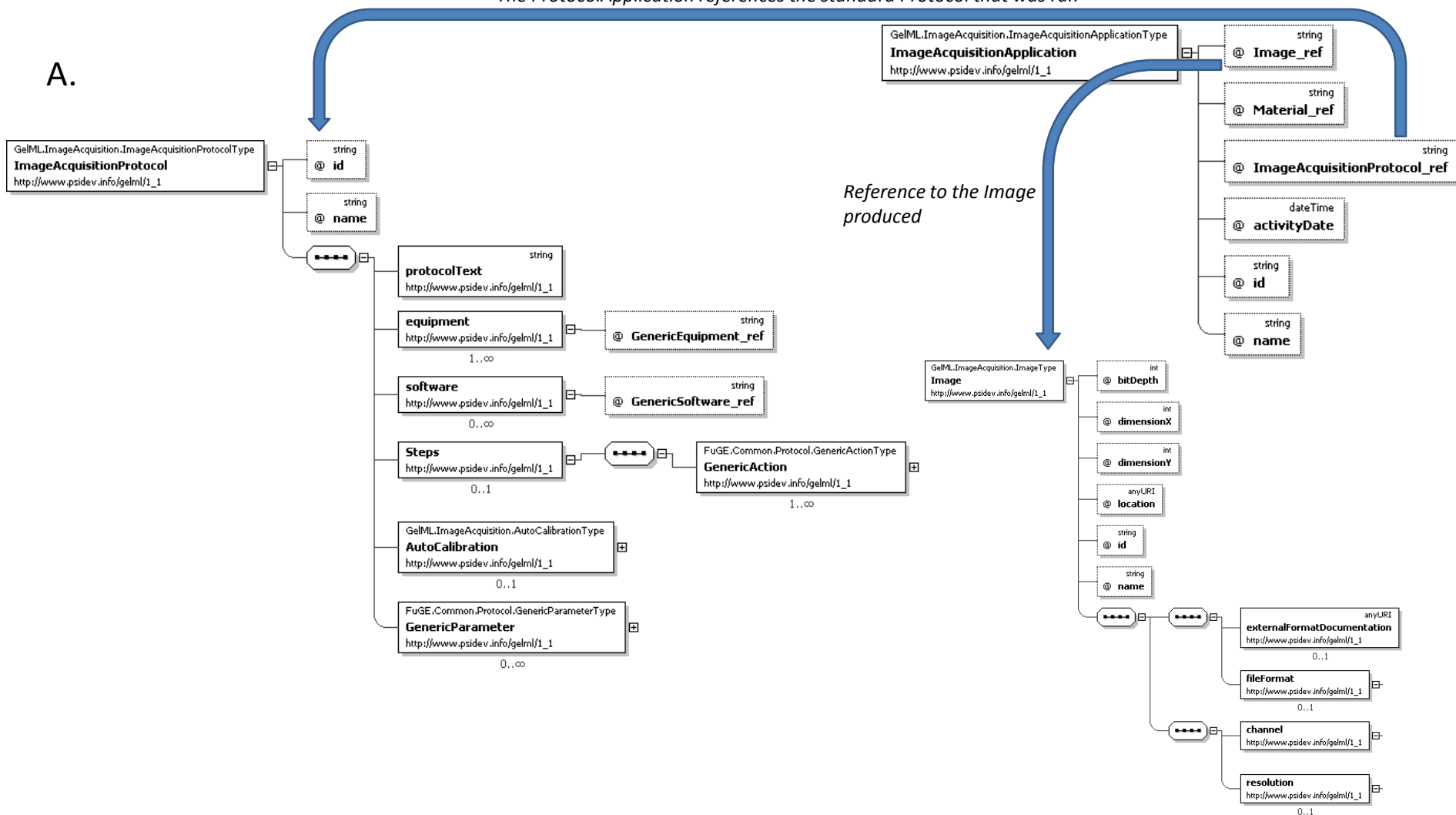


The ProtocolApplication references the standard Protocol that was run

A.



B.

The ProtocolApplication references the standard Protocol that was run

```
<ImageAcquisitionProtocol id="ImagingProtocol1">
```

```
<protocolText>Gel is placed directly onto plate, plastic backing side up,
and scanned in transmissive mode using the transparency adapter
</protocolText>
<equipment GenericEquipment_ref="PowerLook_1120"/>
<software GenericSoftware_ref="MagicScan"/>
<AutoCalibration id="AC1">
  <BooleanValue value="true"/>
</AutoCalibration>
```

```
</ImageAcquisitionProtocol>
```

```
<ImageAcquisitionApplication
id="ImageAcquisitionApplication1" Material_ref="Gel2D_1"
Image_ref="Image1" ImageAcquisitionProtocol_ref="ImagingProtocol1"/>
```

Reference to the Image produced

```
<Image bitDepth="8" dimensionX="819" dimensionY="612" id="1430"
location="http://estrellapolar.cnb.csic.es/proteored/MIAPE/Ficheros/355/Gel1600PMT.jpg">
<fileFormat>
  <cvParam accession="sep:00050" cvRef="SEP" name="Joint Photographic Experts Group"/>
</fileFormat>
<resolution>
  <AtomicValue>
    <PropertyValue unitAccession="UO:0000243" unitCvRef="UO"
unitName="pixels per millimeter" value="7.5"/>
  </AtomicValue>
</resolution>
</Image>
```